

CERTIFICATE OF LOCATION OF GOVERNMENT CORNER

County of Anoka

State of Minnesota

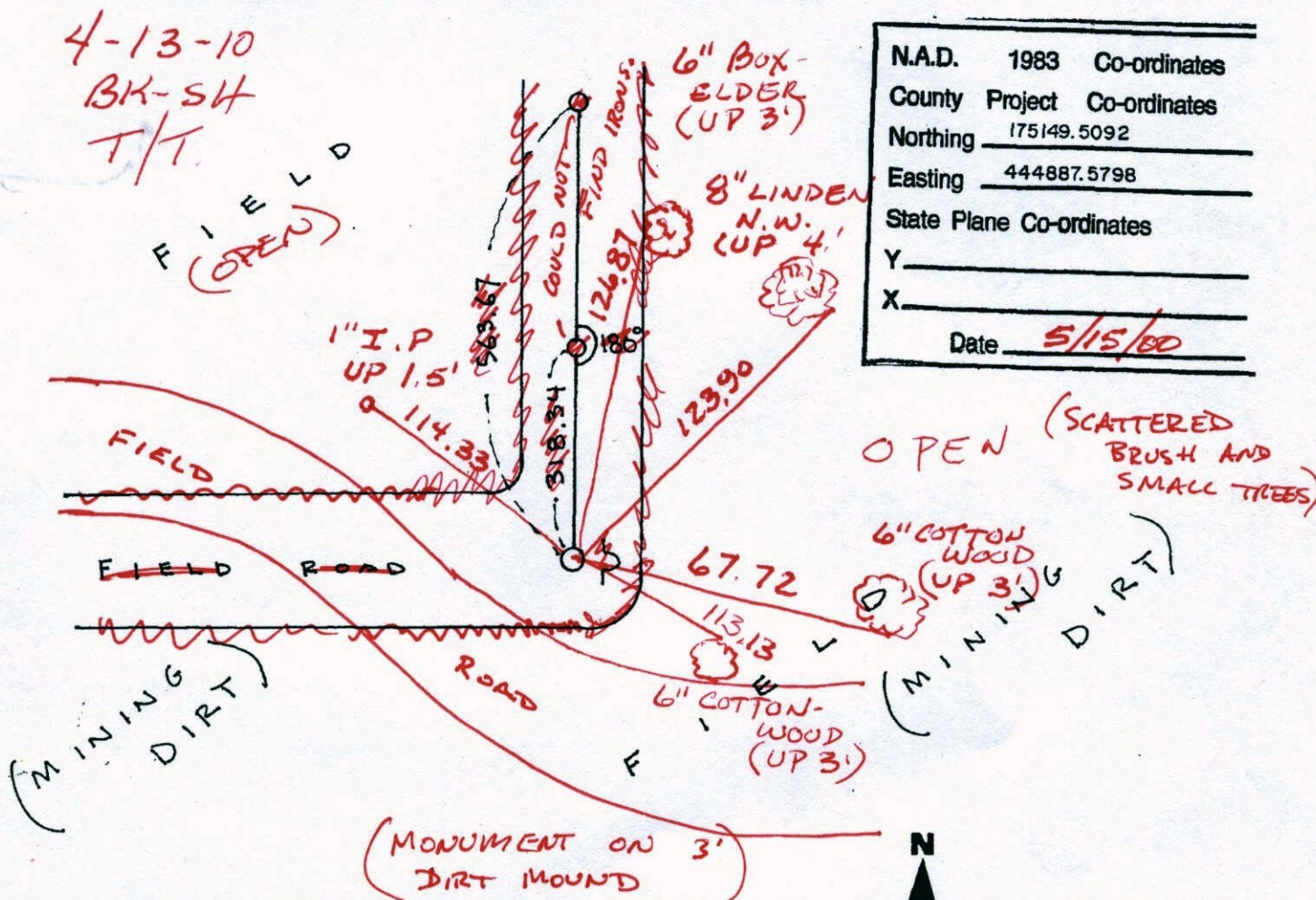
SOUTH 1/4 Corner of Sec. 20 Township 32 Range 25

I hereby certify that on the 19TH day of JUNE, 1964, I found the described corner which was evidenced by CONCRETE MONUMENT

and I further certify that to perpetuate the location of said corner, I did, at the exact location thereof, place a permanent marker consisting of CAST IRON MONUMENT (DOWN 0.8)

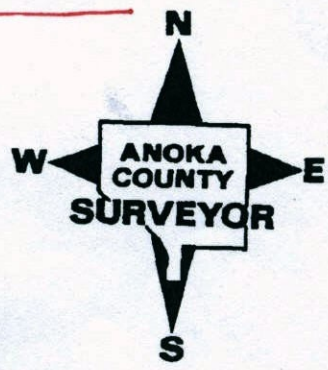
~~SIGN & POST ON EAST SIDE~~ SIGN & POST ON NORTH SIDE

which reference or witness monuments are located in the manner following:



N.A.D.	1983	Co-ordinates
County	Project	Co-ordinates
Northing	175149.5092	
Easting	444887.5798	
State Plane Co-ordinates		
Y	_____	
X	_____	
Date	5/15/00	

Revised date	Revised date	Revised date
8 13 82		
7 28 85		
6 27 88		
4 26 93		
8 9 93		
5 15 00		



CERTIFICATE OF LOCATION OF GOVERNMENT CORNER

County of Anoka

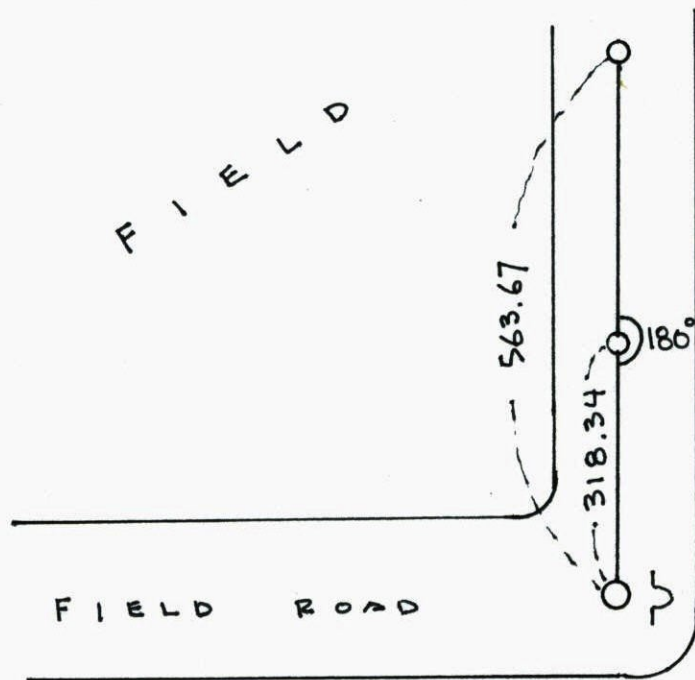
State of Minnesota

SOUTH 1/4 Corner of Sec. 20 Township 32 Range 25

I hereby certify that on the 19TH day of JUNE, 1964, I found the described corner which was evidenced by CONCRETE MONUMENT

and I further certify that to perpetuate the location of said corner, I did, at the exact location thereof, place a permanent marker consisting of CAST IRON MONUMENT
SIGN & POST ON EAST SIDE

which reference or witness monuments are located in the manner following:

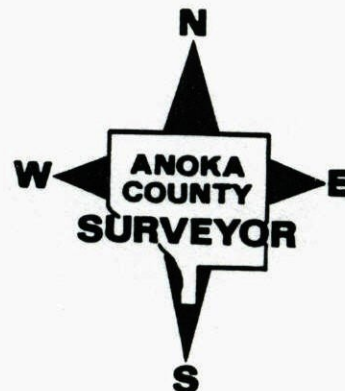


N.A.D.	1983	Co-ordinates
County	Project	Co-ordinates
Northing	<u>175149.5092</u>	
Easting	<u>444887.5798</u>	
State Plane Co-ordinates		
Y	_____	
X	_____	
Date	_____	

(MINING DIRT)

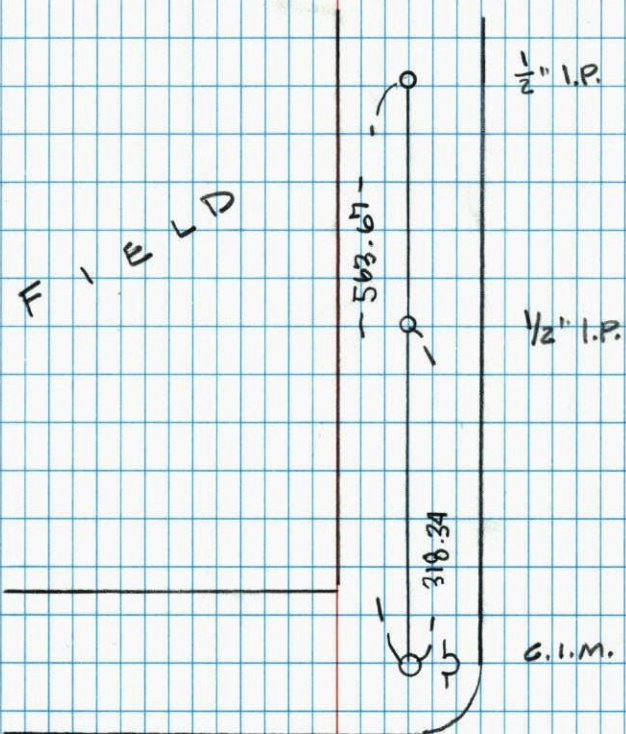
FIELD (MINING DIRT)

Revised date	Revised date	Revised date
8 13 82		
7 28 85		
6 27 88		
4 26 93		
8 9 93		
5 15 00		



SOUTH 1/4 COR. SEC. 20 T 32 R 25

GPS & TRANSIT TIE ON CAST IRON
MONUMENT WITH SIGN & POST E. SIDE
(MINING DIRT THROUGHOUT)



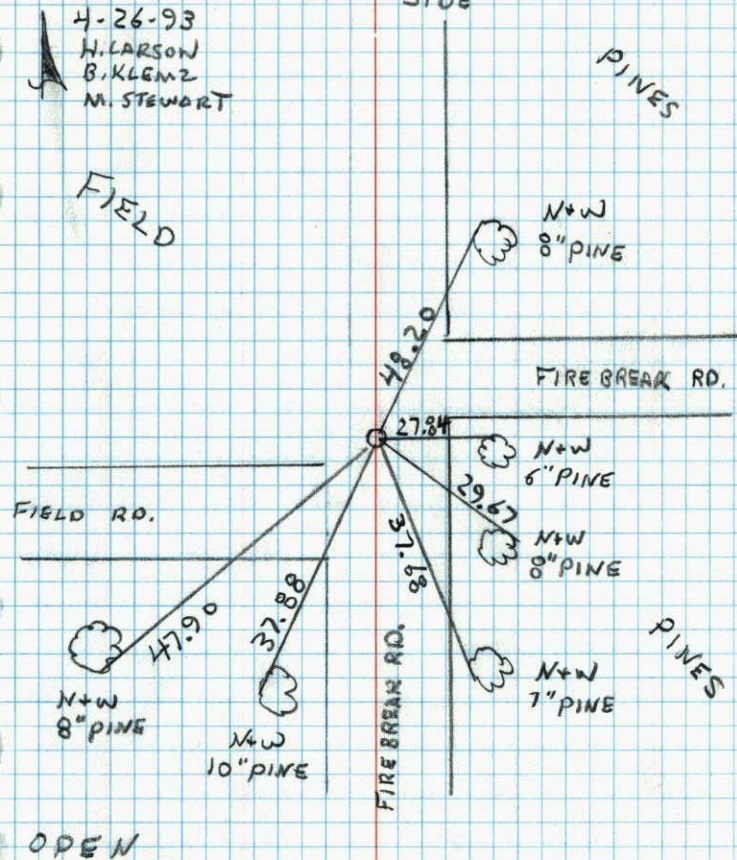
5/15/00
J. SIMMER
T. SCHWAB
B. KLEMMZ

S 1/4 CORNER SECTION 20 T 32 R 25

RETIED CAST IRON AFTER FIRE
DESTROYED TREES

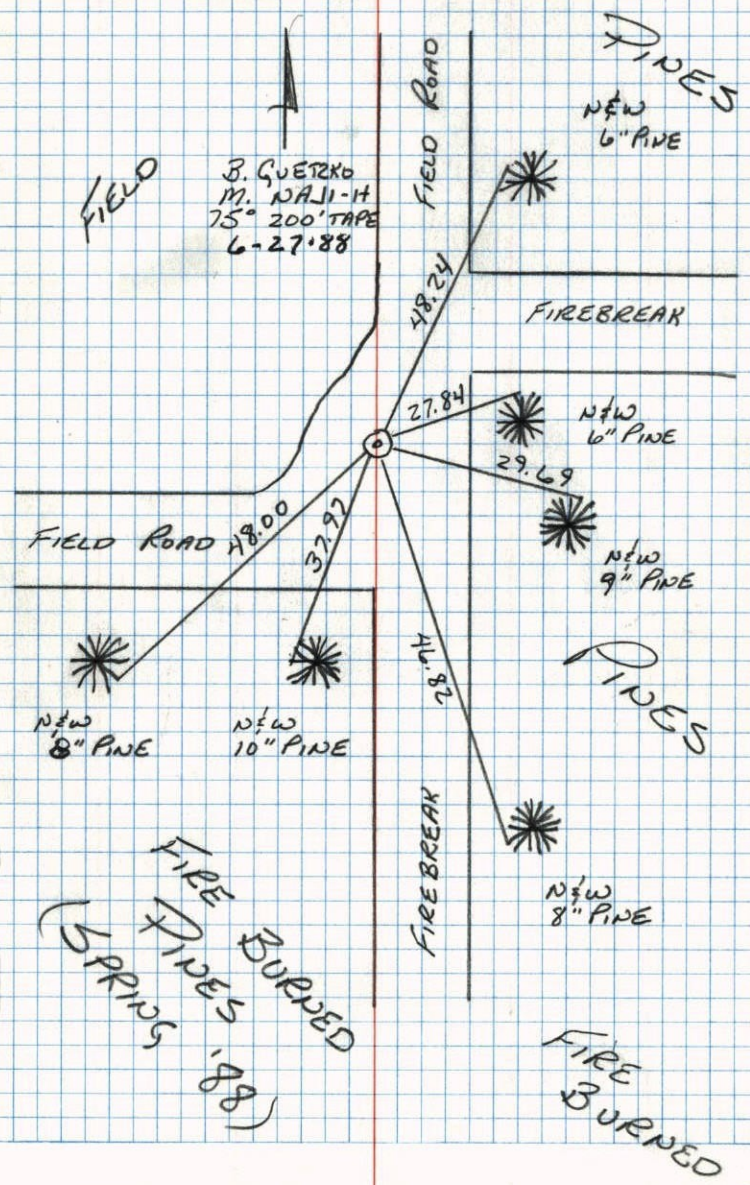
G.I. DOWN 1' SIGN & POST ON SOUTH
SIDE

4-26-93
H. CARSON
B. KLEMMZ
M. STEWART



S 1/4 Cor Sec 20 T32 R25

RETIED CAST IRON MONUMENT



B. GUETZKO
M. NAJJI-H
75' 200' TAPE
6-27-88

NW 8\"/>

FIRE BURPED
PINES
(SPRING '88)

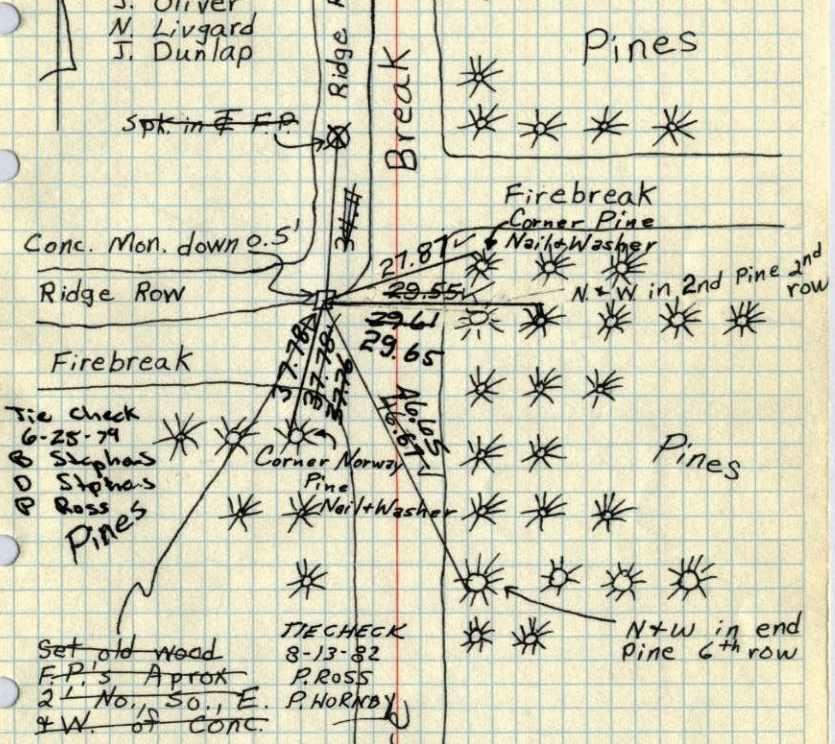
FIRE BURPED

NO. 448 TELEPHONE

S 1/4 Cor. Sec. 20, T32, R 25

Found 4" Sq. Conc. Mon. down 0.5' with top broken off. Straightened up and tied. Set Cast Iron Mon down 0.5', 3/4" Iron Pipe on East side. Sign Post on South side.

N 19 June 64
J. Oliver
N. Livgard
J. Dunlap



Tie check
6-25-74
B. Stephens
S. Ross
Pines

Set old wood
F.P.'s Approx
2' No. 15 So., E.
NW. of CONC.

Tie Check
June 20, 1969
D. Powell
R. Olson 7-7-76
B. Olson
Tie Check July 18, 1972
B. Olson
J. Boettcher
D. Brien

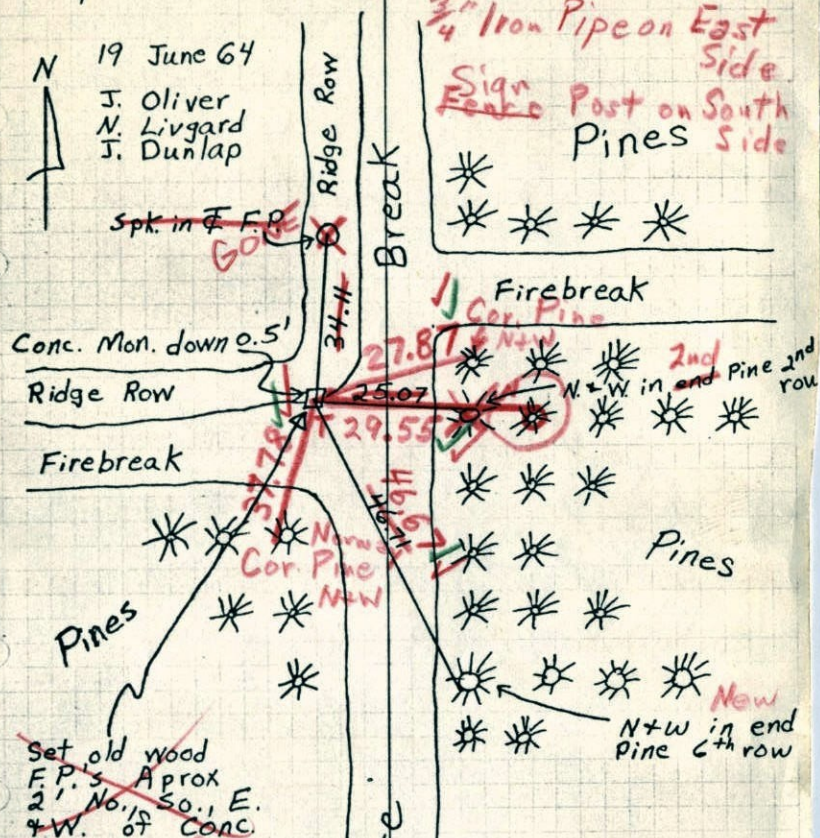
TEMPERATURE CORRECTED
AND HORIZONTALLY
TAPED MEASUREMENTS

ROLAND W. ANDERSON
COUNTY SURVEYOR
ANOKA COUNTY, MINNESOTA

S 1/4 Cor. Sec. 20, T32, R 25

Found 4" Sq. Conc. Mon. down 0.5' with top broken off. Straightened up and tied.

N 19 June 64
J. Oliver
N. Livgard
J. Dunlap



Set old wood
F.P.'s Approx
2' No., So., E.
+ W. of Conc.

6/20/69
#6-60°
D. Powell
R. Olson
B. Olson

TEMPERATURE CORRECTED
AND HORIZONTALLY
TAPED MEASUREMENTS

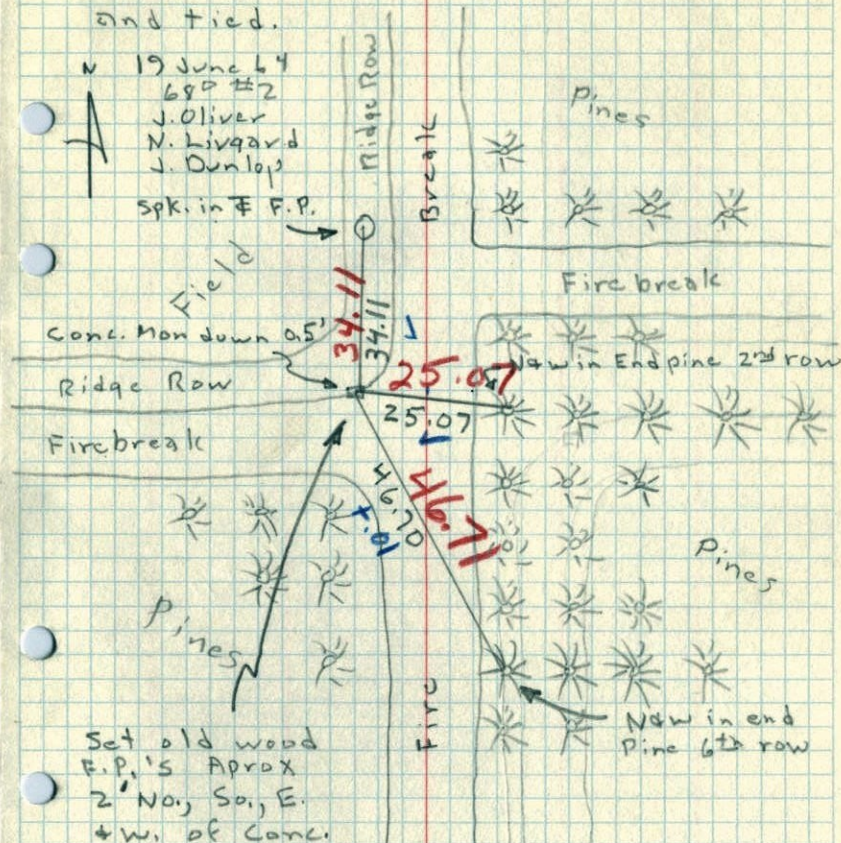
ROLAND W. ANDERSON
COUNTY SURVEYOR
ANOKA COUNTY, MINNESOTA

S 1/4 Cor. Sec. 20, T32, R25

Found 4" Sq. Conc. Mon down 0.5'

with top broken off. Straightened up and tied.

N 19 June 64
680 #2
J. Oliver
N. Livgard
J. Dunlap



Set old wood
F.P.'s Approx
2' No., So., E.
+ W. of Conc.

NW in end
Pine 6th row