

# CERTIFICATE OF LOCATION OF GOVERNMENT CORNER

County of Anoka

State of Minnesota

WEST 1/4 Corner of Sec. 29 Township 32 Range 25

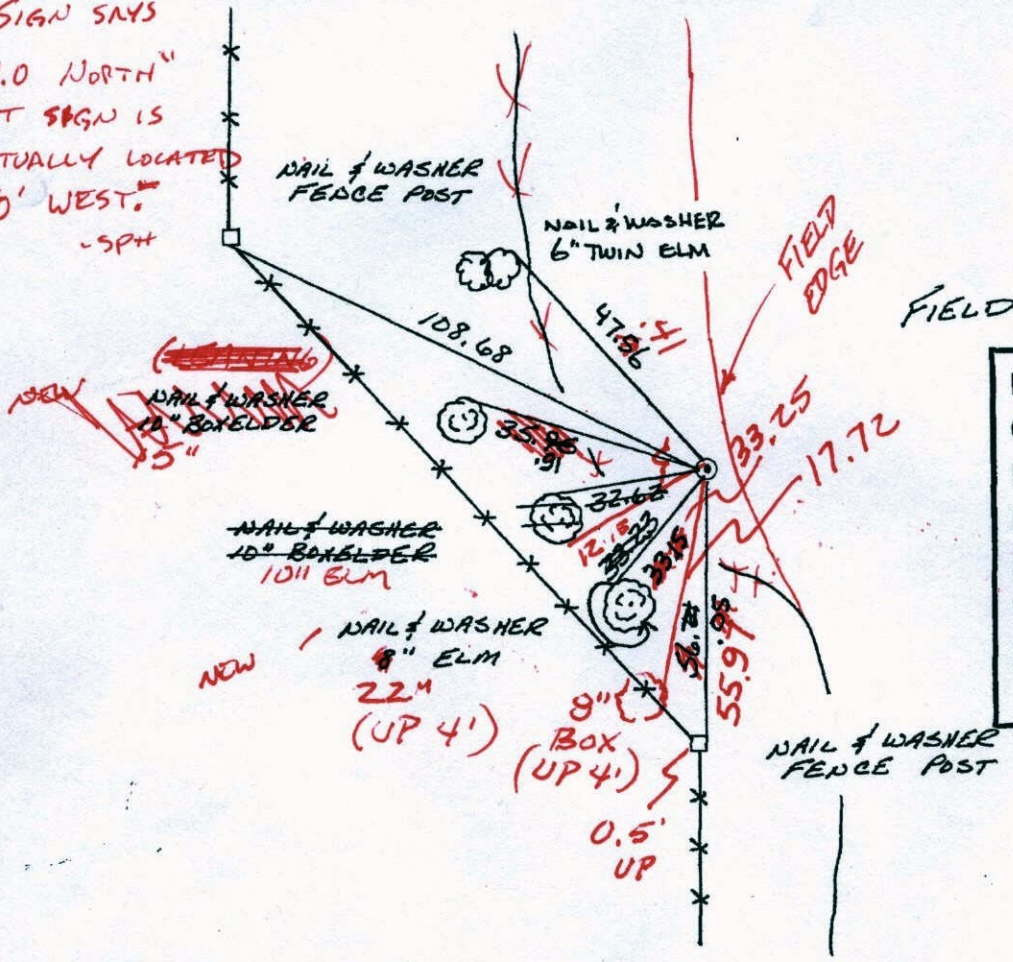
I hereby certify that on the 5 day of AUGUST, 1975, I found the described corner which was evidenced by CONCRETE MONUMENT

and I further certify that to perpetuate the location of said corner, I did, at the exact location thereof, place a permanent marker consisting of CAST IRON MONUMENT  
(SIGN 4' SOUTH) (DOWN 1.5')

which reference or witness monuments are located in the manner following:

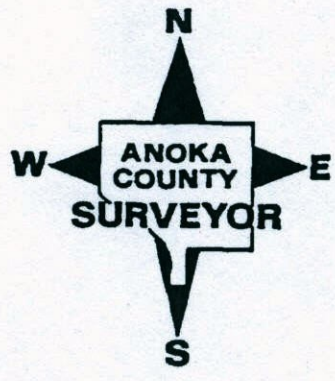
SIGN SAYS  
"4.0 NORTH"  
BUT SIGN IS  
ACTUALLY LOCATED  
4.0' WEST.  
-SPH

BK - SH  
4-22-10  
TAPED



N.A.D.	1983	Co-ordinates
County	Project	Co-ordinates
Northing		<u>172493.3255</u>
Easting		<u>442217.1358</u>
State Plane Co-ordinates		
Y		_____
X		_____
Date		<u>5/15/00</u>

Revised date	Revised date	Revised date
7-7-76		
6-22-79		
8-13-82		
7-25-85		
6-27-88		
8-13-93		
5-15-00		



# CERTIFICATE OF LOCATION OF GOVERNMENT CORNER

County of Anoka

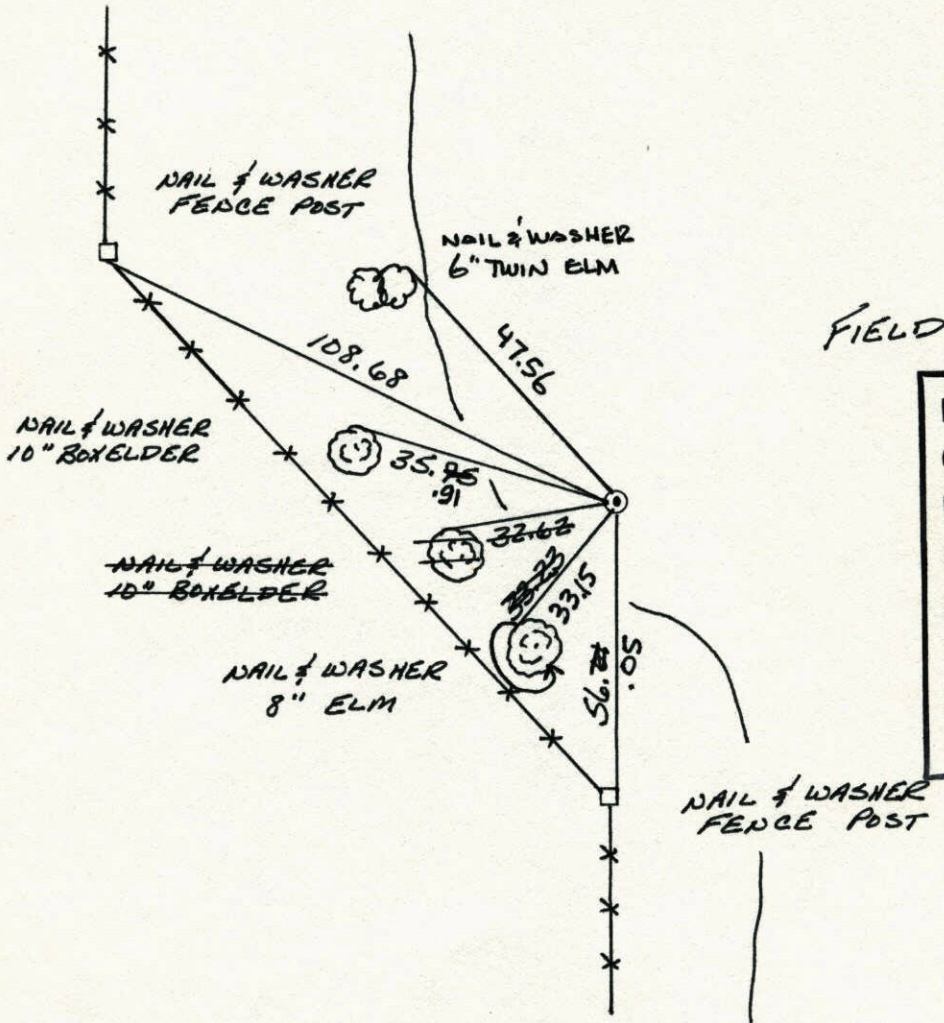
State of Minnesota

WEST 1/4 Corner of Sec. 29 Township 32 Range 25

I hereby certify that on the 5 day of AUGUST, 1975, I found the described corner which was evidenced by CONCRETE MONUMENT

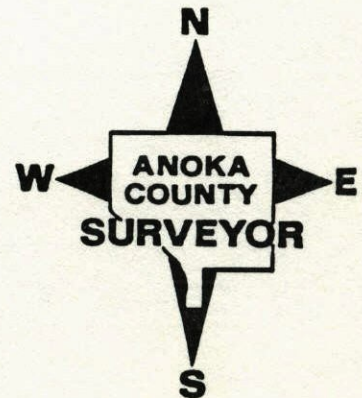
and I further certify that to perpetuate the location of said corner, I did, at the exact location thereof, place a permanent marker consisting of CAST IRON MONUMENT

which reference or witness monuments are located in the manner following:



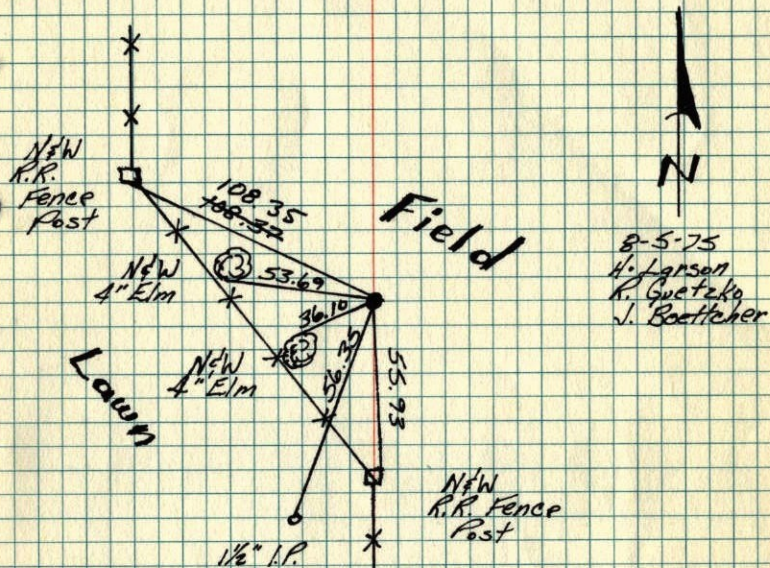
N.A.D.	1983	Co-ordinates
County	Project	Co-ordinates
Northing		<u>172493.3255</u>
Easting		<u>442217.1358</u>
State Plane Co-ordinates		
Y		_____
X		_____
Date _____		

Revised date	Revised date	Revised date
7-7-76		
6-22-79		
8-13-82		
7-25-85		
6-27-88		
8-13-93		
5-15-00		



W 1/4 Cor. Sec. 29 - T32 - R25

Set Cast Iron Monument In Place Of Broken Concrete. Cast Iron Is Down 1.5'±



8-5-75  
H. Larson  
R. Guetzko  
J. Boettcher

TIE CHECK  
7-7-76  
G. Hornby  
B. SANNERUD  
S. BRIEN

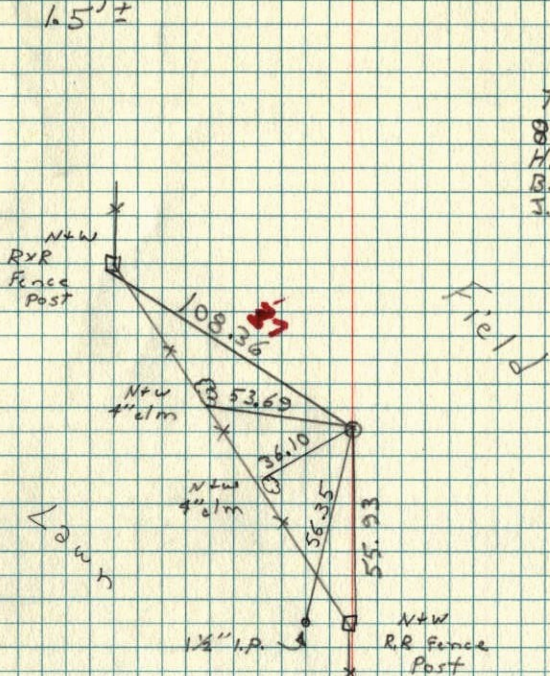
TIE CHECK  
8-13-82  
P. ROSS  
P. HORNBY

Tie Check  
6-22-79  
B. Stephens  
P. Stephens  
P. Ross

TEMPERATURE CORRECTED AND HORIZONTALLY TAPED MEASUREMENT 5 ROLAND W. ANDERSON COUNTY SURVEYOR ANOKA COUNTY, MINNESOTA

W 1/4 Cor. Sec. 29 T32 R25

Set cast iron monument in place of broken concrete. c.I. is down 1.5'±



78° ± 11  
8-5-75  
H. Larson  
B. Guetzko  
J. Boettcher

Lawn

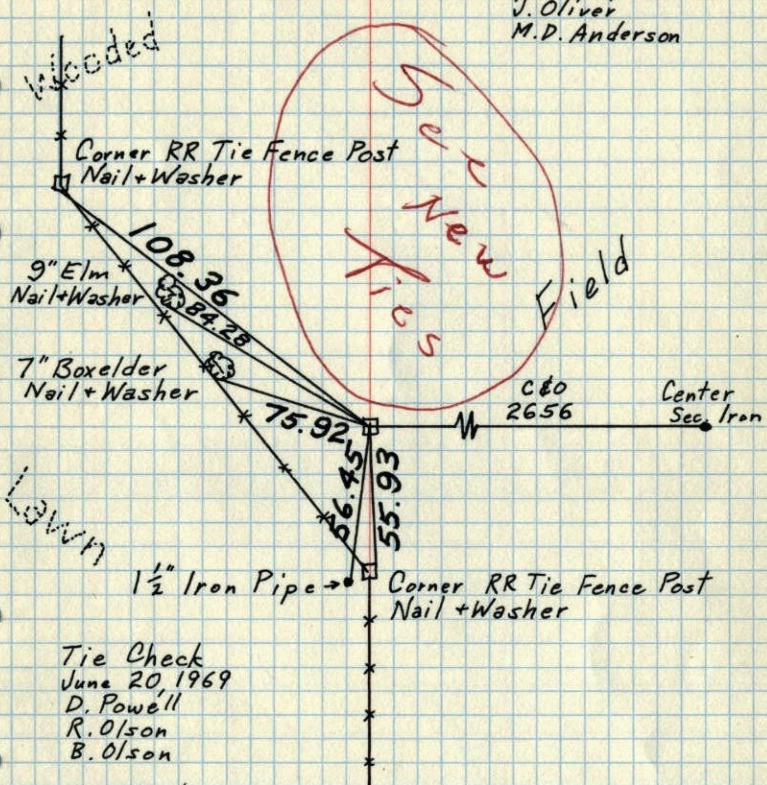
N.W. R.R. Fence Post

W 1/4 Cor. Sec. 29-T32-R25

Found 4" Square Concrete Monument down 0.5'±

Set 3/4" Iron Pipe on North side.

April 19, 1962  
J. Oliver  
M.D. Anderson



Tie Check  
June 20, 1969  
D. Powell  
R. Olson  
B. Olson

Tie Check  
8/17/72  
B. Olson  
J. Boetcher  
R. Bauer

TEMPERATURE CORRECTED  
AND HORIZONTALLY  
TAPED MEASUREMENTS

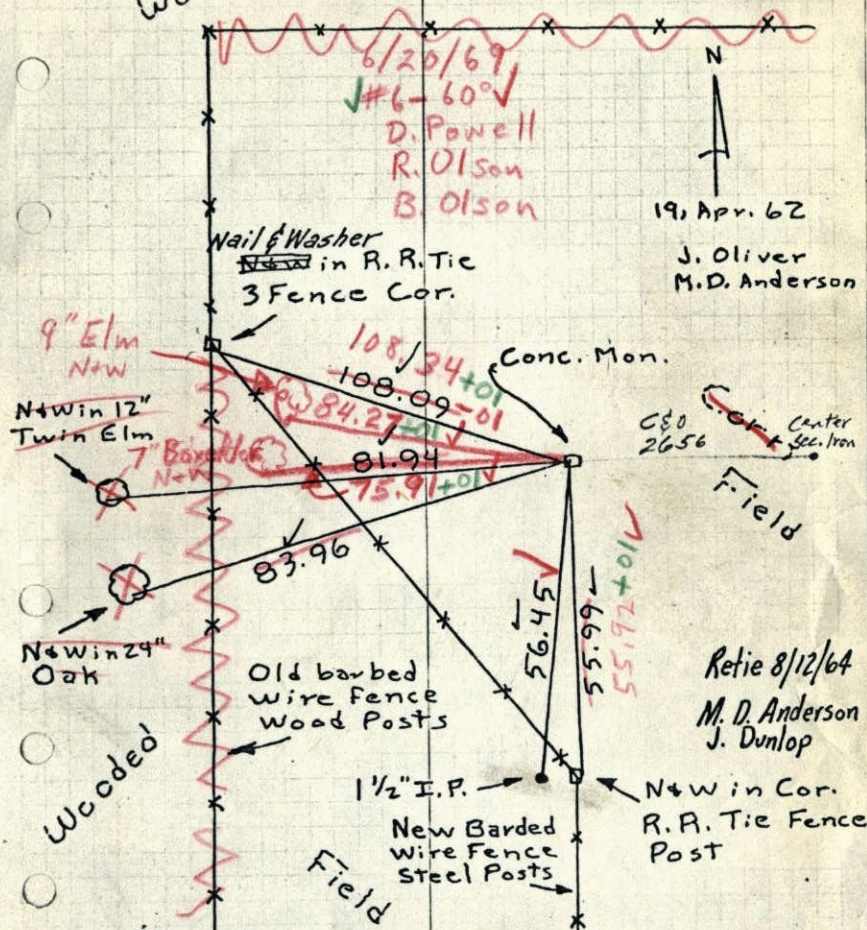
ROLAND W. ANDERSON  
COUNTY SURVEYOR  
ANOKA COUNTY, MINNESOTA

W 1/4 Cor. Sec. 29, T32, R25

Found 4" Square Conc. Mon. down 0.5'

Set 3/4" I.P. on No. Side

Wooded



6/20/69  
#6-60°  
D. Powell  
R. Olson  
B. Olson

191 Apr. 62  
J. Oliver  
M.D. Anderson

Retie 8/12/64  
M.D. Anderson  
J. Dunlop

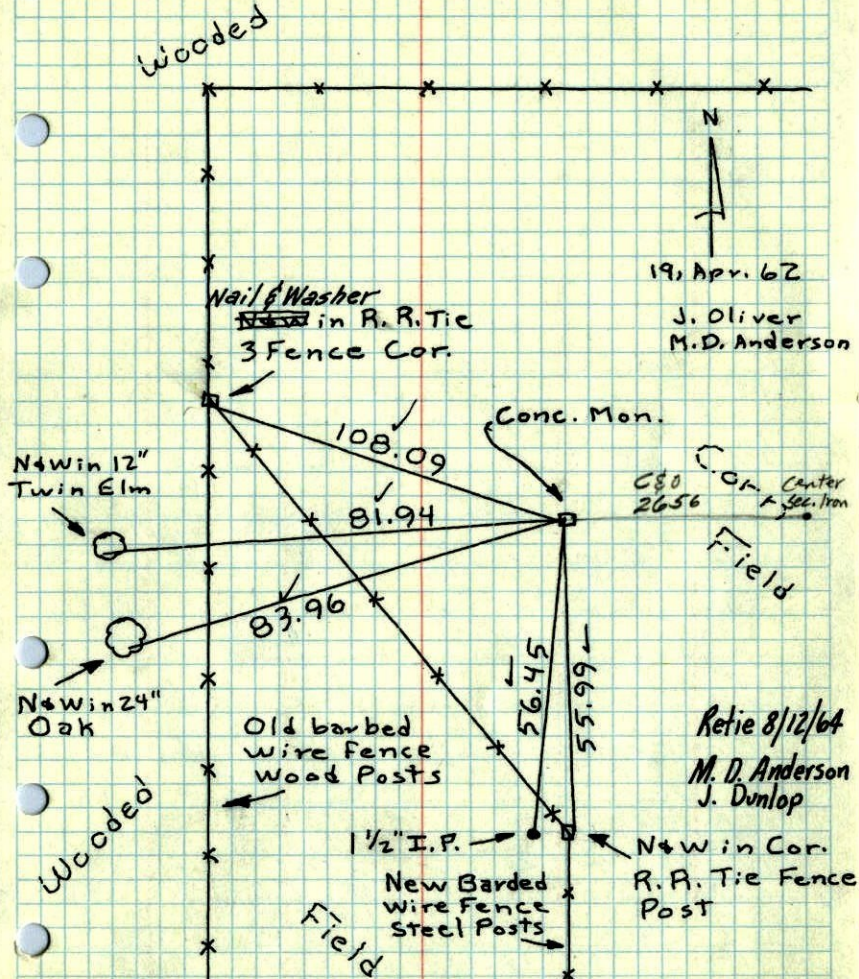
TEMPERATURE CORRECTED  
AND HORIZONTALLY  
TAPED MEASUREMENTS

ROLAND W. ANDERSON  
COUNTY SURVEYOR  
ANOKA COUNTY, MINNESOTA

W 1/4 Cor. Sec. 29, T32, R25

Found 4" Square Conc. Mon. down 0.5'

Set 3/4" I.P. on No. Side



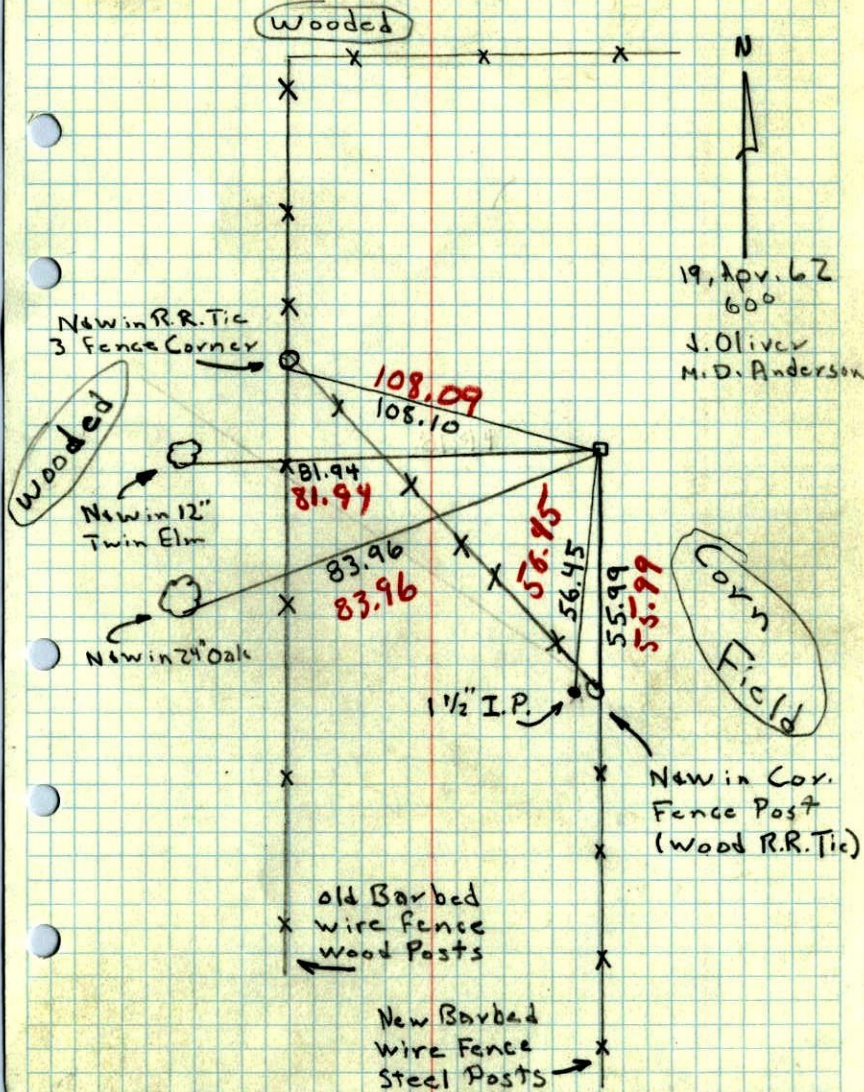
TEMPERATURE CORRECTED AND HORIZONTALLY TAPED MEASUREMENTS

ROLAND W. ANDERSON  
COUNTY SURVEYOR  
ANOKA COUNTY, MINNESOTA

W 1/4 Sec. 29, T32, R25

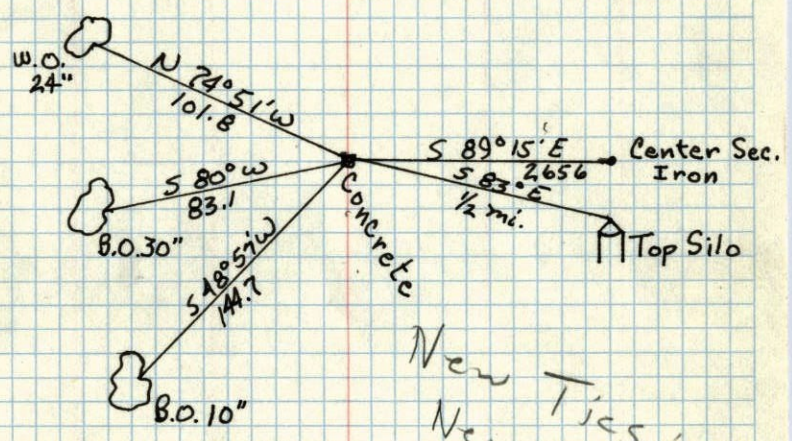
Found 4" Sq. Conc. Mon down 0.5'

Set 3/4" I.P. on No. Side.



45 ✓

W 1/4 CORNER OF SEC. 29, T 32, R 25  
CONC. DOWN 1.0



New Ties in  
New Tie Book

Sept. 14, 1943  
CARTWRIGHT