

# CERTIFICATE OF LOCATION OF GOVERNMENT CORNER

County of Anoka

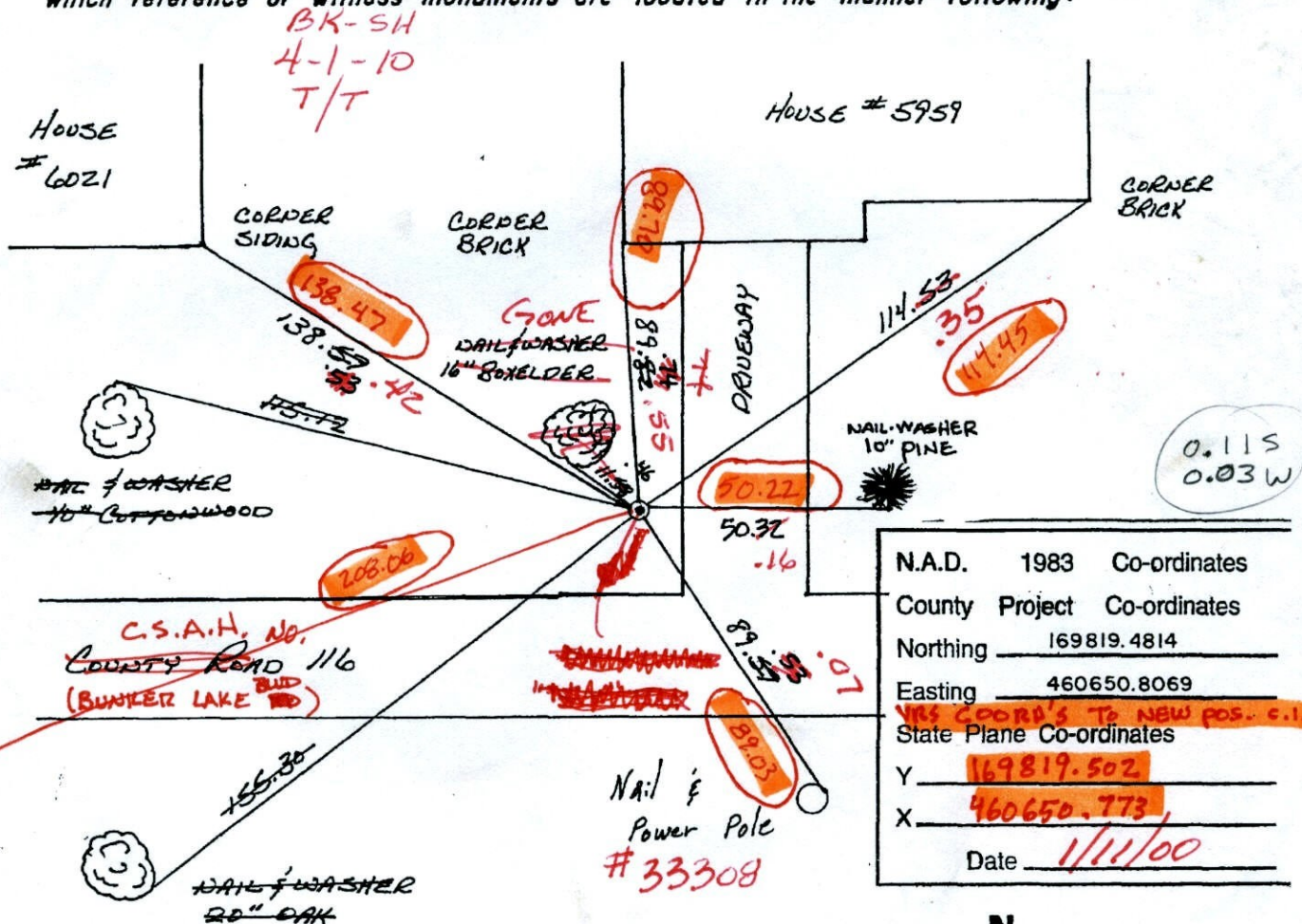
State of Minnesota

NORTH 1/4 Corner of Sec. 35 Township 32 Range 25

I hereby certify that on the 2 day of OCTOBER, 1964, I found the described corner which was evidenced by CONCRETE MONUMENT (BELOW C.I.M.)

and I further certify that to perpetuate the location of said corner, I did, at the exact location thereof, place a permanent marker consisting of CAST IRON MONUMENT (TOP BROKEN OFF) (NO SIGN)

which reference or witness monuments are located in the manner following:



N.A.D.	1983	Co-ordinates
County	Project	Co-ordinates
Northing		169819.4814
Easting		460650.8069
State Plane Co-ordinates		
Y	169819.502	
X	460650.773	
Date	1/11/00	

Revised date	Revised date	Revised date
8-17-82		
7-24-85		
6-30-88		
8-4-93		
1-11-00		

**ANOKA COUNTY SURVEYOR**

Distances circled are to correct pos.  
 1-25-11 J.S. S.H.  
 RESET SOLID C.I.M.  
 (REMOVED BROKEN C.I. SAND FOUND ORIGINAL CONCRETE BENEATH IN PERFECT POSITION AND CHECKED TO STATIC POSITION PERFECTLY.)

# CERTIFICATE OF LOCATION OF GOVERNMENT CORNER

County of Anoka

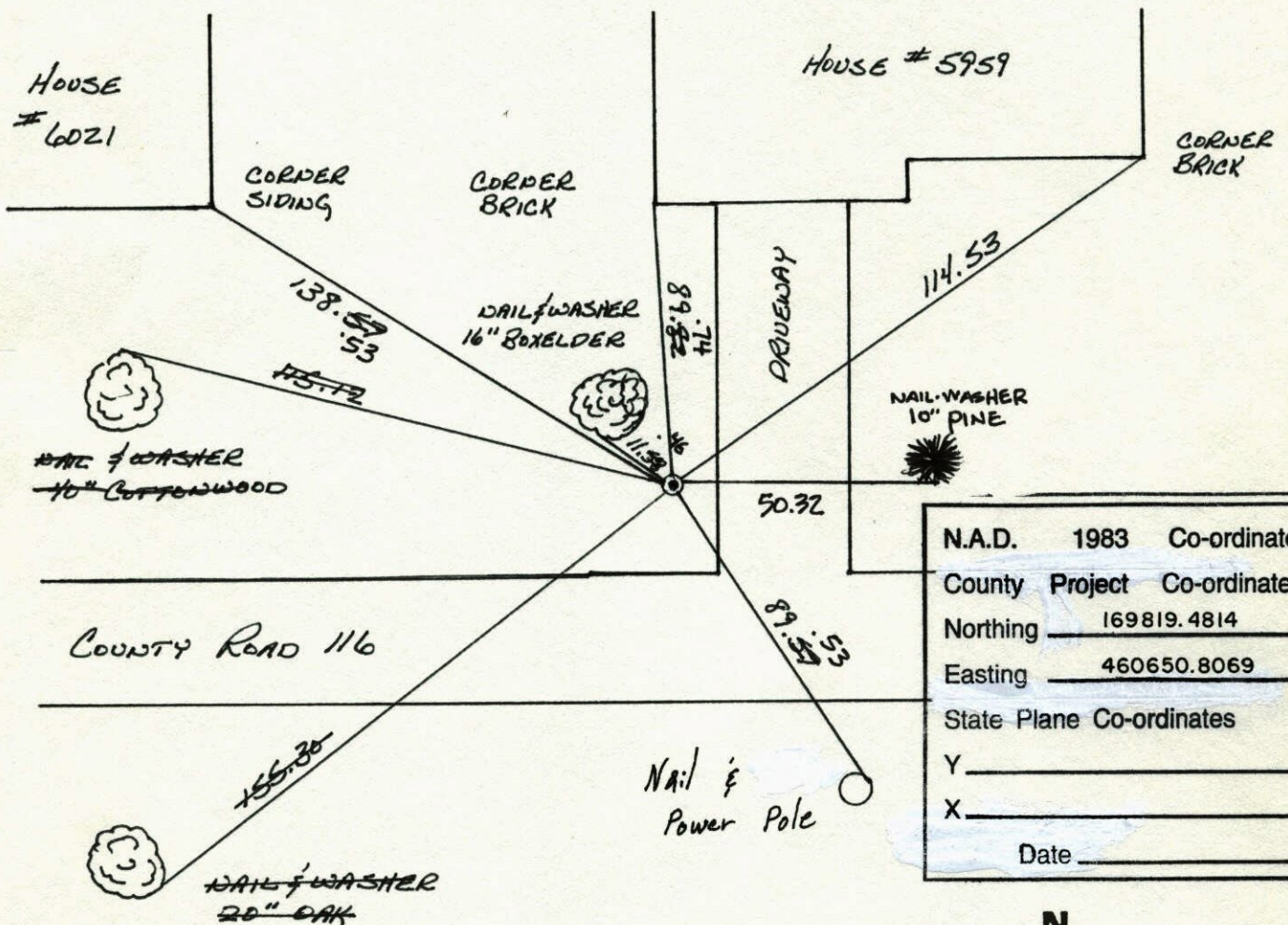
State of Minnesota

NORTH 1/4 Corner of Sec. 35 Township 32 Range 25

I hereby certify that on the 2 day of OCTOBER, 1964, I found the described corner which was evidenced by CONCRETE MONUMENT

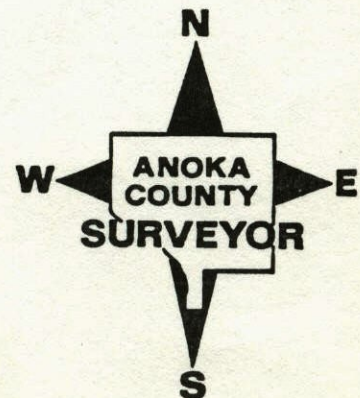
and I further certify that to perpetuate the location of said corner, I did, at the exact location thereof, place a permanent marker consisting of CAST IRON MONUMENT

which reference or witness monuments are located in the manner following:



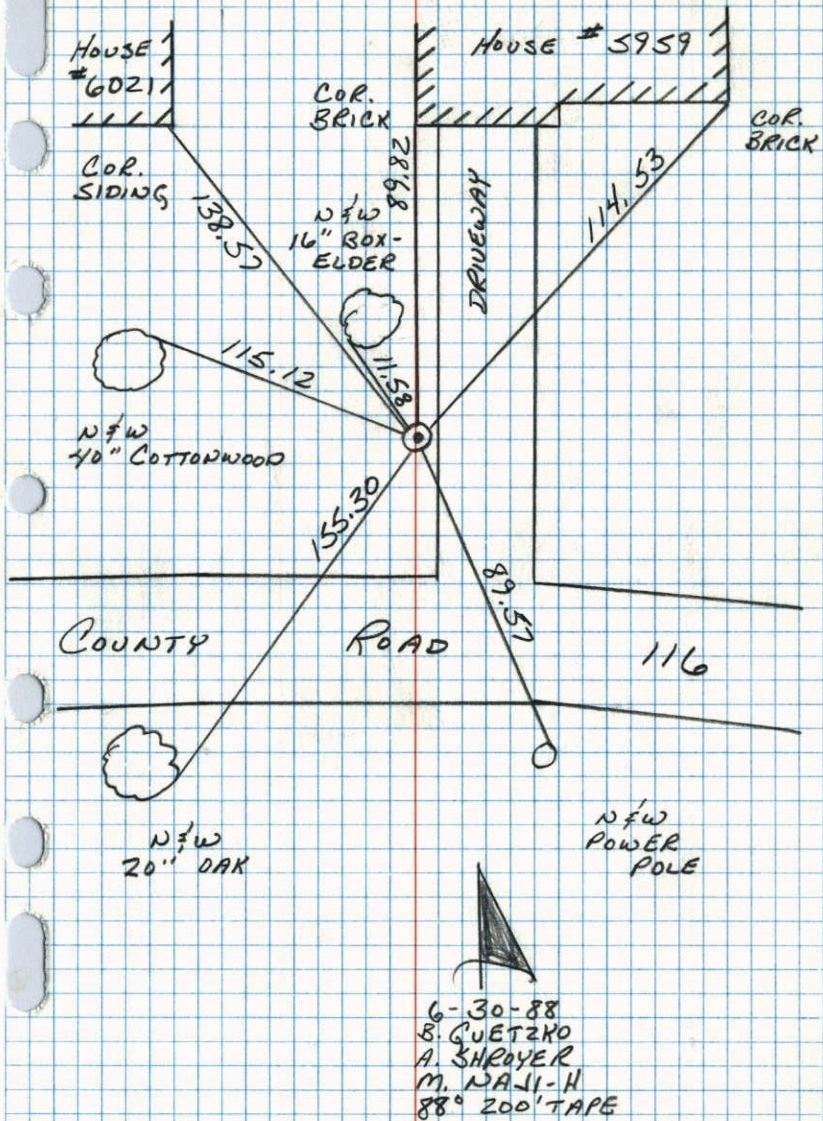
N.A.D.	1983	Co-ordinates
County	Project	Co-ordinates
Northing		169819.4814
Easting		460650.8069
State Plane Co-ordinates		
Y		_____
X		_____
Date _____		

Revised date	Revised date	Revised date
8-17-82		
7-24-85		
6-30-88		
8-4-93		
1-11-00		



N<sup>1</sup>/<sub>4</sub> CORNER SEC. 35 T32 R25

RETIED CAST IRON MONUMENT.



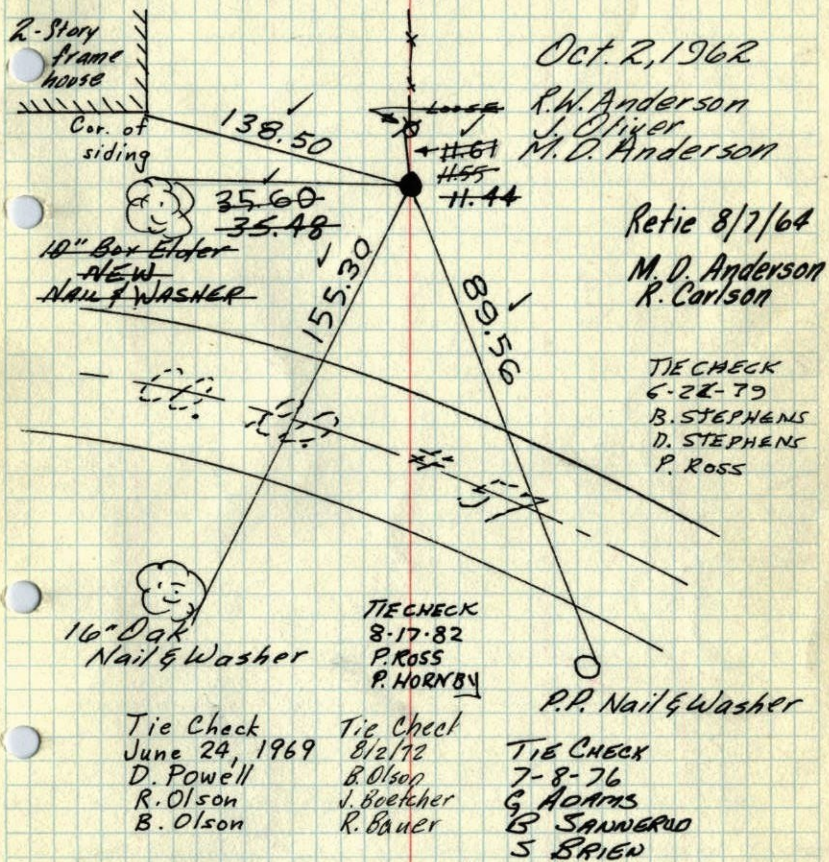
NO. 448

TELEPHONE

N<sup>1</sup>/<sub>4</sub> Cor. Sec. 35-32-25

Found Conc. Mon. down 1'

Lowered Conc. Mon. and set Cast Iron monument on surface flush.



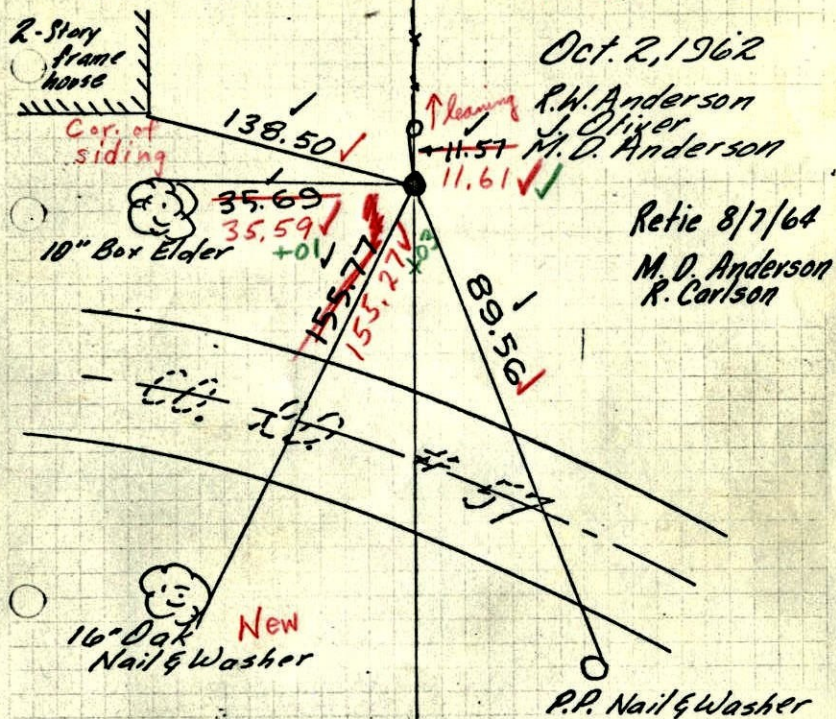
ROLAND W. ANDERSON  
COUNTY SURVEYOR  
ANOKA COUNTY, MINNESOTA

TEMPERATURE CORRECTED  
AND HORIZONTALLY  
TAPED MEASUREMENTS

N<sup>1</sup>/<sub>4</sub> Cor. Sec. 35-32-25

Found Conc. Mon. down 1'

Lowerd Conc. Mon. and Set Cast Iron monument on surface flush.



Oct. 2, 1962

R.W. Anderson  
J. Oliver  
M.D. Anderson

Retie 8/7/64

M.D. Anderson  
R. Carlson

P.P. Nail & Washer

6/24/69

#4 - 65° ✓

D. Powell  
R. Olson  
B. Olson

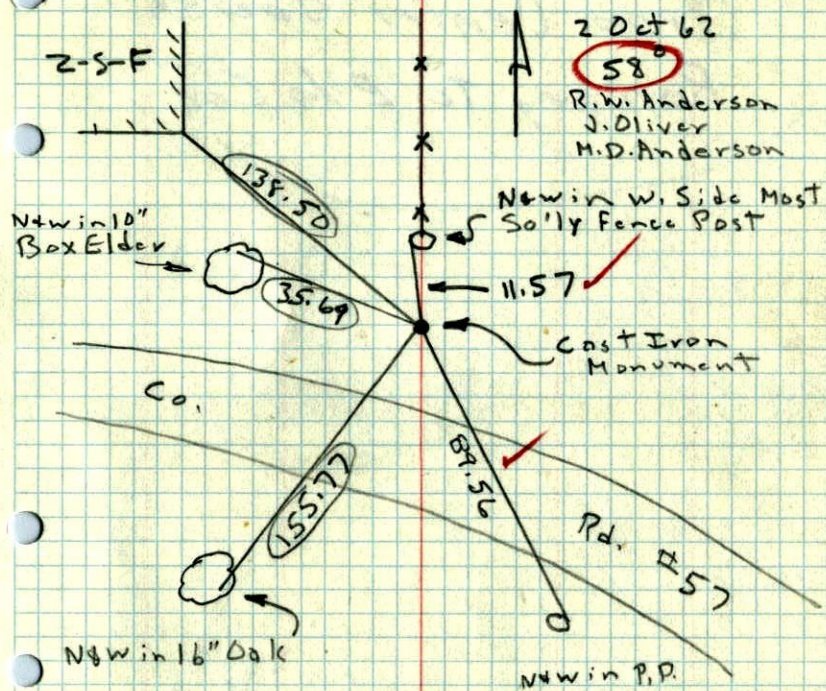
ROLAND W. ANDERSON COUNTY SURVEYOR  
ANOKA COUNTY, MINNESOTA

TEMPERATURE CORRECTED  
AND HORIZONTALLY  
TAPED MEASUREMENTS

N<sup>1</sup>/<sub>4</sub> Cor. Sec. 35, T32, R25

Found Conc. Mon. down 1' - Lowered Conc. Mon. and Set Cast Iron Mon. on Top of it so that C.I. Mon. is flush.

○ Ties are 1960 Ties that are good



2 Oct 62

58°

R.W. Anderson  
J. Oliver  
M.D. Anderson

New in W. Side Most  
Sally Fence Post

Cast Iron  
Monument

Rd. #57

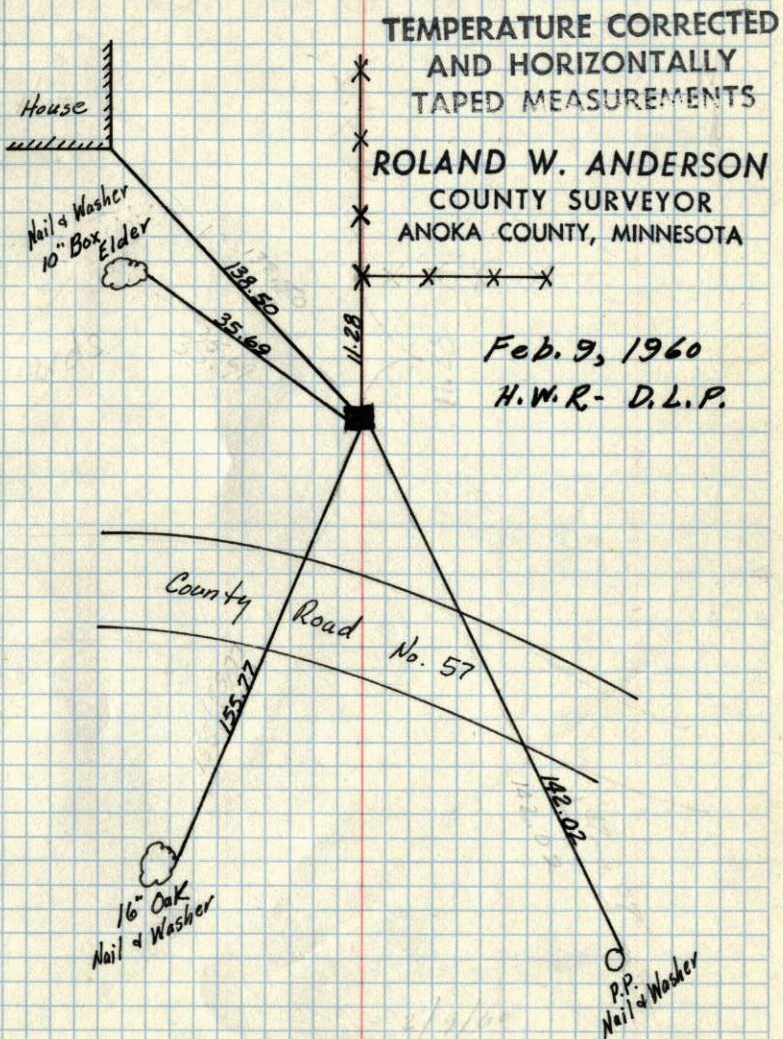
New in P.P.

620 - 2610.24  
TEMP. CORR 2610.14

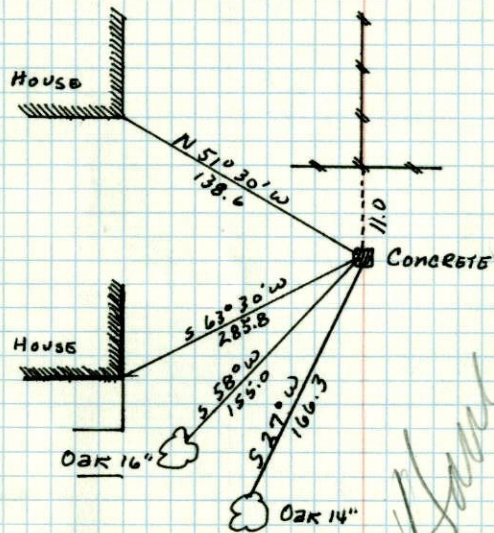
DISTANCE MEASURED  
BY J. OLIVER & M.D. ANDERSON  
From Center Sec. 35  
Ramsey to E 1/4 Cor

67

N 1/4 Corner Sec. 35 T32 R25  
Cor. Mon. down .5'



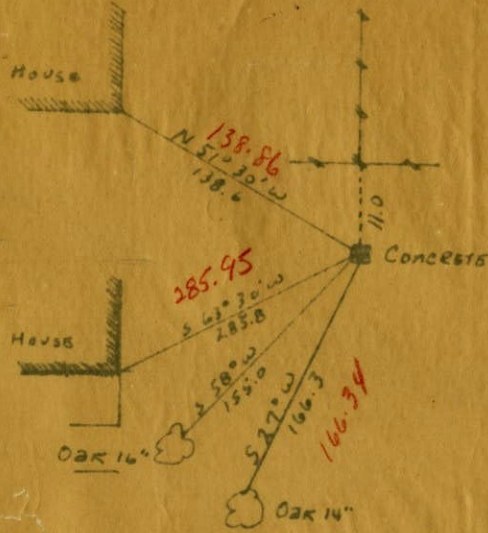
N<sup>1</sup>/<sub>4</sub> CORNER OF SEC. 35, T32, R25  
CONC. MON.



*Have more pits*

Sept 22, 1945  
CORTWRIGHT

N<sup>1</sup>/<sub>4</sub> CORNER OF SEC. 35, T32, R25  
CONC. MON.



Sept 22, 1945  
CORTWRIGHT