

CERTIFICATE OF LOCATION OF GOVERNMENT CORNER

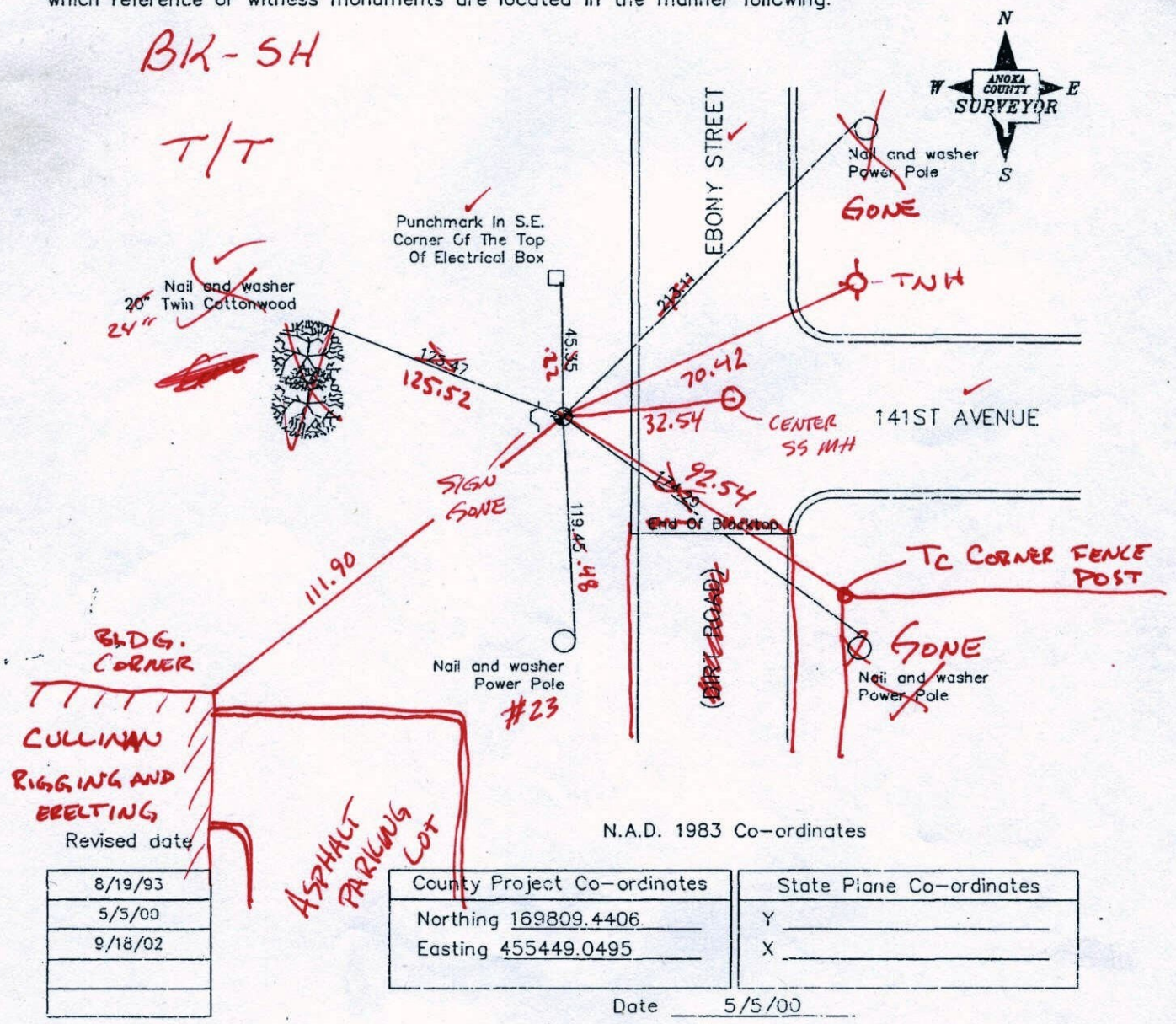
County of Anoka State of Minnesota

South 1/4 Corner of Sec. 27 Township 32 Range 25

I hereby certify that on the 5th day of January, 1961, I found the described corner which was evidenced by a 2" iron pipe

and I further certify that to perpetuate the location of said corner, I did, at the exact location thereof, place a permanent marker consisting of ~~a cast iron monument with sign and post on the west side~~ **FOUND 1/2" IP LS 24332 AND LS43808**

which reference or witness monuments are located in the manner following:



CERTIFICATE OF LOCATION OF GOVERNMENT CORNER

County of Anoka

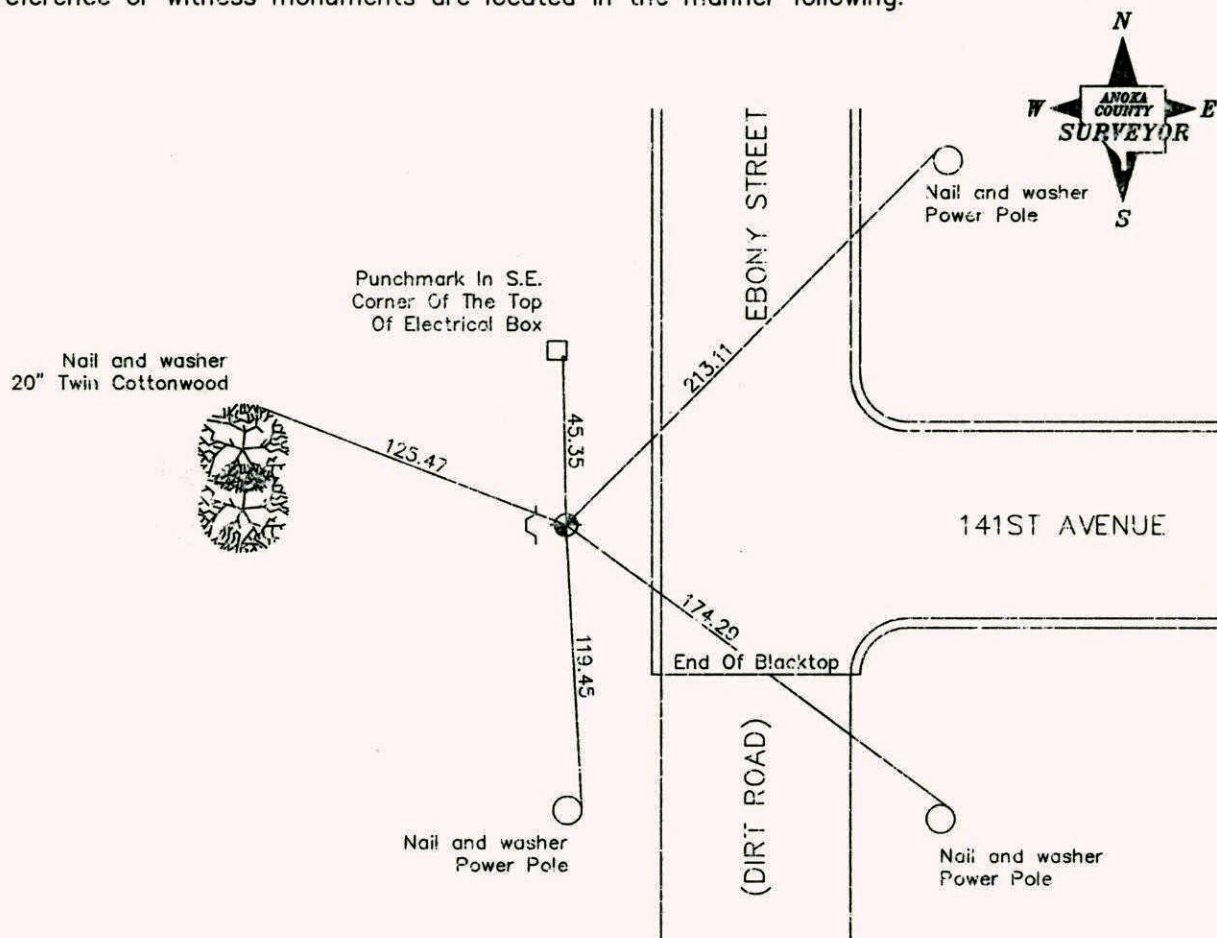
State of Minnesota

South 1/4 Corner of Sec. 27 Township 32 Range 25

I hereby certify that on the 5th day of January, 1961, I found the described corner which was evidenced by a 2" iron pipe

and I further certify that to perpetuate the location of said corner, I did, at the exact location thereof, place a permanent marker consisting of a cast iron monument with sign and post on the west side

which reference or witness monuments are located in the manner following:



Revised date

8/19/93
5/5/00
9/18/02

N.A.D. 1983 Co-ordinates

County Project Co-ordinates Northing <u>169809.4406</u> Easting <u>455449.0495</u>	State Plane Co-ordinates Y _____ X _____
--	--

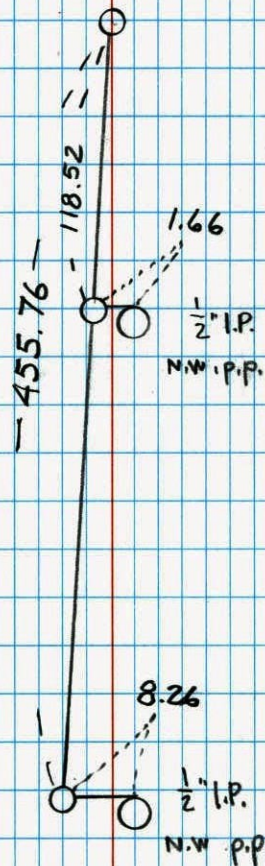
Date 5/5/00

SOUTH 1/4 COR. SEC 27 T 32 R 25

REMOVED CAST IRON MON FOR
CONST. & RETIED



5-29-01
J SIMMER
B KLEMEZ



NO. 446

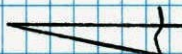
NATIONAL PRINTFAST

SOUTH 1/4 COR. SEC 27 T 32 R 25

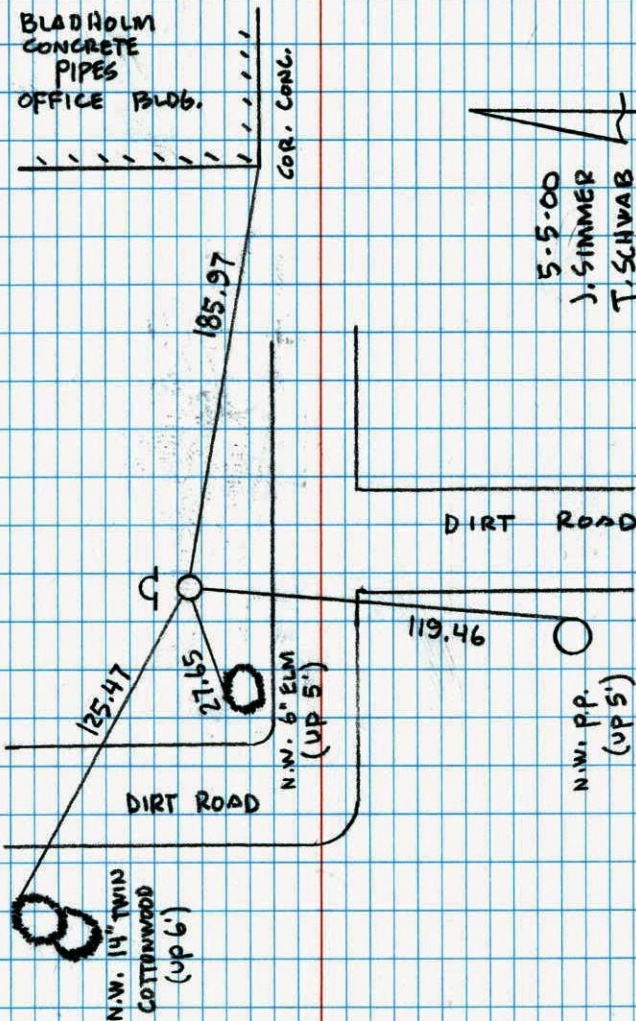
GPS & RETIED CAST IRON MONUMENT
WITH SIGN & POST ON NORTH SIDE

BLADHOLM
CONCRETE
PIPES
OFFICE BLDG.

COR. CONC.



5-5-00
J. SIMMER
T. SCHWAB



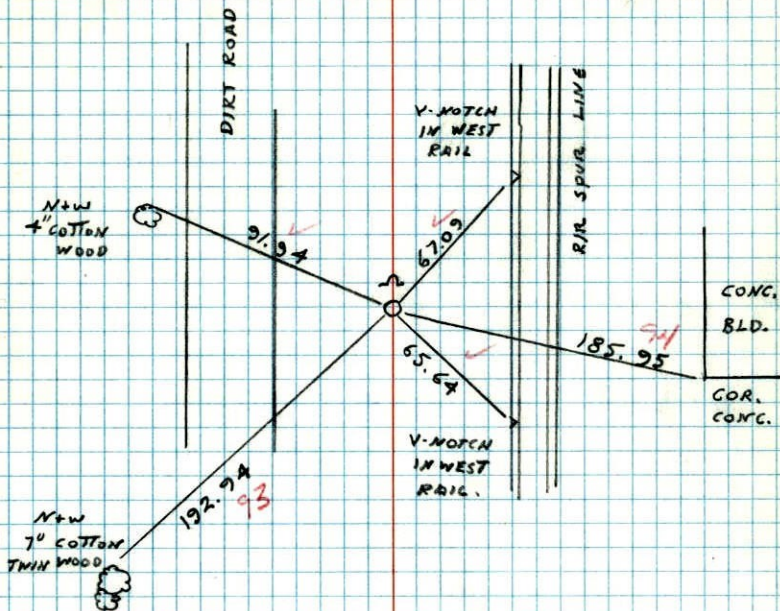
NO. 446

NATIONAL PRINTFAST

5/4 COR. SEC. 27 T32 R25

RESET EAST IRON MONUMENT. PUT SIGN
AND POST ON NORTH SIDE.

200' 58"
5-20-83
M. LARSON
B. GUETZKO
D. NAGLOK



NO. 448

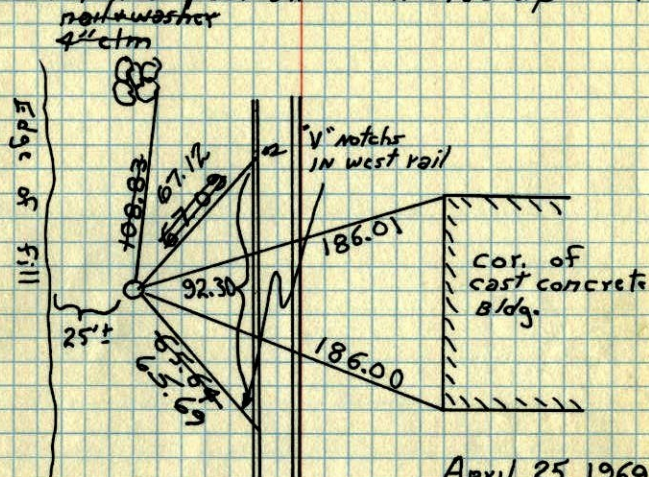
TELEPHONE

118

5/4 Cor. Sec. 27 T32 R 25

Reset cast iron monument from
area reconstruction. C.I. Flush

Steel fence post on North Side up 3'±.



April 25, 1969

M.D. Anderson
H.J. Larson
R.A. Olson

Tie Check
8/7/72
B. Olson
J. Bletcher
R. Bauer

TIE CHECK
6-26-79
B. STEPHENS
D. STEPHENS
P. ROSS

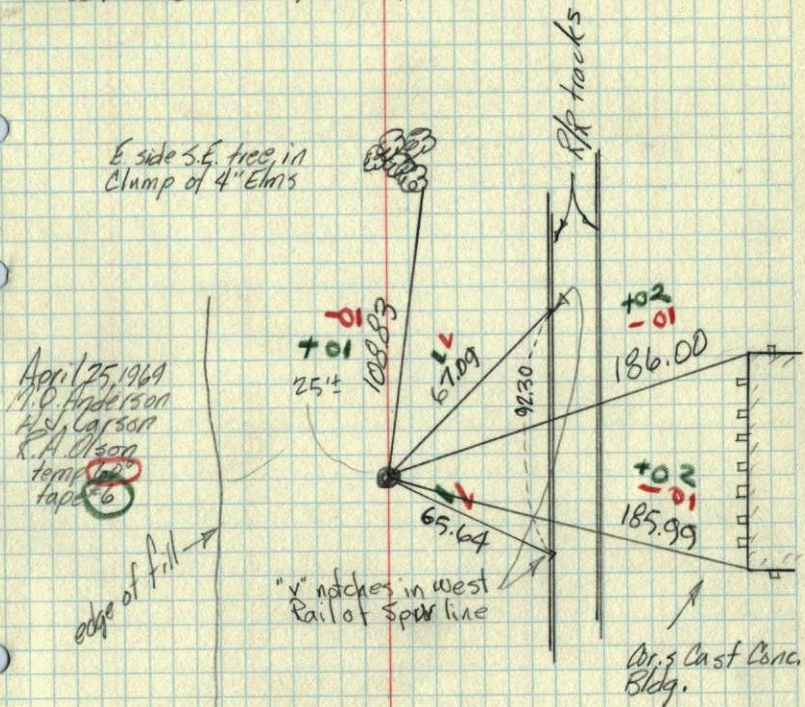
TIE CHECK
7-8-76
G. ADAMS
B. SANNERUD
S. BRIEN

TEMPERATURE CORRECTED
AND HORIZONTALLY
TAPED MEASUREMENTS

ROLAND W. ANDERSON
COUNTY SURVEYOR
ANOKA COUNTY, MINNESOTA

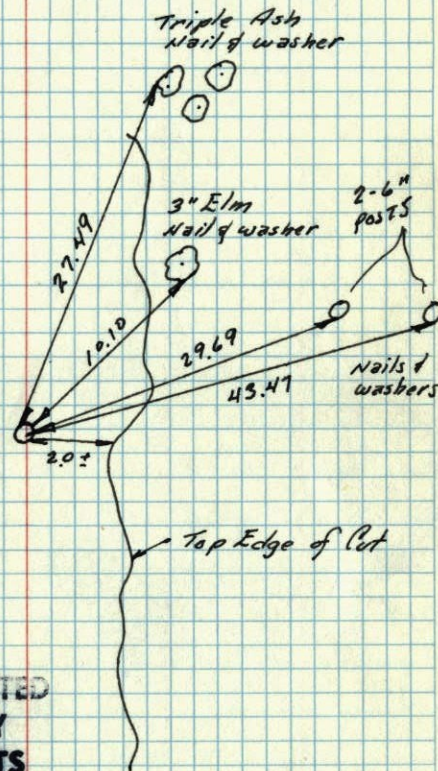
S. 1/4 Cor. Sec. 27-T32-R25

Reset cor. from area reconstruction (Cor. East)
Set Cast Iron Mon. flush



S. 1/4 Cor. Sec. 27-32-25

Found 2" Iron flush with grd. at Bottom of Cut. Old Conc. Mon. gone



TEMPERATURE CORRECTED
AND HORIZONTALLY
TAPED MEASUREMENTS

5 Jan. 1961

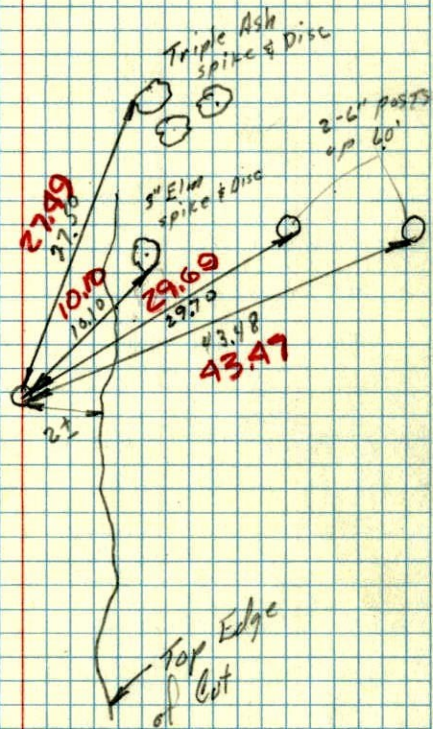
R. Freeman
M. Anderson.

ROLAND W. ANDERSON
COUNTY SURVEYOR
ANOKA COUNTY, MINNESOTA

5 Jan 1961
Freeman - Anderson
+ 32°

S 1/4 Cor Sec 27-32-25

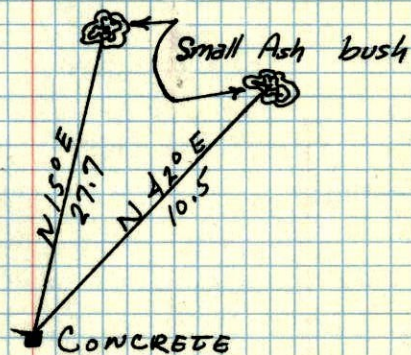
Found 2" iron pipe flush with grd.
at Bottom of Cut, old Conc. Mon gone



TEMP. CORR.
for +32°

S
N 1/4 CORNER OF SEC. 34, T 32, R 25. ✓

27
CONC. MON.



28
July 7, 1946
CARTWRIGHT