

# CERTIFICATE OF LOCATION OF GOVERNMENT CORNER

County of Anoka

State of Minnesota

WITNESS ON Corner of Sec. 33 Township 32 Range 25  
N. LINE OF N.W. 1/4

I hereby certify that on the 17<sup>TH</sup> day of APRIL, 1962, I found the described corner which was evidenced by 4" SQUARE CONCRETE MONUMENT

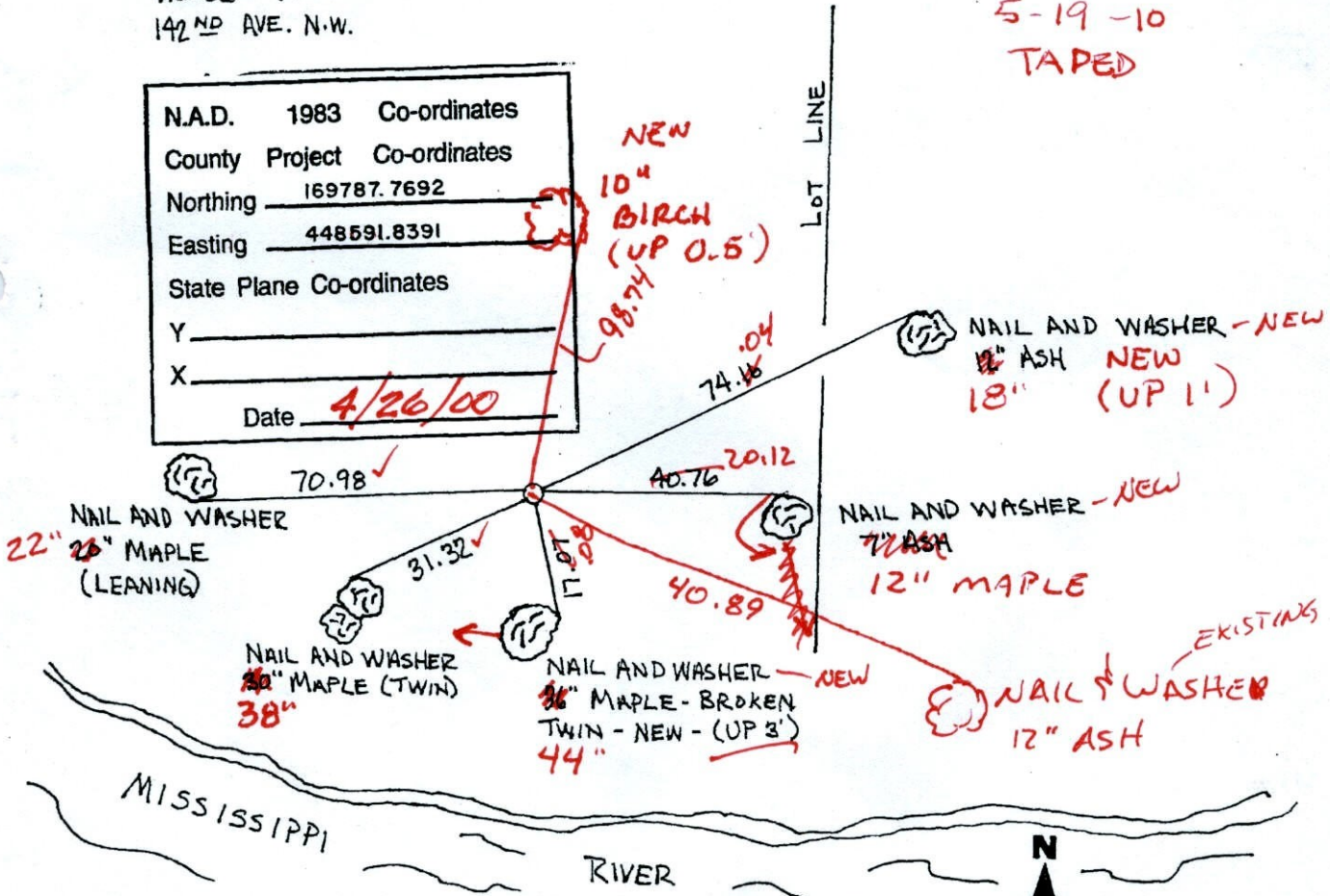
and I further certify that to perpetuate the location of said corner, I did, at the exact location thereof, place a permanent marker consisting of CAST IRON MONUMENT

which reference or witness monuments are located in the manner following:

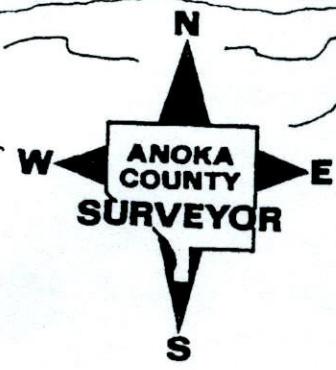
House # 7854  
142<sup>ND</sup> AVE. N.W.

BK-SH  
 5-19-10  
 TAPED

N.A.D.	1983	Co-ordinates
County Project		Co-ordinates
Northing	169787.7692	
Easting	448591.8391	
State Plane Co-ordinates		
Y		
X		
Date	4/26/00	



Revised date	Revised date	Revised date
8-15-85		
6-27-88		
8-20-93		
4-26-00		



# CERTIFICATE OF LOCATION OF GOVERNMENT CORNER

County of Anoka

State of Minnesota

WITNESS ON Corner of Sec. 33 Township 32 Range 25  
N. LINE OF N.W. 1/4

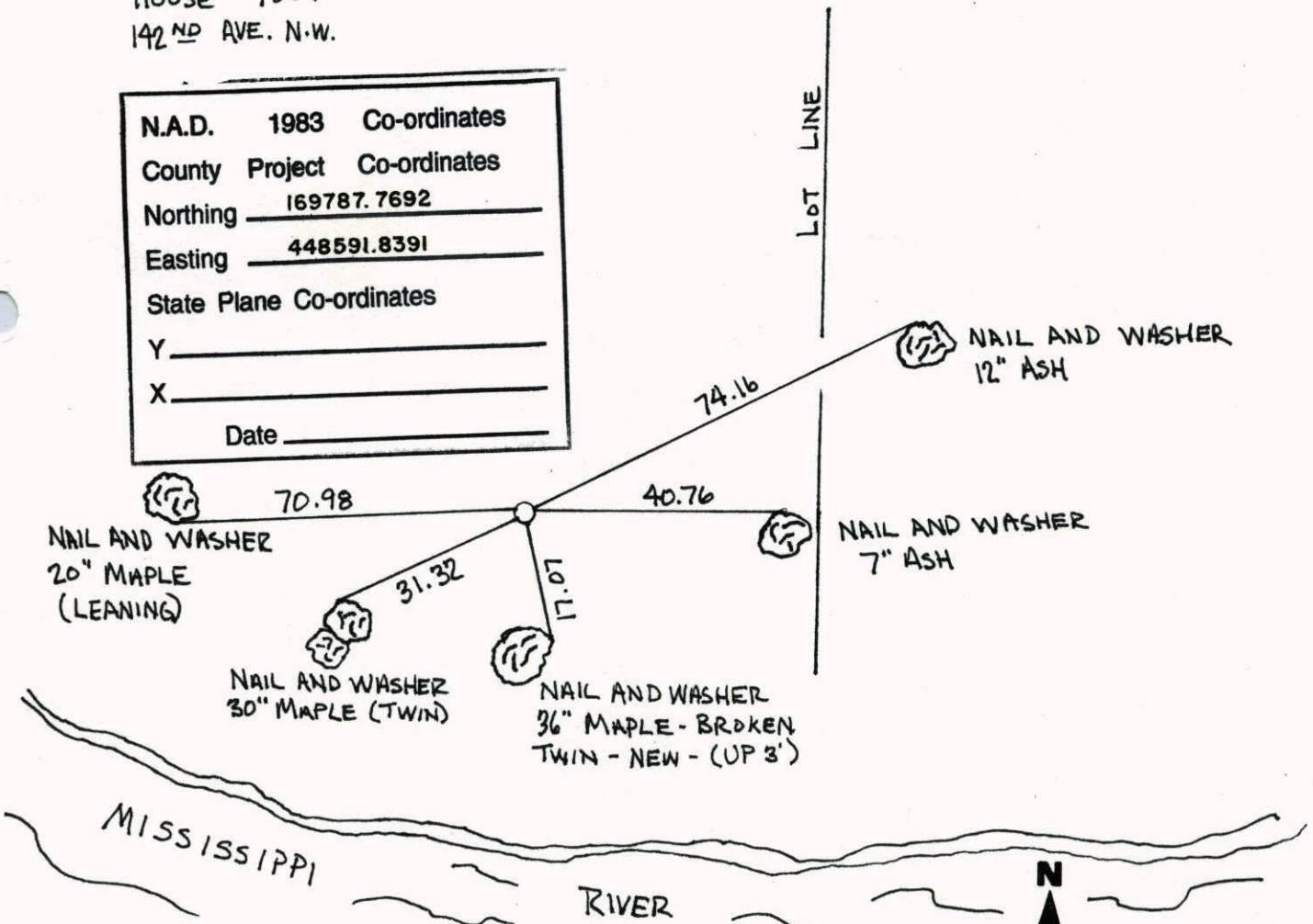
I hereby certify that on the 17<sup>TH</sup> day of APRIL, 1962, I found the described corner which was evidenced by 4" SQUARE CONCRETE MONUMENT

and I further certify that to perpetuate the location of said corner, I did, at the exact location thereof, place a permanent marker consisting of CAST IRON MONUMENT

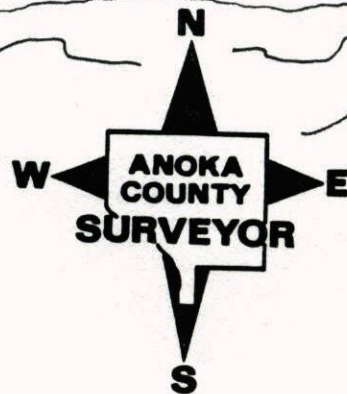
which reference or witness monuments are located in the manner following:

House # 7854  
 142<sup>ND</sup> AVE. N.W.

N.A.D.	1983	Co-ordinates
County	Project	Co-ordinates
Northing	<u>169787.7692</u>	
Easting	<u>448591.8391</u>	
State Plane Co-ordinates		
Y	_____	
X	_____	
Date	_____	



Revised date	Revised date	Revised date
8-15-85		
6-27-88		
8-20-93		
4-26-00		



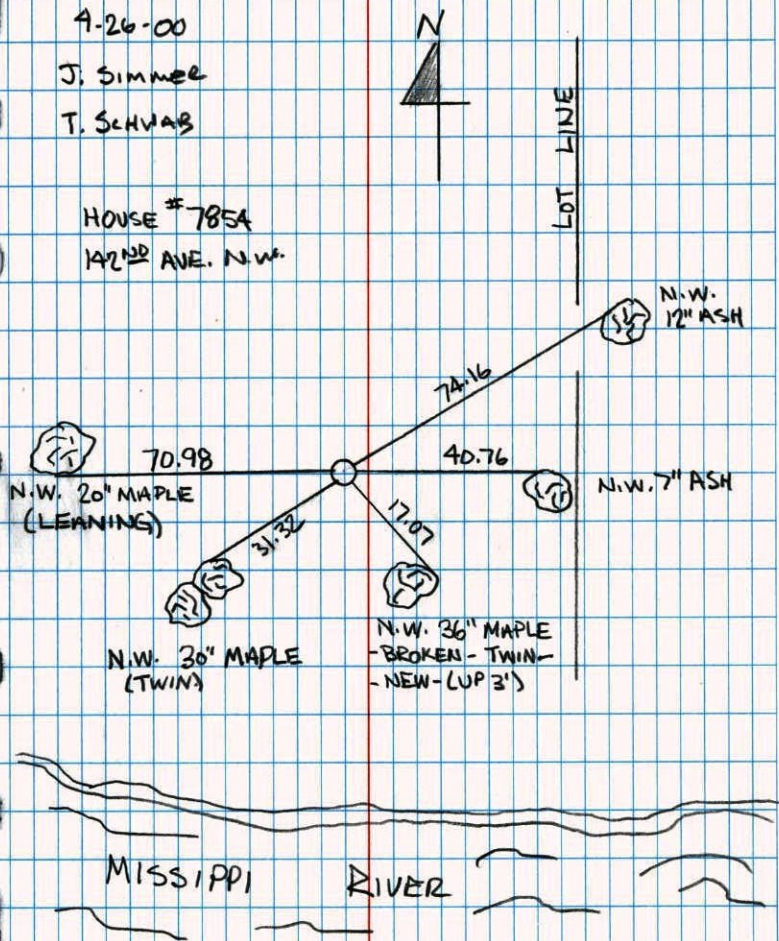
WITNESS COR. ON N. LINE OF N.W. 1/4 SEC. 33, T.32, R.25  
 RETIED CAST IRON MONUMENT DURING GPS.

9-26-00

J. SIMMER

T. SCHVAB

HOUSE # 785A  
 142<sup>ND</sup> AVE. N.W.



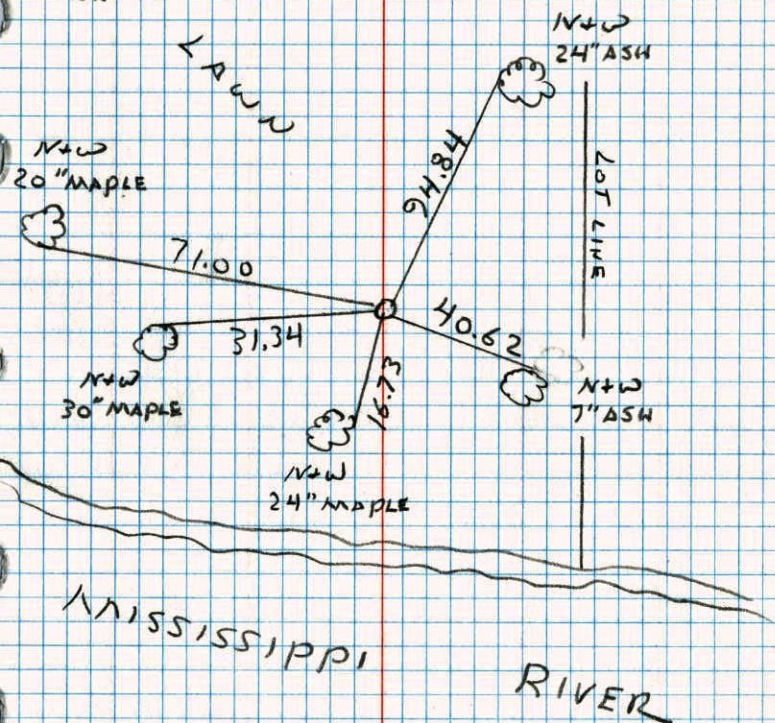
WITNESS ON NORTH LINE OF SEC 33  
 T32 R25 (OF NW1/4)

RETIED CAST IRON MON

8-20-93

JA

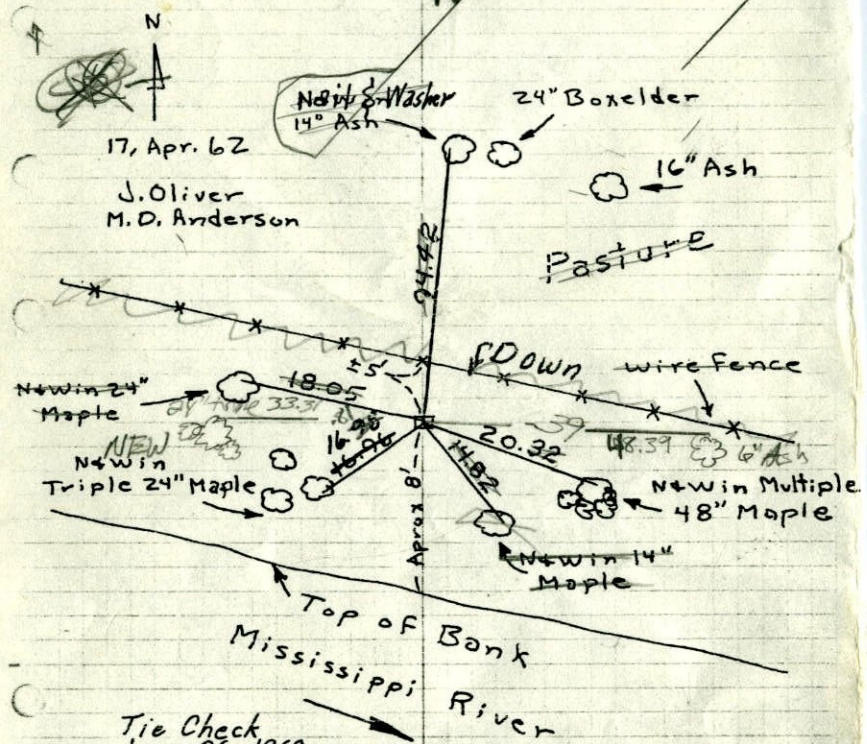
JA



8-1-85 broken  
 one tie 121  
 Harry

M.C. on N. Line of Sec. 33, T32, R25

Found 4" Sq. Conc. Mon. Flush



Tie Check  
 June 26, 1969  
 D. Powell  
 R. Olson  
 B. Olson

TIE CHECK TEMPERATURE CORRECTED  
 6-22-79  
 B. STEPHENS AND HORIZONTALLY  
 D. STEPHENS TAPED MEASUREMENTS  
 P. ROSS

Tie Check  
 8/9/76  
 B. Olson  
 J. Boetcher  
 R. Bauer

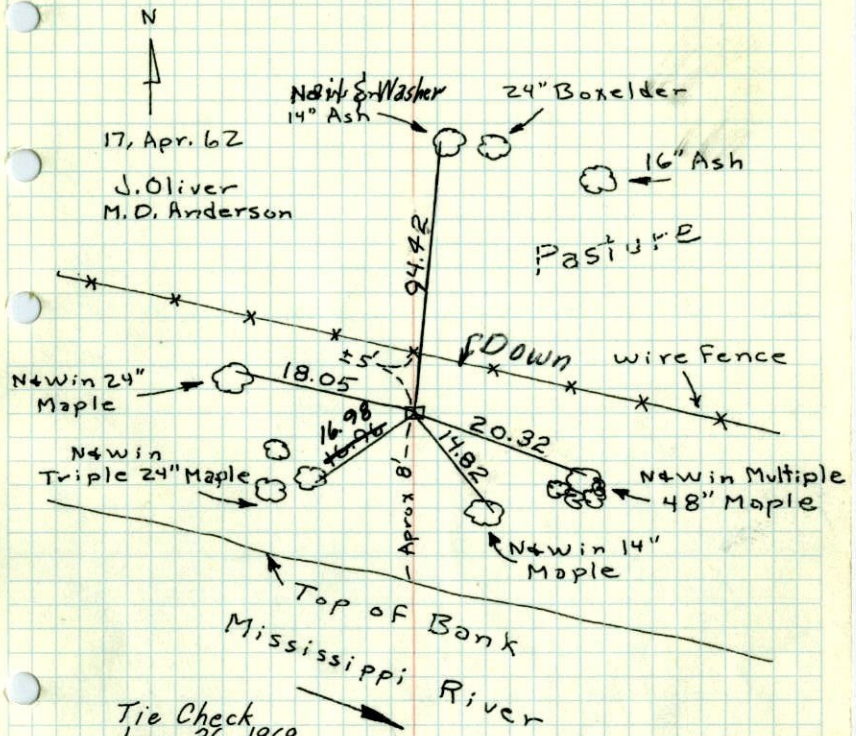
replaced broken concrete with  
 C.I. down .3'±.

TIE CHECK  
 7-8-76  
 G. ADAMS  
 B. SANDERSON  
 S. BRIEN

ROLAND W. ANDERSON  
 COUNTY SURVEYOR  
 ANOKA COUNTY, MINNESOTA

M.C. on N. Line of Sec. 33, T32, R25

Found 4" Sq. Conc. Mon. Flush



Tie Check  
 June 26, 1969  
 D. Powell  
 R. Olson  
 B. Olson

TIE CHECK TEMPERATURE CORRECTED  
 6-22-79  
 B. STEPHENS AND HORIZONTALLY  
 D. STEPHENS TAPED MEASUREMENTS  
 P. ROSS

Tie Check  
 8/9/76  
 B. Olson  
 J. Boetcher  
 R. Bauer

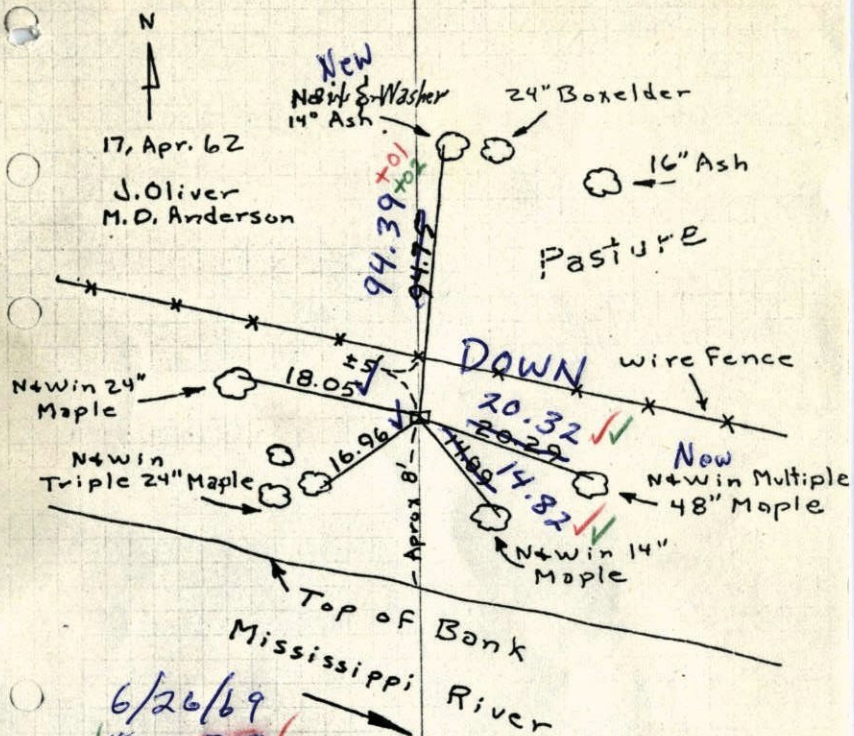
TIE CHECK  
 7-8-76  
 G. ADAMS  
 B. SANDERSON  
 S. BRIEN

ROLAND W. ANDERSON  
 COUNTY SURVEYOR  
 ANOKA COUNTY, MINNESOTA

78

M.C. on N. Line of Sec. 33, T32, R25

Found 4" Sq. Conc. Mon. Flush



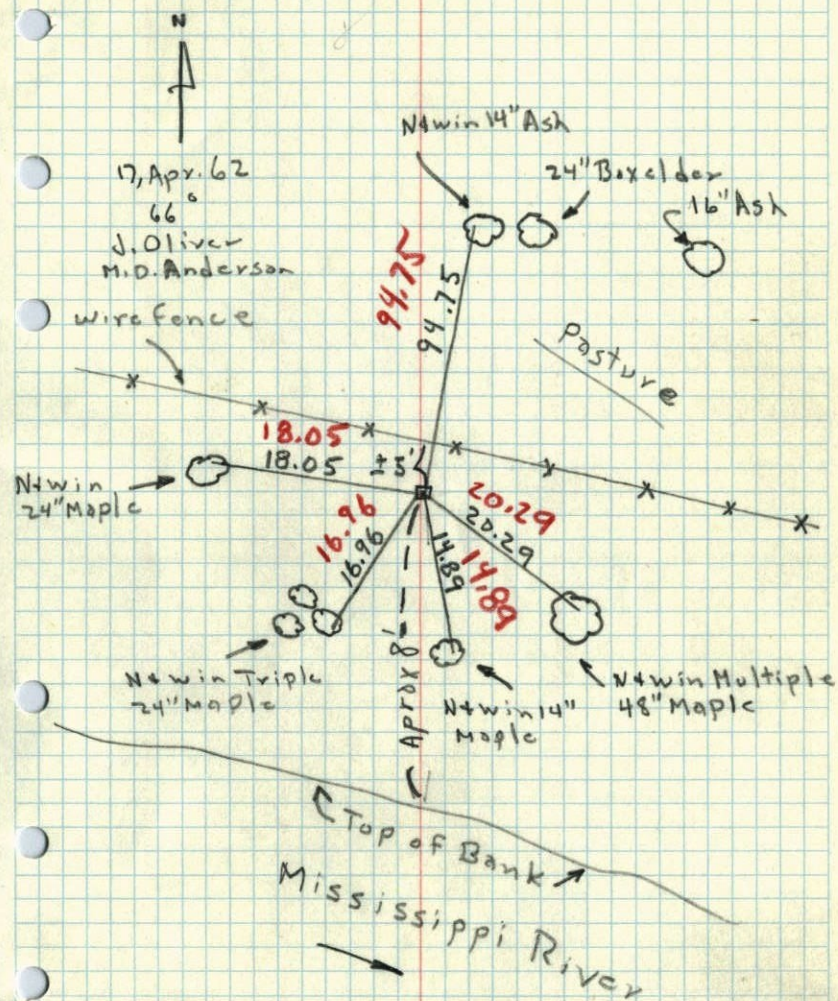
6/26/69  
#4 - 85°  
D. Powell  
R. Olson  
B. Olson

TEMPERATURE CORRECTED  
AND HORIZONTALLY  
TAPED MEASUREMENTS

ROLAND W. ANDERSON  
COUNTY SURVEYOR  
ANOKA COUNTY, MINNESOTA

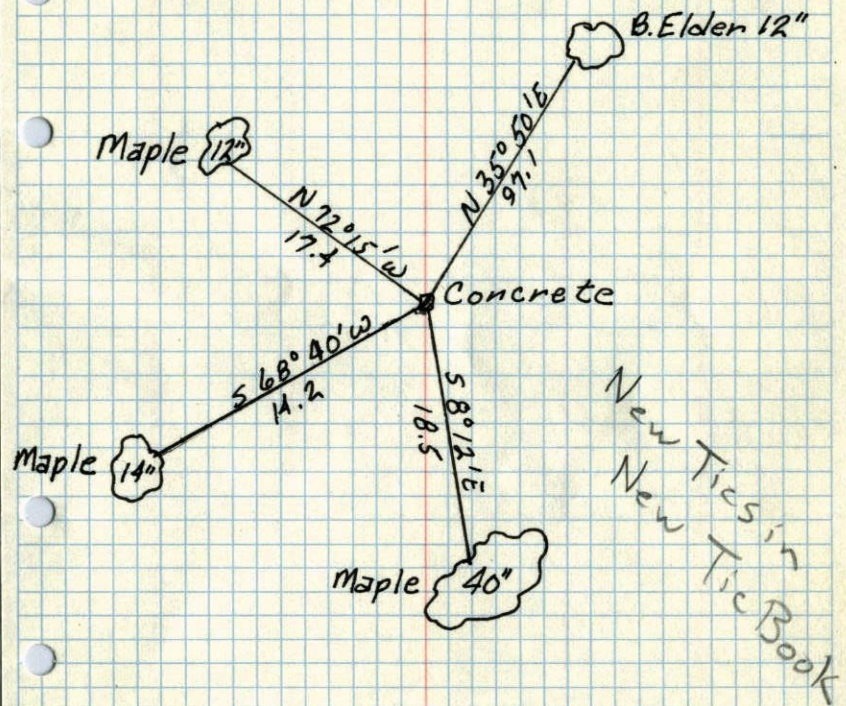
M.C. on N. Line of Sec. 33, T32, R25

Found 4" Sq. Conc. Mon. Flush



Top of Bank  
Mississippi River

M.C. CORNER OF N. Line Sec. 33, T32, R25 ✓  
CONC. MON.



MAY 10, 1944  
CARTWRIGHT