

# CERTIFICATE OF LOCATION OF GOVERNMENT CORNER

County of Anoka State of Minnesota

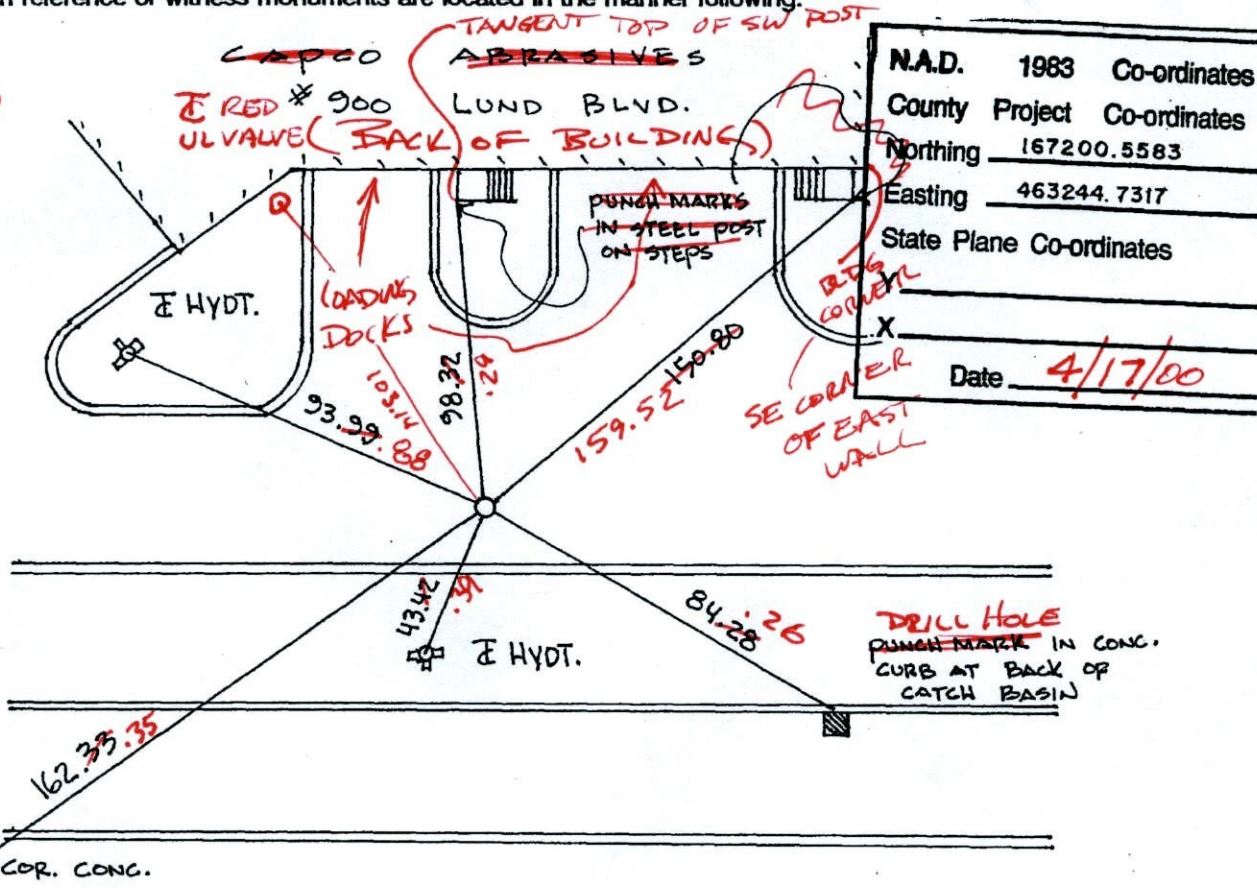
EAST 1/4 Corner of Sec. 35 Township 32 Range 25

I hereby certify that on the 19<sup>TH</sup> day of APRIL, 1962 I found the described corner which was evidenced by 4" x 4" CONCRETE MONUMENT

and I further certify that to perpetuate the location of said corner, I did, at the exact location thereof, place a permanent marker consisting of CAST IRON MONUMENT

which reference or witness monuments are located in the manner following:

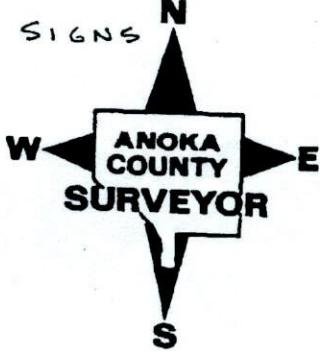
*BK-5H  
4-5-10  
T/T*



N.A.D.	1983	Co-ordinates
County	Project	Co-ordinates
Northing	167200.5583	
Easting	463244.7317	
State Plane Co-ordinates		
X		
Date	4/17/00	

Revised date	Revised date	Revised date
8   11   93		
10   25   96		
4   17   00		

REPLACED



# CERTIFICATE OF LOCATION OF GOVERNMENT CORNER

County of Anoka

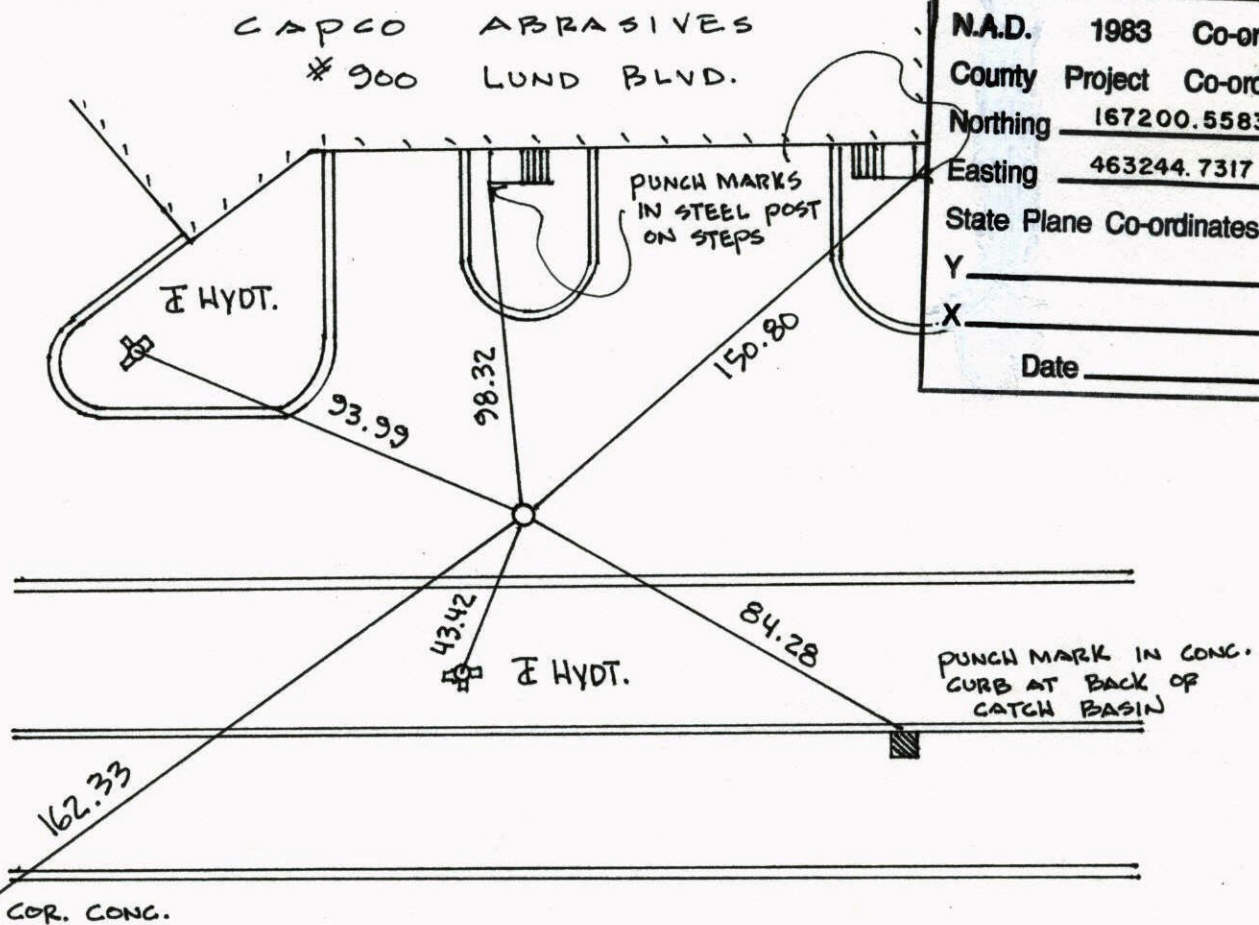
State of Minnesota

EAST 1/4 Corner of Sec. 35 Township 32 Range 25

I hereby certify that on the 19<sup>TH</sup> day of APRIL, 1962, I found the described corner which was evidenced by 4" x 4" CONCRETE MONUMENT

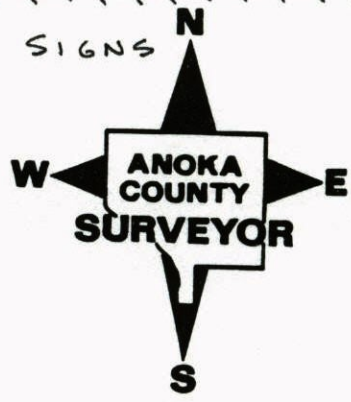
and I further certify that to perpetuate the location of said corner, I did, at the exact location thereof, place a permanent marker consisting of CAST IRON MONUMENT

which reference or witness monuments are located in the manner following:



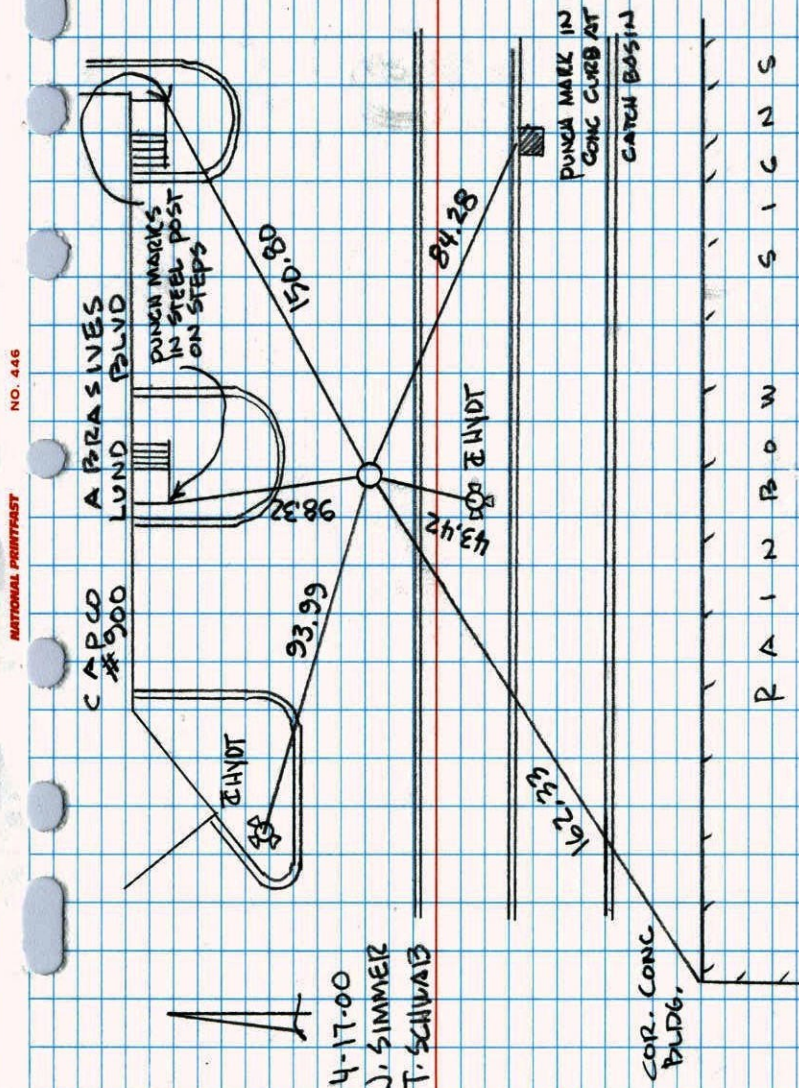
N.A.D.	1983	Co-ordinates
County	Project	Co-ordinates
Northing	167200.5583	
Easting	463244.7317	
State Plane Co-ordinates		
Y	_____	
X	_____	
Date	_____	

Revised date	Revised date	Revised date
8 / 11 / 93		
10 / 25 / 96		
4 / 17 / 00		

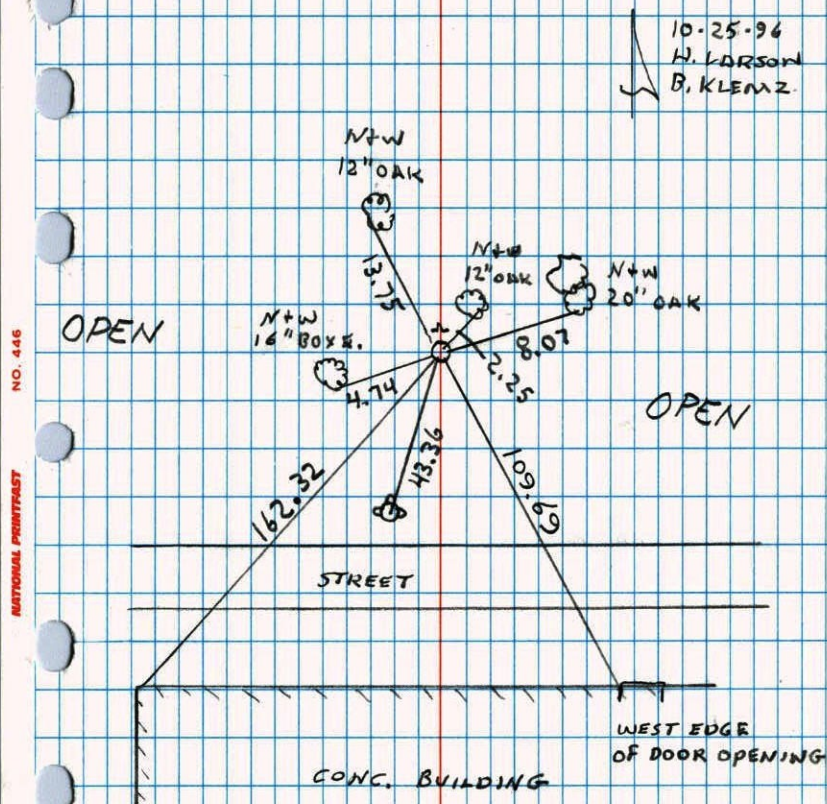


REPLACED

EAST 1/4 COR SEC 35 T 32 R 25  
 REPLACED & GPS EAST IRON MON.  
 CONC. MON. DESTROYED

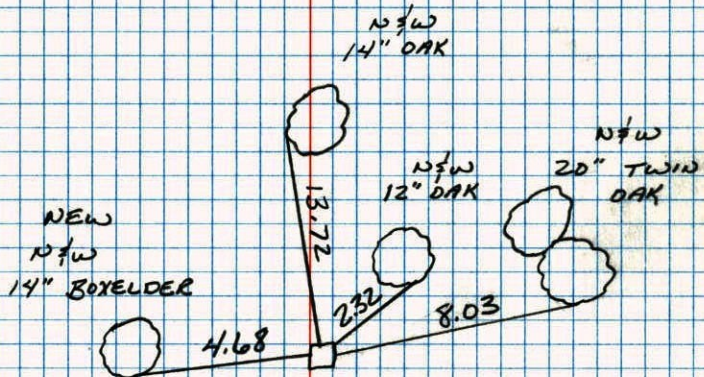


E 1/4 COR. SECTION 35 T 32 R 25  
 TOOK ADDITIONAL TIES BECAUSE OF  
 CONSTRUCTION SIGN POST ON N. SIDE



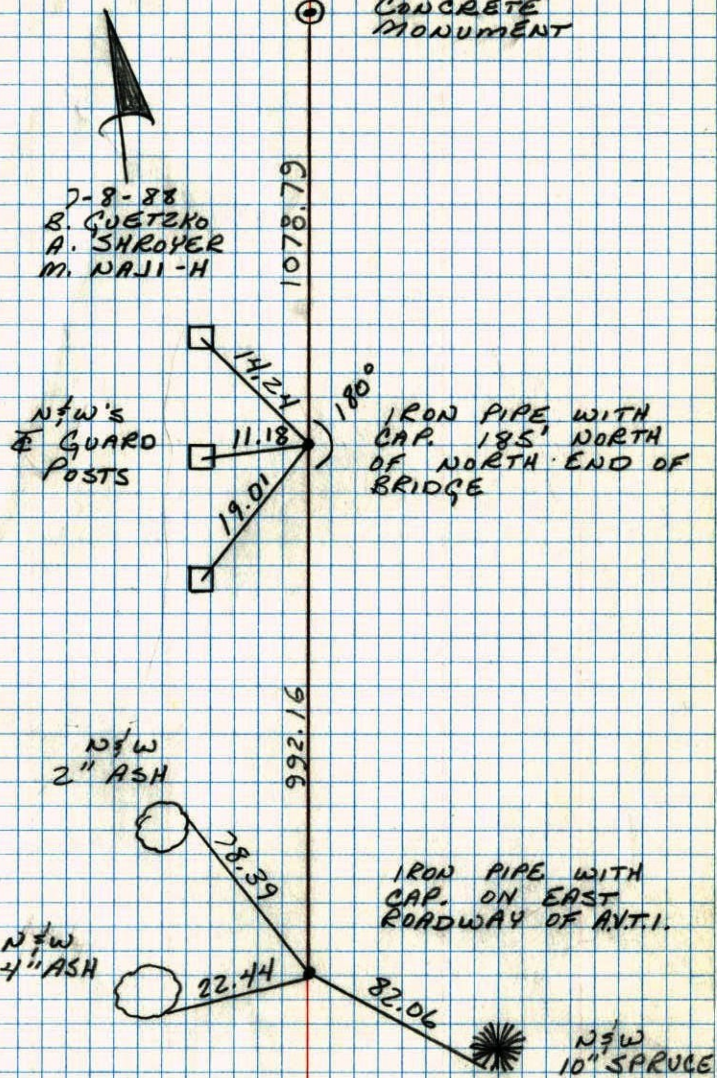
E<sup>1</sup>/<sub>4</sub> CORNER SEC 35 T32 R25

RETIRED 4" SQUARE CONCRETE MONUMENT



FIELD

7-8-88  
B. GUETZKO  
M. NAJI-H  
A. SHROYER  
85° 200' TAPE

CONSTRUCTION TIES  
E<sup>1</sup>/<sub>4</sub> CORNER SEC 35 T32 R25E<sup>1</sup>/<sub>4</sub> Cor  
CONCRETE  
MONUMENT

E 1/4 Cor. of Sec. 35, T32, R25

Found 4" Sq. Conc. Mon. down 0.5'

Iron Rod on SE side up 1'±.



19, Apr. 62  
J. Oliver  
M.D. Anderson

Field

Tree line

Field

N4w in 15" Triple Oak

Nail & Washer  
8" Oak

6" Tri. Boxelder  
Nail & Washer

Picow. line

4.62

8.29

32.33

N4w in 28" Maple

Field

Tie Check  
June 26, 1969  
D. Powell  
R. Olson  
B. Olson

TEMPERATURE CORRECTED  
AND HORIZONTALLY  
TAPED MEASUREMENTS

Tie Check  
8/8/72  
B. Olson  
J. Boetche  
R. Bauer

TIECHECK  
6-27-79  
B. STEPHENS  
D. STEPHENS  
P. ROSS

Retie 8/12/64  
M. D. Anderson  
J. Dunlop

TIECHECK  
7-8-76  
G. ADAMS  
B. SAMMERS  
S. BREN

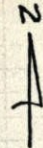
TIECHECK  
8-17-82  
P. ROSS  
P. HORNBY

ROLAND W. ANDERSON  
COUNTY SURVEYOR  
ANOKA COUNTY, MINNESOTA

E 1/4 Cor. of Sec. 35, T32, R25

Found 4" Sq. Conc. Mon. down 0.5'

Iron Rod on SE side up 1'±.



19, Apr. 62  
J. Oliver  
M.D. Anderson

Field

Tree line

Field

N4w in 15" Triple Oak

Nail & Washer  
8" Oak

6" Tri. Boxelder  
Nail & Washer  
New

Picow. line

4.62

8.29

32.44

32.32

N4w in 28" Maple  
New

Field

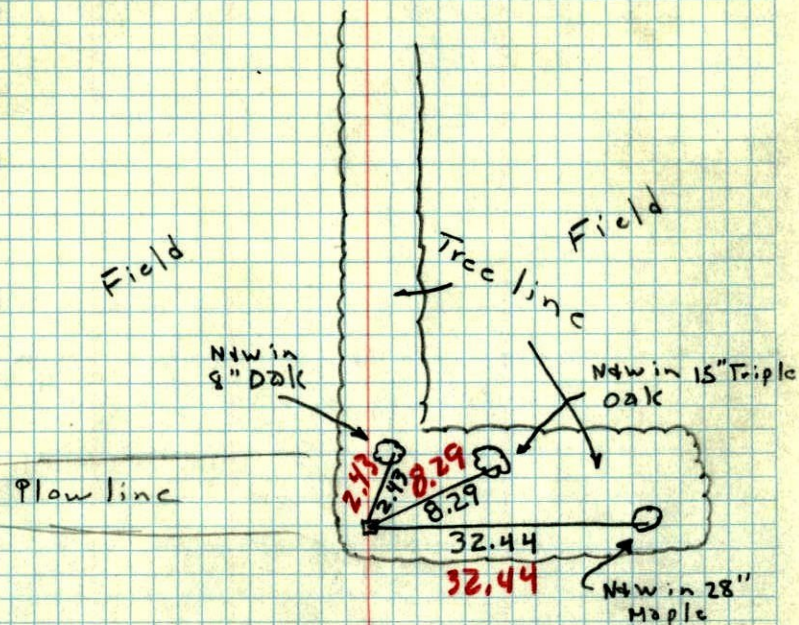
6/24/69  
#4-850  
D. Powell  
R. Olson  
B. Olson

TEMPERATURE CORRECTED  
AND HORIZONTALLY  
TAPED MEASUREMENTS

Retie 8/12/64  
M. D. Anderson  
J. Dunlop

ROLAND W. ANDERSON  
COUNTY SURVEYOR  
ANOKA COUNTY, MINNESOTA

E 1/4 Cor. of Sec. 35, T32, R25  
 Found 4" Sq. Conc. Mon. down 0.5'

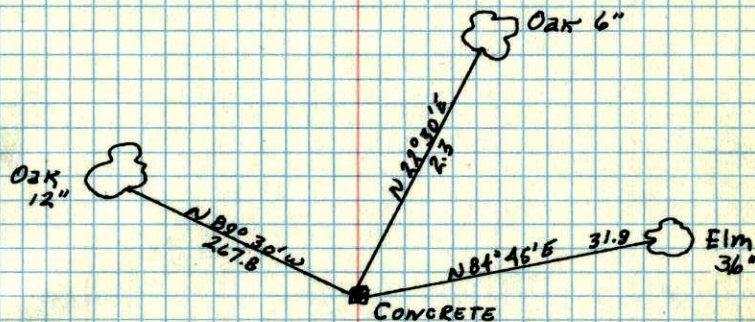


Field



19, Apr. 62  
 54°  
 J. Oliver  
 M. D. Anderson

E 1/4 CORNER OF SEC. 35, T32, R25  
 CONC. MON.



New Ties in  
 New Tie Book

MAY 16, 1945  
 CARTWRIGHT