

CERTIFICATE OF LOCATION OF GOVERNMENT CORNER

County of Anoka

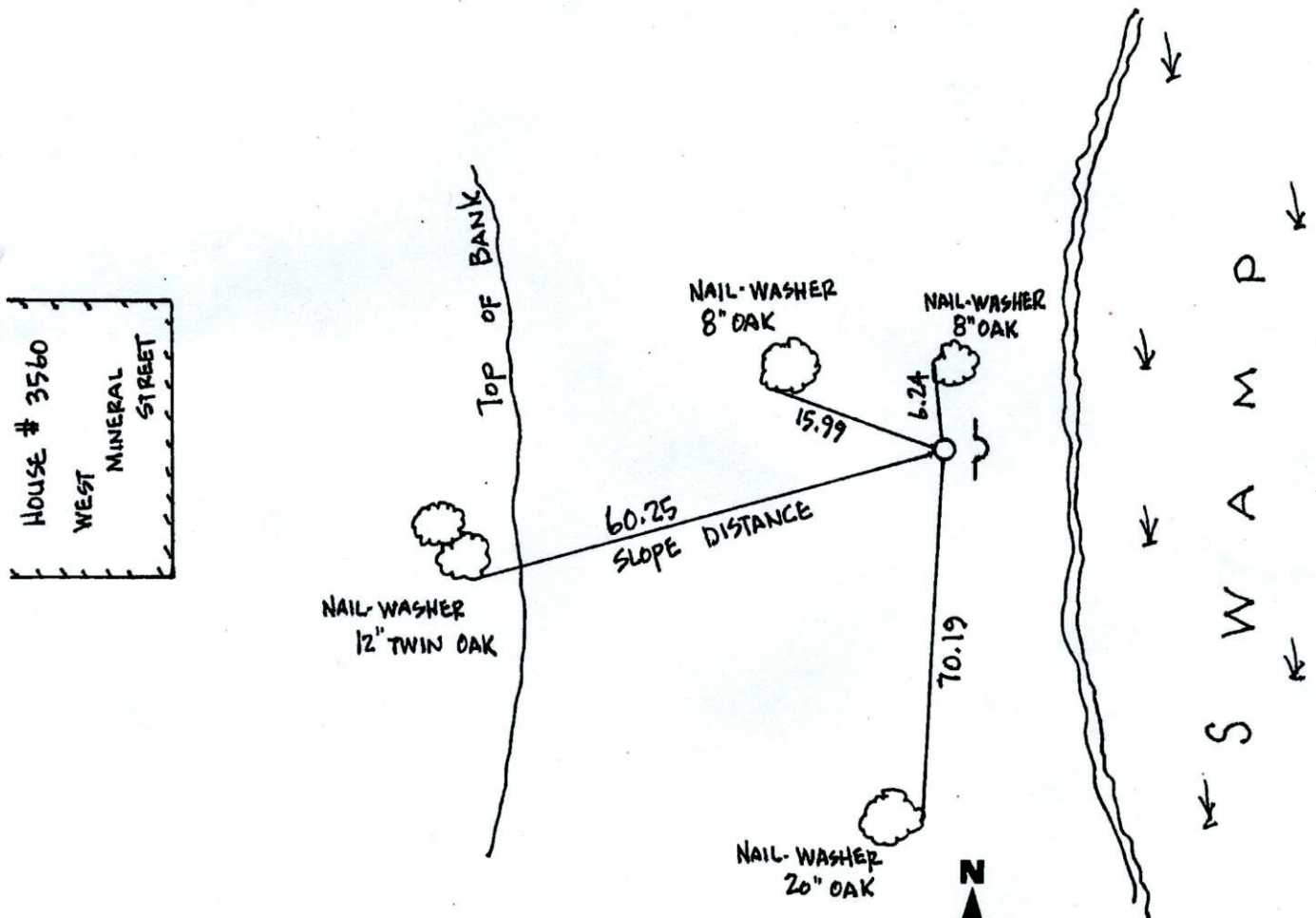
State of Minnesota

CENTER Corner of Sec. 36 Township 32 Range 25

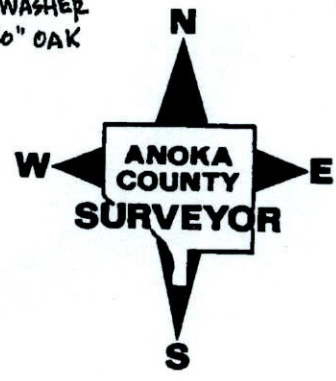
I hereby certify that on the 3RD day of July, 19 63 I found the described corner which was evidenced by OLD FENCE POST

and I further certify that to perpetuate the location of said corner, I did, at the exact location thereof, place a permanent marker consisting of CAST IRON MONUMENT
SIGN & POST ON EAST SIDE

which reference or witness monuments are located in the manner following:



Revised date	Revised date	Revised date
9-16-85		
6-29-88		
11-20-97		

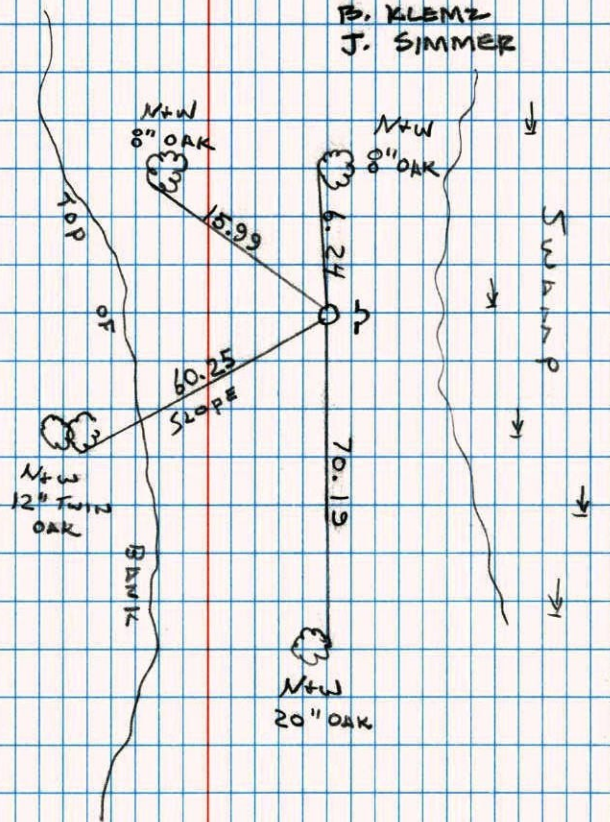


CENTER SECTION 36 T32 R25

RETIRED CAST IRON MONUMENT

SIGN & POST ON EAST SIDE.

11-20-97

H. LARSON
B. KLEMP
J. SIMMER

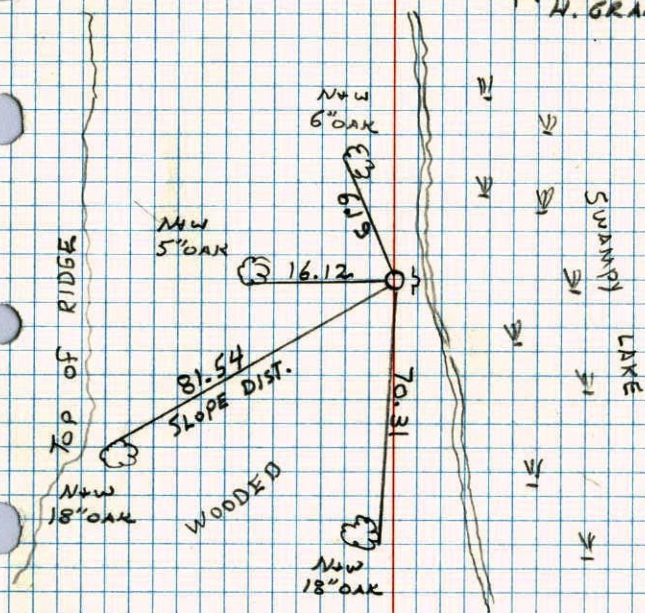
NO. 446

NATIONAL FOREST

HOUSE # 3560
WEST MAIN ST.

CENTER OF SECTION 36 T32 R25

RETIRED. OLD NEWS GROWN OVER

CORNER PROVED OK BY SECTION
WORKSTEEL POST ON EAST
SIDE.*1 63°
9-12-85H. LARSON
H. GRAMS

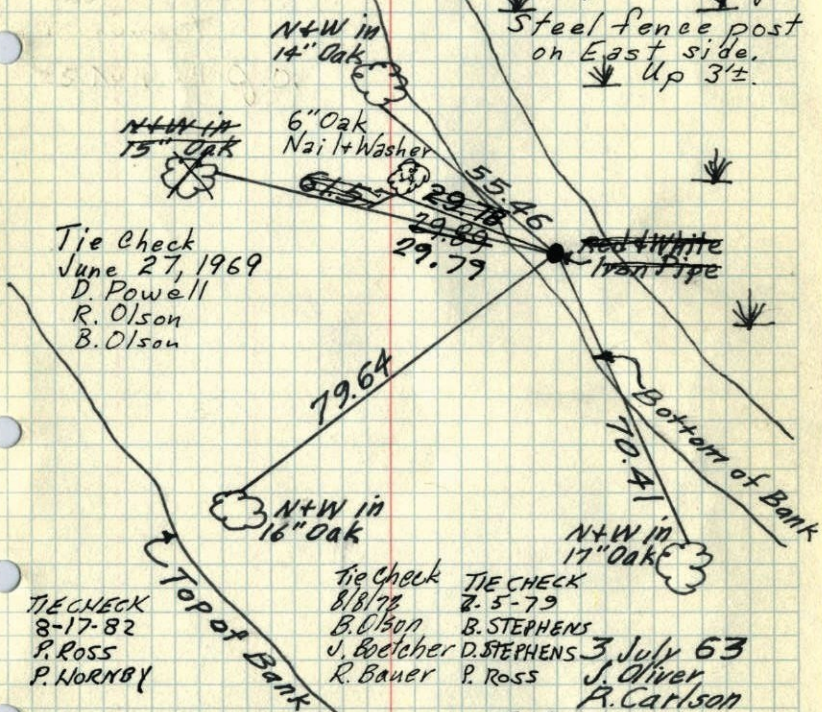
NO. 448

TELEPHONE

Center of Sec. 36, T.32, R.25

Replaced old fence post used as center with 1" X 8.5' iron pipe. Top 3' of pipe left sticking up + painted with alternate 6" red + white bands. This center section does not lie on the intersection of the straight quarter lines, but when used as a corner in County re-monumentation Survey, it proves to be better than other monuments in use at this time.

R.W.A.
Replaced Red + White Iron Pipe with Cast Iron Monument flush. Aug. 25, 1964 J.O.

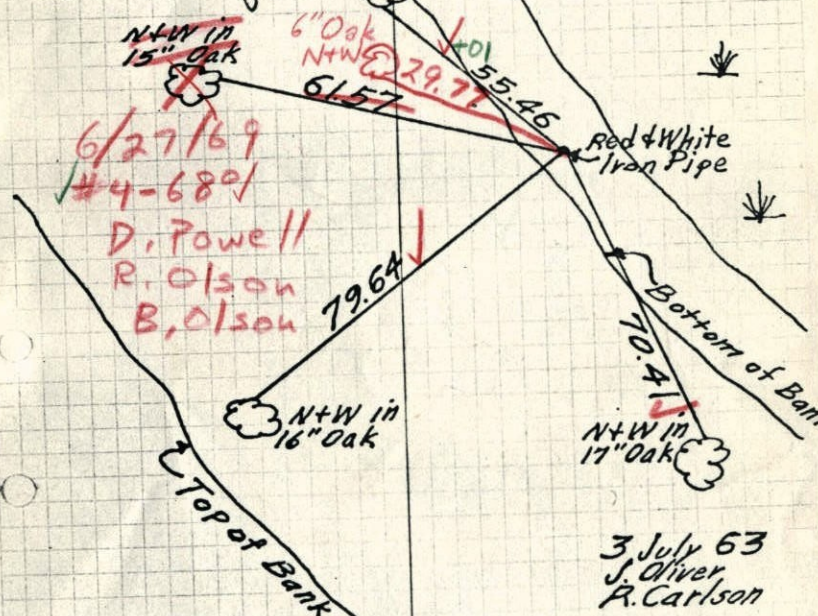


TEMPERATURE CORRECTED
AND HORIZONTALLY
TAPED MEASUREMENTS

ROLAND W. ANDERSON
COUNTY SURVEYOR
ANOKA COUNTY, MINNESOTA

Center of Sec. 36, T.32, R.25
Replaced old fence post used as center with 1" X 8.5' iron pipe. Top 3' of pipe left sticking up + painted with alternate 6" red + white bands. This center section does not lie on the intersection of the straight quarter lines, but when used as a corner in County re-monumentation Survey, it proves to be better than other monuments in use at this time.

R.W.A.
Replaced Red + White I.P. with Cast Iron Monument flush. 25 Aug 64 J.O.



TEMPERATURE CORRECTED
AND HORIZONTALLY
TAPED MEASUREMENTS

ROLAND W. ANDERSON
COUNTY SURVEYOR
ANOKA COUNTY, MINNESOTA

Center of Sec. 36, T32, R24²⁵

Replaced old Fence Post used as Center
with 1" X 8.5' Iron Pipe. Top 3' of Pipe
left sticking up and painted with alternate
6" Red and White Bands. This Center
is incorrect but has been used by too
many surveyors to ignore.

