

CERTIFICATE OF LOCATION OF GOVERNMENT CORNER

County of Anoka State of Minnesota

EAST 1/4 Corner of Sec. 1 Township 32 Range 25

I hereby certify that on the 2ND day of OCTOBER, 19 78, I found the described corner which was evidenced by AREA RESURVEY

and I further certify that to perpetuate the location of said corner, I did, at the exact location thereof, place a permanent marker consisting of 1/2" I.P. IN CONCRETE APRON ON CENTERLINE

which reference or witness monuments are located in the manner following:

N.A.D.	1983	Co-ordinates
County	Project	Co-ordinates
Northing	<u>193518.4714</u>	
Easting	<u>468639.1615</u>	
State Plane Co-ordinates		
Y	_____	
X	_____	
Date	<u>1/04/00</u>	

12" Post
FROM
Washer
Nail & Washer
Top center
Guard Post

C.S.A. H. No. 7
COUNTY RD
(RUM RIVER BLVD. NW)

5-14-10
BK-SH
T/T

NAIL-WASHER
TOP CENTER
GUARD POST 15' FROM BRIDGE

NAIL-WASHER
POWER POLE

N.E. CORNER CONCRETE
POST PUNCH MARK
IN STEEL SLEEVE

N.W. CORNER CONCRETE
POST PUNCH MARK
IN STEEL SLEEVE

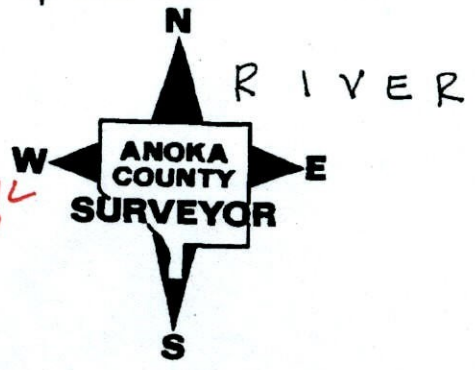
PUNCH MARK ON
TOP HAND RAIL

PUNCH MARK ON
TOP HAND RAIL

RUM

ABOVE 7TH
VERT BEAM
BRIDGE

5TH
VERTICAL
BEAM



Revised date	Revised date	Revised date
10-2-78	9-8-94	
8-18-82	11-2-98	
7-23-85		
7-13-88		
8-6-89		
8-30-90		
8-9-93		

CERTIFICATE OF LOCATION OF GOVERNMENT CORNER

County of Anoka

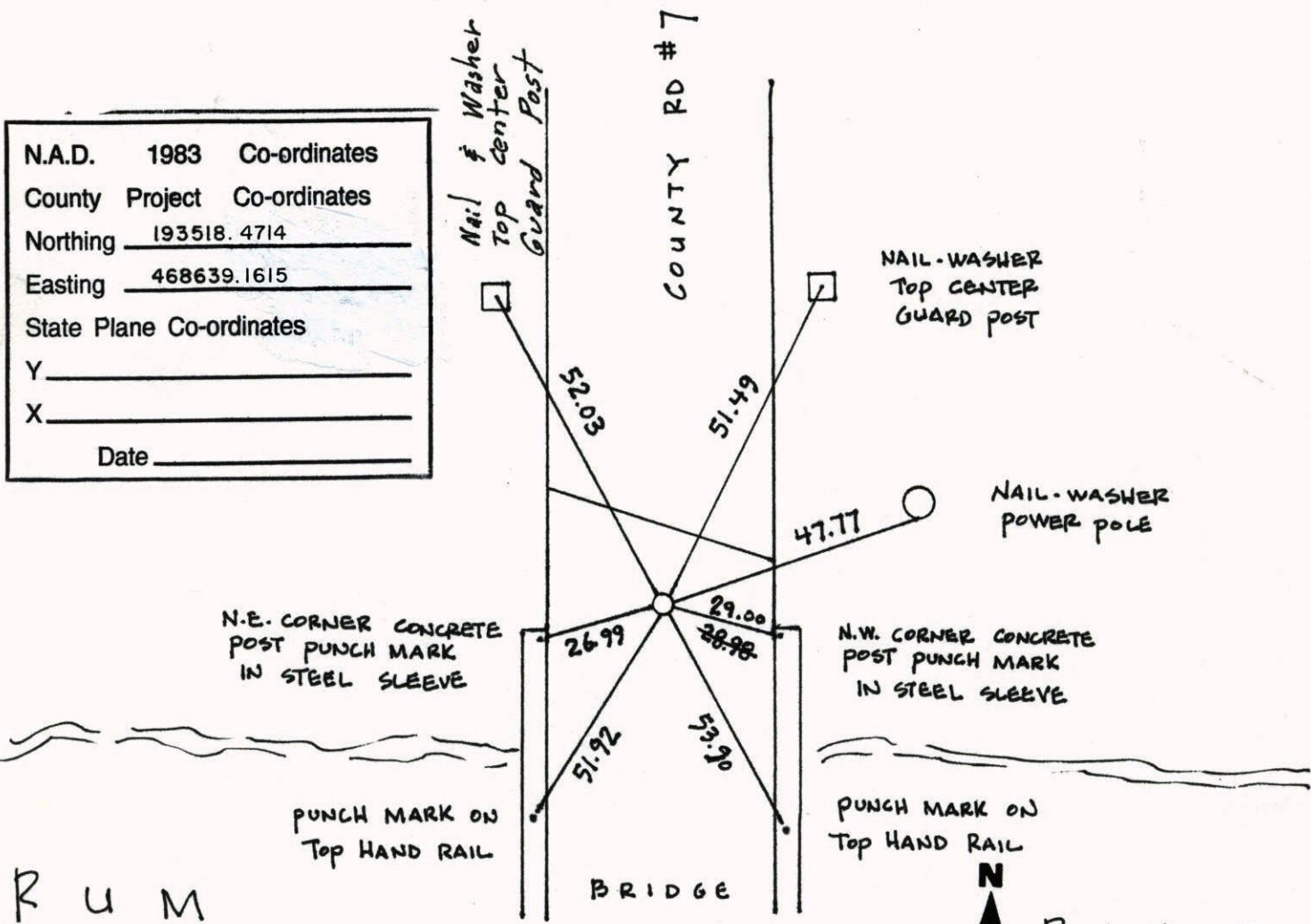
State of Minnesota

EAST 1/4 Corner of Sec. 1 Township 32 Range 25

I hereby certify that on the 2ND day of OCTOBER, 19 78, I found the described corner which was evidenced by AREA RESURVEY

and I further certify that to perpetuate the location of said corner, I did, at the exact location thereof, place a permanent marker consisting of 1/2" I.P. IN CONCRETE APRON

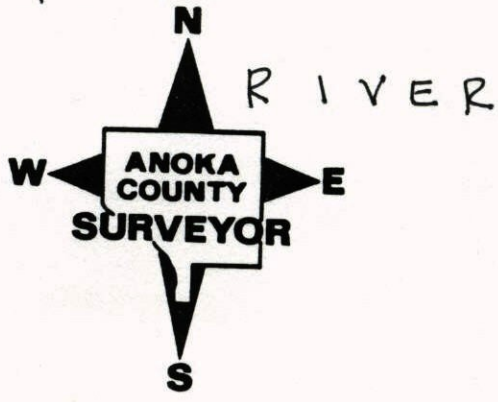
which reference or witness monuments are located in the manner following:



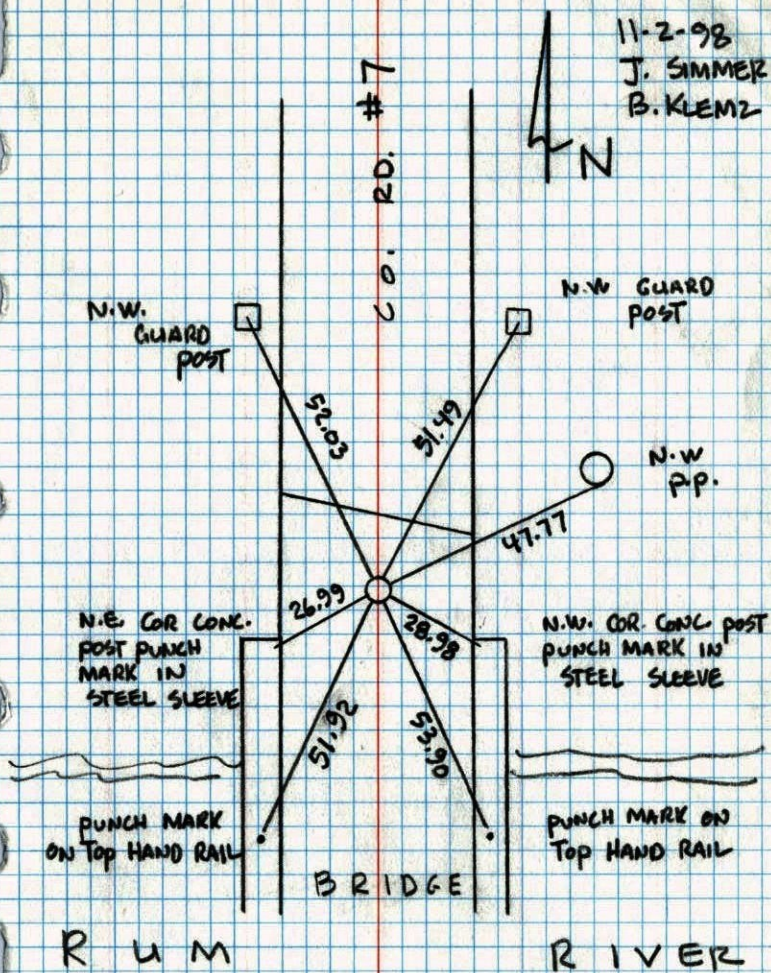
N.A.D.	1983	Co-ordinates
County	Project	Co-ordinates
Northing	<u>193518.4714</u>	
Easting	<u>468639.1615</u>	
State Plane Co-ordinates		
Y	_____	
X	_____	
Date	_____	

R U M

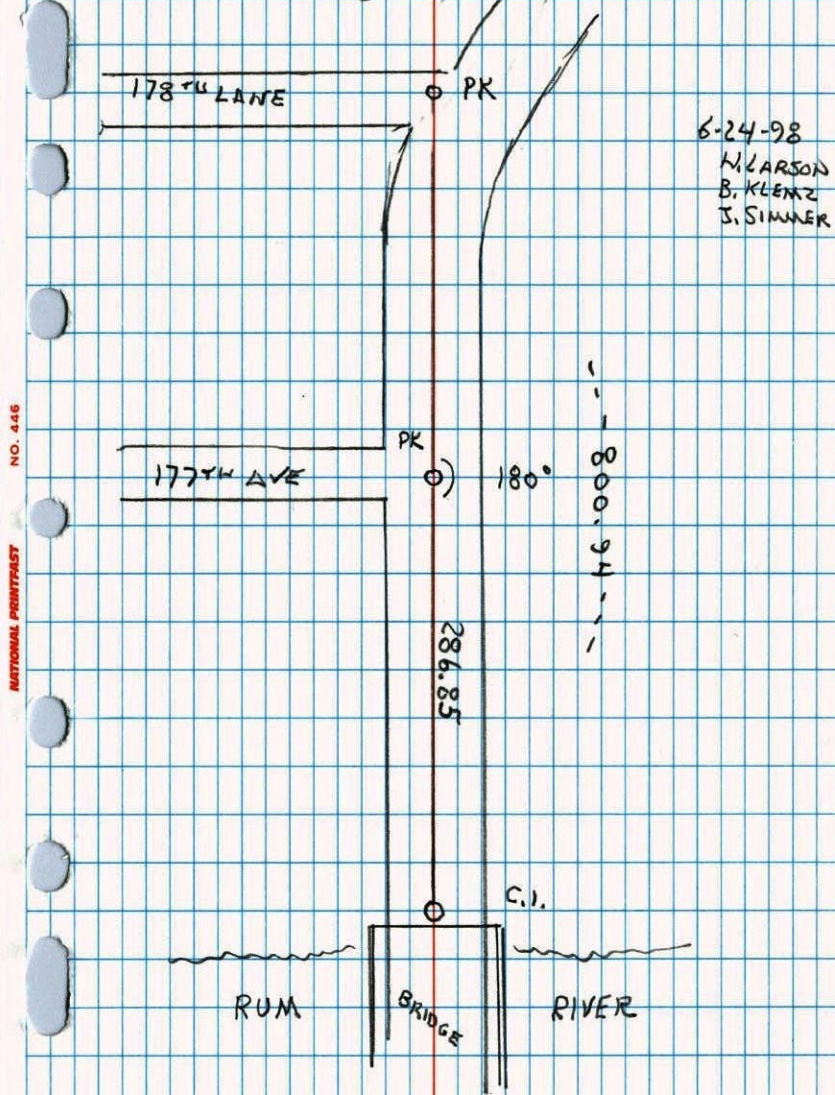
Revised date	Revised date	Revised date
<u>10-2-78</u>	<u>9-8-94</u>	
<u>8-18-82</u>	<u>11-2-98</u>	
<u>7-23-85</u>		
<u>7-13-88</u>		
<u>8-6-89</u>		
<u>8-30-90</u>		
<u>8-9-93</u>		



EAST 1/4 COR SEC 1 T 32 R 25
 RESET & RETIED 1/2" I.P. IN CONC.



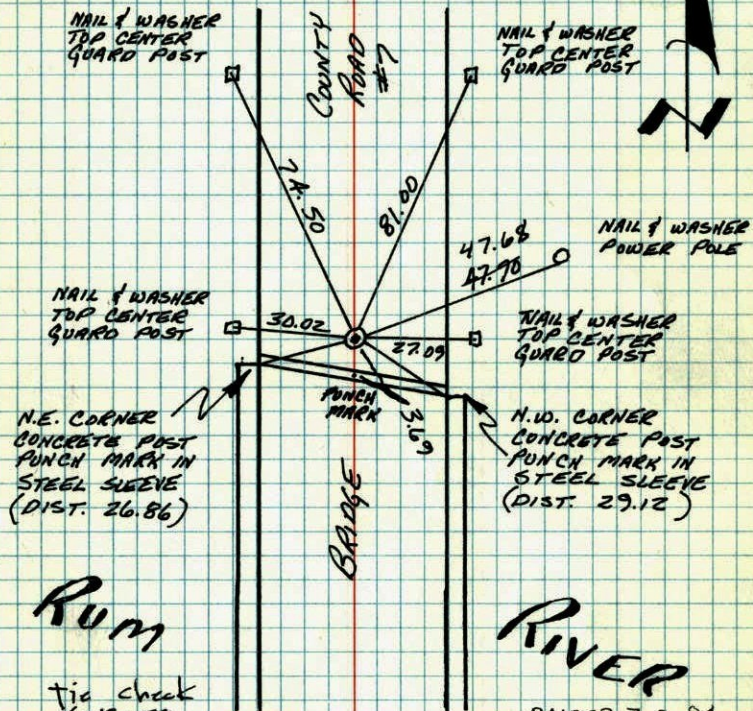
TRANSIT TIE
 EAST 1/4 COR SECTION 1 T32 R25
 TIED & REMOVED FOR CONSTRUCTION



E 1/4 CORNER SECTION 1, T32, R25

RESET CAST IRON MONUMENT IN PLACE OF
P.K. NAIL SET BY M. D. ANDERSON. CAST IRON
FLUSH ON CENTERLINE. P.K.'S 2.00' NORTH
AND EAST.

2 OCT 78
H. LARSON
B. GUETZKO
D. NAJLAK



tie check
6-15-79

B Stephens
D Stephens
P Ross

TIE CHECK
8-18-82
P. ROSS
P. HORNBY

RAISED 7-3-84
G. LIPS
D. ROSS
R. BENNETT

TEMPERATURE CORRECTED
AND HORIZONTALLY
TAPED MEASUREMENTS

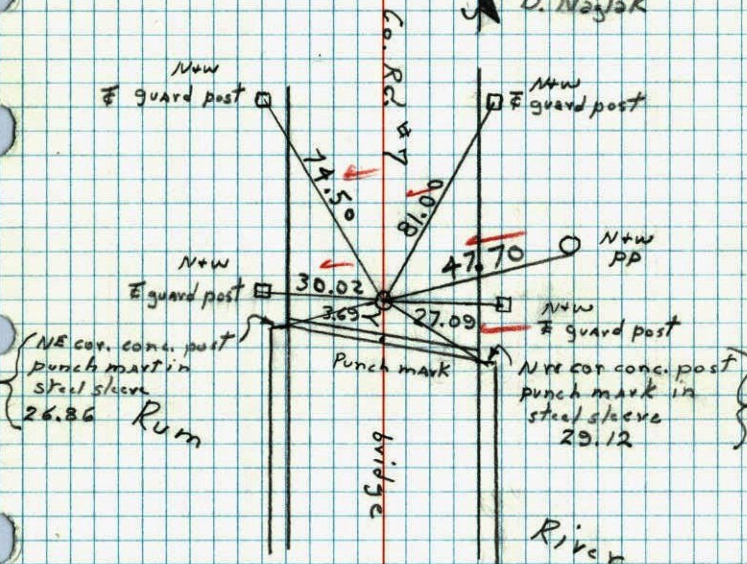
ROLAND W. ANDERSON
COUNTY SURVEYOR
ANOKA COUNTY, MINNESOTA

E 1/4 Cor. Section 1 T32 R25

Reset cast iron monument in
place of P.K. set by M.D. Anderson

C.I. Flush on E.
PKs 2.00' North & east.

81 75°
10-2-78
H. Larson
B. Guetzko
D. Najlak

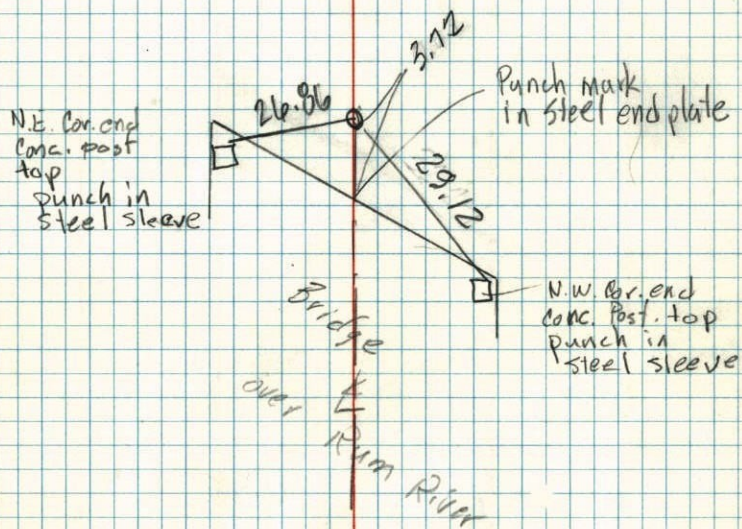


1/4 Cor. Sec. 1-T 32-R 25

Replaced Cast Iron Mon. after const.
with P.K. nail until Road Const. is
finished



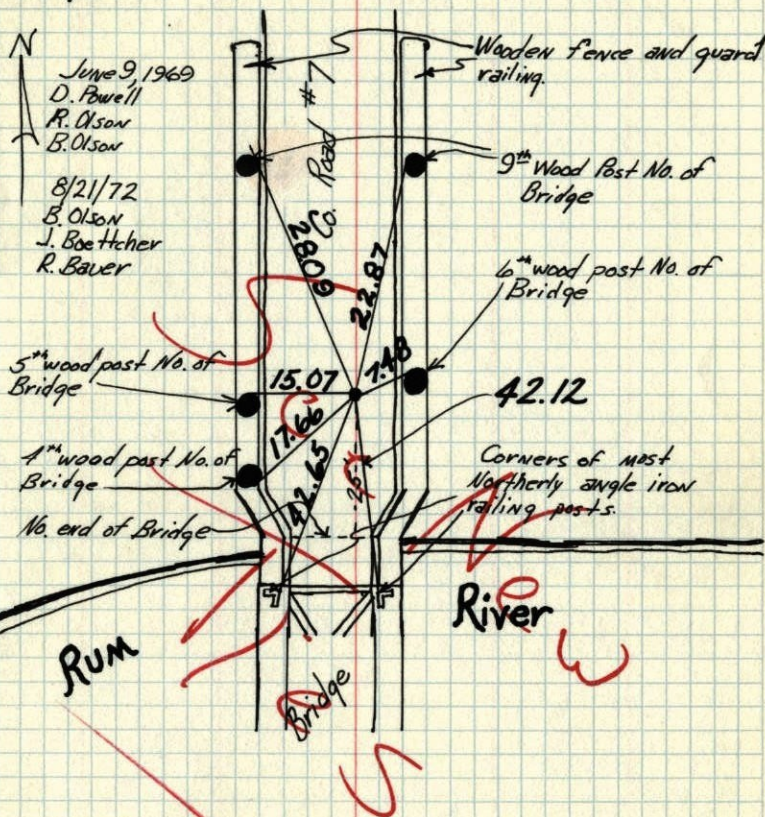
6/22/77
Temp. 67.50
Tape # 17
M. D. Anderson
P. W. Bertelson
M. J. Anne



21

E 1/4 Corner Sec. 1-T. 32-R. 25

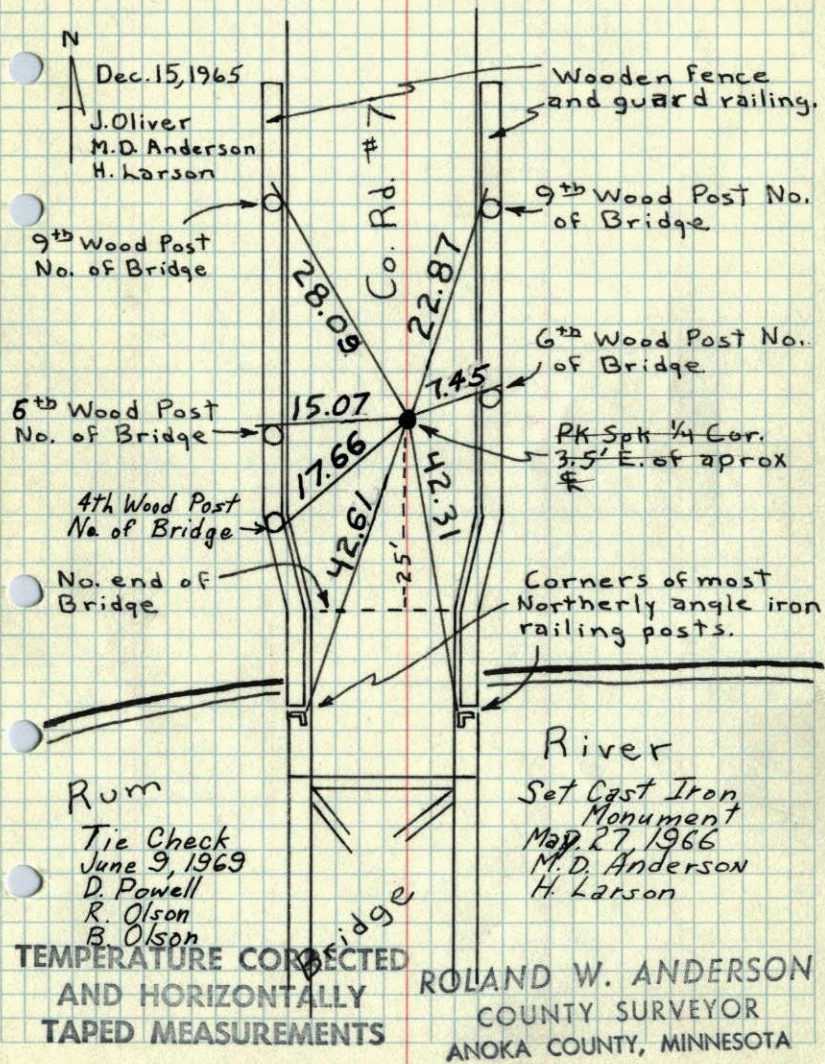
Set P.K. Spike From Resurvey. Set P.K. Spks.
2.00' North and East. Nails and Washers in all
tie posts.



TEMPERATURE CORRECTED
AND HORIZONTALLY
TAPED MEASUREMENTS
ROLAND W. ANDERSON
COUNTY SURVEYOR
ANOKA COUNTY, MINNESOTA

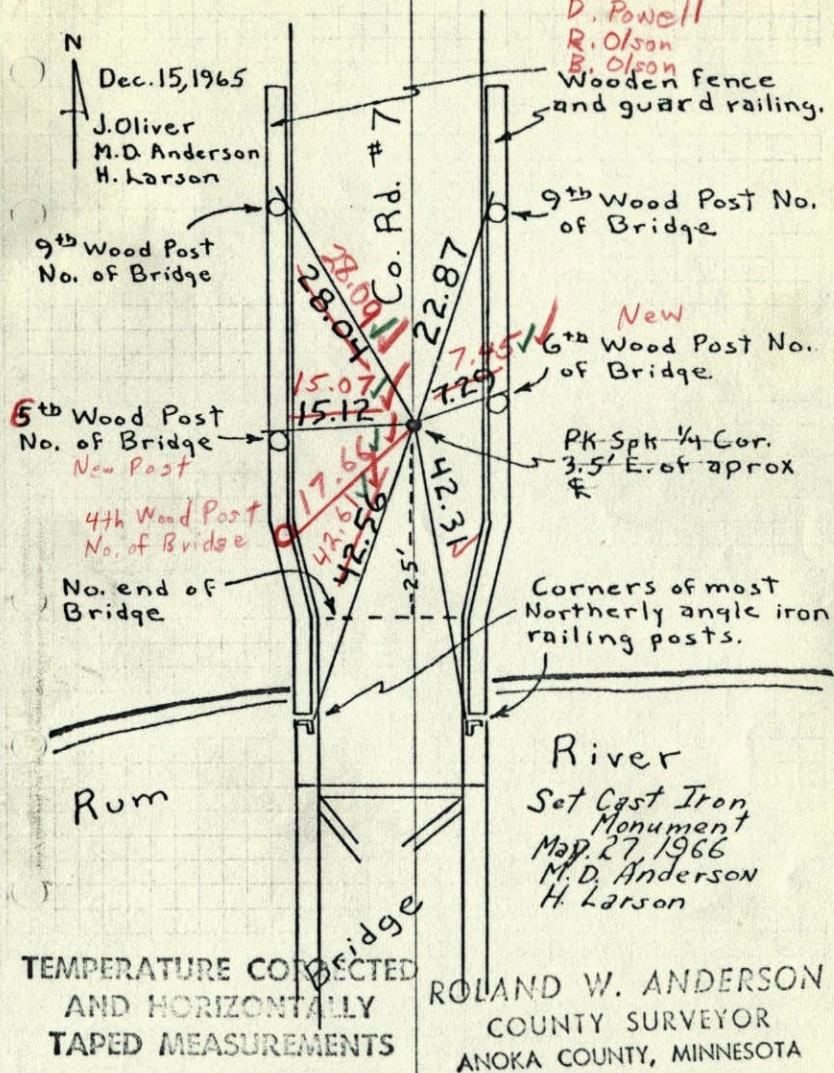
E 1/4 Cor. Sec. 1, T32, R25

Set PK Spike from Resurvey. Set PK Spks
2.00' North and East. Nails and washers
in all tie posts.



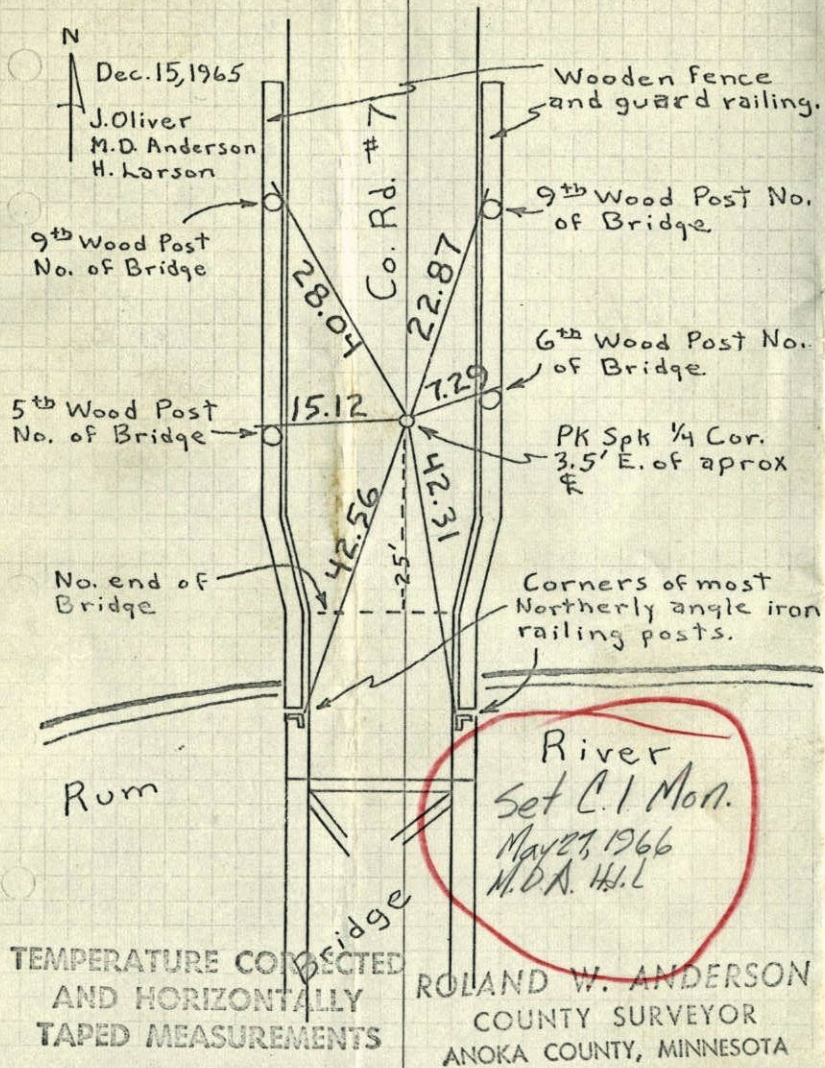
E 1/4 Cor. Sec. 1, T32, R25

Set PK Spike from Resurvey. Set PK Spks
2.00' North and East. Nails and washers
in all tie posts.



E 1/4 Cor. Sec. 1, T32, R25

Set PK Spike from Resurvey. Set PK Spks
2.00' North and East to Nails and washers
in all tie posts.



E 1/4 Cor. Sec. 1, T32, R25

Set PK Spk from Resurvey. Set PK Spks
2.00' North and East. Nails and washers
in tie posts, posts and rails.

