

CERTIFICATE OF LOCATION OF GOVERNMENT CORNER

County of Anoka

State of Minnesota

SOUTHWEST Corner of Sec. 10 Township 32 Range 25

I hereby certify that on the 10TH day of JULY, 1961, I found the described corner which was evidenced by SET BY DOUBLING THE DISTANCE FROM WEST 1/4 THROUGH THE 1/16TH CORNER

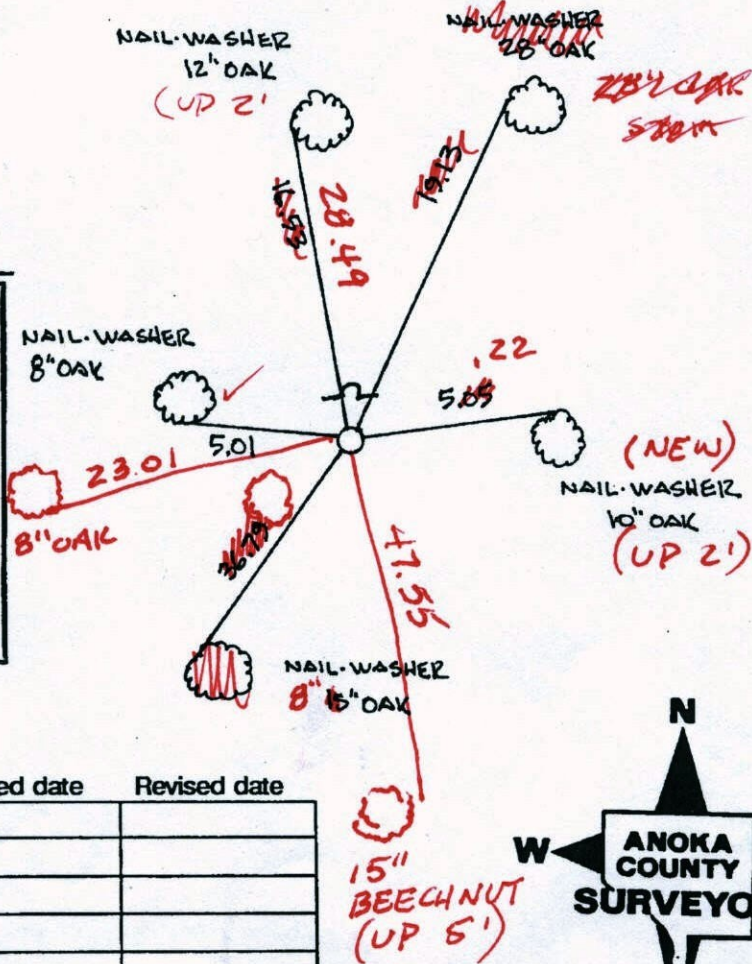
and I further certify that to perpetuate the location of said corner, I did, at the exact location thereof, place a permanent marker consisting of CAST IRON MONUMENT SIGN AND POST ON NORTH SIDE (-UP +10)

which reference or witness monuments are located in the manner following:

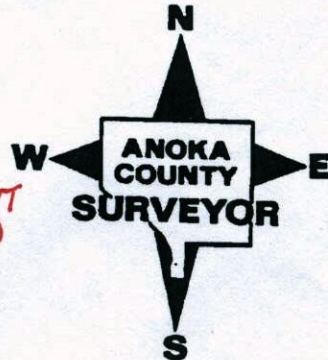


BK-SH
5-26-10
TAPED

N.A.D.	1983	Co-ordinates
County	Project	Co-ordinates
Northing	185668.1151	
Easting	452840.4888	
State Plane Co-ordinates		
Y		
X		
Date	3/01/00	



Revised date	Revised date	Revised date
8 20 82		
12 12 83		
7 30 85		
7 6 88		
8 13 93		
3 1 00		



CERTIFICATE OF LOCATION OF GOVERNMENT CORNER

County of Anoka

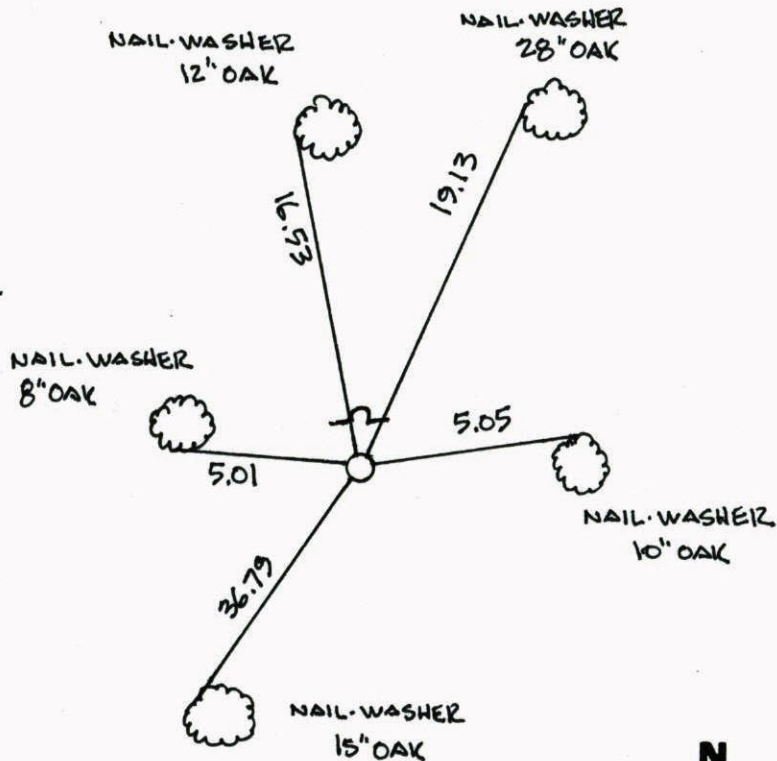
State of Minnesota

SOUTHWEST Corner of Sec. 10 Township 32 Range 25

I hereby certify that on the 10TH day of JULY, 1961, I found the described corner which was evidenced by SET BY DOUBLING THE DISTANCE FROM WEST 1/4 THROUGH THE 1/16TH CORNER

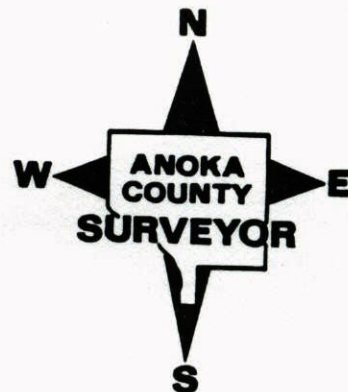
and I further certify that to perpetuate the location of said corner, I did, at the exact location thereof, place a permanent marker consisting of CAST IRON MONUMENT SIGN AND POST ON NORTH SIDE

which reference or witness monuments are located in the manner following:

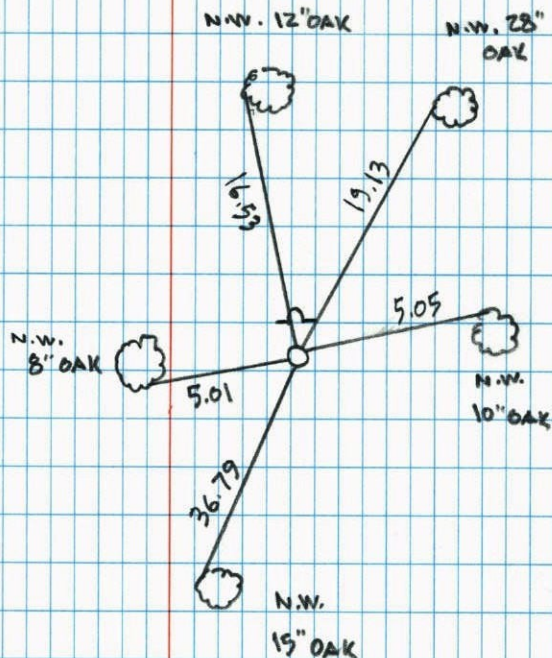
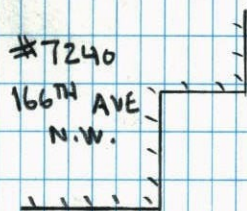


N.A.D.	1983	Co-ordinates
County	Project	Co-ordinates
Northing	<u>185668.1151</u>	
Easting	<u>452840.4888</u>	
State Plane Co-ordinates		
Y	_____	
X	_____	
Date	_____	

Revised date	Revised date	Revised date
8 20 82		
12 12 83		
7 30 85		
7 6 88		
8 13 93		
3 1 00		



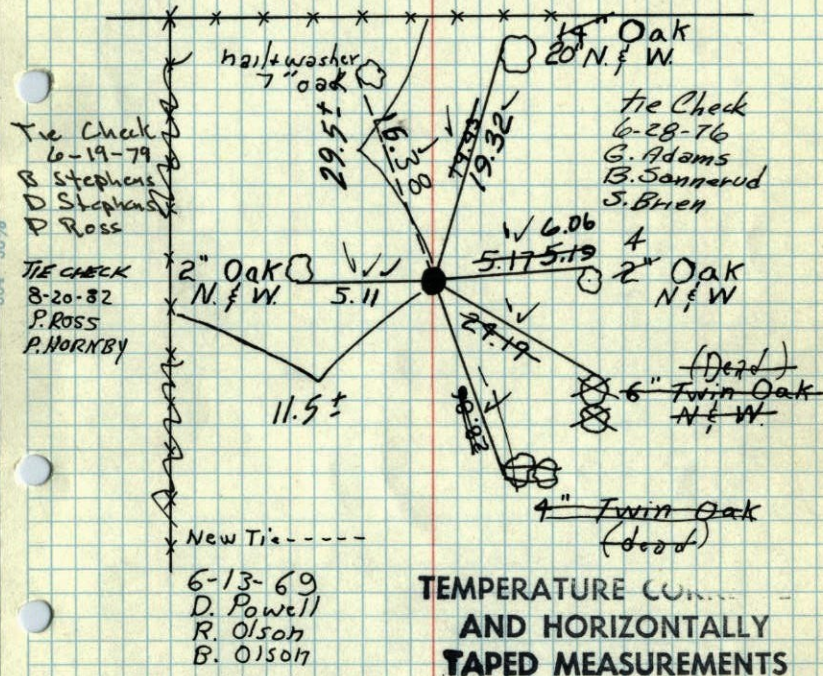
SOUTHWEST COR. SEC 10 T 32 R. 25

GPS & RETED CAST IRON MONUMENT
WITH SIGN & POST ON NORTH SIDE

3-1-00

J. SIMMER

T. SCHWAB

July 10, 1961⁵³
Freeman, Anderson
+75° CarlsonS.W. Corner Sec 10, T-32, R-25
RamseySet spike by doubling distance
from W¹/₄ Corner through ¹/₁₆ Corner
Set Cast Iron Monument up 0.3'TEMPERATURE CORRECTED
AND HORIZONTALLY
TAPED MEASUREMENTSTie Check
July 19, 1972
B. Olson
J. Boettcher, D. Brien

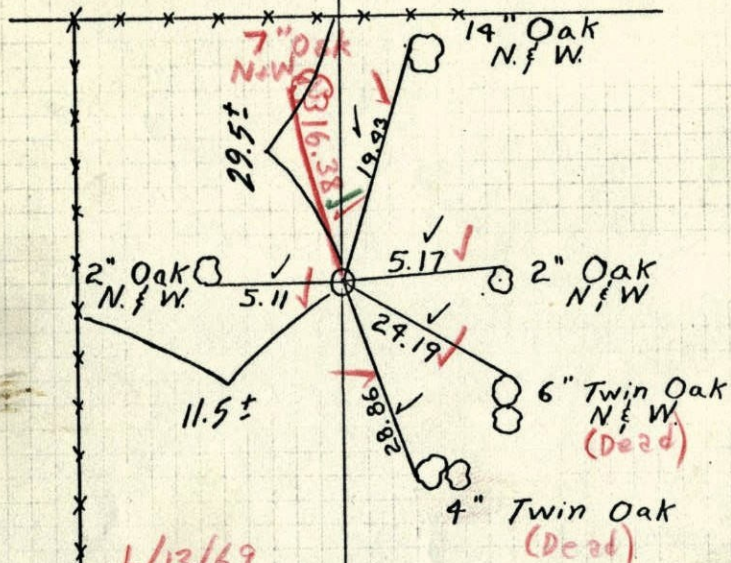
Retie 8/3/64

M. D. Anderson
R. CarlsonROLAND W. ANDERSON
COUNTY SURVEYOR
ANOKA COUNTY, MINNESOTA

July 10, 1961
Freeman, Anderson
+75° Carlson

S.W. Corner Sec 10, T-32, R-25
Ramsey

Set spike by doubling distance
from W 1/4 Corner through 1/16 Corner
Set Cast Iron Monument up 0.3'



6/13/69
+76-85°
D. Powell
R. Olson
B. Olson

TEMPERATURE CORRECTED
AND HORIZONTALLY
TAPED MEASUREMENTS

ROLAND W. ANDERSON
COUNTY SURVEYOR
ANOKA COUNTY, MINNESOTA

Retie 8/3/64
M. D. Anderson
R. Carlson

entered
AR

No. Temp.

10 July 1961
Freeman Anderson
Carlson

Sw Cor Sec 10-32-25 Ramsey
Set Spike by doubling dist from W 1/4 Cor
thro 1/16 Cor. Set Cast Iron Mon.

