

# CERTIFICATE OF LOCATION OF GOVERNMENT CORNER

County of Anoka

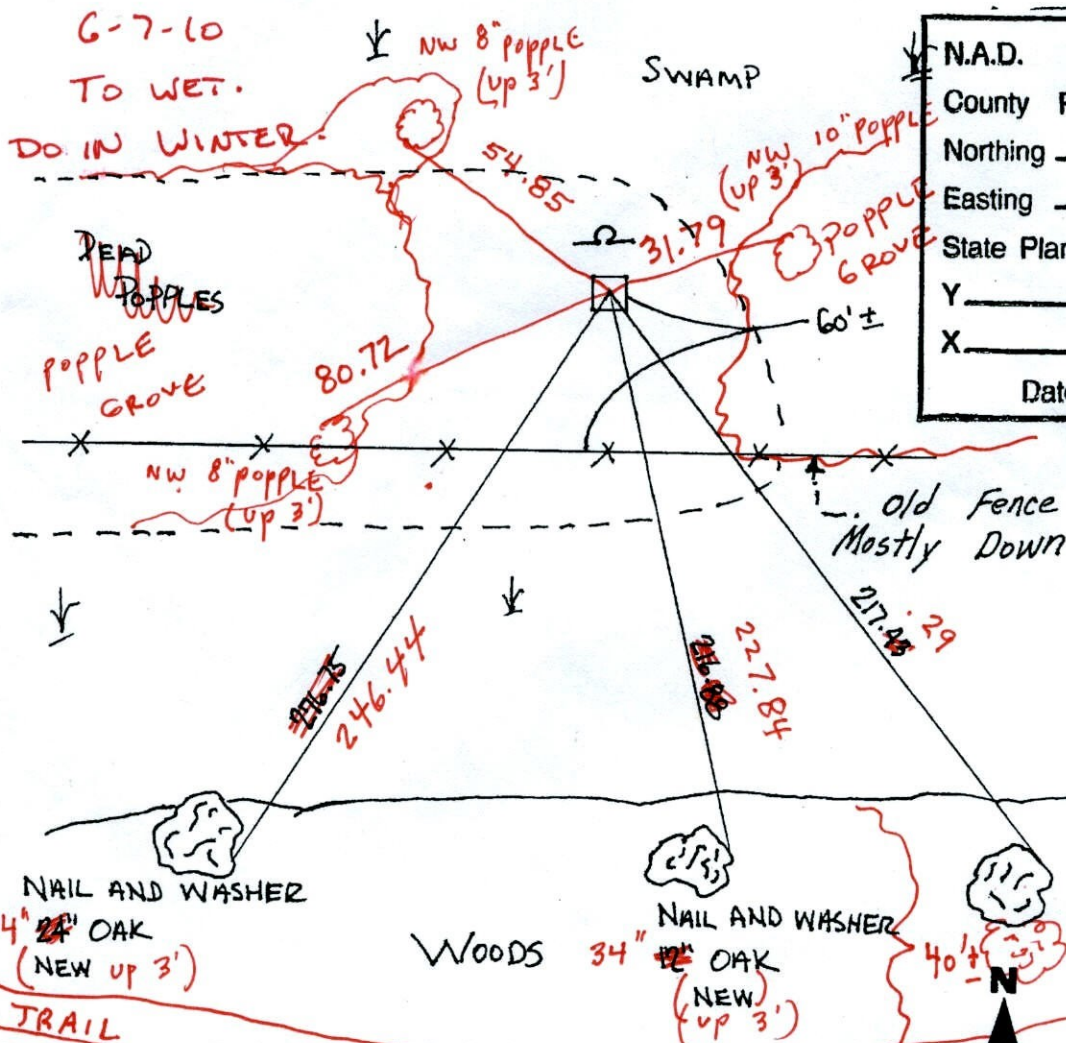
State of Minnesota

NORTHEAST Corner of Sec. 18 Township 32 Range 25

I hereby certify that on the 1<sup>ST</sup> day of OCTOBER, 19 63, I found the described corner which was evidenced by CONCRETE MONUMENT

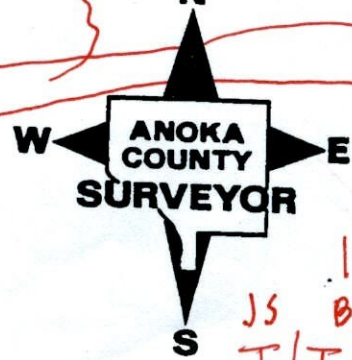
and I further certify that to perpetuate the location of said corner, I did, at the exact location thereof, place a permanent marker consisting of CONCRETE MONUMENT WITH 7' SIGN AND POST ON THE NORTH SIDE

which reference or witness monuments are located in the manner following:



N.A.D.	1983	Co-ordinates
County Project	Co-ordinates	
Northing	<u>185789.1291</u>	
Easting	<u>442240.6491</u>	
State Plane Co-ordinates		
Y	_____	
X	_____	
Date	<u>1/28/00</u>	

Revised date	Revised date	Revised date
8-12-82		
6-13-88		
8-12-93		
1-28-00		



1-7-11  
JS BK SS.  
T/T

# CERTIFICATE OF LOCATION OF GOVERNMENT CORNER

County of Anoka

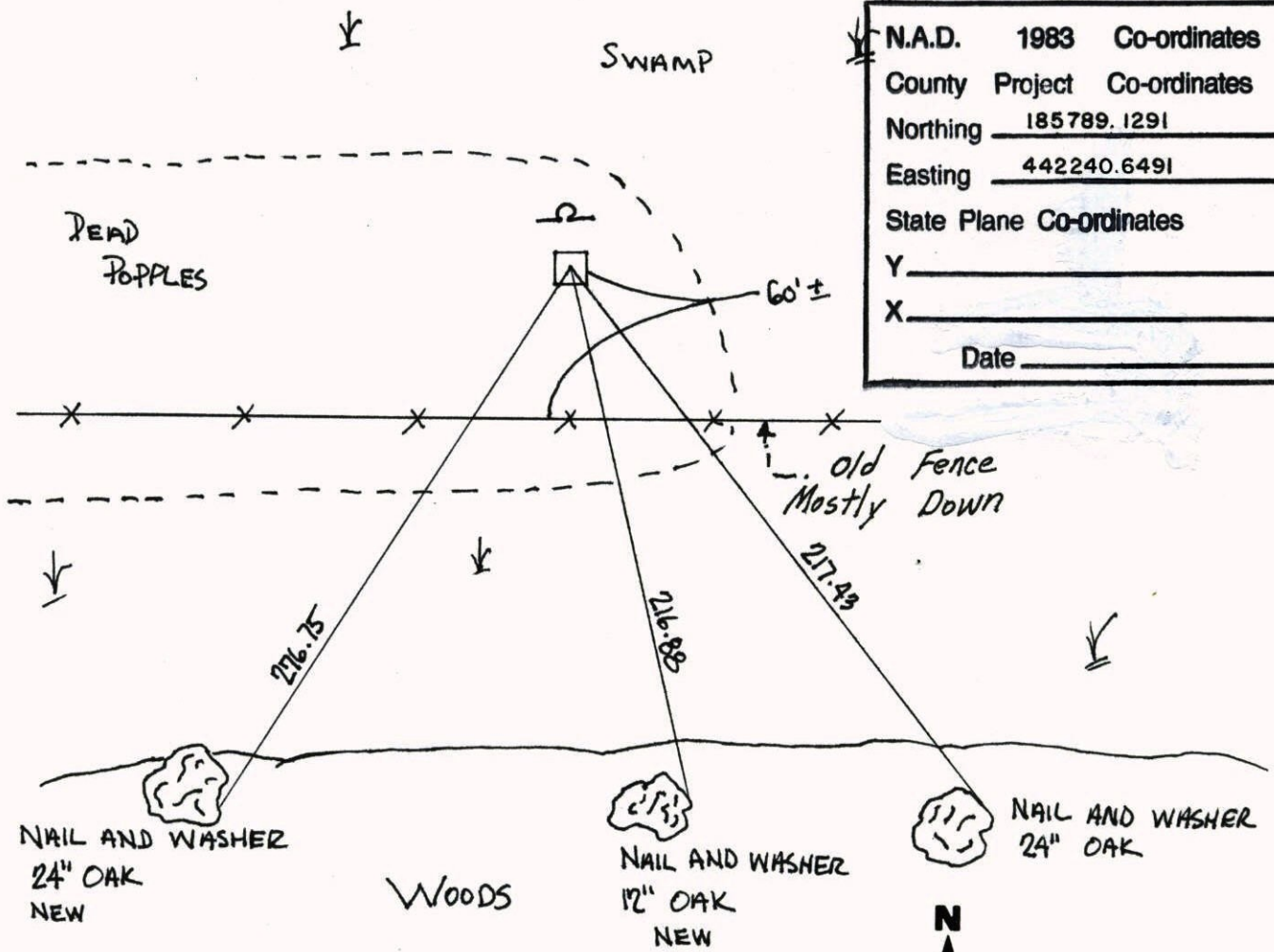
State of Minnesota

NORTHEAST Corner of Sec. 18 Township 32 Range 25

I hereby certify that on the 1<sup>ST</sup> day of OCTOBER, 19 63, I found the described corner which was evidenced by CONCRETE MONUMENT

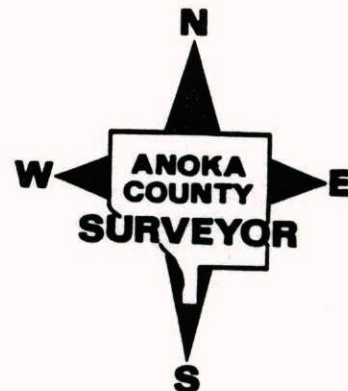
and I further certify that to perpetuate the location of said corner, I did, at the exact location thereof, place a permanent marker consisting of CONCRETE MONUMENT WITH 7' SIGN AND POST  
ON THE NORTH SIDE

which reference or witness monuments are located in the manner following:



N.A.D.	1983	Co-ordinates
County	Project	Co-ordinates
Northing		<u>185789.1291</u>
Easting		<u>442240.6491</u>
State Plane Co-ordinates		
Y		_____
X		_____
Date _____		

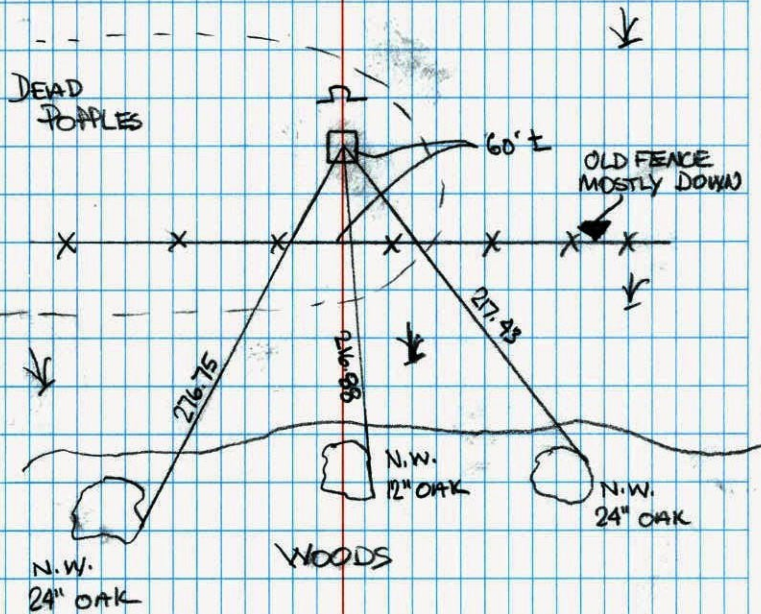
Revised date	Revised date	Revised date
8-12-82		
6-13-88		
8-12-93		
1-28-00		



NORTHEAST COR. SEC. 18, T. 32, R. 25

RETIED MONUMENT DURING GPS.

SWAMP

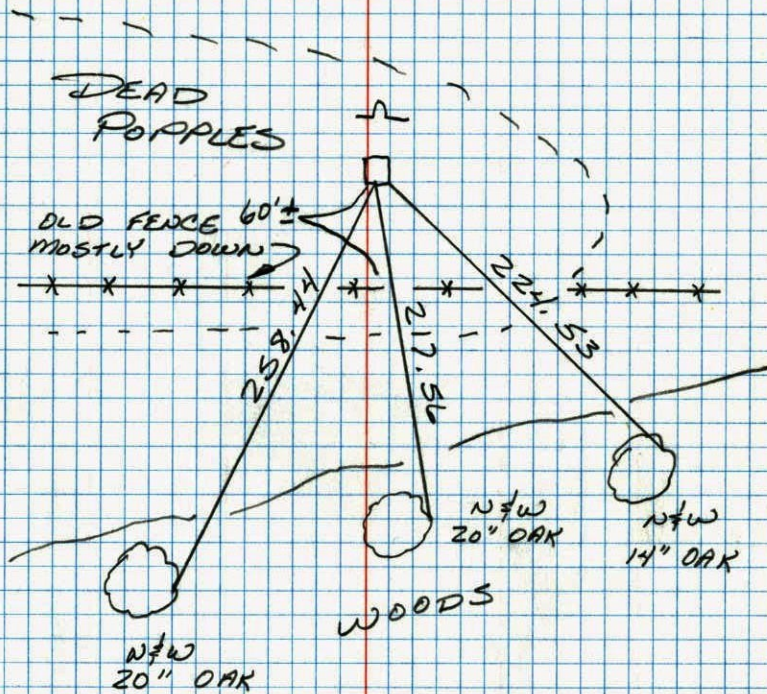


1-28-00  
 J. SIMMER  
 T. SCHWAB

NE COR SEC 18 T32 R25

RETIED CONCRETE MONUMENT.

PLACED 7' SIGN &amp; POST ON NORTH SIDE.



6-13-88  
 B. GUETZKO  
 A. SHROYER  
 M. NAJI-H  
 90° 200' TAPE

NE Cor Sec. 18, T32, R25

Found 4" Sq. Concrete Monument Sticking up

0.4' Angle Iron F.P. on SW side of Conc. sticks

up 2'.



Retie 8/7/64  
M.D. Anderson  
R. Carlson

New Ties -----  
6-16-69  
D. Powell  
R. Olson  
B. Olson

Tie Check  
8/2/72  
B. Olson  
J. Boetcher  
K. Bauer  
all ties O.K.

1 Oct. 63

J. Oliver  
E. Madson

Nail and washer  
in 3" poplar  
willow

Concrete Monument

Nail and washer  
in 2" Poplar

Nail and washer  
in 3" Poplar  
(New)

TIE CHECK  
8-12-82  
P. ROSS  
P. HORNBY

Nail and  
Washer in  
10" Oak, "X"  
in face.

Nail and Washer  
in 12" Oak, "X"  
in face

Tie Check  
6-20-79  
B. Stephens  
D. Stephens  
P. Ross

Nail and Washer  
in 10" Oak, "X" in

150' Aprux.  
to Edge of  
Woods

TEMPERATURE CORRECTED  
AND HORIZONTALLY  
TAPED MEASUREMENTS

ROLAND W. ANDERSON  
COUNTY SURVEYOR  
ANOKA COUNTY, MINNESOTA

NE Cor Sec. 18, T32, R25

Found 4" Sq. Concrete Monument Sticking up

0.4' Angle Iron F.P. on SW side of Conc. sticks

up 2'.



Retie 8/7/64  
M.D. Anderson  
R. Carlson

6/16/69  
#6 - 70°  
D. Powell  
R. Olson  
B. Olson

1 Oct. 63

J. Oliver  
E. Madson

3" Mult  
Willow  
N+W

Nail and washer  
in 2" Poplar

New  
Nail and Washer  
in 3" Poplar  
5"

Concrete Monument

Nail and washer  
in 3" Poplar

4" Poplar  
N+W

Nail and  
Washer in  
10" Oak, "X"  
in face.

Nail and Washer  
in 12" Oak, "X"  
in face

Nail and Washer  
in 10" Oak, "X" in

150' Aprux.  
to Edge of  
Woods

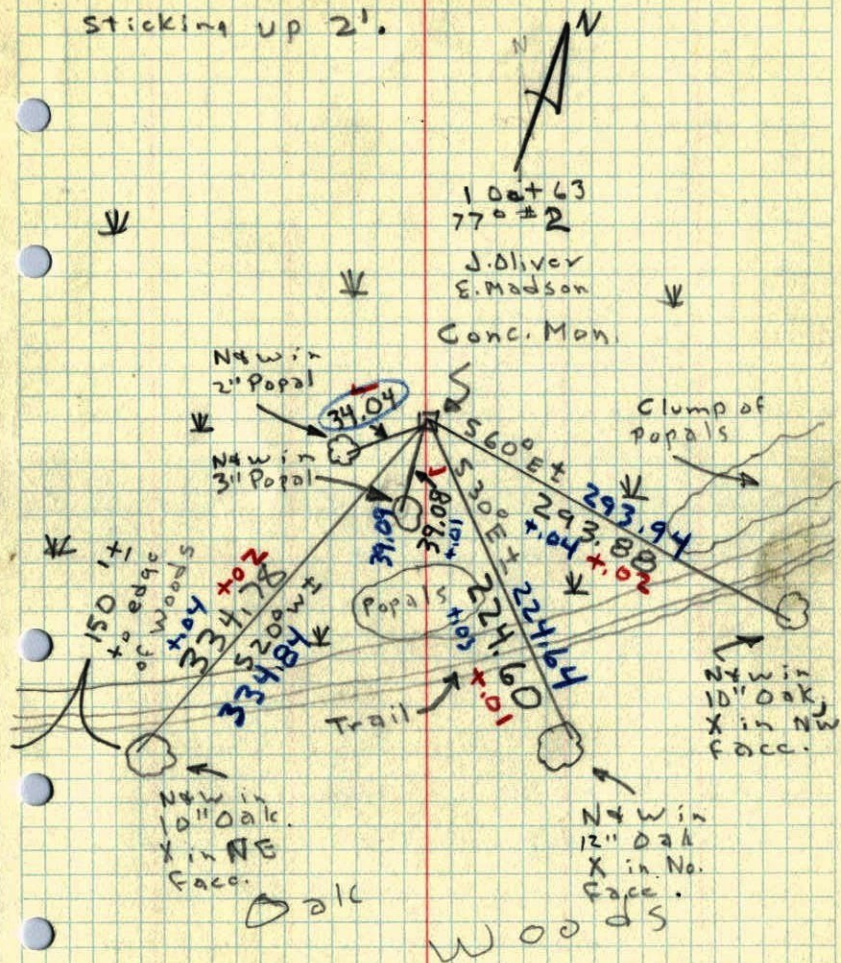
TEMPERATURE CORRECTED  
AND HORIZONTALLY  
TAPED MEASUREMENTS

ROLAND W. ANDERSON  
COUNTY SURVEYOR  
ANOKA COUNTY, MINNESOTA

entered  
H.

NE Cor Sec. 18, T32, R25

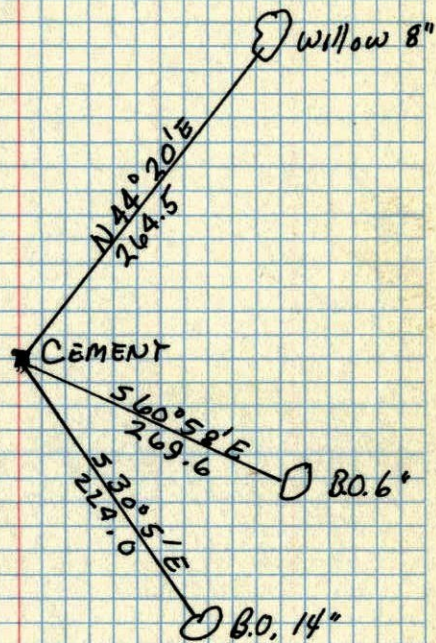
Found 4" Sq. Conc. Man. Sticking up  
0.4'. Angle Iron F.P. on SW side  
sticking up 2'.



31

N.E. CORNER OF SEC. 18, T32, R25 ✓

CONCRETE SET FLUSH



Nov. 4, 1943  
Cartwright