

# CERTIFICATE OF LOCATION OF GOVERNMENT CORNER

County of Anoka

State of Minnesota

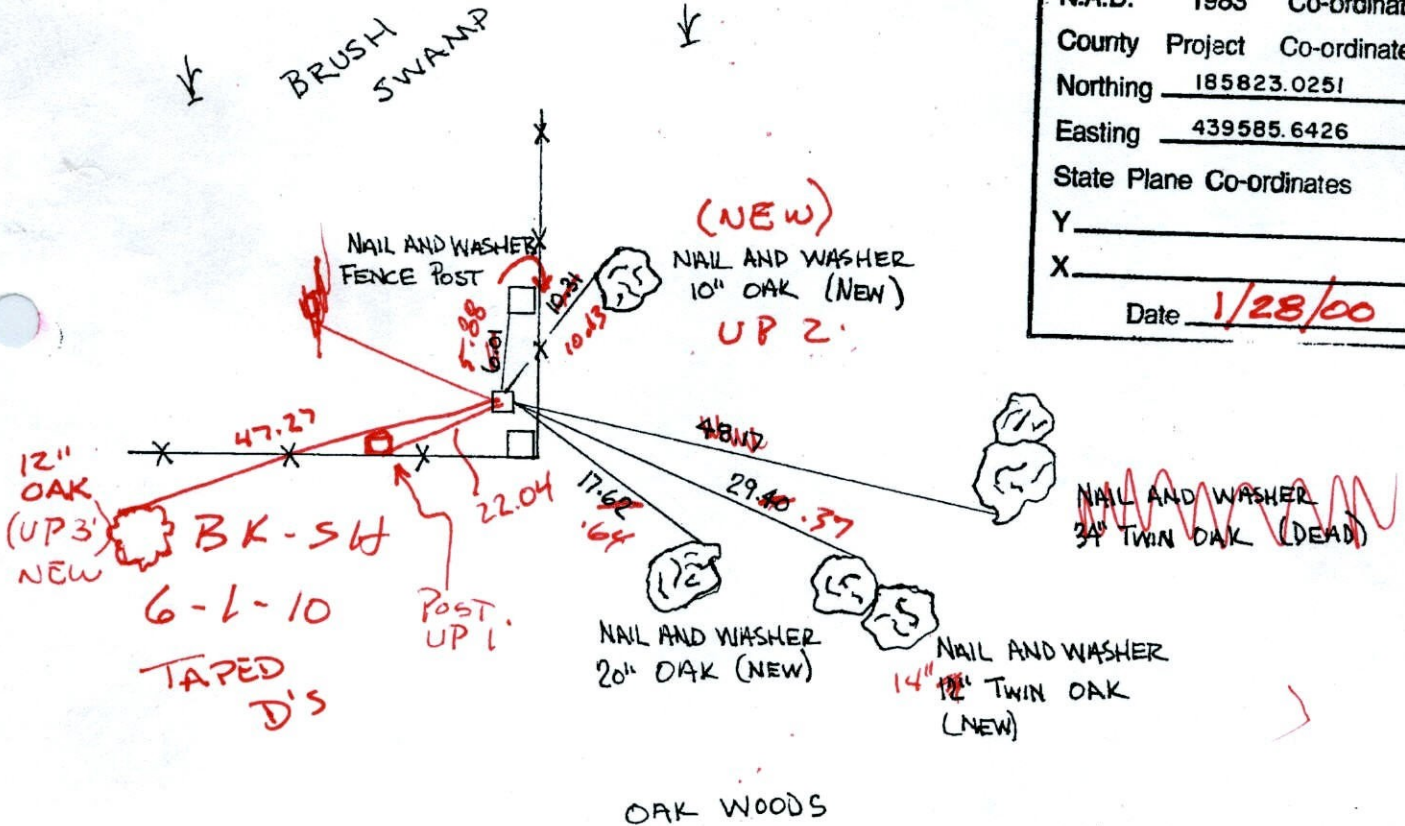
NORTH 1/4 Corner of Sec. 18 Township 32 Range 25

I hereby certify that on the 1<sup>ST</sup> day of OCTOBER, 19 63, I found the described corner which was evidenced by CONCRETE MONUMENT

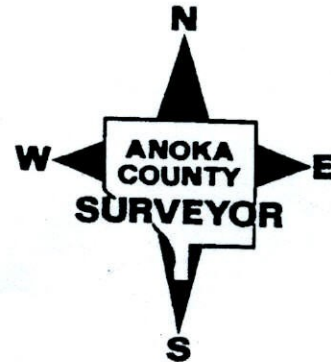
and I further certify that to perpetuate the location of said corner, I did, at the exact location thereof, place a permanent marker consisting of CONCRETE MONUMENT 0.5'± NORTH OF FENCE CORNER (PINCH UP N SIDES)

which reference or witness monuments are located in the manner following:

N.A.D.	1983	Co-ordinates
County	Project	Co-ordinates
Northing		<u>185823.0251</u>
Easting		<u>439585.6426</u>
State Plane Co-ordinates		
Y _____		
X _____		
Date		<u>1/28/00</u>



Revised date	Revised date	Revised date
8-11-82		
7-31-85		
6-15-88		
8-23-93		
1-28-00		



# CERTIFICATE OF LOCATION OF GOVERNMENT CORNER

County of Anoka

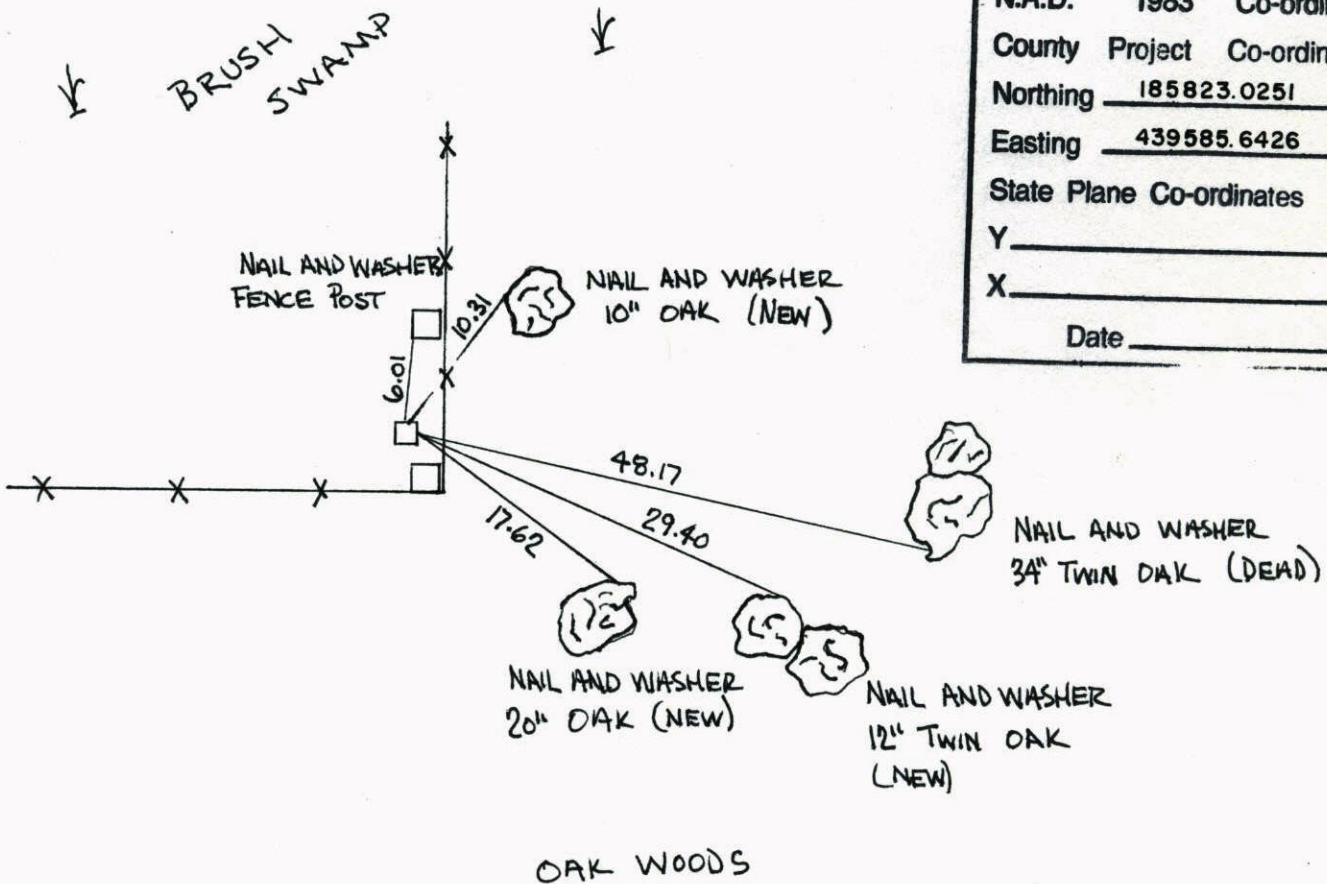
State of Minnesota

NORTH 1/4 Corner of Sec. 18 Township 32 Range 25

I hereby certify that on the 1<sup>ST</sup> day of OCTOBER, 19 63, I found the described corner which was evidenced by CONCRETE MONUMENT

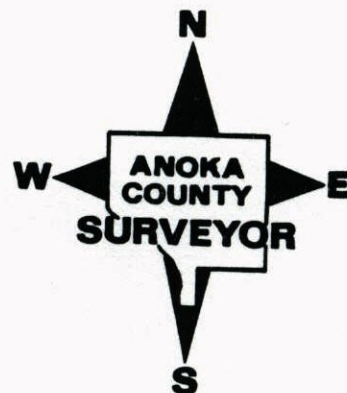
and I further certify that to perpetuate the location of said corner, I did, at the exact location thereof, place a permanent marker consisting of CONCRETE MONUMENT 0.5'± NORTH OF FENCE CORNER

which reference or witness monuments are located in the manner following:



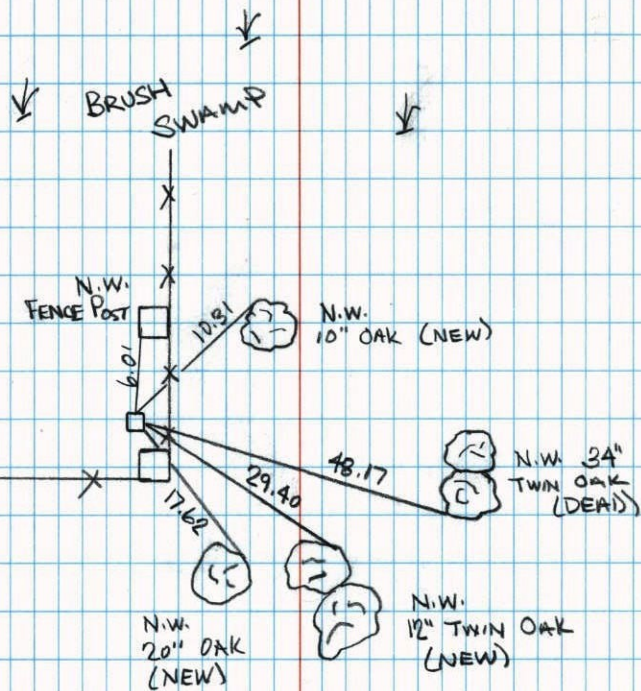
N.A.D.	1983	Co-ordinates
County	Project	Co-ordinates
Northing		<u>185823.0251</u>
Easting		<u>439585.6426</u>
State Plane Co-ordinates		
Y		_____
X		_____
Date _____		

Revised date	Revised date	Revised date
8-11-82		
7-31-85		
6-15-88		
8-23-93		
1-28-00		



NORTH 1/4 COR. SEC. 18 T. 32 R. 25

RETIED MON. DURING GPS.



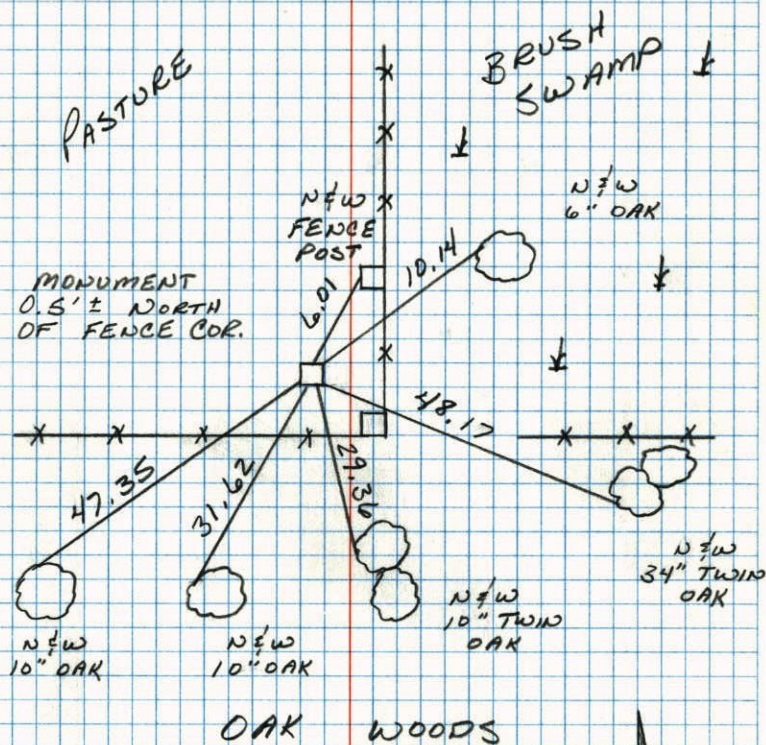
1-28-00

J. SIMMER

T. SCHWAB

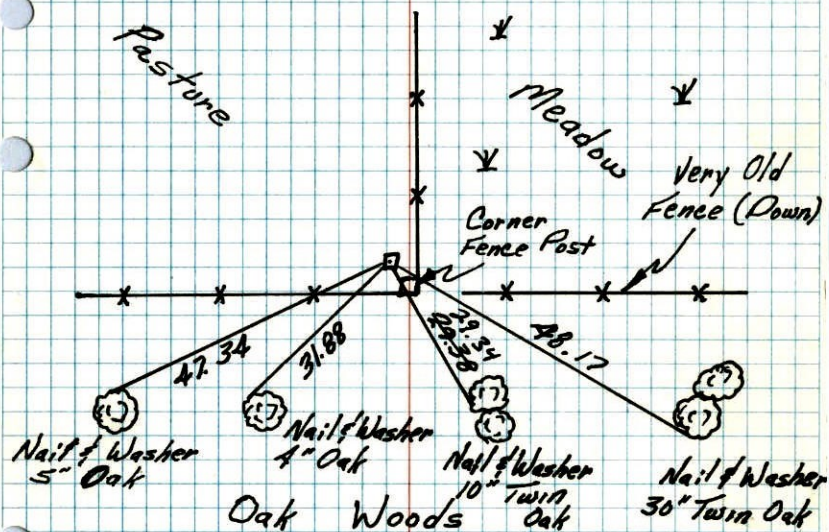
N 1/4 COR SEC 18 T 32 R 25

RETIED CONCRETE MONUMENT

6-15-88  
B. GUETZKO  
A. SHROVER  
M. WALKER  
68' ZOO TAPE

N $\frac{1}{4}$  Cor. Sec. 18 T.32 R.25

Retied 4" Square Concrete Monument.  
Monument Flush And On North Side Of  
Corner Railroad Tie Fence Post.



10-15-76  
H. Larson  
R. Guetzko  
J. Goettcher

Tie Check  
6-20-79  
Stephens  
Stephens  
Ross

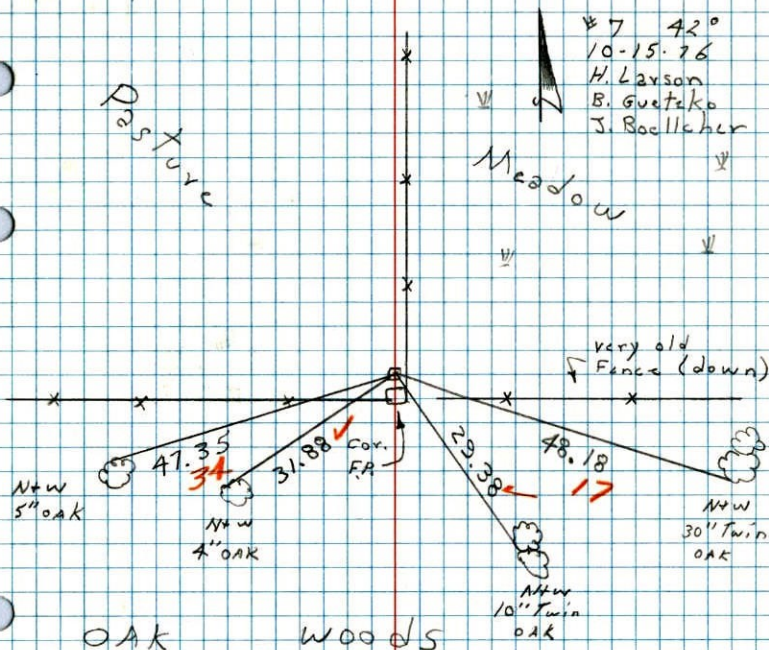
TIE CHECK  
8-11-82  
P. ROSS  
P. HORNBY

TEMPERATURE CORRECTED  
AND HORIZONTALLY  
TAPED MEASUREMENTS

ROLAND W. ANDERSON  
COUNTY SURVEYOR  
ANOKA COUNTY, MINNESOTA

N $\frac{1}{4}$  Cor. Sec. 18 T32 R25

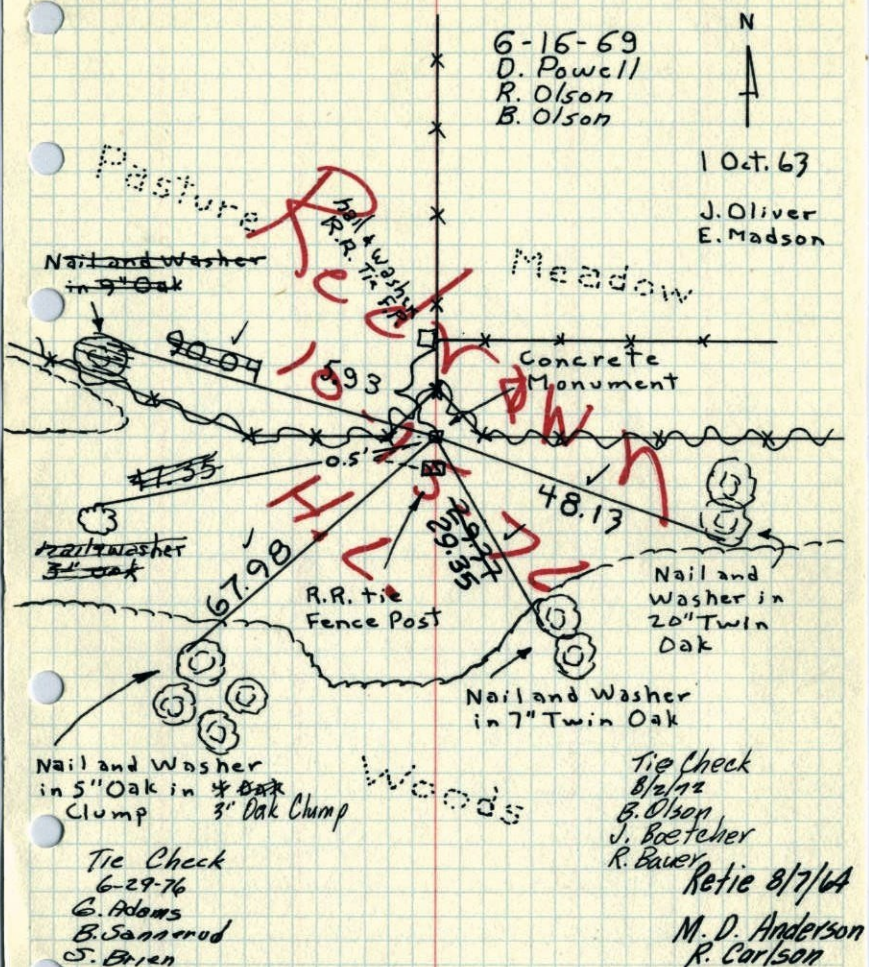
Retied 4" square concrete monuments,  
monument flush & on N. side of Cor. R.R. Tie  
Fence post



OAK WOODS

N 1/4 Cor. Sec. 18, T32, R25

Found 4" Sq. Concrete Monument Flush.

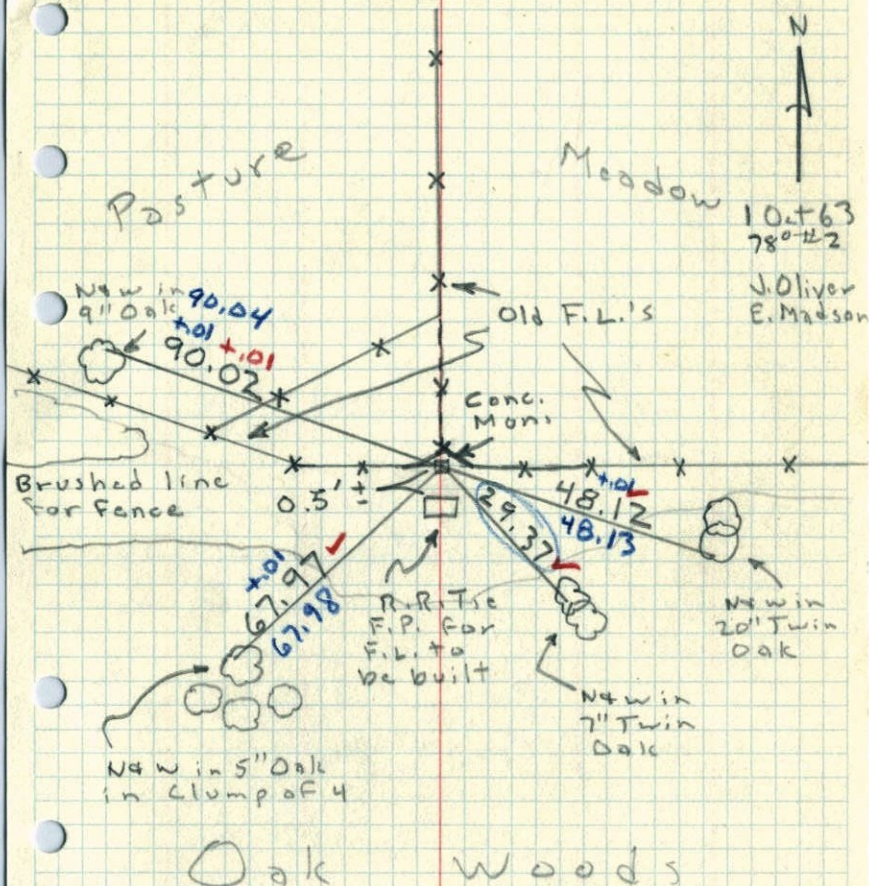


TEMPERATURE CORRECTED  
AND HORIZONTALLY  
TAPED MEASUREMENTS

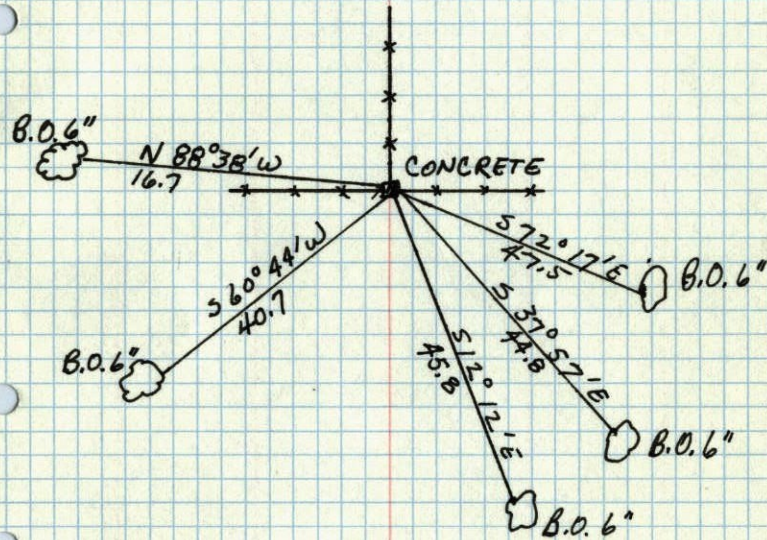
ROLAND W. ANDERSON  
COUNTY SURVEYOR  
ANOKA COUNTY, MINNESOTA

N 1/4 Cor. Sec. 18, T32, R25

Found 4" Sq. Conc. Mon. Flush



N/4 CORNER OF Sec 18, T 32, R 25 W



Nov 4, 1943  
Cartwright