

# CERTIFICATE OF LOCATION OF GOVERNMENT CORNER

County of Anoka

State of Minnesota

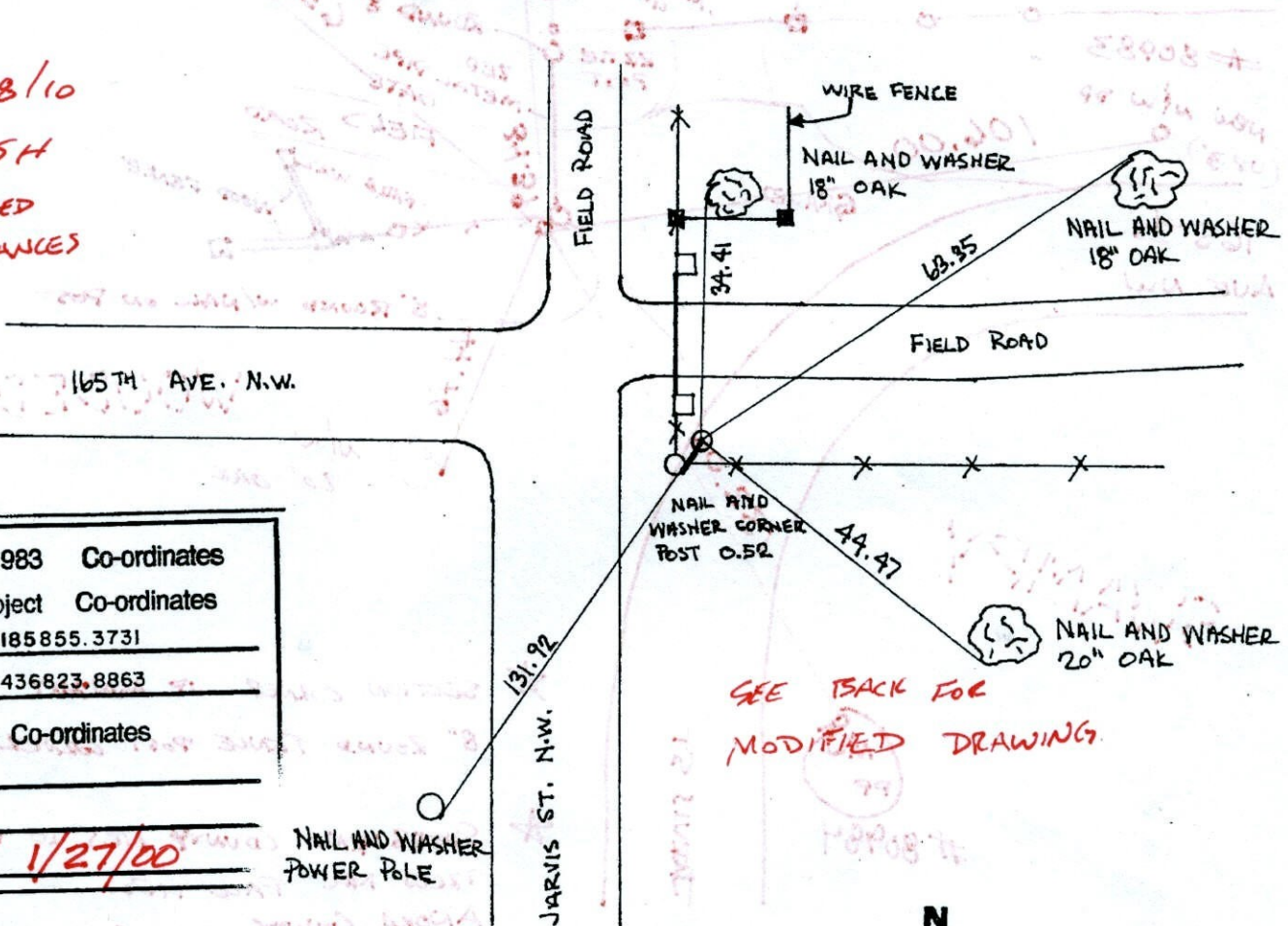
NORTHWEST Corner of Sec. 18 Township 32 Range 25

I hereby certify that on the 17<sup>TH</sup> day of APRIL, 19 61, I found the described corner which was evidenced by GRANTE MONUMENT

and I further certify that to perpetuate the location of said corner, I did, at the exact location thereof, place a permanent marker consisting of SHERBURNE COUNTY CAST IRON MONUMENT

which reference or witness monuments are located in the manner following:

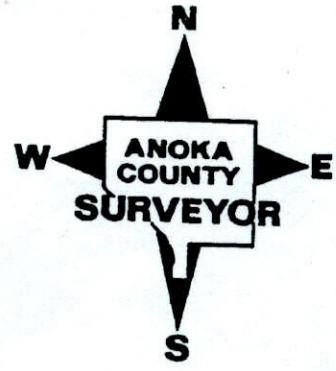
4/28/10  
BK-SH  
TAPED  
DISTANCES



SEE BACK FOR  
MODIFIED DRAWINGS

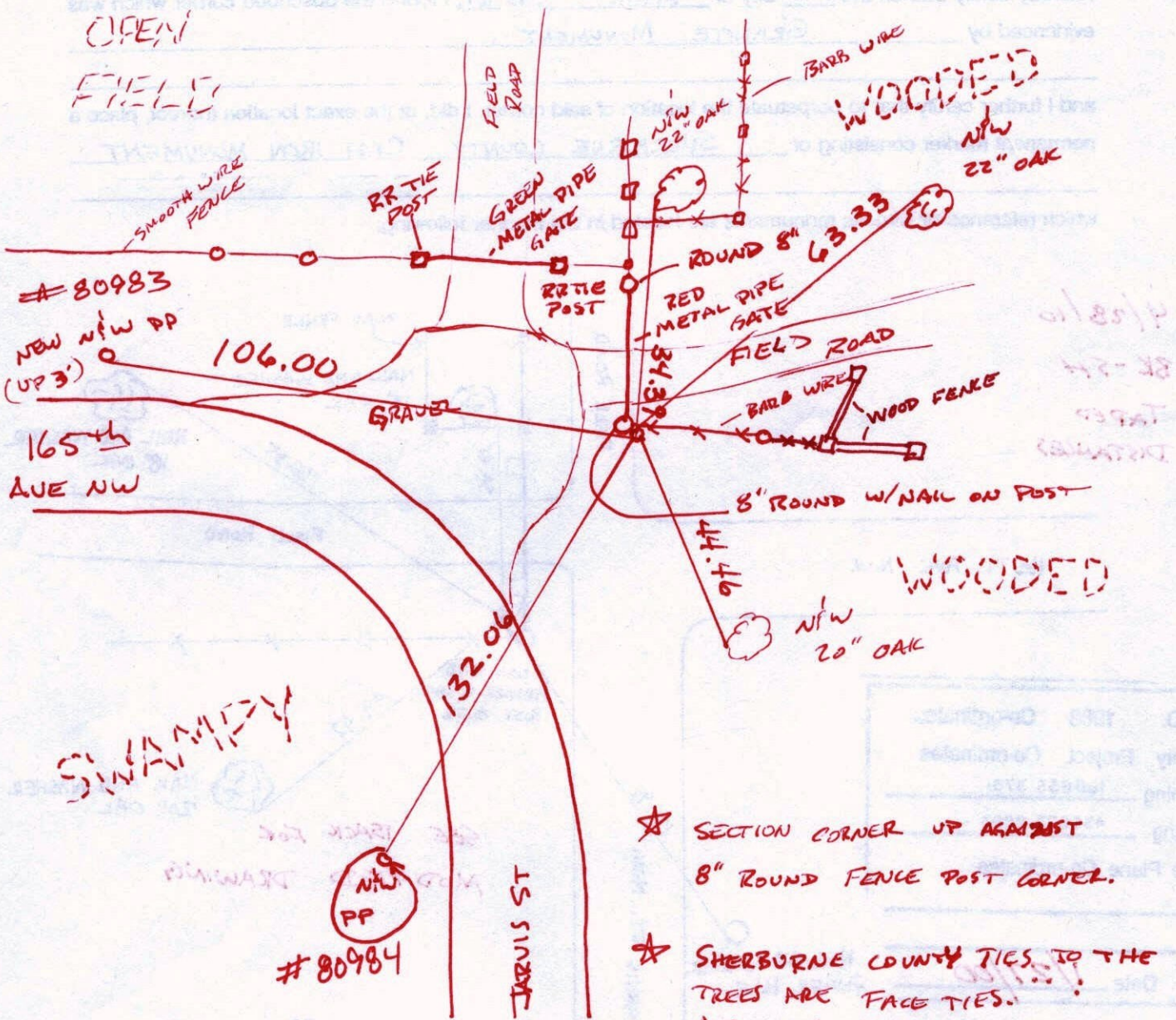
N.A.D.	1983	Co-ordinates
County	Project	Co-ordinates
Northing	<u>185855.3731</u>	
Easting	<u>436823.8863</u>	
State Plane Co-ordinates		
Y	_____	
X	_____	
Date	<u>1/27/00</u>	

Revised date	Revised date	Revised date
8-11-82		
7-31-85		
6-9-88		
8-12-93		
1-27-00		

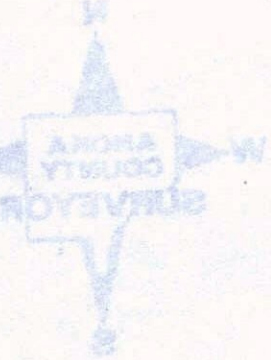


CERTIFICATE OF LOCATION OF GOVERNMENT CORNER

County of Anoka  
 Township of Sec. 12 Range 22



- ★ SECTION CORNER UP AGAINST 8" ROUND FENCE POST CORNER.
- ★ SHERBURNE COUNTY TIES TO THE TREES ARE FACE TIES. ANOKA COUNTY TIES ARE TO THE SAME TREES AS SHERBURNE COUNTY.

# CERTIFICATE OF LOCATION OF GOVERNMENT CORNER

County of Anoka

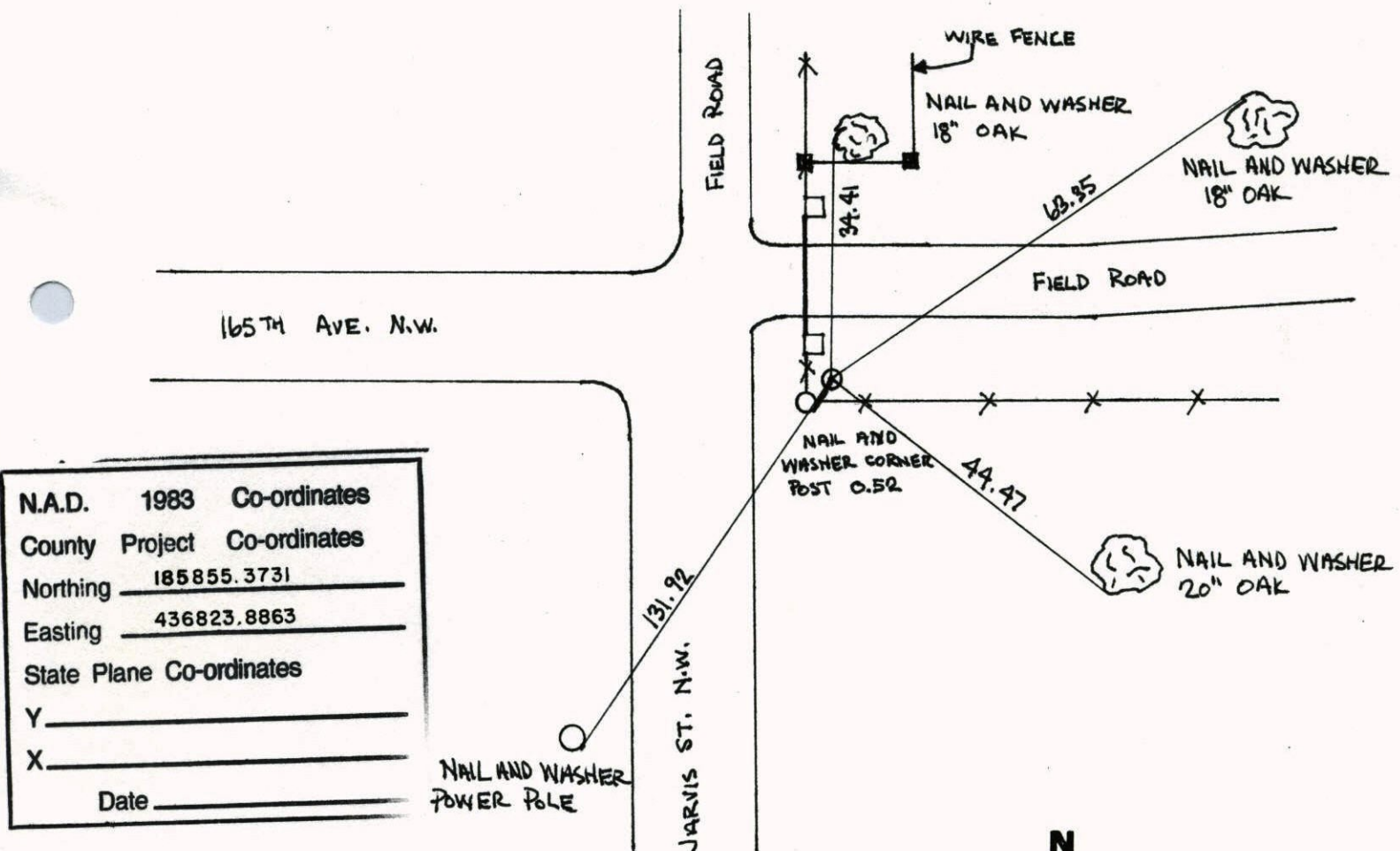
State of Minnesota

NORTHWEST Corner of Sec. 18 Township 32 Range 25

I hereby certify that on the 17<sup>TH</sup> day of APRIL, 19 61, I found the described corner which was evidenced by GRANITE MONUMENT

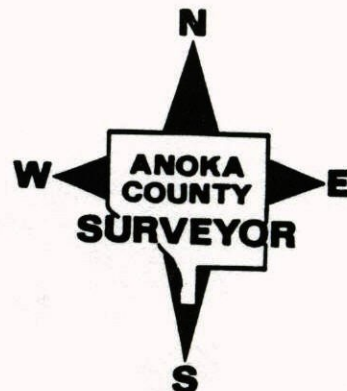
and I further certify that to perpetuate the location of said corner, I did, at the exact location thereof, place a permanent marker consisting of SHERBURNE COUNTY CAST IRON MONUMENT

which reference or witness monuments are located in the manner following:



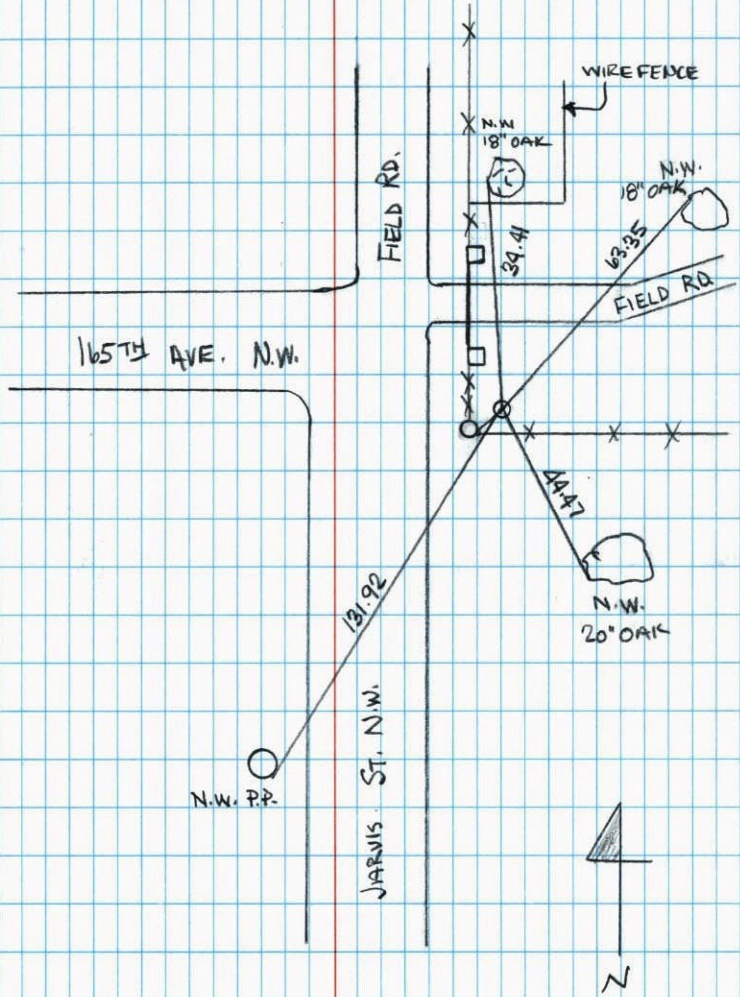
N.A.D.	1983	Co-ordinates
County	Project	Co-ordinates
Northing	<u>185855.3731</u>	
Easting	<u>436823.8863</u>	
State Plane Co-ordinates		
Y	_____	
X	_____	
Date	_____	

Revised date	Revised date	Revised date
<u>8-11-82</u>		
<u>7-31-85</u>		
<u>6-9-88</u>		
<u>8-12-93</u>		
<u>1-27-00</u>		



NORTHWEST CORNER SEC. 18, T. 32, R. 25

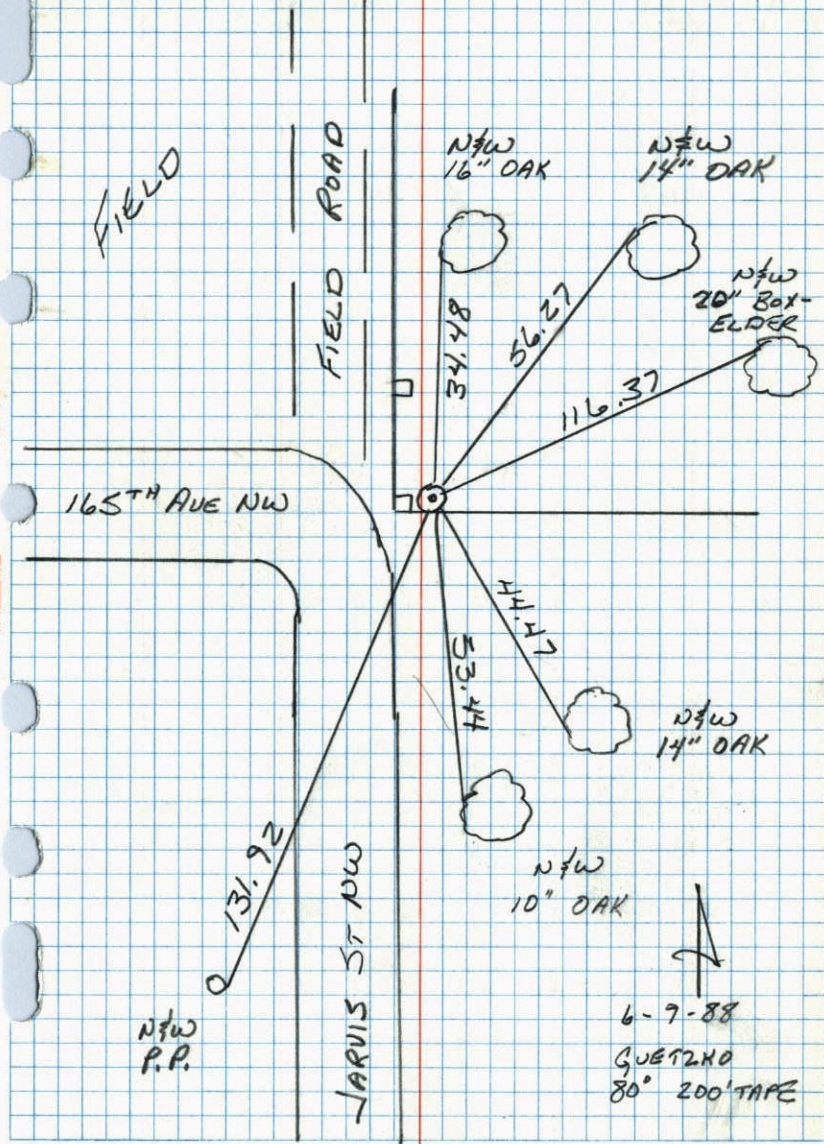
RETIED MON. DURING GPS. WORK



1-27-00  
J. SIMMER  
T. SCHWAB

NW COR. SEC 18 T32 R25

RETIED SHERBURNE CAST IRON MON.



6-7-88  
GUETZHO  
80' 200' TAPE

M.W. Cor. SEC 19-32-25 RAMSEY  
 Found GRANITE Mon at INTERSECT. of N +  
 E. FENCES. Set 1/2" OPEN END IRON N. FACE.

Isanti County  
 Cast Iron Monument  
 found in place  
 8/3/72

Tie Check  
 8/3/72  
 B. Olson  
 J. Bletcher  
 R. Bauer

DIRT

TIE CHECK  
 8-11-82  
 P. ROSS  
 P. HORNBY

New Tie ---  
 5-11-69  
 D. Powell  
 R. Olson  
 B. Olson

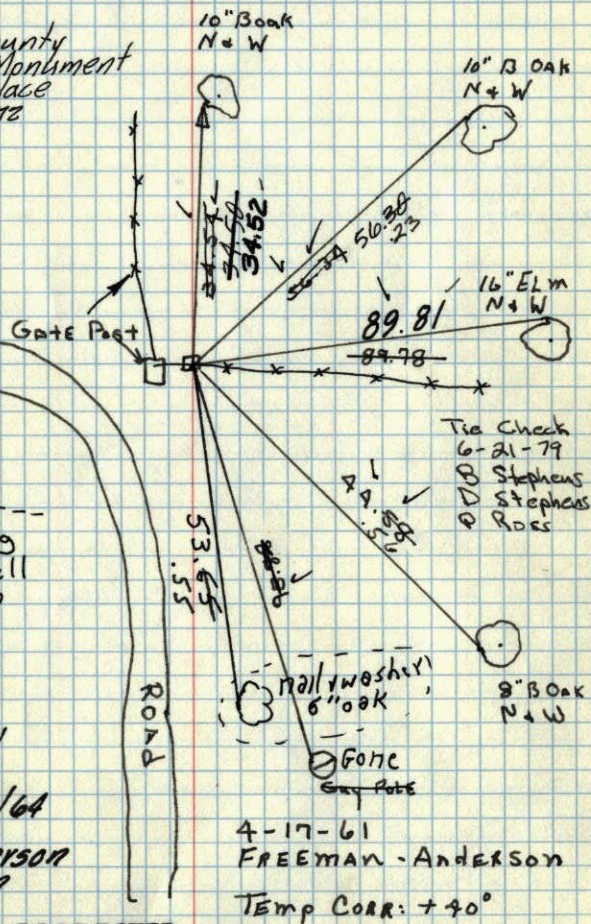
Tie Check  
 6-28-76  
 G. Adams  
 B. Samnerud  
 S. Brien

Retie 8/7/64

M. D. Anderson  
 R. Carlson

TEMPERATURE CORRECTED  
 AND HORIZONTALLY  
 TAPED MEASUREMENTS

ROLAND W. ANDERSON  
 COUNTY SURVEYOR  
 ANOKA COUNTY, MINNESOTA



M.W. Cor. SEC 19-32-25 RAMSEY  
 Found GRANITE Mon at INTERSECT. of N +  
 E. FENCES. Set 1/2" OPEN END IRON N. FACE.

C.I. Mon. in place,

6/11/69

D. Powell

R. Olson

B. Olson

#6-680/

10" B Oak  
 N+W

10" B Oak  
 N+W

16" Elm  
 N+W

8" B Oak  
 N+W

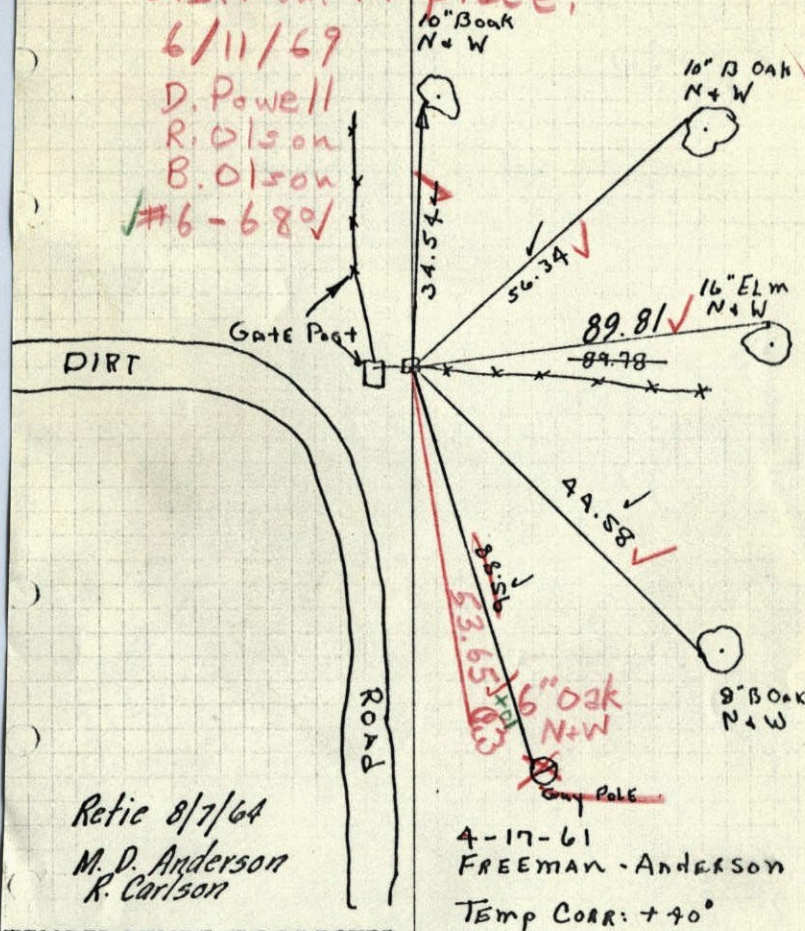
DIRT

Retie 8/7/64

M. D. Anderson  
 R. Carlson

TEMPERATURE CORRECTED  
 AND HORIZONTALLY  
 TAPED MEASUREMENTS

ROLAND W. ANDERSON  
 COUNTY SURVEYOR  
 ANOKA COUNTY, MINNESOTA

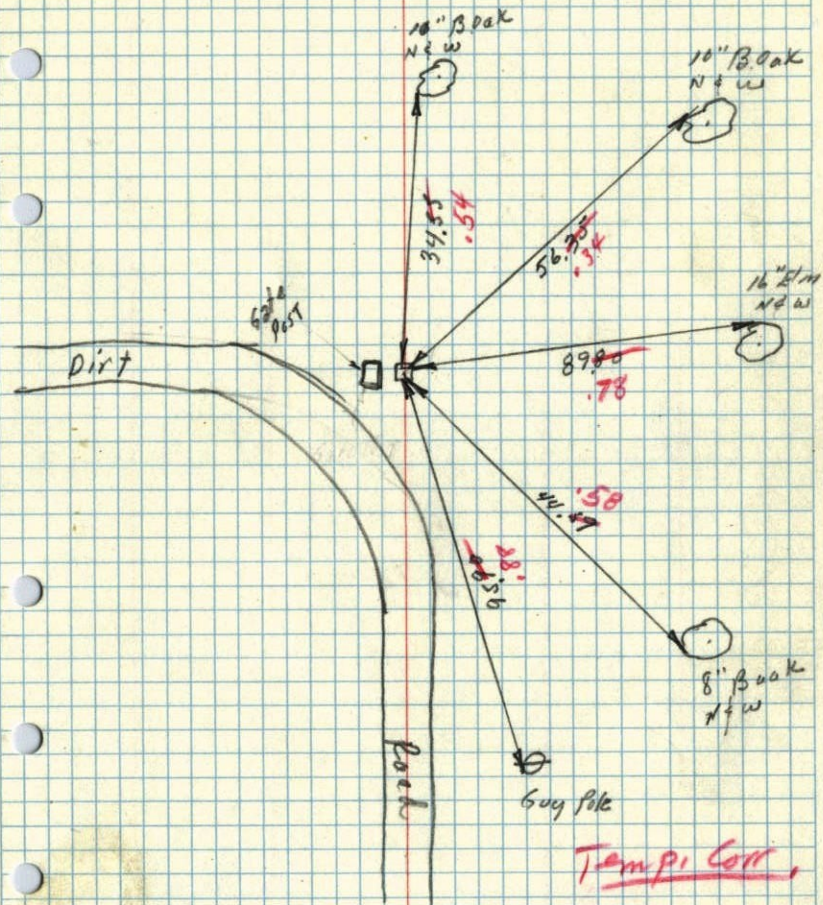


ccc

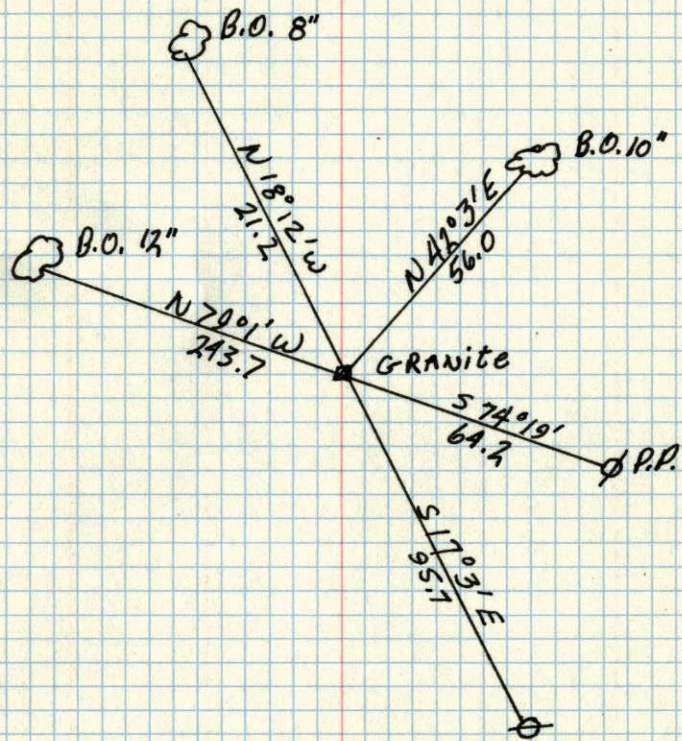
entered  
 #6

17 April 1961  
Freeman Anderson  
+ 40°

N.W. Cor. Sec 18-32-25 Ramsey  
found Granite Mn at intersect. of N &  
E fences. Set  $\frac{1}{2}$ " open end iron N. face



14  
N.W. CORNER OF SEC. 18, T 32, R 25  
GRANITE DOWN 6"



Sept. 24, 1943  
Cartwright