

# CERTIFICATE OF LOCATION OF GOVERNMENT CORNER

County of Anoka

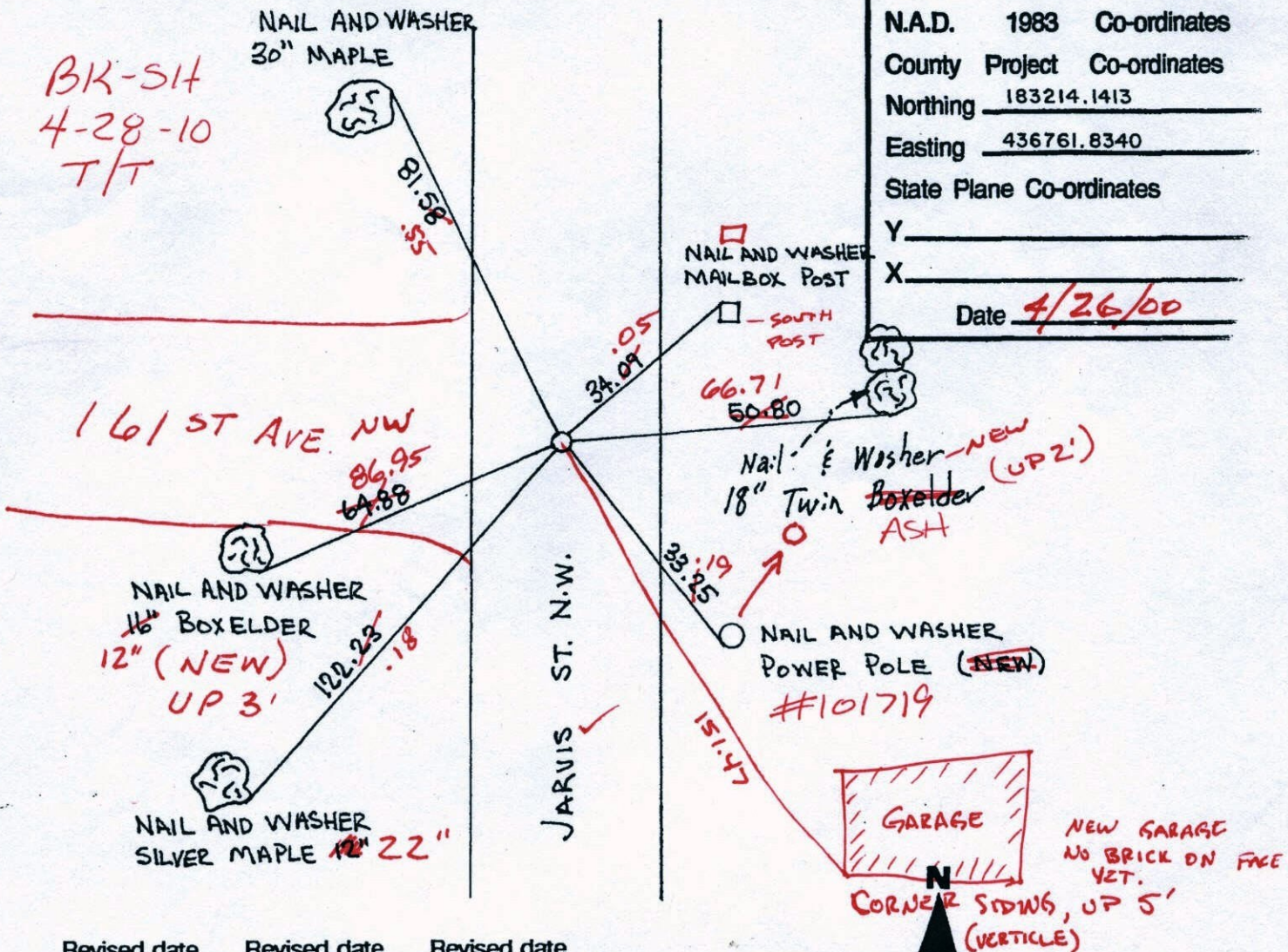
State of Minnesota

WEST 1/4 Corner of Sec. 18 Township 32 Range 25

I hereby certify that on the 7<sup>TH</sup> day of AUGUST, 1964, I found the described corner which was evidenced by CONCRETE MONUMENT

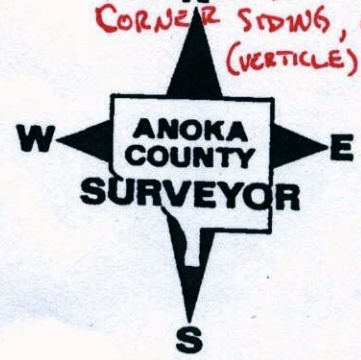
and I further certify that to perpetuate the location of said corner, I did, at the exact location thereof, place a permanent marker consisting of CAST IRON MONUMENT - FALLS IN CTR OF N. BOUND LAKE

which reference or witness monuments are located in the manner following:



N.A.D.	1983	Co-ordinates
County	Project	Co-ordinates
Northing	183214.1413	
Easting	436761.8340	
State Plane Co-ordinates		
Y	_____	
X	_____	
Date	4/26/00	

Revised date	Revised date	Revised date
6-28-76		
8-11-82		
7-30-85		
6-9-88		
9-25-89		
8-12-93		
4-26-00		



# CERTIFICATE OF LOCATION OF GOVERNMENT CORNER

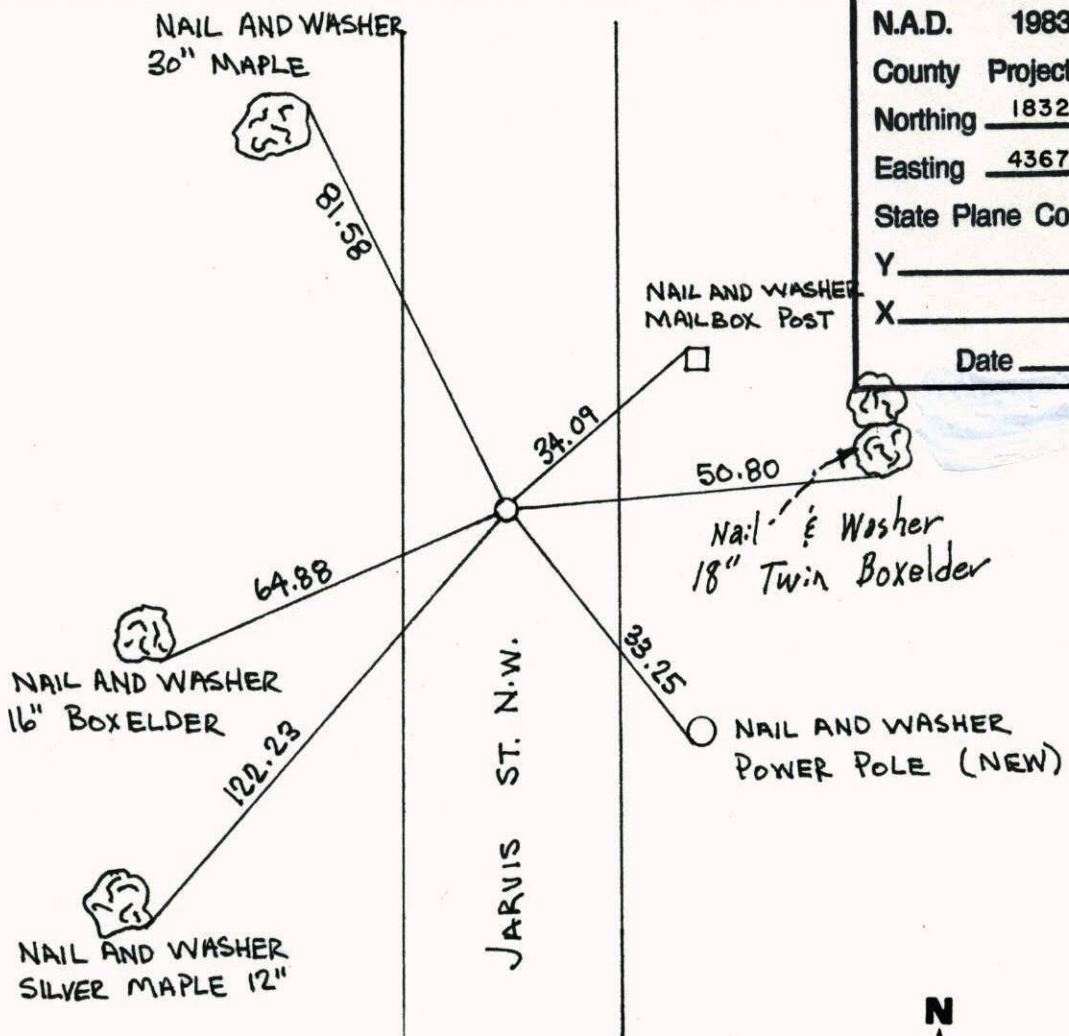
County of Anoka                      State of Minnesota

WEST 1/4 Corner of Sec. 18 Township 32 Range 25

I hereby certify that on the 7<sup>TH</sup> day of AUGUST, 1964, I found the described corner which was evidenced by CONCRETE MONUMENT

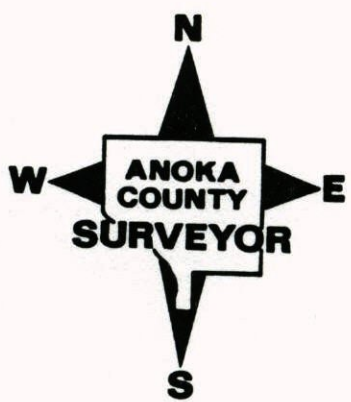
and I further certify that to perpetuate the location of said corner, I did, at the exact location thereof, place a permanent marker consisting of CAST IRON MONUMENT

which reference or witness monuments are located in the manner following:

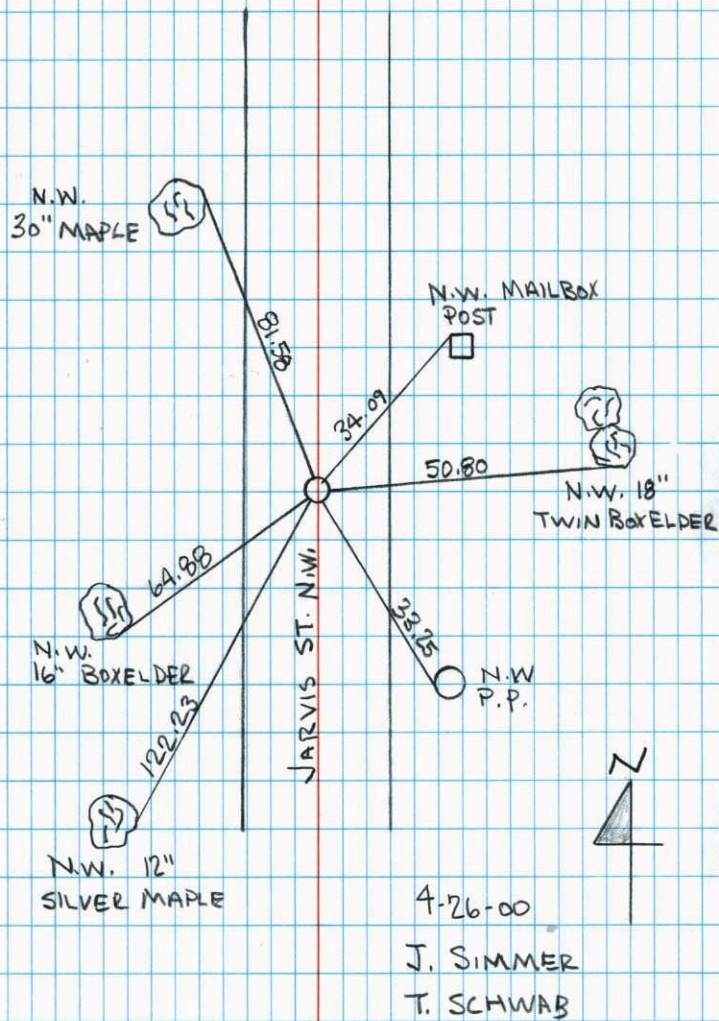


N.A.D.	1983	Co-ordinates
County	Project	Co-ordinates
Northing		<u>183214.1413</u>
Easting		<u>436761.8340</u>
State Plane Co-ordinates		
Y		_____
X		_____
Date _____		

Revised date	Revised date	Revised date
<u>6-28-76</u>		
<u>8-11-82</u>		
<u>7-30-85</u>		
<u>6-9-88</u>		
<u>9-25-89</u>		
<u>8-12-93</u>		
<u>4-26-00</u>		



WEST 1/4 COR. SEC. 18, T. 32, R. 25  
 RETIED C.I.M. DURING G.P.S.

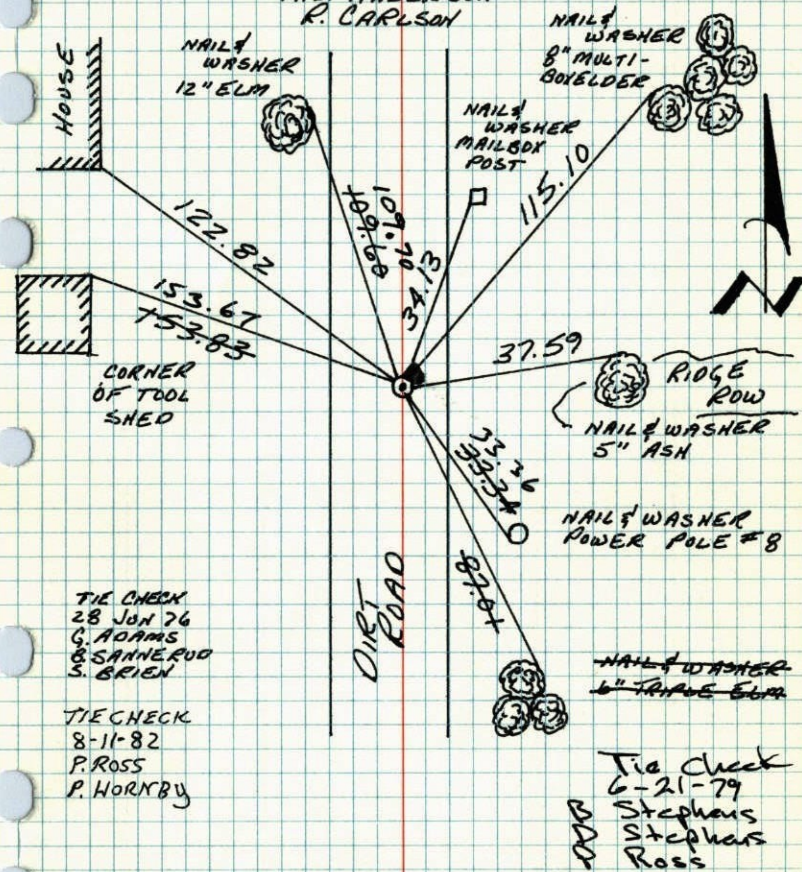


NO. 446

NATIONAL PRINTFAST

## W 1/4 CORNER SECTION 18-T32-R25

SET CAST IRON MONUMENT IN PLACE OF BROKEN  
 CONCRETE MONUMENT. MONUMENT DOWN 0.2' I  
 7 AUG. 64  
 M. D. ANDERSON  
 R. CARLSON



NO. 448

\*TELETYPE

TEMPERATURE CORRECTED  
 AND HORIZONTALLY  
 TAPED MEASUREMENTS

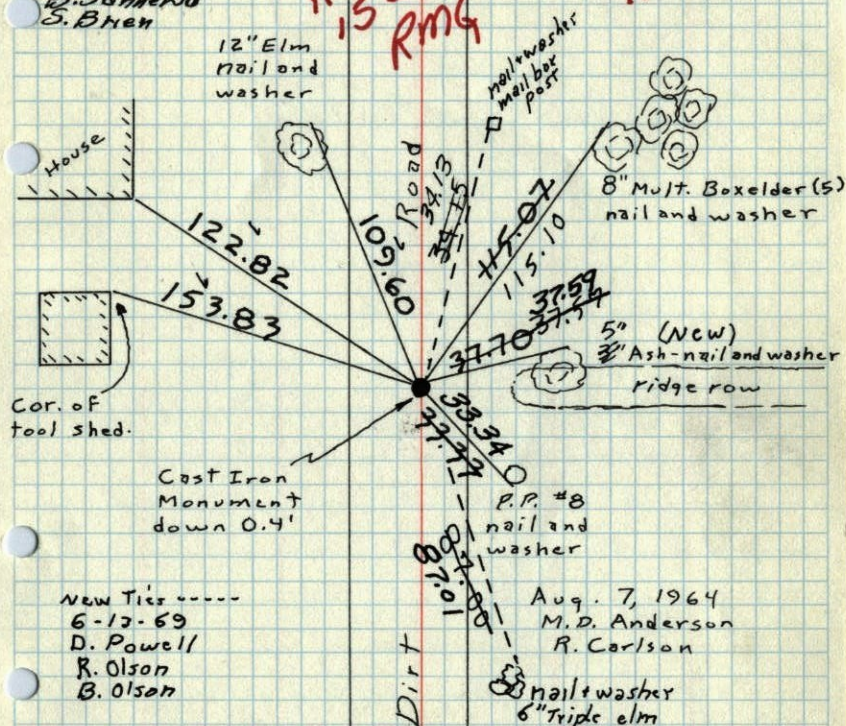
ROLAND W. ANDERSON  
 COUNTY SURVEYOR  
 ANOKA COUNTY, MINNESOTA

W 1/4 Cor. Sec. 18, T32, R25

Replaced broken Concrete Monument with  
Cast Iron Monument. Mon. down 0.2'

Tie Check  
6-28-76  
G. Adams  
B. Sonnenw  
S. Bhen

REDRAWN  
15 JAN 79  
RMG  
SEE NEW  
TIE BOOK



New Ties -----  
6-17-69  
D. Powell  
R. Olson  
B. Olson

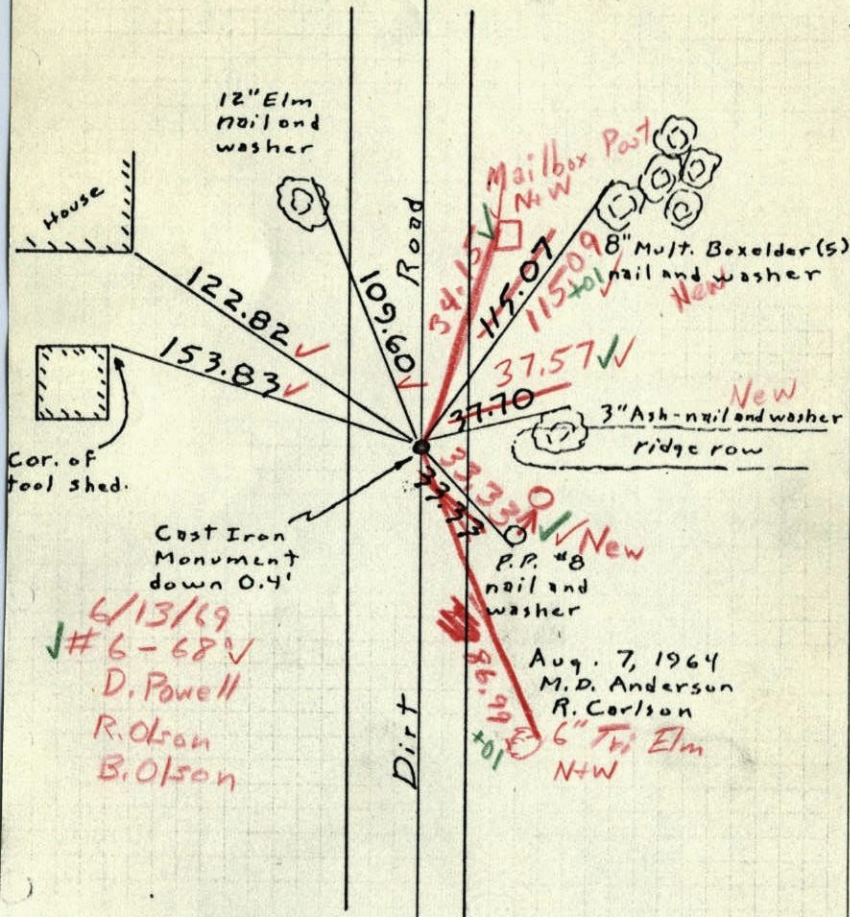
Tie Check  
8/3/72  
B. Olson  
J. Boetcher  
R. Bauer

TEMPERATURE CORRECTED  
AND HORIZONTALLY  
TAPED MEASUREMENTS

ROLAND W. ANDERSON  
COUNTY SURVEYOR  
ANOKA COUNTY, MINNESOTA

W 1/4 Cor. Sec. 18, T32, R25

Replaced broken Concrete Monument with  
Cast Iron Monument. down 0.3'



6/13/69  
#6-68  
D. Powell  
R. Olson  
B. Olson

Aug. 7, 1964  
M. D. Anderson  
R. Carlson  
6" Tri Elm  
N+W

TEMPERATURE CORRECTED  
AND HORIZONTALLY  
TAPED MEASUREMENTS

ROLAND W. ANDERSON  
COUNTY SURVEYOR  
ANOKA COUNTY, MINNESOTA

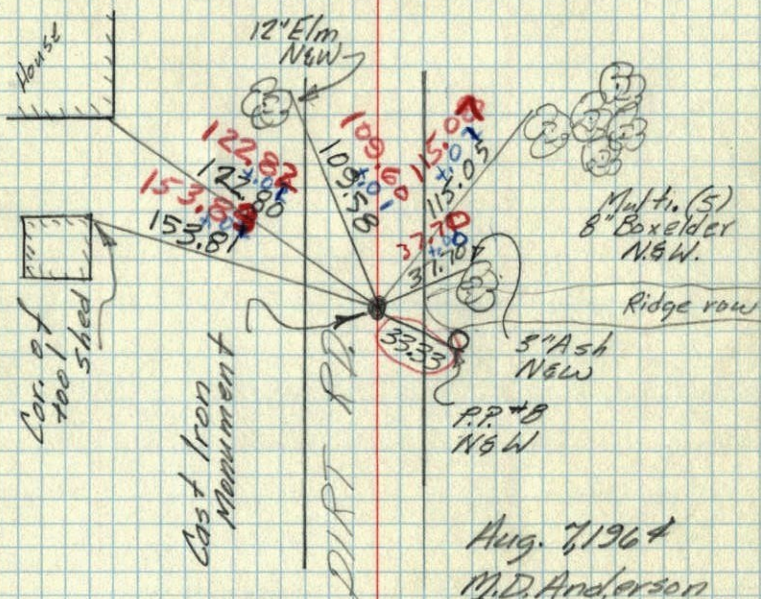
entered  
[Signature]

W 1/4 Cor. Sec. 18-T32-R25

Found Conc. Mon. from one remaining  
Anoka County tie of 4/17/61

Conc. Mon. flush in road and broken  
in half

Replaced with Cast Iron Monument  
down 0.4'



Aug. 7, 1964

M.D. Anderson

R.M. Carlson

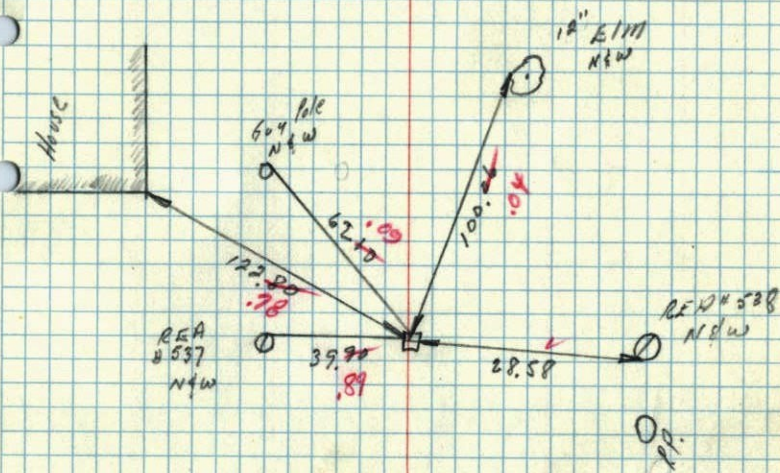
Temp. 75°

Tape #1

17 April 1961  
Freeman Anderson  
+40°

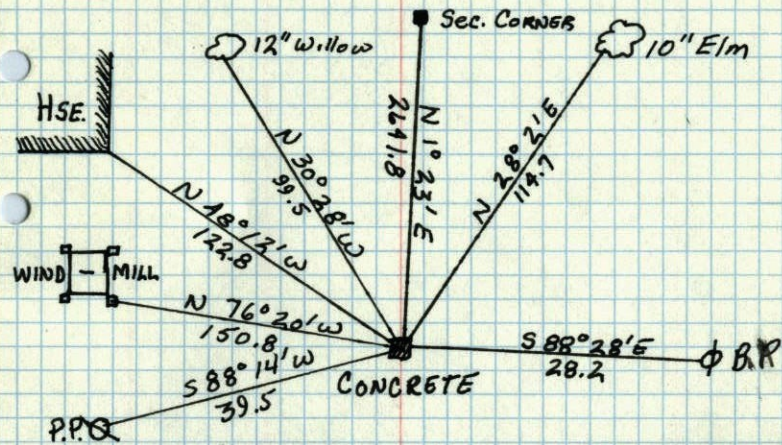
W 1/4 Cor. Sec. 18-32-25 Ramsey -

Found Conc. Mon. Meshia Road. iron pipes  
on N & S faces.



Temp. Corr.

12  
W<sup>1</sup>/<sub>4</sub> CORNER OF SEC. 18, T 32, R 25 ✓



Sept 25, 1943  
CARTWRIGHT