

CERTIFICATE OF LOCATION OF GOVERNMENT CORNER

County of Anoka

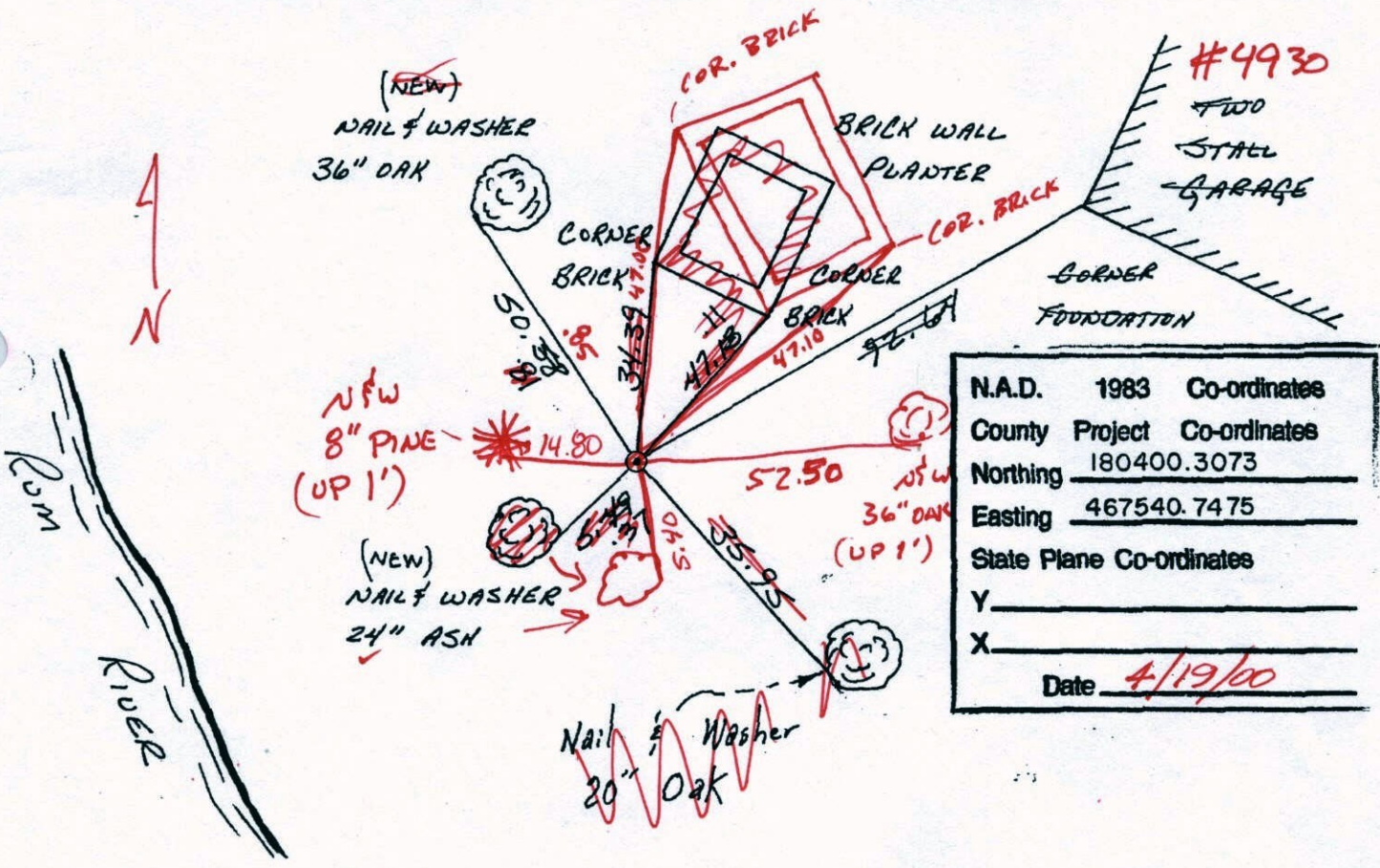
State of Minnesota

Witness ~~F. M. C. E.~~ Corner of Sec. 24 Township 32 Range 25
 NORTH LINE

I hereby certify that on the 8 day of JULY, 1963, I found the described corner which was evidenced by AREA RESURVEY

and I further certify that to perpetuate the location of said corner, I did, at the exact location thereof, place a permanent marker consisting of CAST IRON MONUMENT

which reference or witness monuments are located in the manner following:



N.A.D.	1983	Co-ordinates
County	Project	Co-ordinates
Northing	180400.3073	
Easting	467540.7475	
State Plane Co-ordinates		
Y	_____	
X	_____	
Date	4/19/00	

Revised date
8-18-82
7-29-85
7-14-88
4-19-00

By
P. ROSS
D. ROSS
QUETZKO

Minnesota State Plane Coordinates
 South Zone
 Y _____ X _____

 County Surveyor _____ Date _____
 Registered Land Surveyor No. _____

CERTIFICATE OF LOCATION OF GOVERNMENT CORNER

County of Anoka

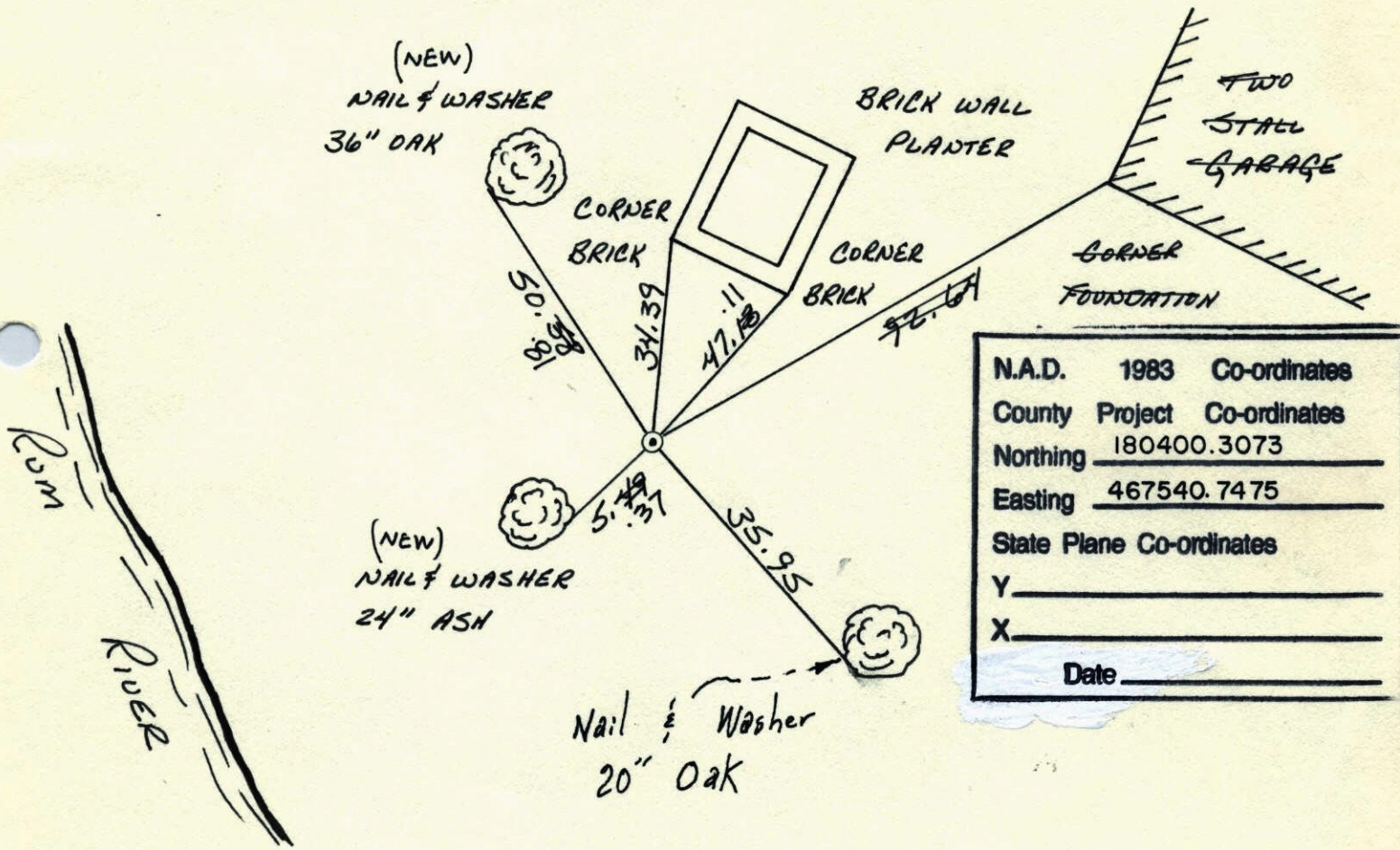
State of Minnesota

WITNESS ~~F.M.C. 22~~ Corner of Sec. 24 Township 32 Range 25
 NORTH LINE

I hereby certify that on the 8 day of JULY, 1963, I found the described corner which was evidenced by AREA RESURVEY

and I further certify that to perpetuate the location of said corner, I did, at the exact location thereof, place a permanent marker consisting of CAST IRON MONUMENT

which reference or witness monuments are located in the manner following:



N.A.D.	1983	Co-ordinates
County	Project	Co-ordinates
Northing		<u>180400.3073</u>
Easting		<u>467540.7475</u>
State Plane Co-ordinates		
Y		_____
X		_____
Date _____		

Revised date	By
8-18-82	P. Ross
7-29-85	D. Ross
7-14-88	GUETZKO
4-19-00	

Minnesota State Plane Coordinates
 South Zone
 Y _____ X _____

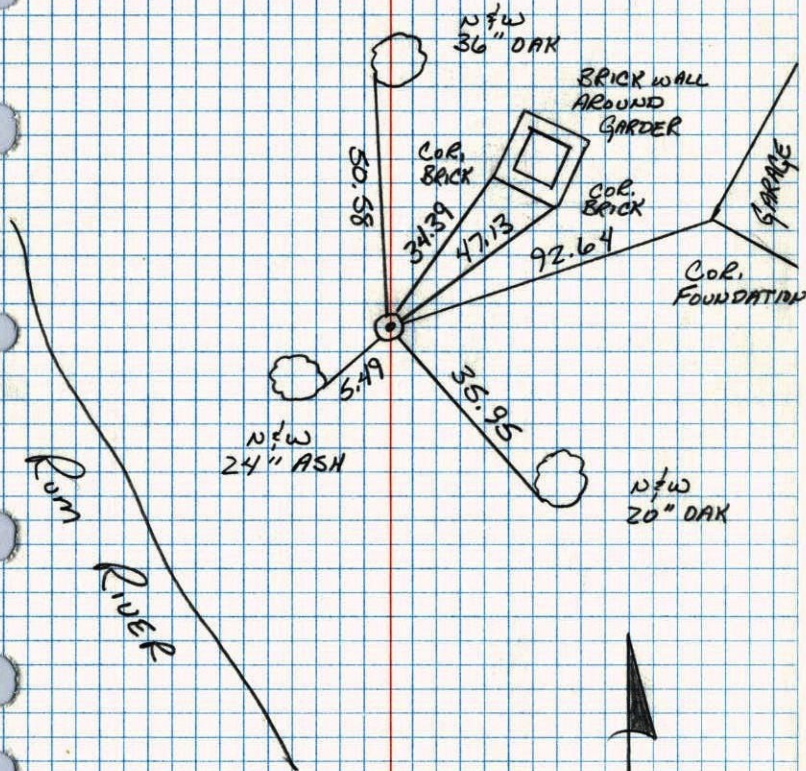
_____, _____
 County Surveyor Date

Registered Land Surveyor No. _____

WITNESS CORNER TO MEANDER CORNER
#22 ON THE NORTH LINE OF
SEC 24 T32 R25.

~~(63' EAST OF MEANDER CORN)~~

RETIED CAST IRON MONUMENT



Witness Corner to M.C. #21 on No. Line
Sec. 24, T. 32, R. 25.

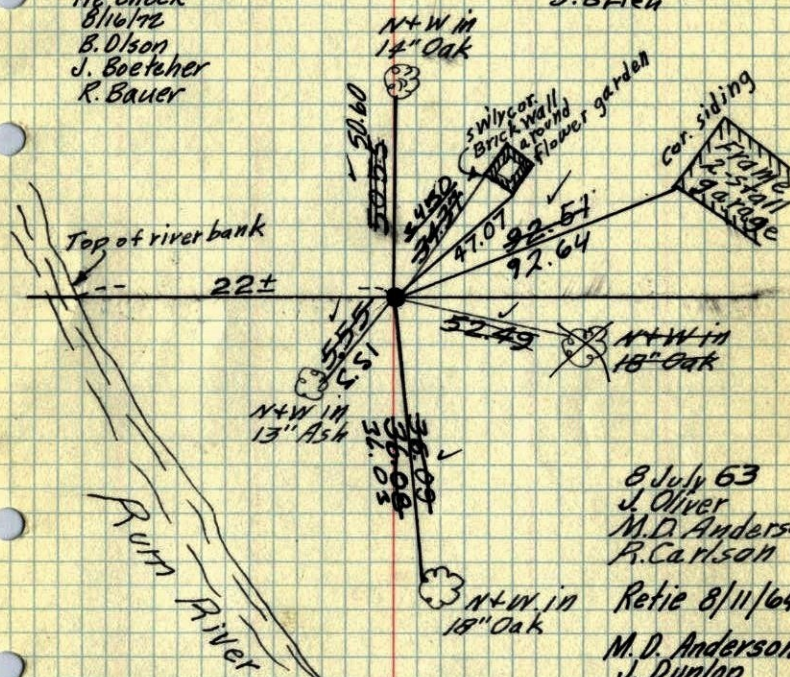
Set Cast Iron Mon. from resurvey, 62.5ft
E. of Meander Corner.

Monument flush.

Tie check

6-28-76
G. Adams
B. Sommerud
S. Brien

Tie Check
8/16/72
B. Olson
J. Boetcher
R. Bauer



8 July 63
J. Oliver
M.D. Anderson
R. Carlson
Retie 8/11/64
M.D. Anderson
J. Dunlop

TEMPERATURE CORRECTED
AND HORIZONTALLY
TAPED MEASUREMENTS

Tie check
7-6-79
Stephens
Stephens
Ross

TIE CHECK

8-18-82
P. ROSS
P. HORNBY

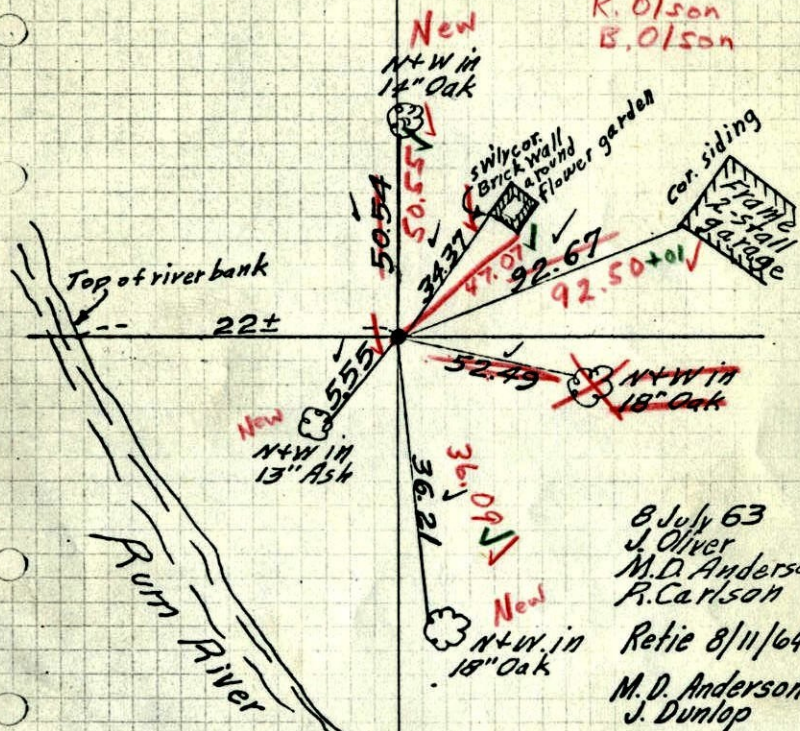
Tie Check
June 18, 1969
P. Powell
R. Olson
B. Olson

ROLAND W. ANDERSON
COUNTY SURVEYOR
ANOKA COUNTY, MINNESOTA

Witness Corner to M.C. #21 on No. Line
Sec. 24, T. 32, R. 25.

Set Cast Iron Mon. from resurvey, 62. ft
E. of Meander Corner.

Flush
6/18/69
#6 - 70°
D. Powell
R. Olson
B. Olson



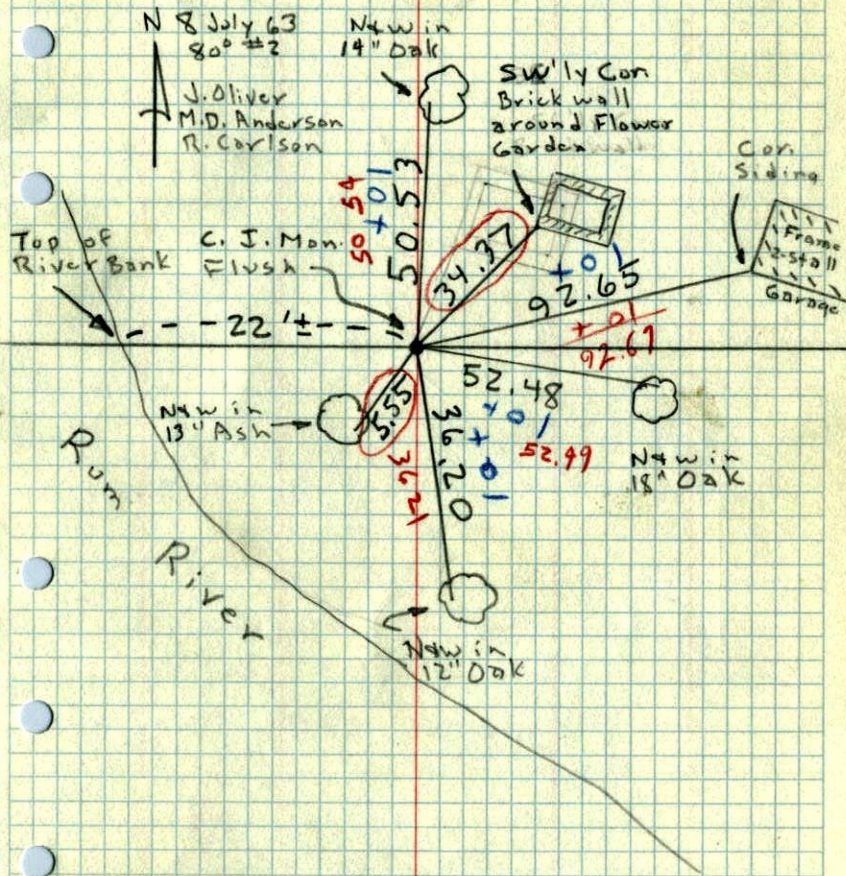
8 July 63
J. Oliver
M.D. Anderson
R. Carlson
Retie 8/11/64
M.D. Anderson
J. Dunlop

TEMPERATURE CORRECTED
AND HORIZONTALLY
TAPED MEASUREMENTS

ROLAND W. ANDERSON
COUNTY SURVEYOR
ANOKA COUNTY, MINNESOTA

Witness Corner to M.C. #21 on No. line
Sec. 24, T. 32, R. 25

Set Cast Iron Monument from Resurvey,
62.00' E. of Meander Corner.



N 8 July 63
80° #2
N+W in 14" Oak
J. Oliver
M.D. Anderson
R. Carlson

swly cor.
Brick wall
around Flower
Garden

con.
Siding
Frame
2-stall
Garage

C. J. Mon.
Flush

Rum
River

N+W in
18" Oak

N+W in
12" Oak