

CERTIFICATE OF LOCATION OF GOVERNMENT CORNER

County of Anoka State of Minnesota

WITNESS ON
EAST LINE Corner of Sec. 18 Township 32 Range 25

I hereby certify that on the 2 day of OCT., 1963, I found the described corner which was evidenced by CONCRE MON.

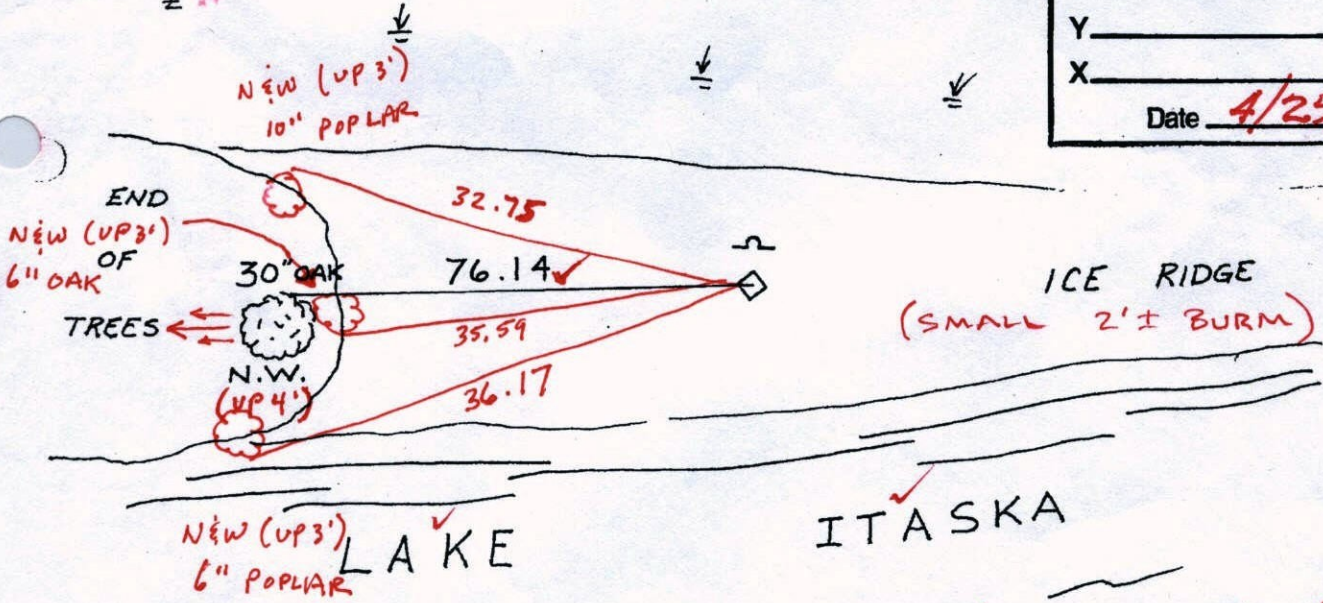
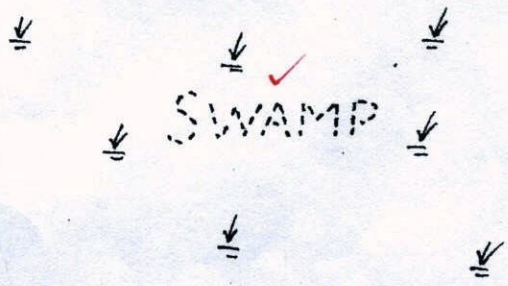
0.4 CONC. MON. (SQUARE)

and I further certify that to perpetuate the location of said corner, I did, at the exact location thereof, place a permanent marker consisting of SAME SIGN AND POST ON NORTH SIDE ✓ (UP 0.6')

which reference or witness monuments are located in the manner following:

| | | |
|--------------------------|--------------------|--------------|
| N.A.D. | 1983 | Co-ordinates |
| County | Project | Co-ordinates |
| Northing | <u>181197.4222</u> | |
| Easting | <u>442207.7210</u> | |
| State Plane Co-ordinates | | |
| Y | _____ | |
| X | _____ | |
| Date | <u>4/25/00</u> | |

12/21/10
 SH. BK. SS.
 TAPED
 6-7-10
 WET.
 DO WINTER



ICE RIDGE
 (SMALL 2'± BURM)

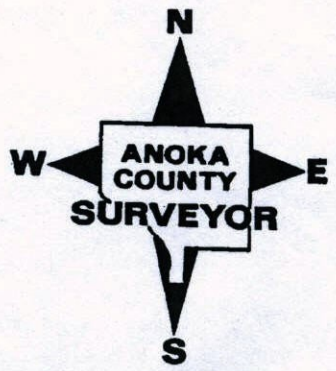
ITASKA

(SWAMPY)

★

LAT: 45.257742
 LONG: -93.491076

| Revised date | Revised date | Revised date |
|----------------|--------------|--------------|
| <u>6-10-88</u> | | |
| <u>5-13-96</u> | | |
| <u>4-25-00</u> | | |
| | | |
| | | |
| | | |



CERTIFICATE OF LOCATION OF GOVERNMENT CORNER

County of Anoka

State of Minnesota

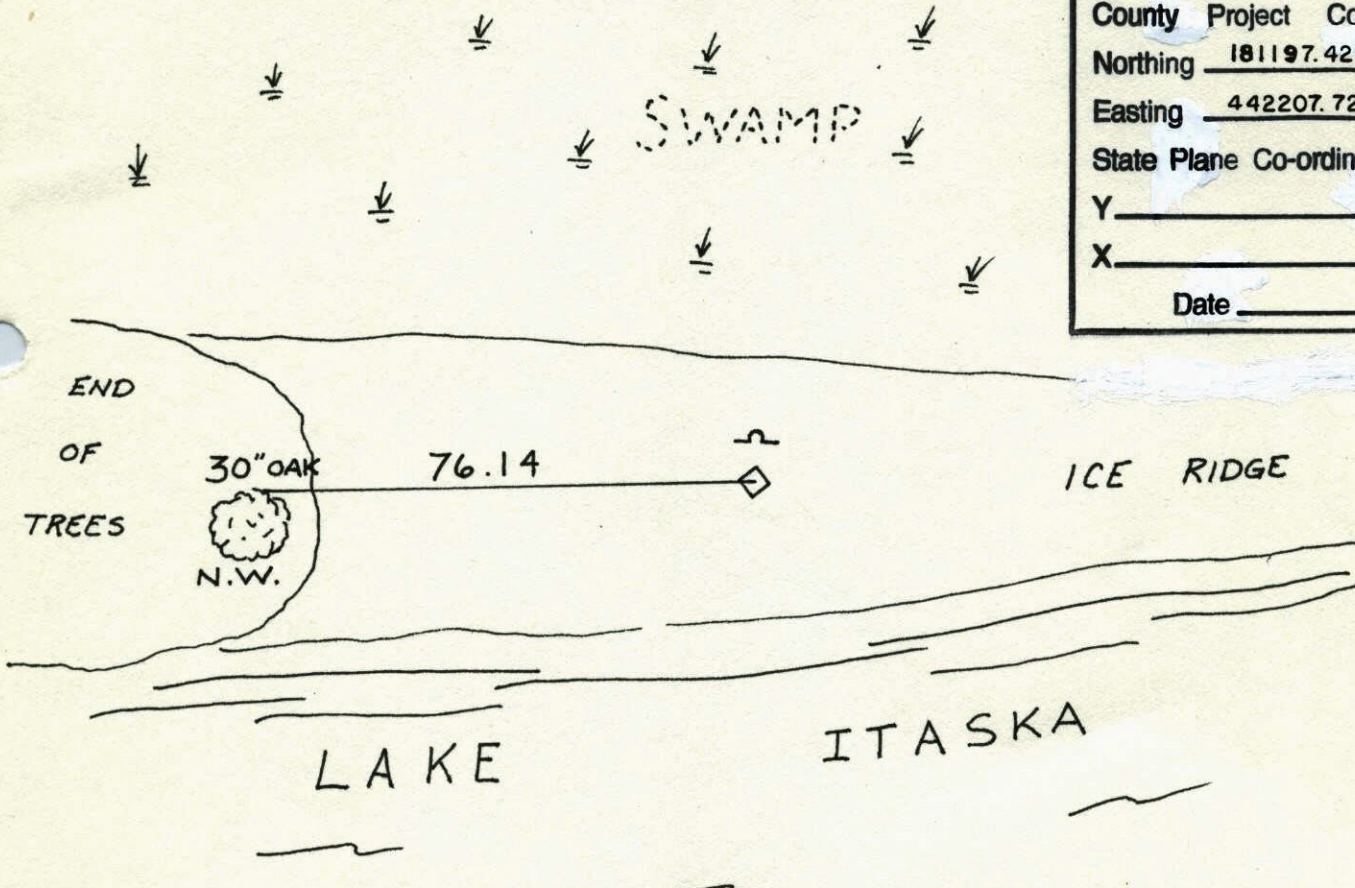
WITNESS ON
EAST LINE Corner of Sec. 18 Township 32 Range 25

I hereby certify that on the 2 day of OCT., 1963, I found the described corner which was evidenced by CONCRE MON.

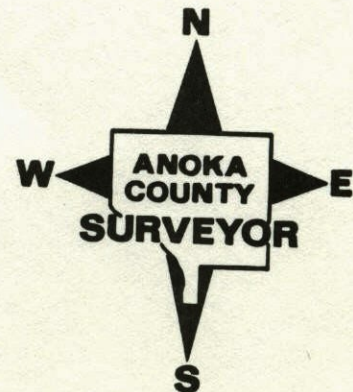
and I further certify that to perpetuate the location of said corner, I did, at the exact location thereof, place a permanent marker consisting of SAME, SIGN AND POST ON
NORTH SIDE

which reference or witness monuments are located in the manner following:

| | | |
|--------------------------|--------------------|--------------|
| N.A.D. | 1983 | Co-ordinates |
| County | Project | Co-ordinates |
| Northing | <u>181197.4222</u> | |
| Easting | <u>442207.7210</u> | |
| State Plane Co-ordinates | | |
| Y | _____ | |
| X | _____ | |
| Date _____ | | |



| Revised date | Revised date | Revised date |
|----------------|--------------|--------------|
| <u>6-10-88</u> | | |
| <u>5-13-96</u> | | |
| <u>4-25-00</u> | | |
| | | |
| | | |
| | | |



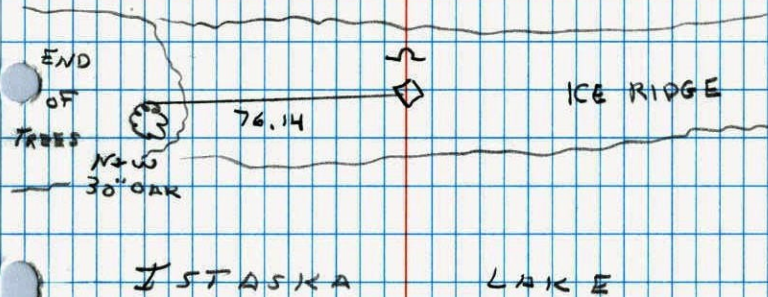
WITNESS COR. ON EAST LINE SEC. 18 T32R25

RETIED CONCRETE MONUMENT

SIGN + POST ON NORTH SIDE.

5-13-96
H. LARSON
B. KLENZ

SWAMP



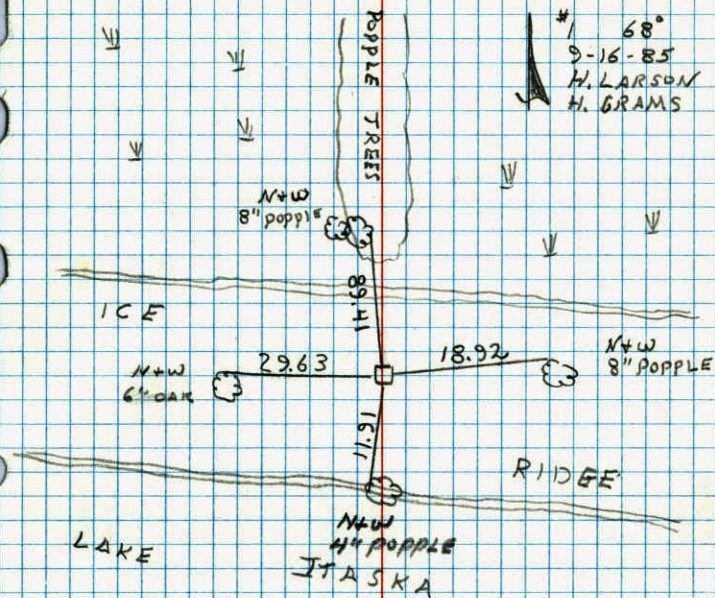
NO. 446

NATIONAL PRINTFAST

M.C. ON EAST LINE OF SEC. 18 T32 R25

RETIED CONCRETE MONUMENT

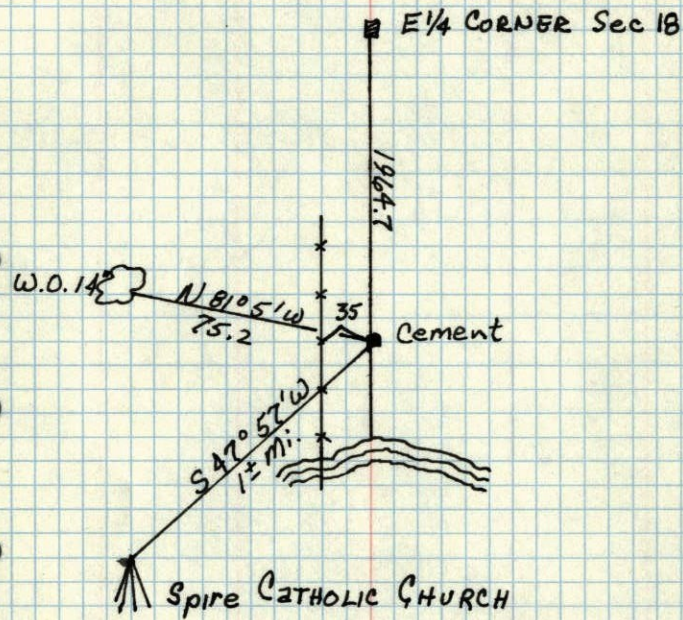
#1 68°
9-16-85
H. LARSON
H. GRAMS



NO. 446

NATIONAL PRINTFAST

M.C. corner of E. line Sec 18, T 32N, R 25W
Concrete flush



Nov 4, 1943
Cartwright