

CERTIFICATE OF LOCATION OF GOVERNMENT CORNER

County of Anoka

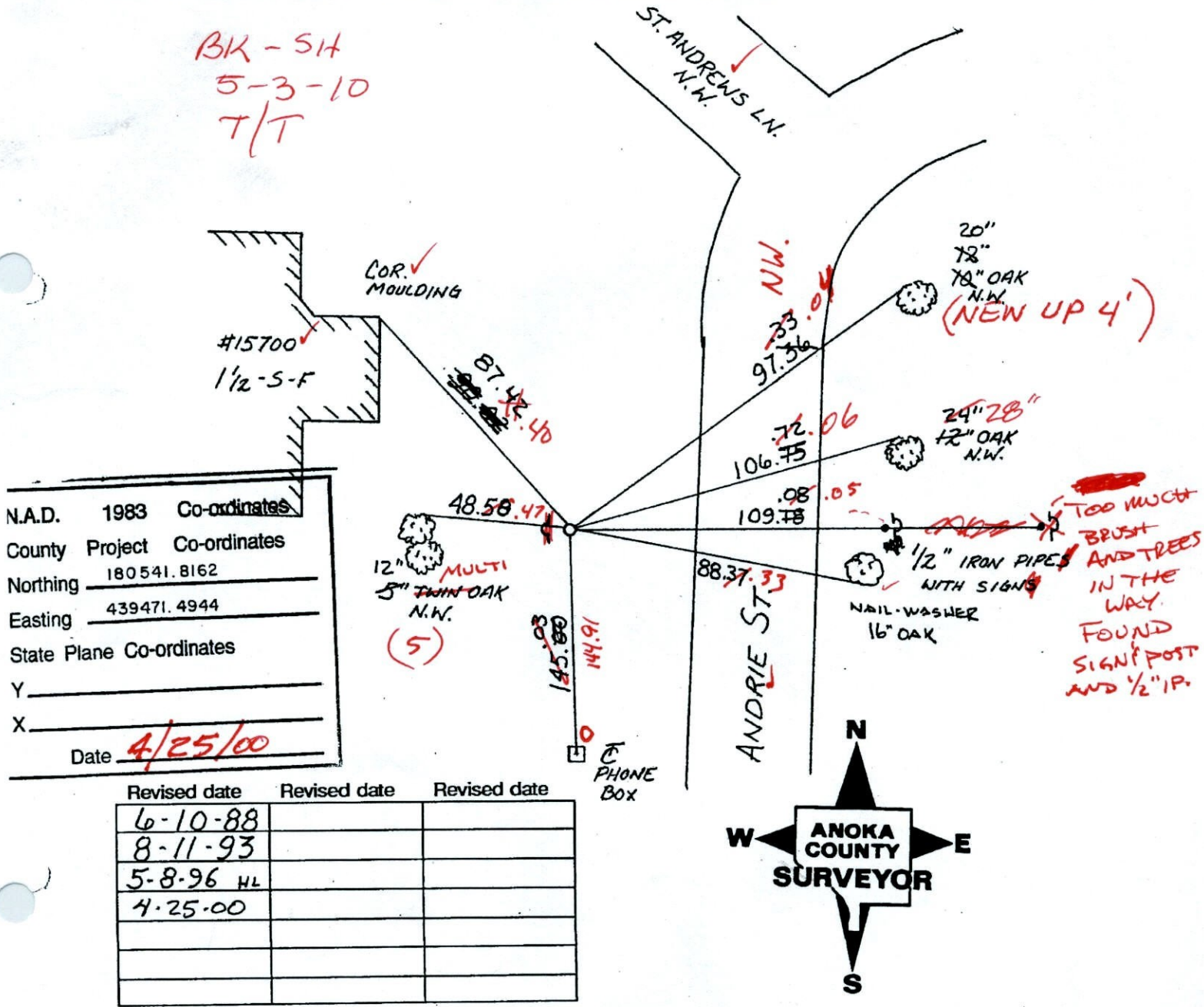
State of Minnesota

SOUTH QTR. Corner of Sec. 18 Township 32 Range 25

I hereby certify that on the 1 day of OCT., 1963, I found the described corner which was evidenced by CONCRETE MON.

and I further certify that to perpetuate the location of said corner, I did, at the exact location thereof, place a permanent marker consisting of CAST IRON WITH SIGN AND POST
ON WEST SIDE (DOWN 1.0')

which reference or witness monuments are located in the manner following:



N.A.D. 1983 Co-ordinates
 County Project Co-ordinates
 Northing 180541.8162
 Easting 439471.4944
 State Plane Co-ordinates
 Y _____
 X _____
 Date 4/25/00

CERTIFICATE OF LOCATION OF GOVERNMENT CORNER

County of Anoka

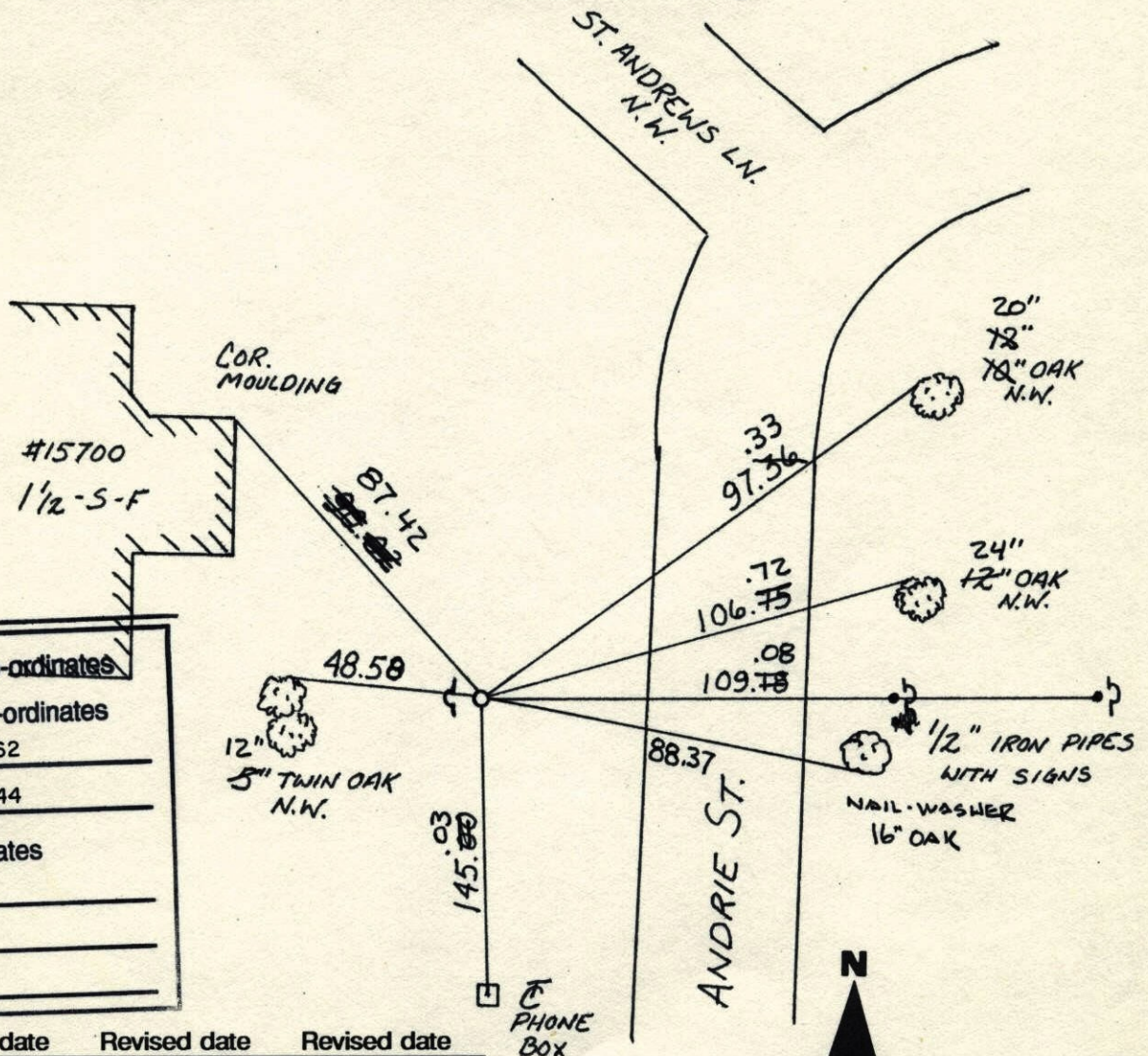
State of Minnesota

SOUTH QTR. Corner of Sec. 18 Township 32 Range 25

I hereby certify that on the 1 day of OCT., 1963, I found the described corner which was evidenced by CONCRETE MON.

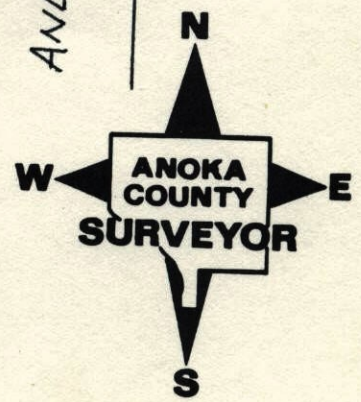
and I further certify that to perpetuate the location of said corner, I did, at the exact location thereof, place a permanent marker consisting of CAST IRON WITH SIGN AND POST
ON WEST SIDE

which reference or witness monuments are located in the manner following:



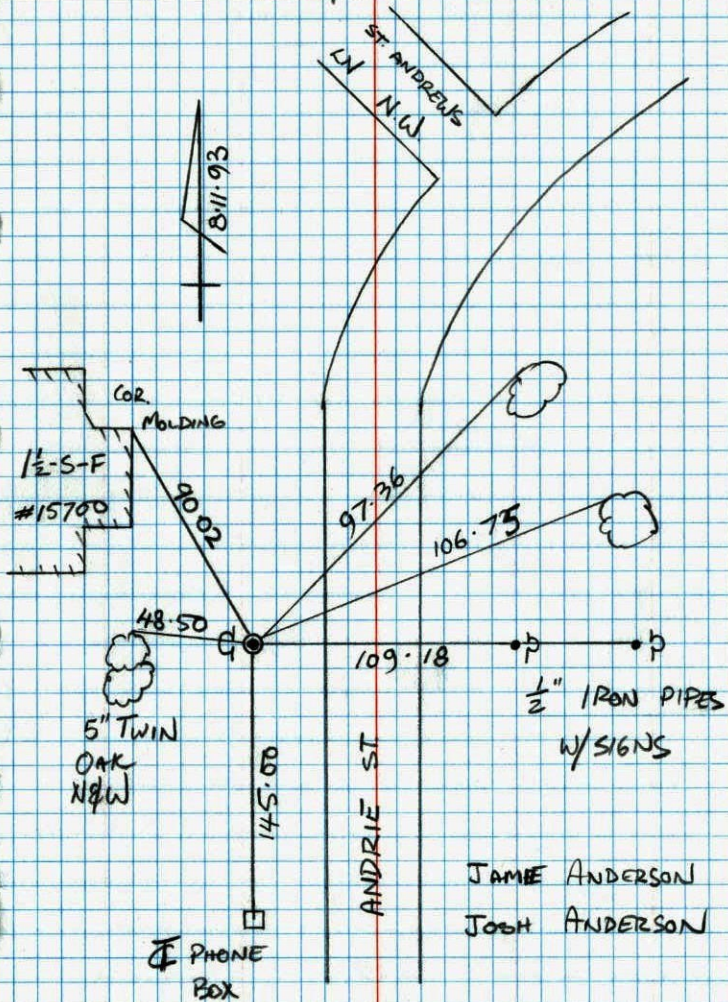
N.A.D.	1983	Co-ordinates
County Project	Co-ordinates	
Northing	180541.8162	
Easting	439471.4944	
State Plane Co-ordinates		
Y	_____	
X	_____	
Date	_____	

Revised date	Revised date	Revised date
6-10-88		
8-11-93		
5-8-96 HL		
4-25-00		



SOUTH 1/4 SEC 18 T32 R25

RETRIEVE CAST IRON MONUMENT
WITH SIGN & POST ON WEST SIDE

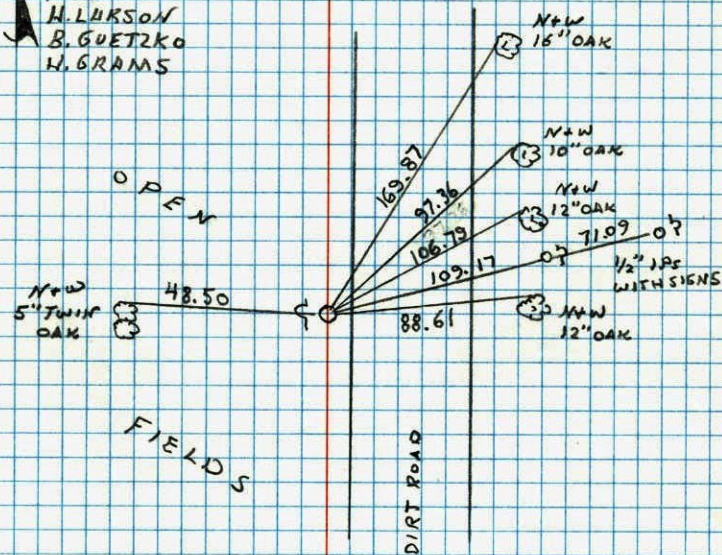


JAMIE ANDERSON
JOHN ANDERSON

S 1/4 CORNER SECTION 18 T32 R25

RESET AND RETIED AFTER ROAD CONST.
RESET FROM TRANSIT TIES AND ONE
REMAINING TREE. SIGN & POST ON
WEST SIDE.

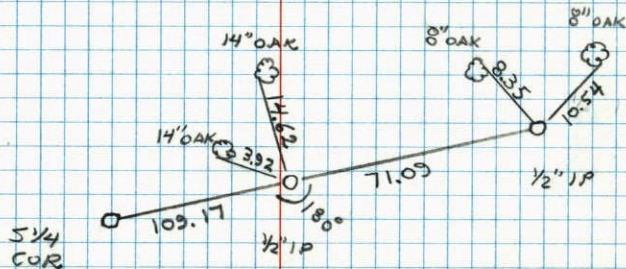
45 80°
7-16-86
H. LARSON
B. GUETZKO
H. GRAMS



CONSTRUCTION TIES FOR S¹/₄ COR

SECTION 18 T32 R25

SET AND TIED 1/2" IRON PIPES WITH SIGN
AND POSTS NE SIDES



RESET + RETIED

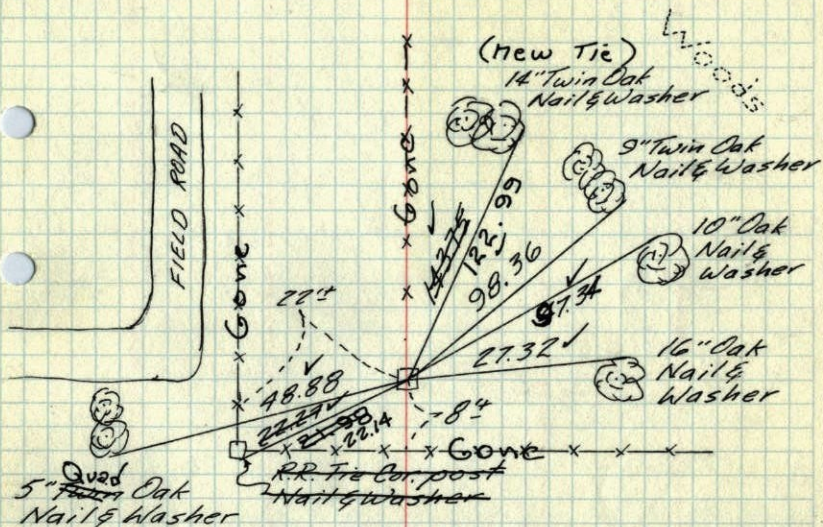
7-16-86

H. LARSON

H. LARSON
B. GUETZKO
9-5-85

S¹/₄ Cor. Sec. 18-32-25

Found 4"x4" Conc. Monument Up 0.2'



TIE CHECK

8-12-82

P. ROSS

P. HORNBY

TIE CHECK

7-1-76

G. ADAMS

B. SANNERUD

S. BRIEN

Tie Check

6-28-79

B. STEPHENS

D. STEPHENS

P. ROSS

Tie Check

8/1/62

B. OLSON

J. BOETCHER

Field

Oct. 1, 1963

6-16-69

D. POWELL

R. OLSON

B. OLSON

J. OLIVER

E. MADSON

Retie 8/11/64

M. D. ANDERSON

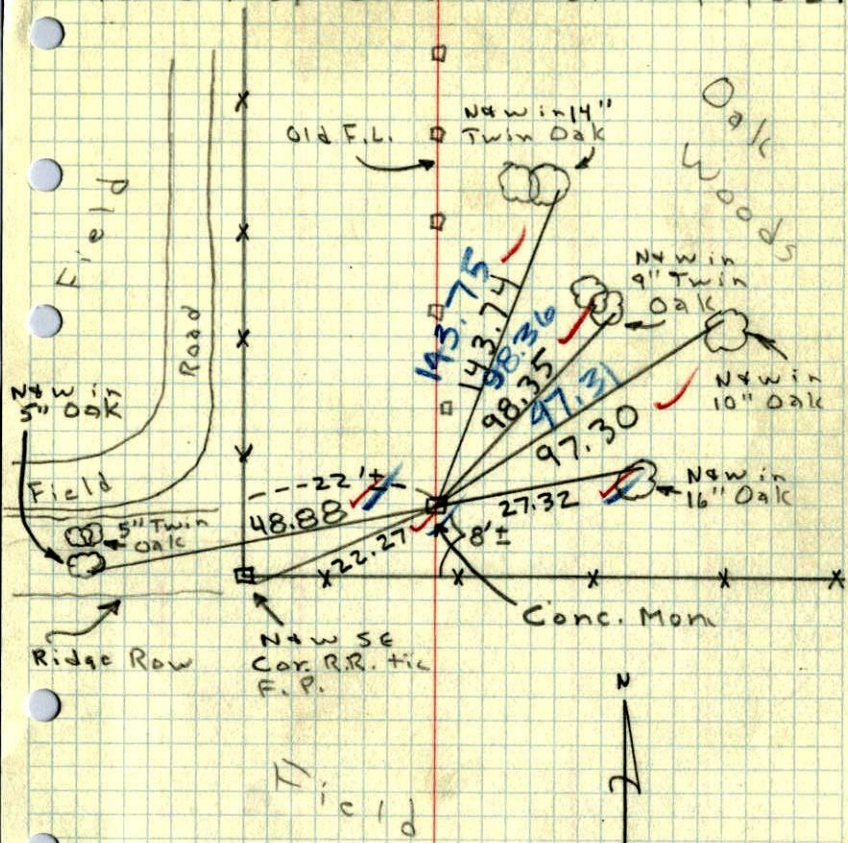
J. DUNLOP

TEMPERATURE CORRECTED
AND HORIZONTALLY
TAPED MEASUREMENTS

ROLAND W. ANDERSON
COUNTY SURVEYOR
ANOKA COUNTY, MINNESOTA

So. 1/4 Cor. Sec. 18, T32, R25

Found 4" Sq. Conc. Mon. Sticking up 0.2'

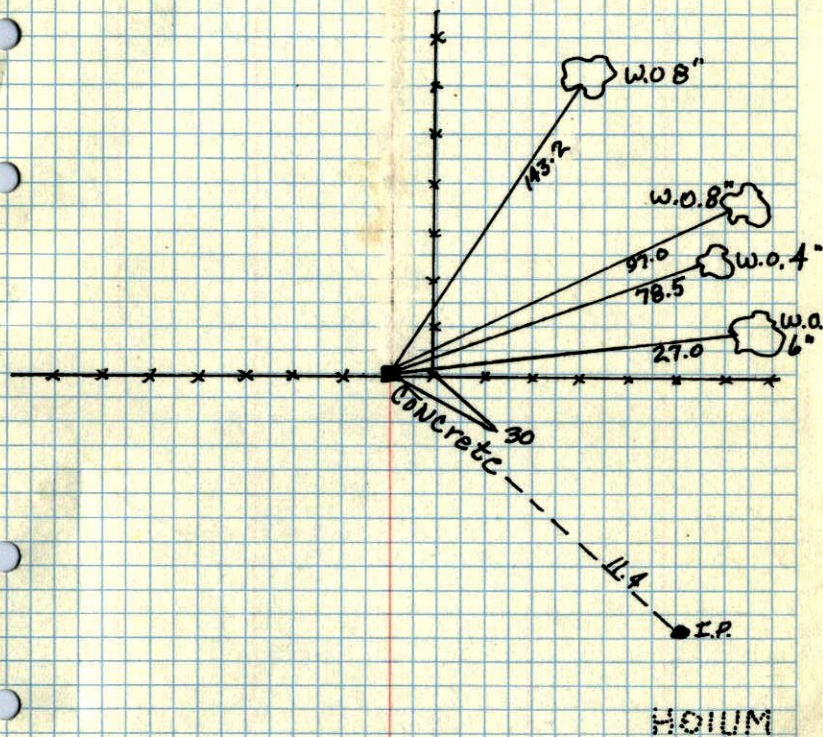


1 Oct 63
71° #2
J. Oliver
E. Madson

36

S 1/4 CORNER OF SEC. 18, T32, R25

CONC. MON.



Nov. 4, 1943
CARTWRIGHT