

CERTIFICATE OF LOCATION OF GOVERNMENT CORNER

County of Anoka

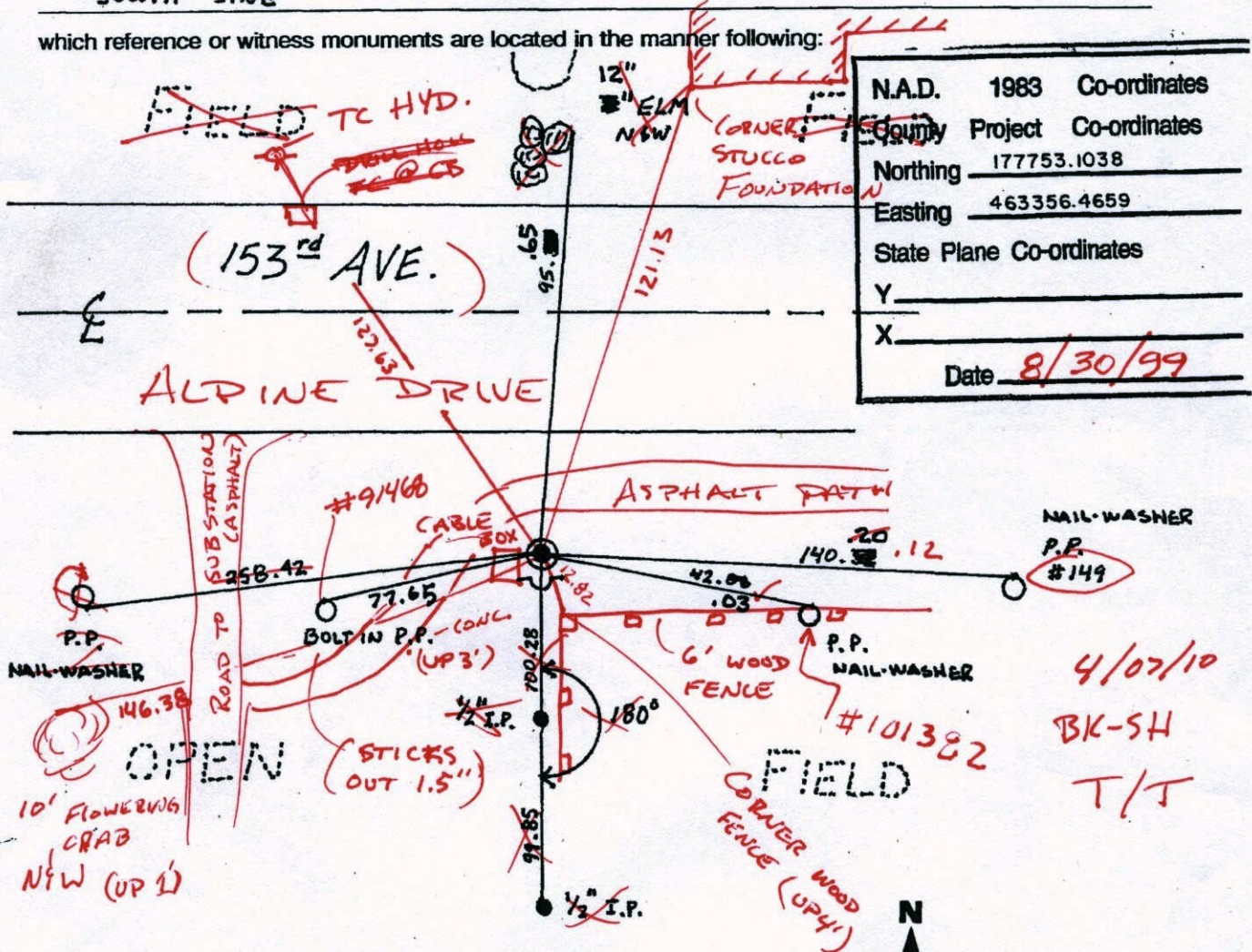
State of Minnesota

EAST QTR. Corner of Sec. 23 Township 32 Range 25

I hereby certify that on the 28 day of AUG, 1959, I found the described corner which was evidenced by GRANITE MONUMENT

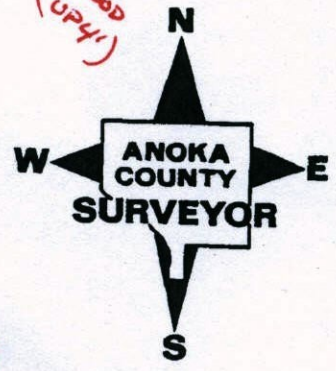
and I further certify that to perpetuate the location of said corner, I did, at the exact location thereof, place a permanent marker consisting of CAST IRON MONUMENT SIGN AND POST ON SOUTH SIDE

which reference or witness monuments are located in the manner following:



N.A.D.	1983	Co-ordinates
County		Project Co-ordinates
Northing	177753.1038	
Easting	463356.4659	
State Plane Co-ordinates		
Y		
X		
Date	8/30/99	

Revised date	Revised date	Revised date
8-19-82		
7-28-85		
6-6-88		
8-30-99		



4/07/10
BK-SH
T/T

CERTIFICATE OF LOCATION OF GOVERNMENT CORNER

County of Anoka

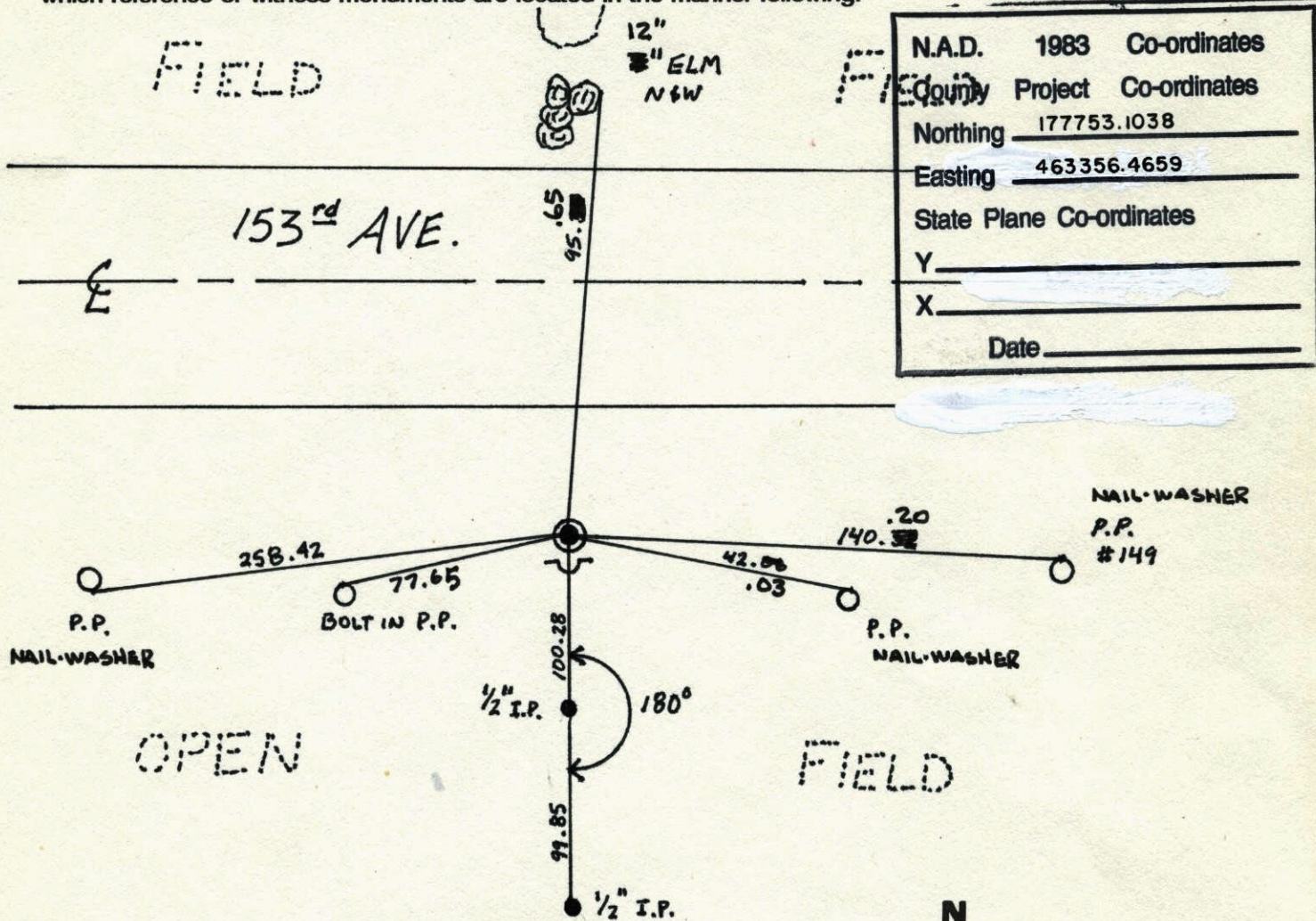
State of Minnesota

EAST QTR. Corner of Sec. 23 Township 32 Range 25

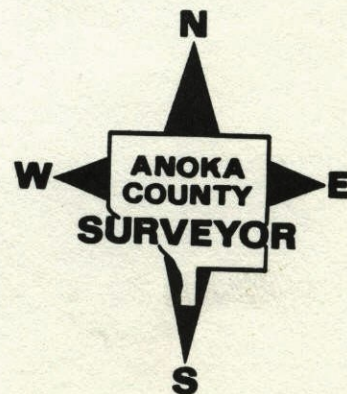
I hereby certify that on the 28 day of AUG, 1959, I found the described corner which was evidenced by GRANITE MONUMENT

and I further certify that to perpetuate the location of said corner, I did, at the exact location thereof, place a permanent marker consisting of CAST IRON MONUMENT SIGN AND POST ON SOUTH SIDE

which reference or witness monuments are located in the manner following:

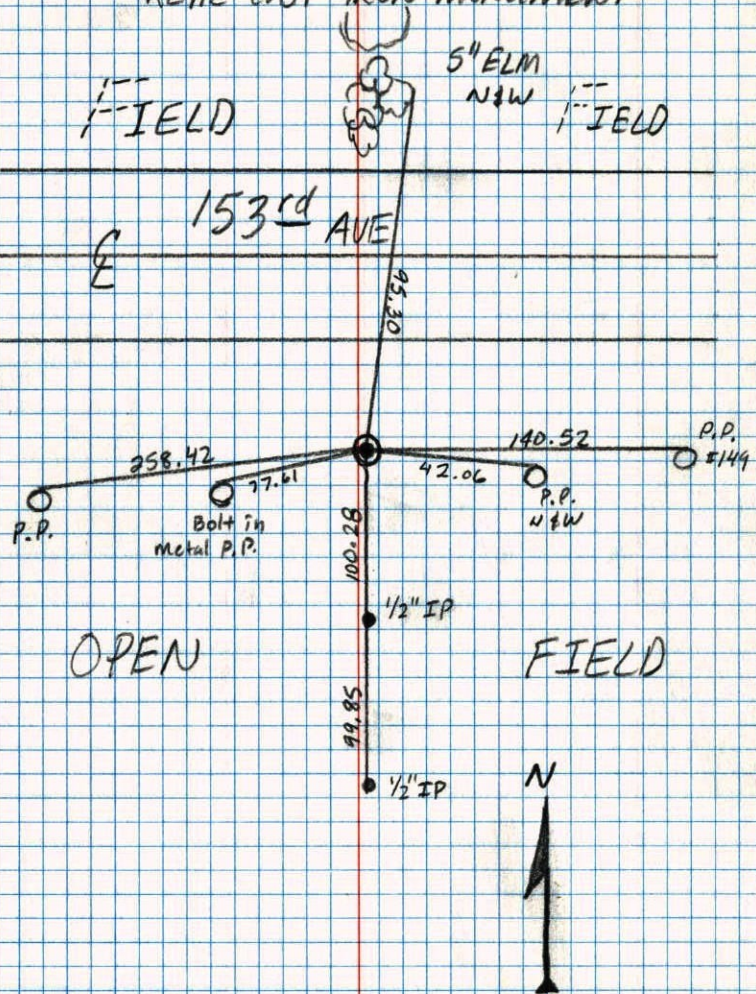


Revised date	Revised date	Revised date
8-19-82		
7-28-85		
6-6-88		
8-30-99		



EAST QTR corner Sec. 23 T32 R25

RETIE CAST IRON MONUMENT

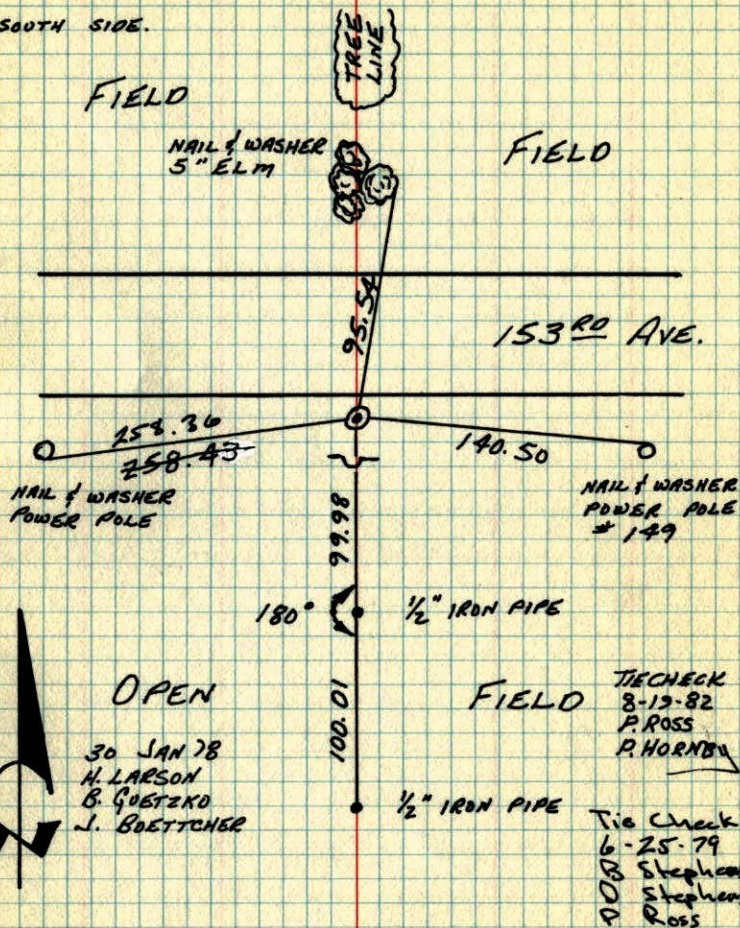


8-11-93 JOSH ANDERSON
JAYME ANDERSON

E 1/4 COR. SEC 23-T32-R25

RETIED CAST IRON MONUMENT SET BY M.O. ANDERSON.

IN PLACE OF GRANITE MONUMENT. SIGN & POST ON SOUTH SIDE.

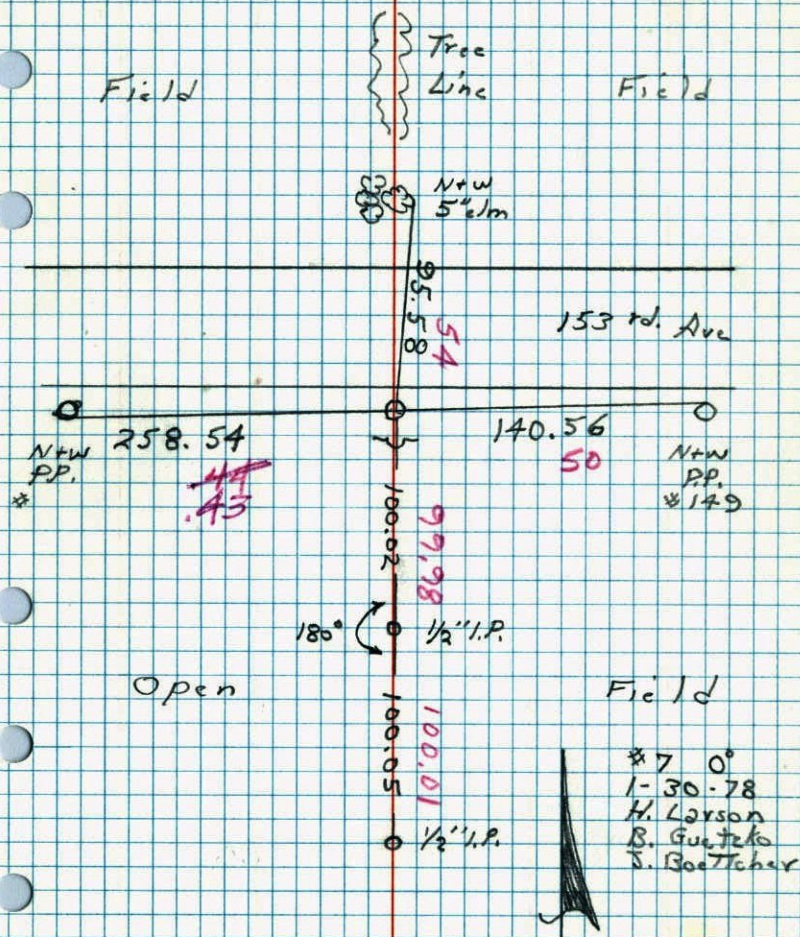


TEMPERATURE CORRECTED
AND HORIZONTALLY
TAPED MEASUREMENTS

ROLAND W. ANDERSON
COUNTY SURVEYOR
ANOKA COUNTY, MINNESOTA

E 1/4 Cor. Section 23 T32 R25

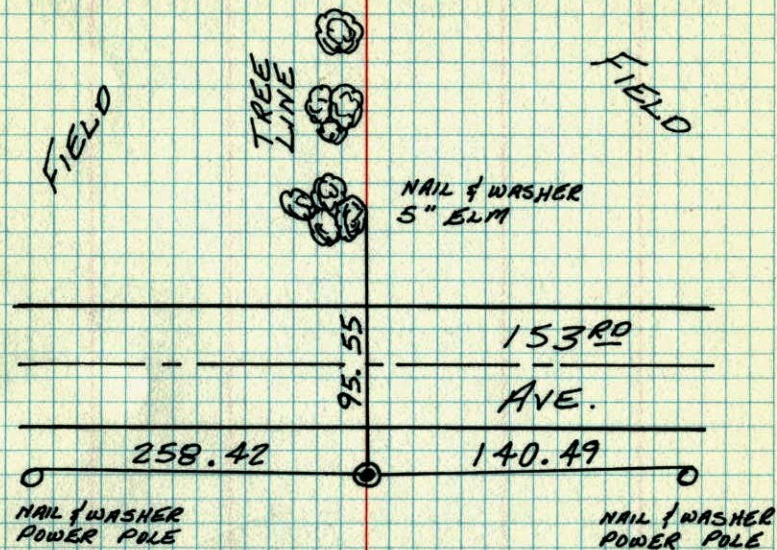
Retied cast iron monument set
by MD Anderson in place of Granite.
Sign a post on South side.



91

E 1/4 COR. SEC. 23-T32-R25

TIED CAST IRON MONUMENT SET BY
M. D. ANDERSON IN PLACE OF GRANITE.
SIGN AND POST ON SOUTH SIDE.

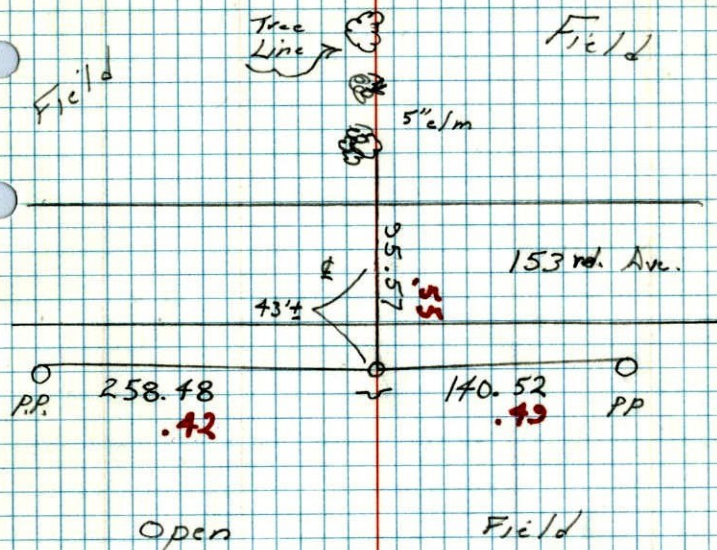


TEMPERATURE CORRECTED
AND HORIZONTALLY
TAPED MEASUREMENTS

ROLAND W. ANDERSON
COUNTY SURVEYOR
ANOKA COUNTY, MINNESOTA

E 1/4 Cor. Sec. 23 T32 R25

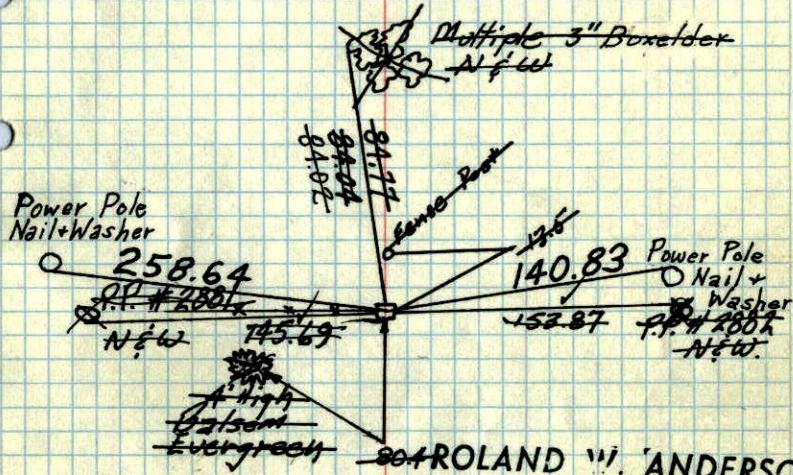
Tied cast iron monument set by
M.D. Anderson in place of Granite
sign + post on S. side.



#7 30°
11-10-77
H. Larson
B. Gutschke
S. Boetcher

E 1/4 Corn. Sec. 23, T32, R25

Granite Mon.
up 0.5'



Tie Check
June 19, 1969
D. Powell
R. Olson
B. Olson

Tie Check
8/8/72
B. Olson
J. Boetcher
R. Bauer

TIE CHECK
7-6-76
G. ADAMS
B. SANNEURO
S. BRIEN

ROLAND W. ANDERSON
COUNTY SURVEYOR
ANOKA COUNTY, MINNESOTA

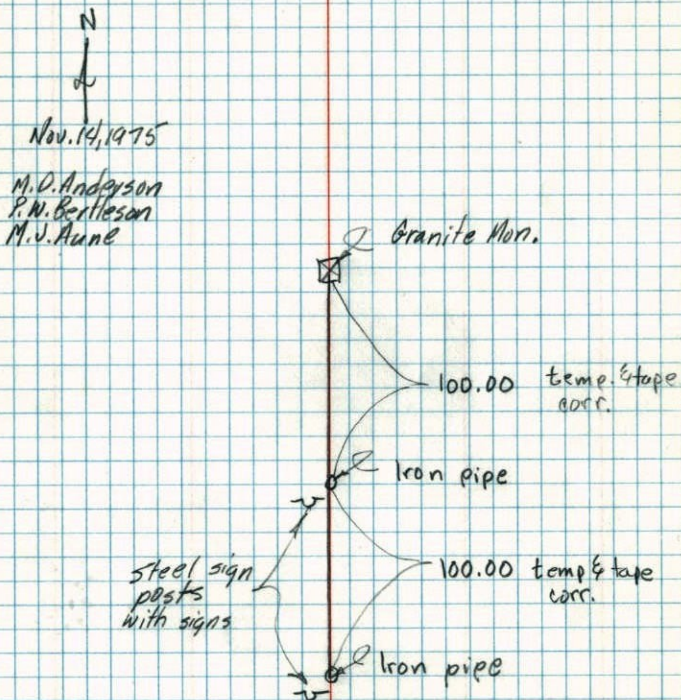
Bill Rogers assisting
Aug 28, 1959

Retie 8/11/64
M. D. Anderson
J. Dunlop

Temp. transit ties to

E. 1/4 Cor. Sec. 23-T32-R25

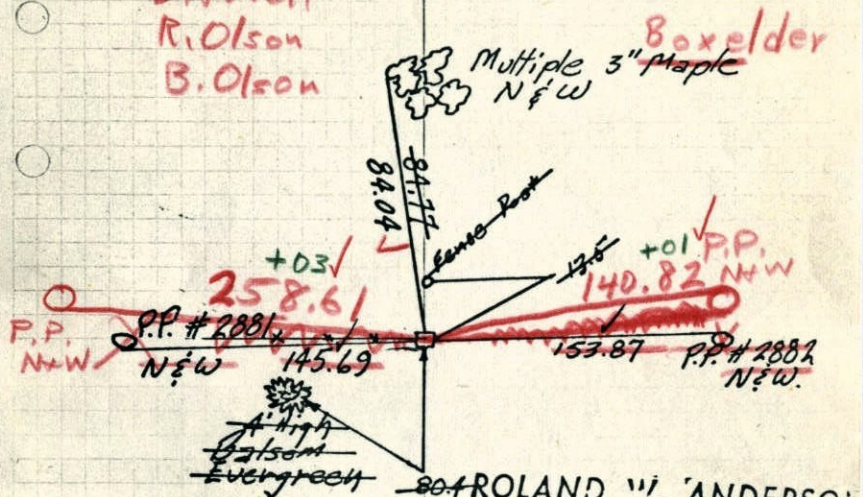
Cor. may not be removed



E 1/4 Cor. Sec. 23, T32, R25

Granite Mon.
up 1.0
0.5' ±

6/19/69
#6-680
D. Powell
R. Olson
B. Olson



ROLAND W. ANDERSON
COUNTY SURVEYOR
ANOKA COUNTY, MINNESOTA

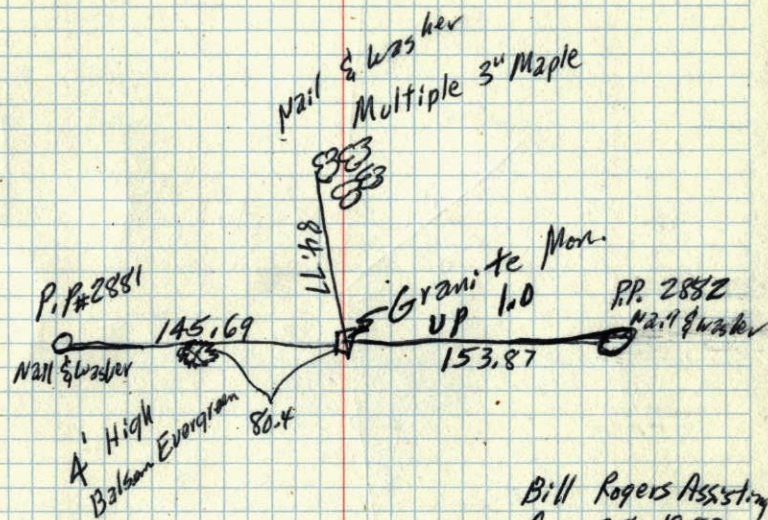
Bill Rogers assisting

Aug 28, 1959

Retie 8/11/64

M. D. Anderson
J. Dunlap

E 1/4 Corn Sec. 23, T32, R25



Bill Rogers Assisting
Aug. 28, 1959