

CERTIFICATE OF LOCATION OF GOVERNMENT CORNER

County of Anoka

State of Minnesota

EAST 1/4 Corner of Sec. 24 Township 32 Range 25

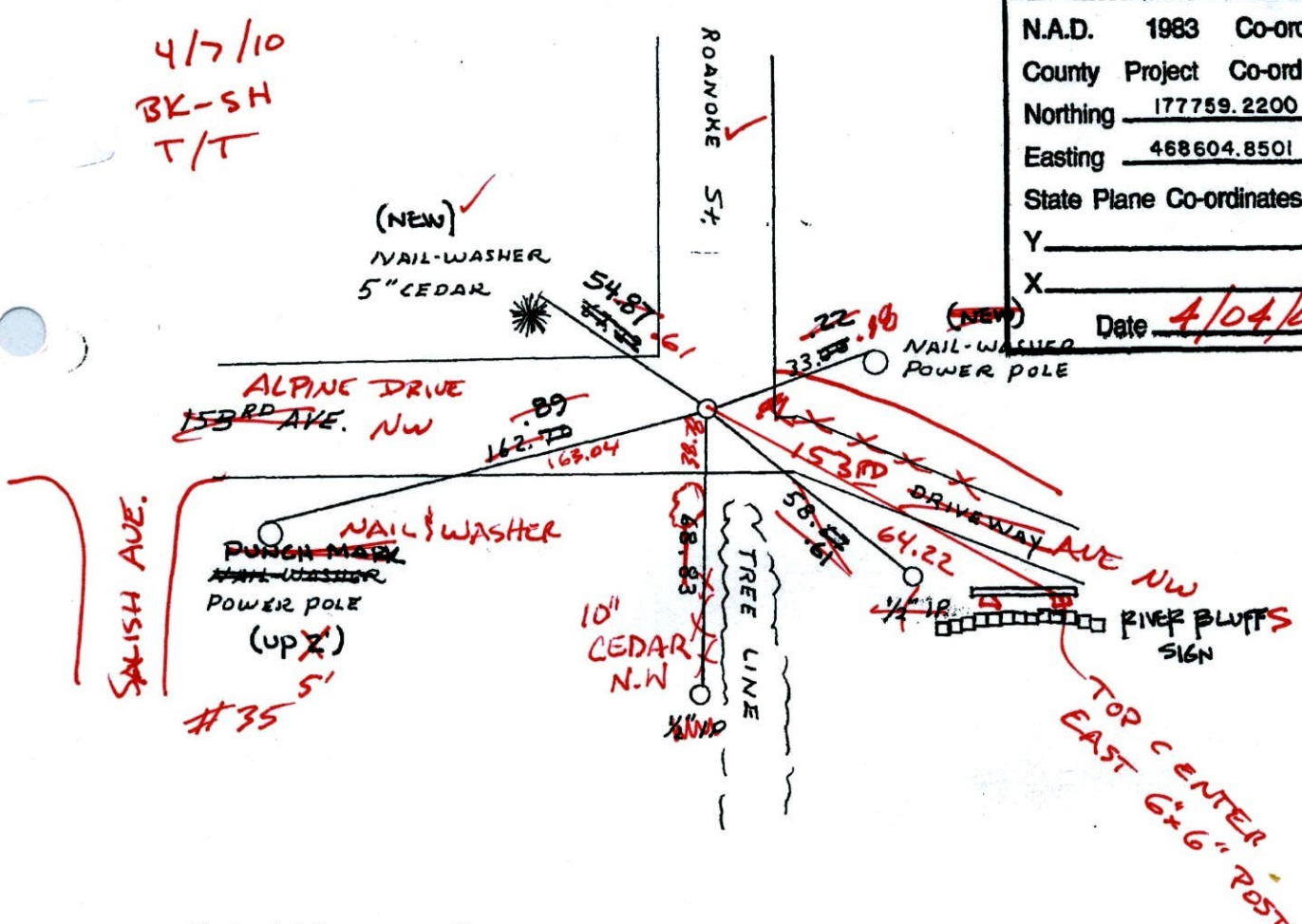
I hereby certify that on the 31 day of AUGUST, 1959, I found the described corner which was evidenced by GRANITE MONUMENT

and I further certify that to perpetuate the location of said corner, I did, at the exact location thereof, place a permanent marker consisting of P.K. CAST IRON MONUMENT (FLUSH)

which reference or witness monuments are located in the manner following:

4/7/10
BK-SH
T/T

| | | |
|--------------------------|--------------------|--------------|
| N.A.D. | 1983 | Co-ordinates |
| County | Project | Co-ordinates |
| Northing | <u>177759.2200</u> | |
| Easting | <u>468604.8501</u> | |
| State Plane Co-ordinates | | |
| Y | _____ | |
| X | _____ | |
| Date | <u>4/04/00</u> | |



| Revised date | By |
|--------------|-----------|
| 7-26-85 | D. ROSS |
| 4-14-87 | H. LARSON |
| 1-20-88 | H. LARSON |
| 8-10-93 | |
| 4-4-00 | |
| | |
| | |

Minnesota State Plane Coordinates
South Zone

Y _____ X _____

County Surveyor _____ Date _____

Registered Land Surveyor No. _____

CERTIFICATE OF LOCATION OF GOVERNMENT CORNER

County of Anoka

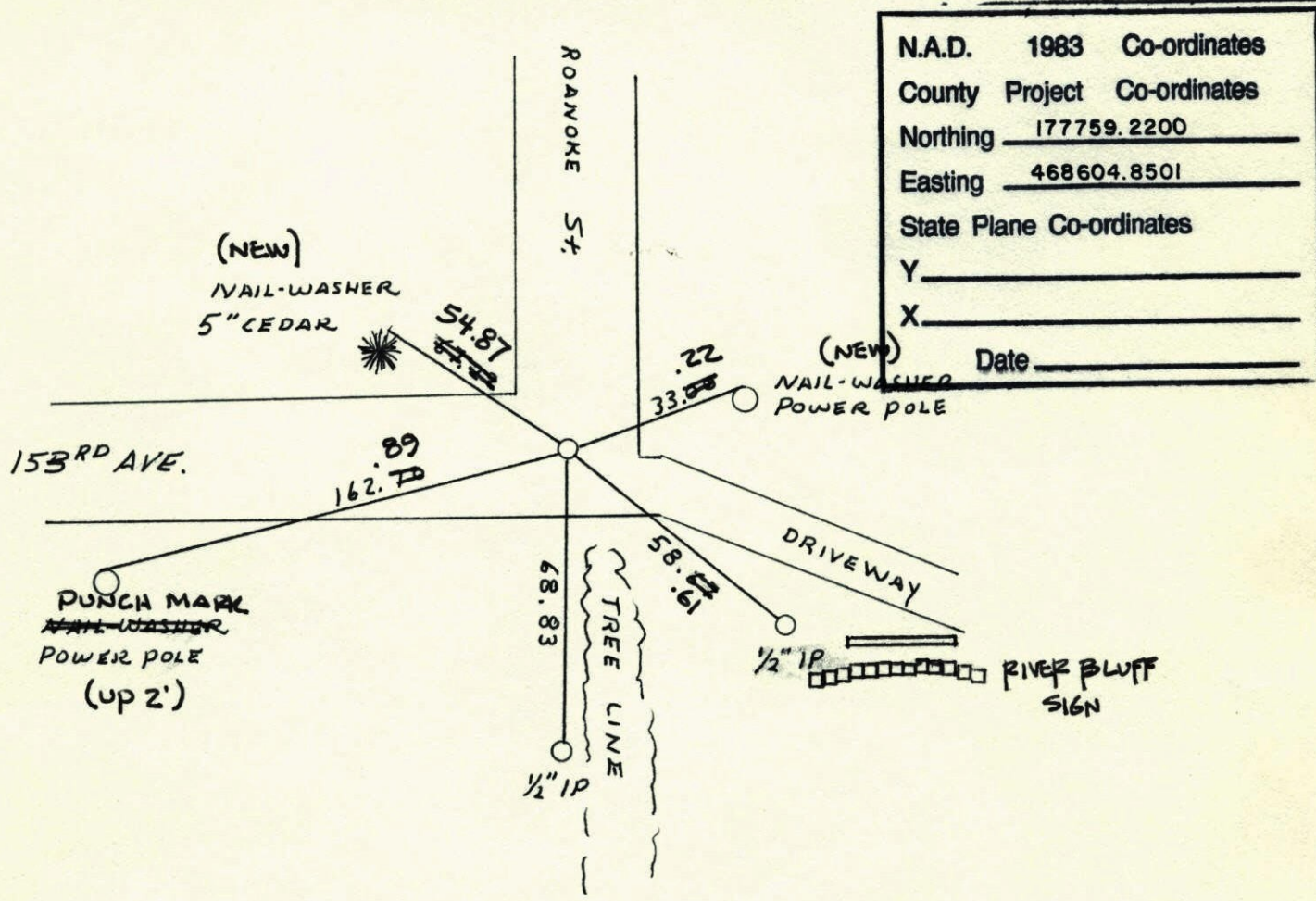
State of Minnesota

EAST 1/4 Corner of Sec. 24 Township 32 Range 25

I hereby certify that on the 31 day of AUGUST, 1952, I found the described corner which was evidenced by GRANITE MONUMENT

and I further certify that to perpetuate the location of said corner, I did, at the exact location thereof, place a permanent marker consisting of P.K. CAST IRON MONUMENT

which reference or witness monuments are located in the manner following:



| | | |
|--------------------------|---------|--------------------|
| N.A.D. | 1983 | Co-ordinates |
| County | Project | Co-ordinates |
| Northing | | <u>177759.2200</u> |
| Easting | | <u>468604.8501</u> |
| State Plane Co-ordinates | | |
| Y | | _____ |
| X | | _____ |
| Date | | _____ |

| Revised date |
|--------------|
| 7-26-85 |
| 4-14-87 |
| 1-20-88 |
| 8-10-93 |
| 4-4-00 |
| |
| |

| By |
|-----------|
| D. ROSS |
| H. LARSON |
| H. LARSON |
| |
| |
| |

Minnesota State Plane Coordinates
South Zone
 Y _____ X _____
 _____ , _____
 County Surveyor Date
 Registered Land Surveyor No. _____

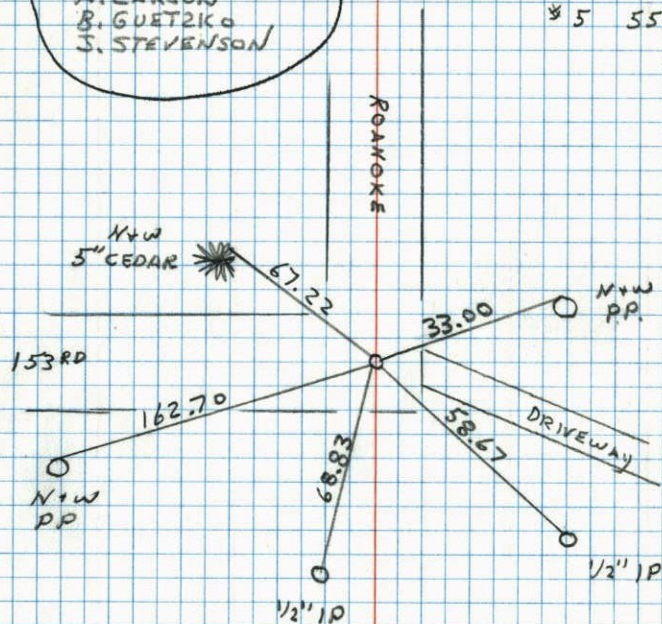
EAST 1/4 CORNER SECTION 24 T32 R25

RETIED AND REMOVED CAST IRON FOR

CONSTRUCTION

SET PK 1-20-88
H. LARSON
B. GUETZKO
J. STEVENSON

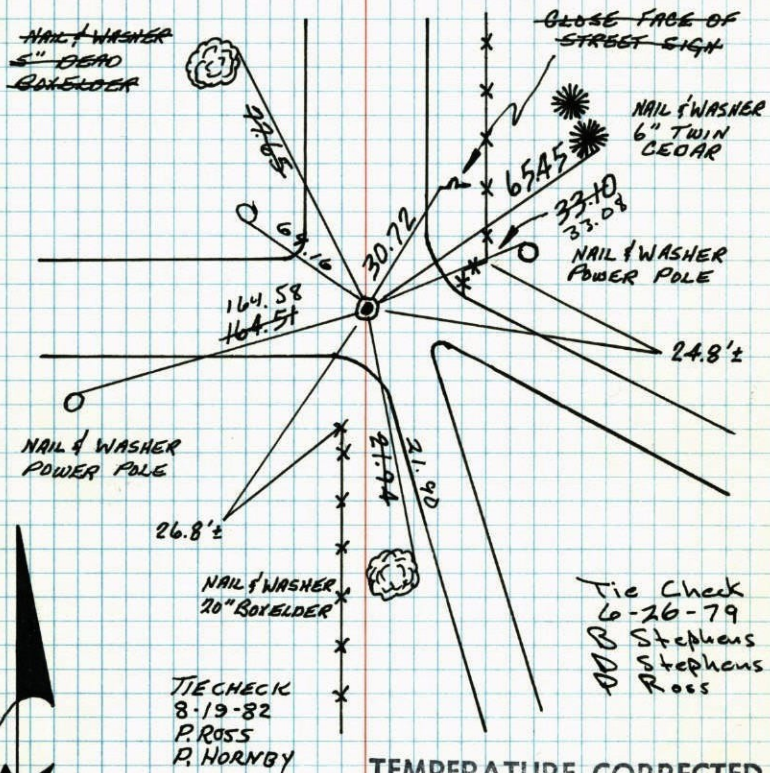
4-14-87
H. LARSON
B. GUETZKO
85 55°



E 1/4 COR. SEC. 24, T32, R25

GRANITE MONUMENT FLUSH BROKEN OFF

3/4" IRON PIPE ON NORTH SIDE. 31 AUG 59 R.W.A.
HENRY BROM JR.
REPLACED WITH CAST IRON ASSISTING
MONUMENT 8/8/72



RETIED
22 Jul 76
M.D. ANDERSON
P.W. BERTLESON
M.J. AUNE

TEMPERATURE CORRECTED
AND HORIZONTALLY
TAPED MEASUREMENTS

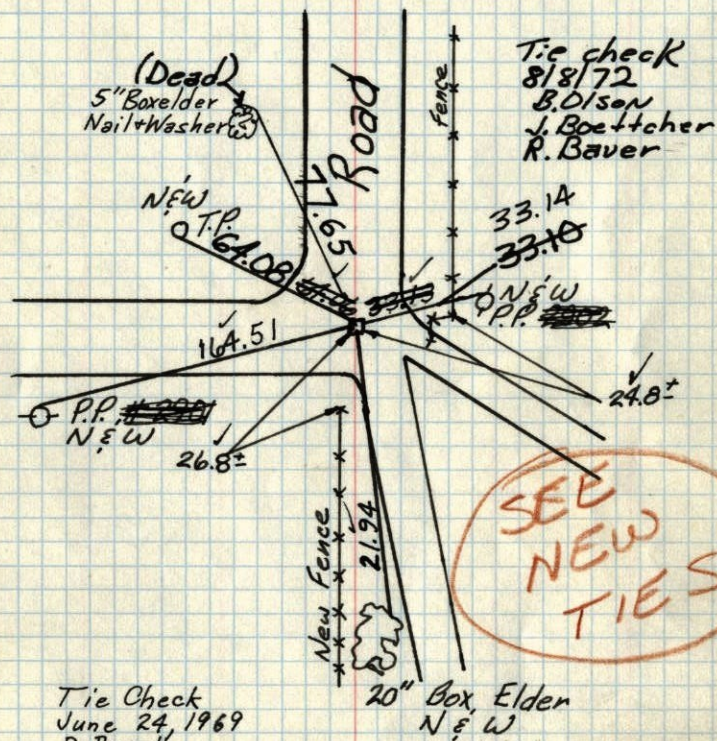
ROLAND W. ANDERSON
COUNTY SURVEYOR
ANOKA COUNTY, MINNESOTA

E 1/4 Cor. Sec 24, T32, R25

Granite Mon. flush. Top broken off

3/4" Iron Pipe on North side.

Replaced with Cast Iron Monument 8/8/72



Tie Check
June 24, 1969
D. Powell
R. Olson
B. Olson

TIE CHECK
7-6-76
G. ADAMS
B. SANNEVED
S. BRIEN

ROLAND W. ANDERSON
COUNTY SURVEYOR
ANOKA COUNTY, MINNESOTA

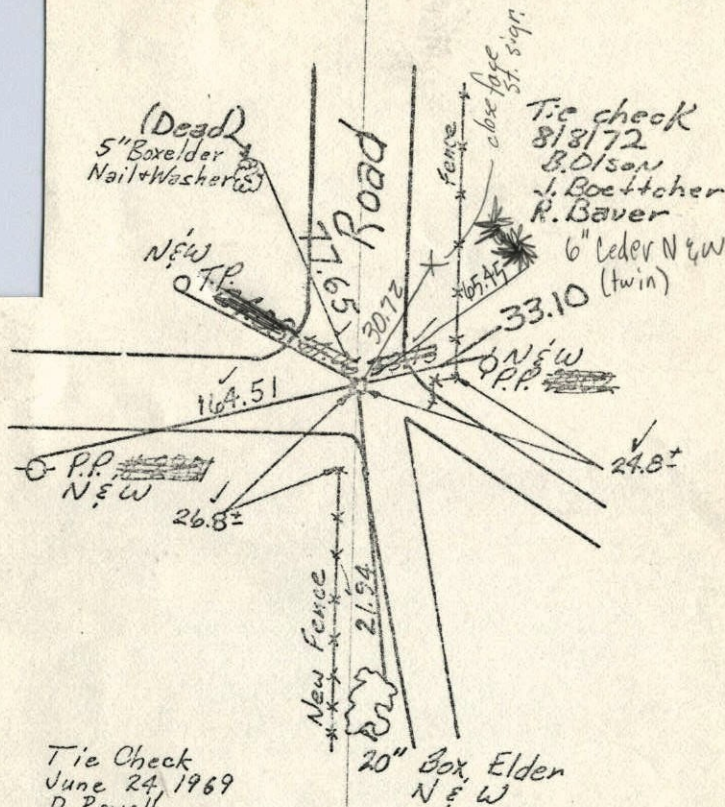
Retie 8/11/64 Henry Brom, Jr.
M.D. Anderson assisting
J. Dunlop Aug. 31, 1959

E 1/4 Cor. Sec 24, T32, R25

Granite Mon. flush. Top broken off

3/4" Iron Pipe on North side.

Replaced with Cast Iron Monument 8/8/72



Tie Check
June 24, 1969
D. Powell
R. Olson
B. Olson

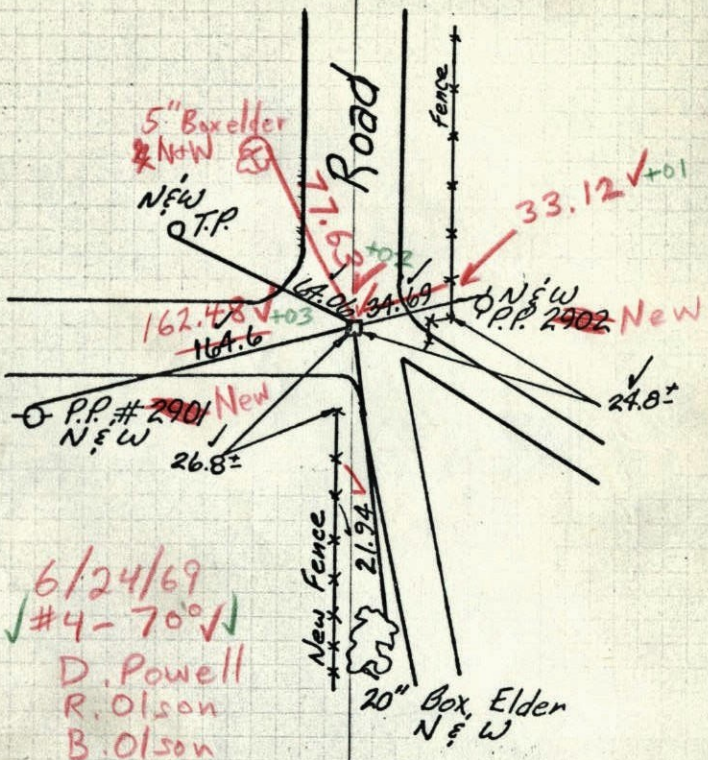
ROLAND W. ANDERSON
COUNTY SURVEYOR
ANOKA COUNTY, MINNESOTA

Retie 8/11/64 Henry Brom, Jr.
M.D. Anderson assisting
J. Dunlop Aug. 31, 1959

E 1/4 Cor. Sec 24, T32, R25

Granite Mon. flush. Top broken off

3/4" I.P. on N. side.

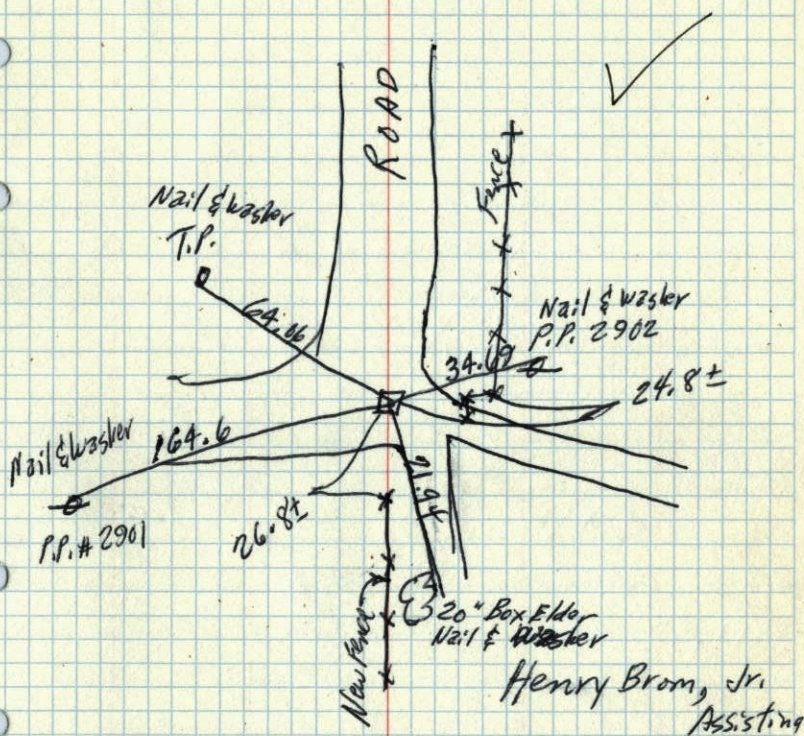


6/24/69
 \checkmark #4-70 \checkmark
 D. Powell
 R. Olson
 B. Olson

ROLAND W. ANDERSON
 COUNTY SURVEYOR
 ANOKA COUNTY, MINNESOTA

Retie 8/11/64 Henry Brom, Jr.
 M.D. Anderson assisting
 J. Dunlop Aug. 31, 1959

E 1/4 Corn. Sec. 24, T32, R25



Henry Brom, Jr.
 Assisting
 Aug. 31, 1959