

CERTIFICATE OF LOCATION OF GOVERNMENT CORNER

County of Anoka

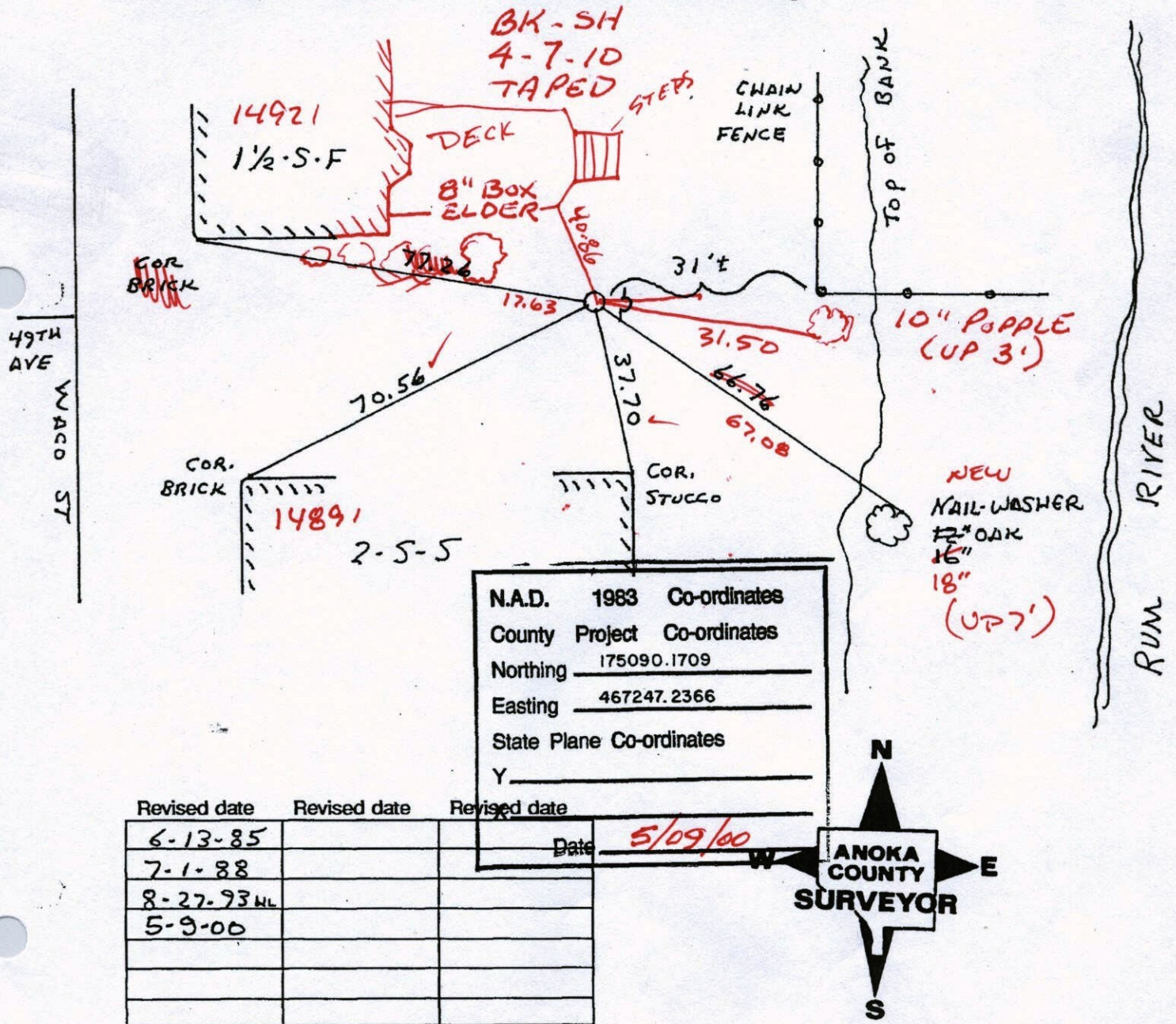
State of Minnesota

W.C. ON SOUTH Corner of Sec. 24 Township 32 Range 25
 LINE OF SE 1/4

I hereby certify that on the 11th day of JULY, 19 63, I found the described corner which was evidenced by AREA RESURVEY

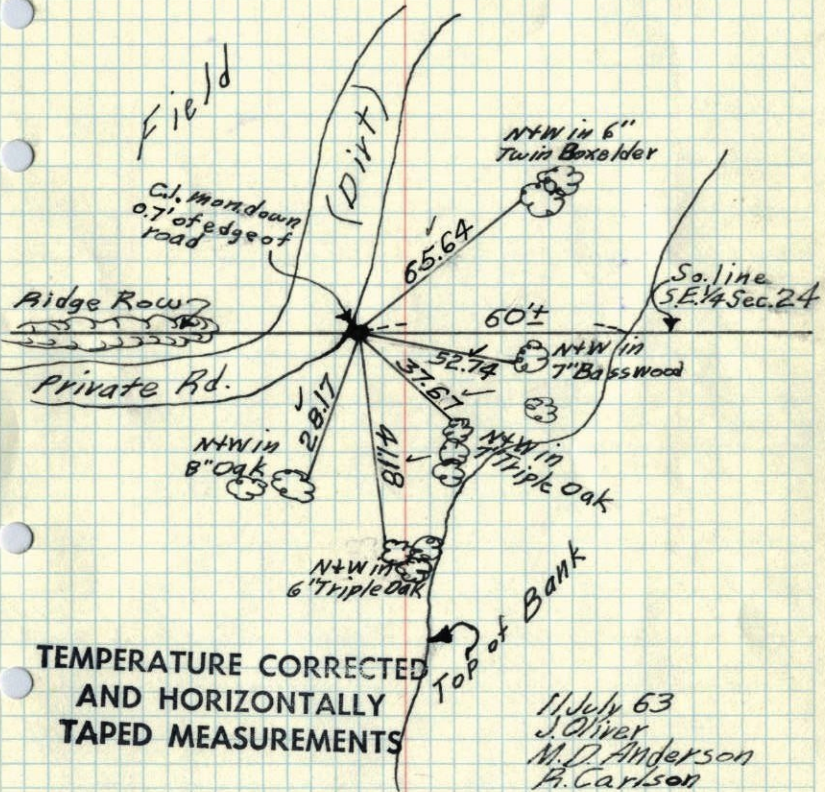
and I further certify that to perpetuate the location of said corner, I did, at the exact location thereof, place a permanent marker consisting of CAST IRON MONUMENT SIGN AND POST ON EAST SIDE (DOWN 1.5'±)

which reference or witness monuments are located in the manner following:



W.C. on So. line of SE 1/4 of Sec. 24, T. 32, R. 25
 1282. E. of So. 1/4 Cpt.
 Set cast iron mon. from resurvey

Tie Check
 June 24, 1969
 D. Powell
 R. Olson
 B. Olson



TEMPERATURE CORRECTED
 AND HORIZONTALLY
 TAPED MEASUREMENTS

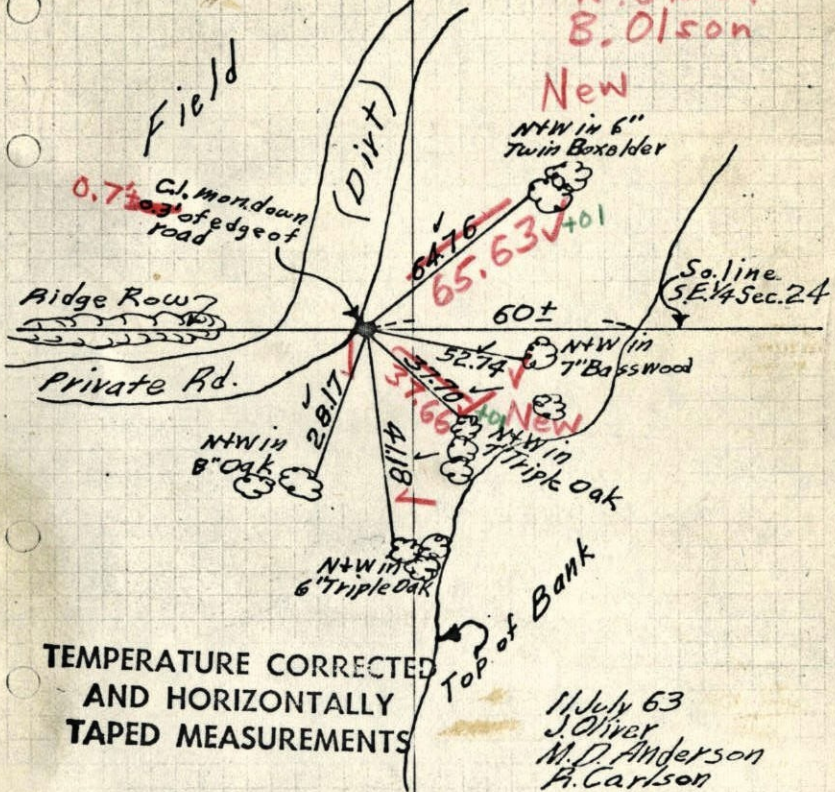
11 July 63
 J. Oliver
 M. D. Anderson
 R. Carlson

Retie 8/11/64
 M. D. Anderson
 J. Dunlop

ROLAND W. ANDERSON
 COUNTY SURVEYOR
 ANOKA COUNTY, MINNESOTA

W.C. on So. line of SE 1/4 of Sec. 24, T. 32, R. 25
 1282. E. of So. 1/4 Cpt.
 Set cast iron mon. from resurvey

6/24/69
 #4-720 ✓
 D. Powell
 R. Olson
 B. Olson



TEMPERATURE CORRECTED
 AND HORIZONTALLY
 TAPED MEASUREMENTS

11 July 63
 J. Oliver
 M. D. Anderson
 R. Carlson

Retie 8/11/64
 M. D. Anderson
 J. Dunlop

ROLAND W. ANDERSON
 COUNTY SURVEYOR
 ANOKA COUNTY, MINNESOTA

W.C. on So. line of SE 1/4 of P
 Sec. 24, T32, R25, 1282' E. of
 So. 1/4 Cor. Set cast Iron
 Monument From Resurvey

11 July 63
 85° #2
 J. Oliver
 M.D. Anderson
 R. Carlson

