

# CERTIFICATE OF LOCATION OF GOVERNMENT CORNER

County of Anoka

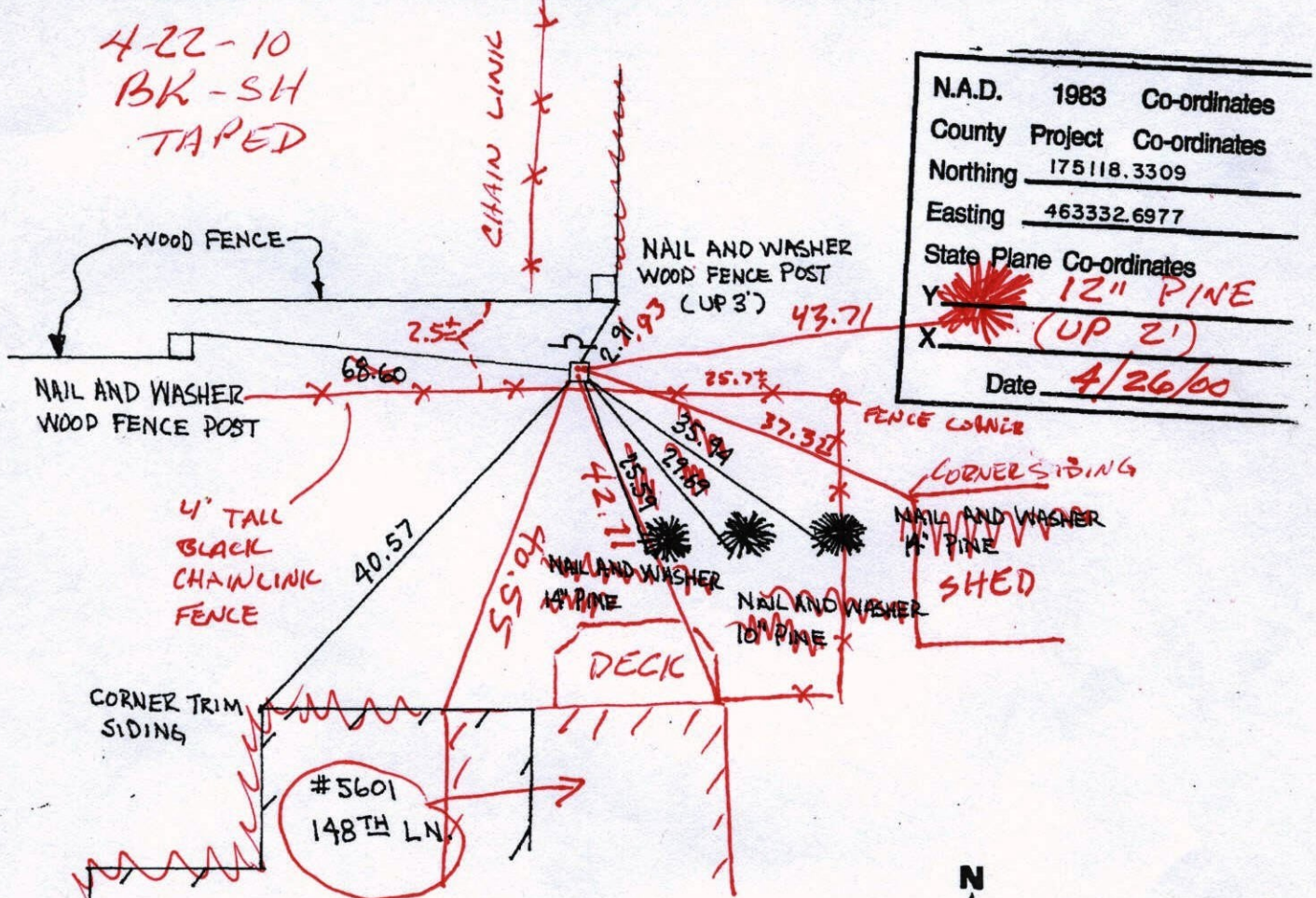
State of Minnesota

NORTHWEST Corner of Sec. 25 Township 32 Range 25

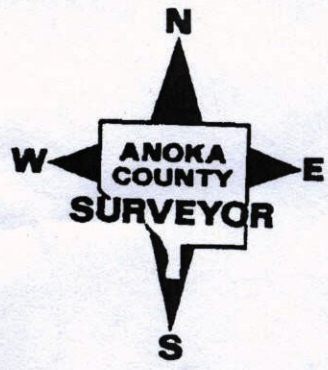
I hereby certify that on the 28<sup>TH</sup> day of JULY, 19 59, I found the described corner which was evidenced by GRANITE MONUMENT

and I further certify that to perpetuate the location of said corner, I did, at the exact location thereof, place a permanent marker consisting of GRANITE MONUMENT SIGN AND POST ON NORTH SIDE

which reference or witness monuments are located in the manner following:



Revised date	Revised date	Revised date
8-17-85		
7-11-88		
8-16-93		
5-8-96		
4-26-00		





# CERTIFICATE OF LOCATION OF GOVERNMENT CORNER

County of Anoka

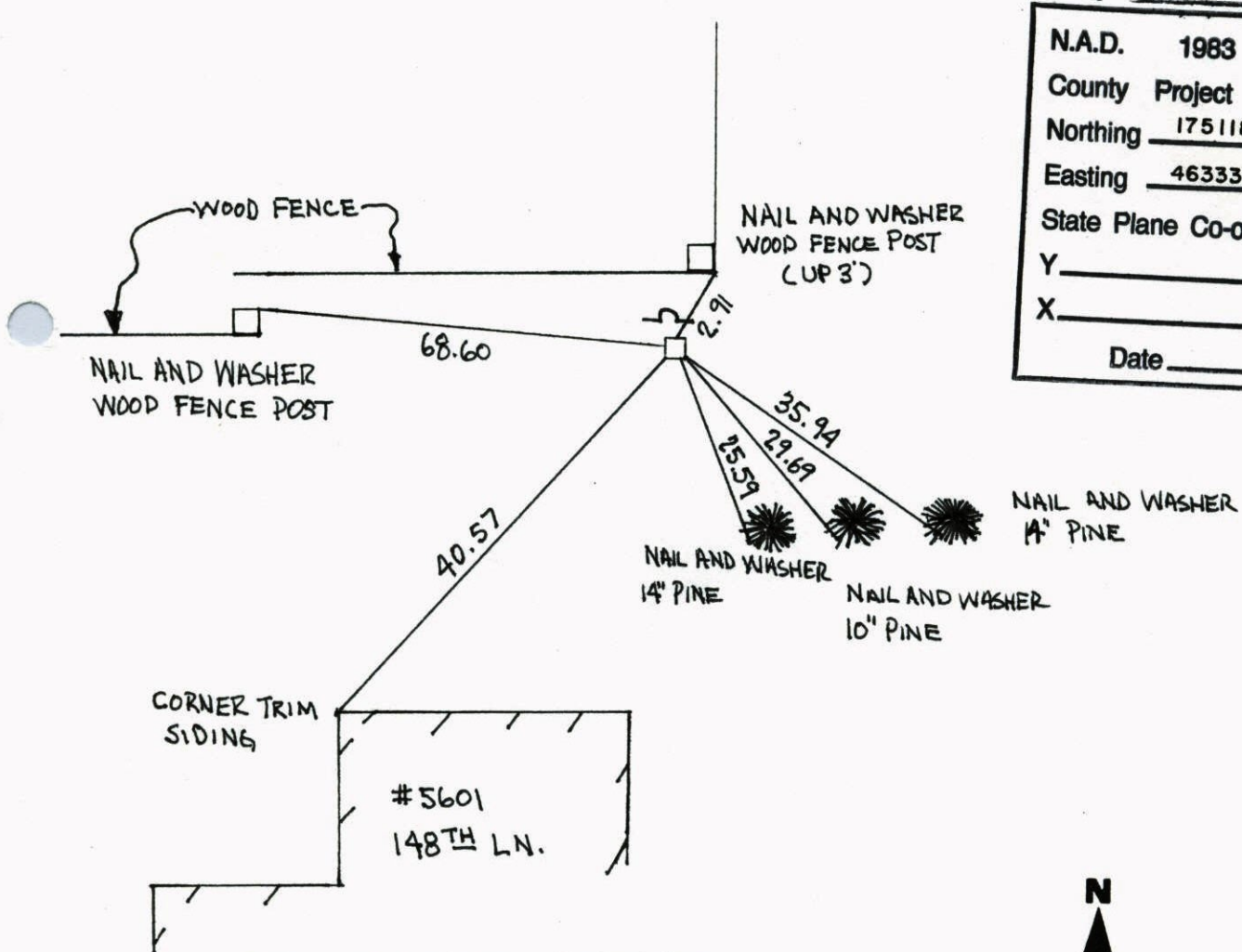
State of Minnesota

NORTHWEST Corner of Sec. 25 Township 32 Range 25

I hereby certify that on the 28<sup>TH</sup> day of JULY, 19 59, I found the described corner which was evidenced by GRANITE MONUMENT

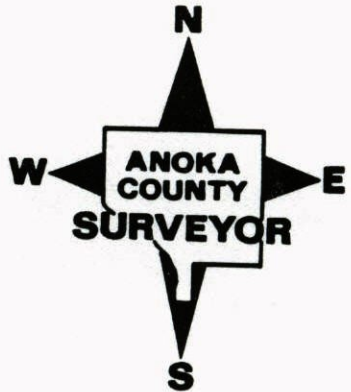
and I further certify that to perpetuate the location of said corner, I did, at the exact location thereof, place a permanent marker consisting of GRANITE MONUMENT SIGN AND POST ON NORTH SIDE

which reference or witness monuments are located in the manner following:



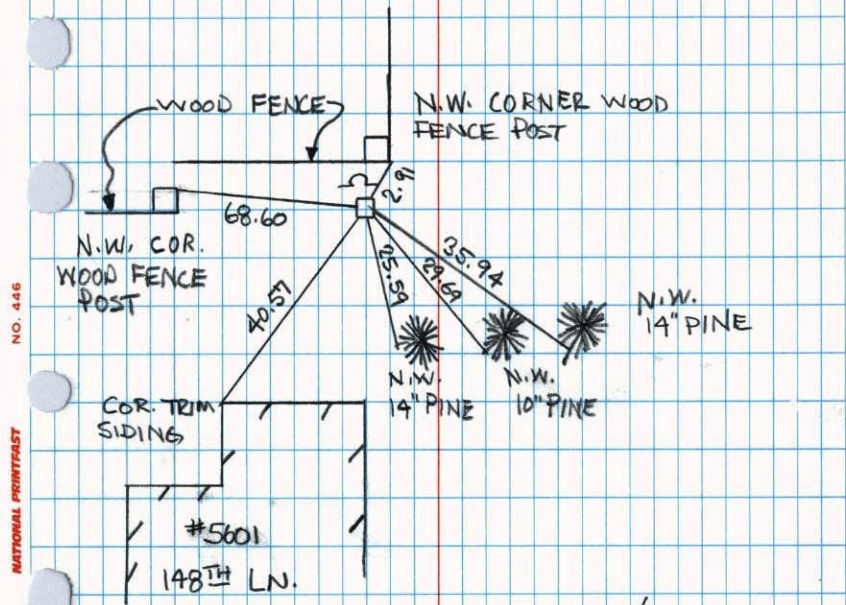
N.A.D.	1983	Co-ordinates
County	Project	Co-ordinates
Northing	175118.3309	
Easting	463332.6977	
State Plane Co-ordinates		
Y	_____	
X	_____	
Date	_____	

Revised date	Revised date	Revised date
8-17-85		
7-11-88		
8-16-93		
5-8-96		
4-26-00		





NORTHWEST CORNER SEC. 25, T. 32, R. 25  
 RETIED GRANITE MONUMENT DURING  
 G.P.S.

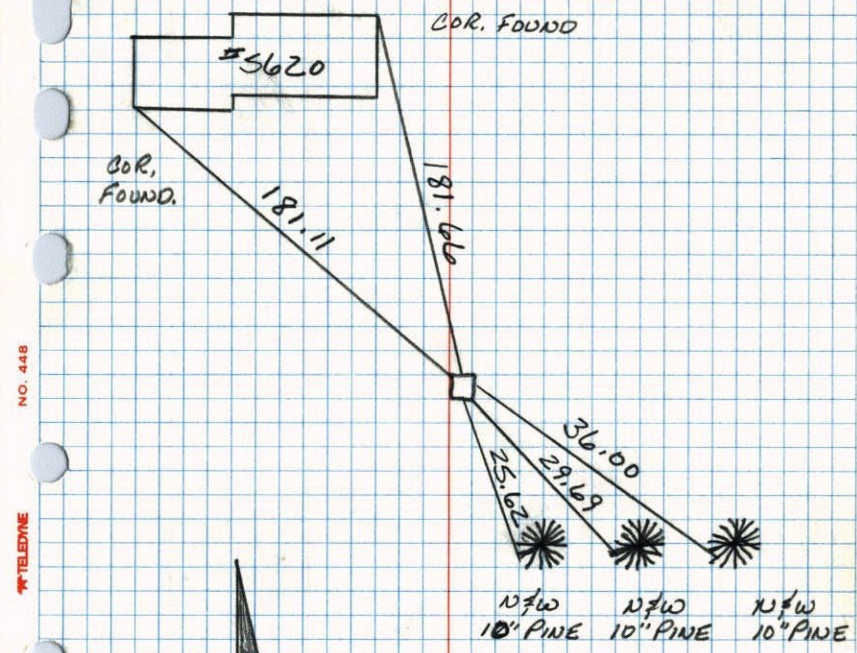


NO. 446  
 NATIONAL PRINTING

4-26-00  
 J. SIMMER  
 T. SCHWAB



NW CORNER SEC 25 T32 R25  
 RETIED GRANITE MONUMENT.  
149TH AVE NW



NO. 448  
 TELETYPE

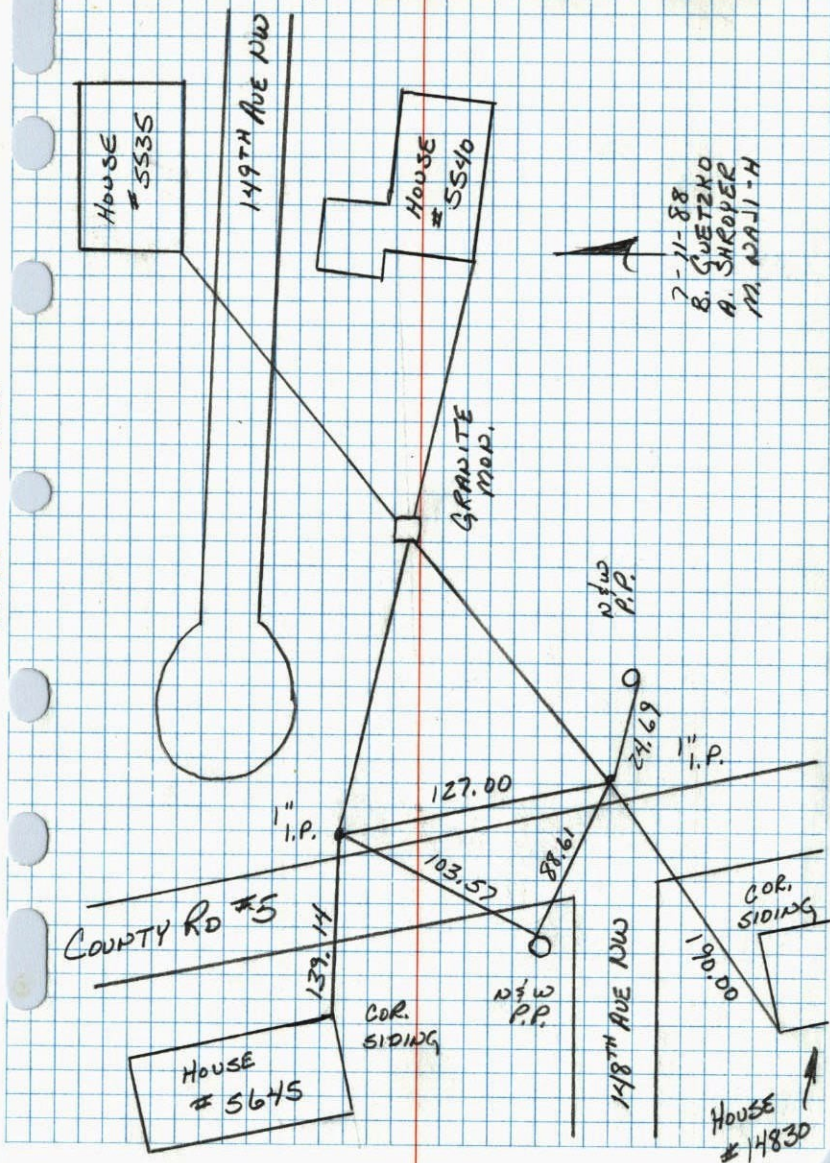
7-11-88  
 B. GUETZKO  
 A. SHROYER  
 M. NALL-H  
 20° 200' TAPE





NW CORNER SEC 25 T32 R25

RETIED GRANITE MONUMENT.

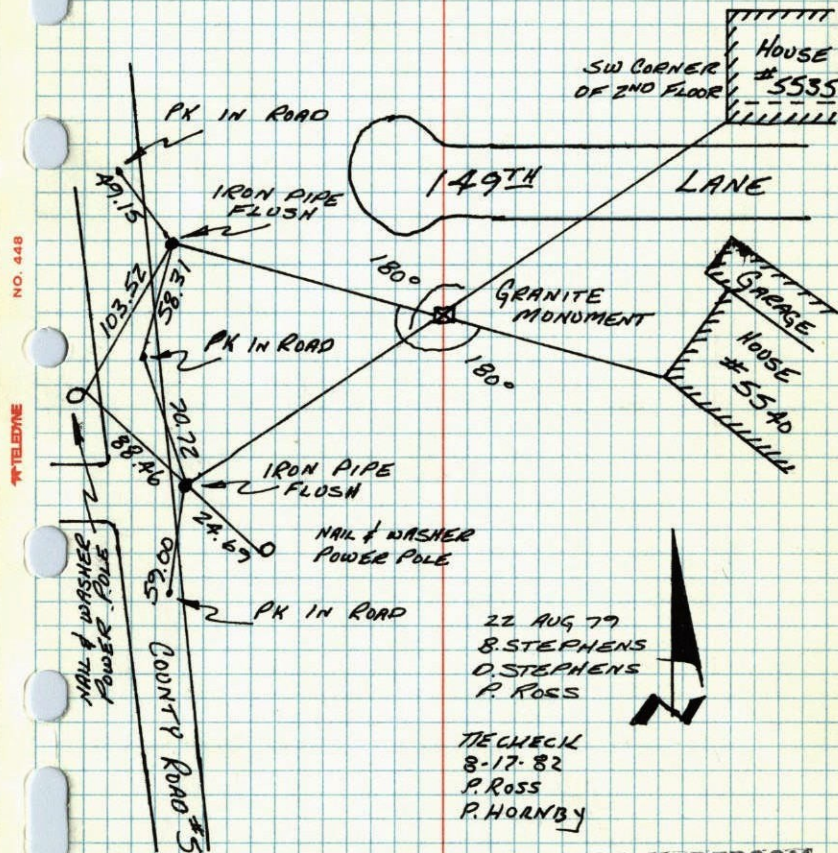


7-11-88  
B. GWETZKO  
A. SHROPER  
M. ADAMI-H

N.W. CORNER SECTION 25-T32-R25

SET TRANSIT TIES FROM GRANITE MONUMENT. 1" ANGLE IRONS ON NORTH AND SOUTH SIDES OF MONUMENT. ANGLE IRONS UP 3".

7/28/59  
R.W. Anderson  
D. Potter



22 AUG 79  
B. STEPHENS  
D. STEPHENS  
P. ROSS

TIE CHECK  
8-17-82  
P. ROSS  
P. HORNBY

TEMPERATURE CORRECTED  
AND HORIZONTALLY  
TAPED MEASUREMENTS

ROLAND W. ANDERSON  
COUNTY SURVEYOR  
ANOKA COUNTY, MINNESOTA



N.W. Corn. Sec. 25, T32, R25

Set Transit ties from granite mon.  
1" angle irons on N & S side of mon, both  
up 3'±.

96

8-22-79  
B. Stephens  
P. Ross  
7082



House  
5535 →  
STANZ

SW cor.  
of 2nd floor

149th Lane

House  
Garage

5540  
30NA

PK. in Road

49.15

Iron pipe  
Flush

Granite mon.  
Flush

Iron pipe flush

AP.  
New

88.46

2569

P.R.  
New

PK. in road

Co.

NO. 448

TELEPHONE

96

NW Corn Sec. 25, T32, R25

1" Angle Post on North side up 3.5'±.

1" Angle Post on South side up 3.0'±.

CHECK  
NEW  
TIE  
BOOK

Granite  
Flush

15'±  
2.0'±

Checked  
June 30, 1969  
R. A. Olson  
B. N. Olson

7/28/59

Dennis Patter Assisting

Checked  
8/8/72  
B. Olson  
J. Goetcheer  
K. Bauer

ROLAND W. ANDERSON  
COUNTY SURVEYOR  
ANOKA COUNTY, MINNESOTA

TIE CHECK  
7-6-76  
G. ADAMS  
B. SANDERSON  
S. BRIEN

Retie 8/11/64

M. D. Anderson  
J. Dunlop



X

NW Corn Sec. 25, T32, R25

Found 2, 1" L Posts

One on N. Side Granite up 3.5"  
One on S. Side " up 3.0"

Granite Mon.  
Flush

15'±

7/28/59

Dennis Potter Assisting

ROLAND W. ANDERSON  
COUNTY SURVEYOR  
ANOKA COUNTY, MINNESOTA

6-30-69

R.A. Olson

B.M. Olson

Retie 8/11/64

M.D. Anderson  
J. Dunlop