



# CERTIFICATE OF LOCATION OF GOVERNMENT CORNER

County of Anoka

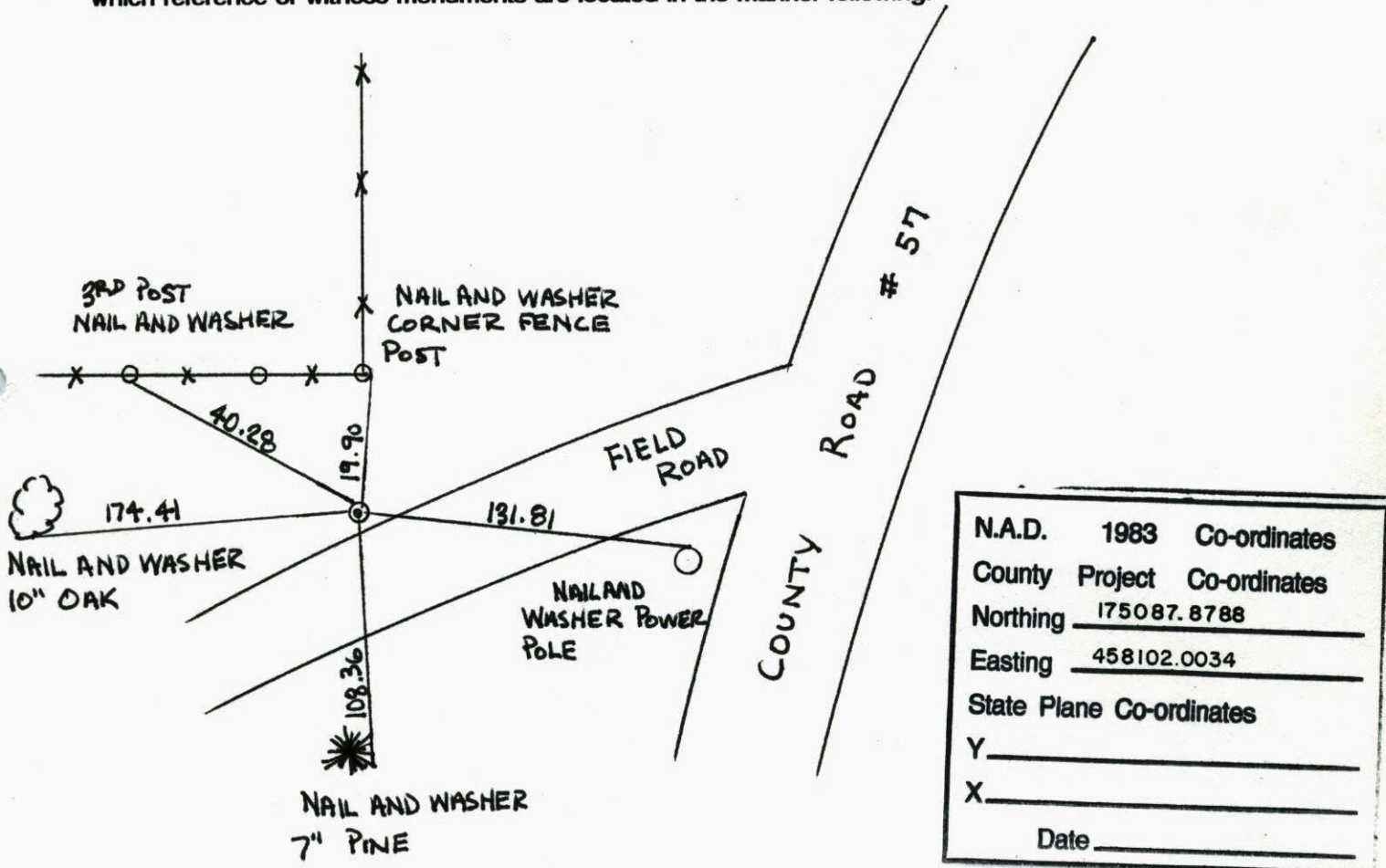
State of Minnesota

NORTHWEST Corner of Sec. 26 Township 32 Range 25

I hereby certify that on the 9 day of FEBRUARY, 1960, I found the described corner which was evidenced by GRANITE MON.

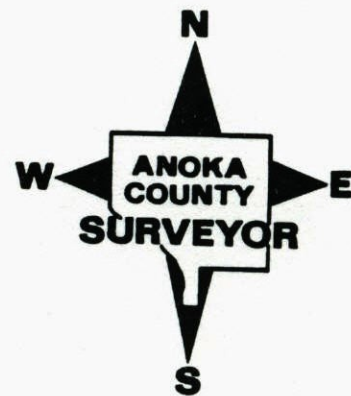
and I further certify that to perpetuate the location of said corner, I did, at the exact location thereof, place a permanent marker consisting of SAME

which reference or witness monuments are located in the manner following:

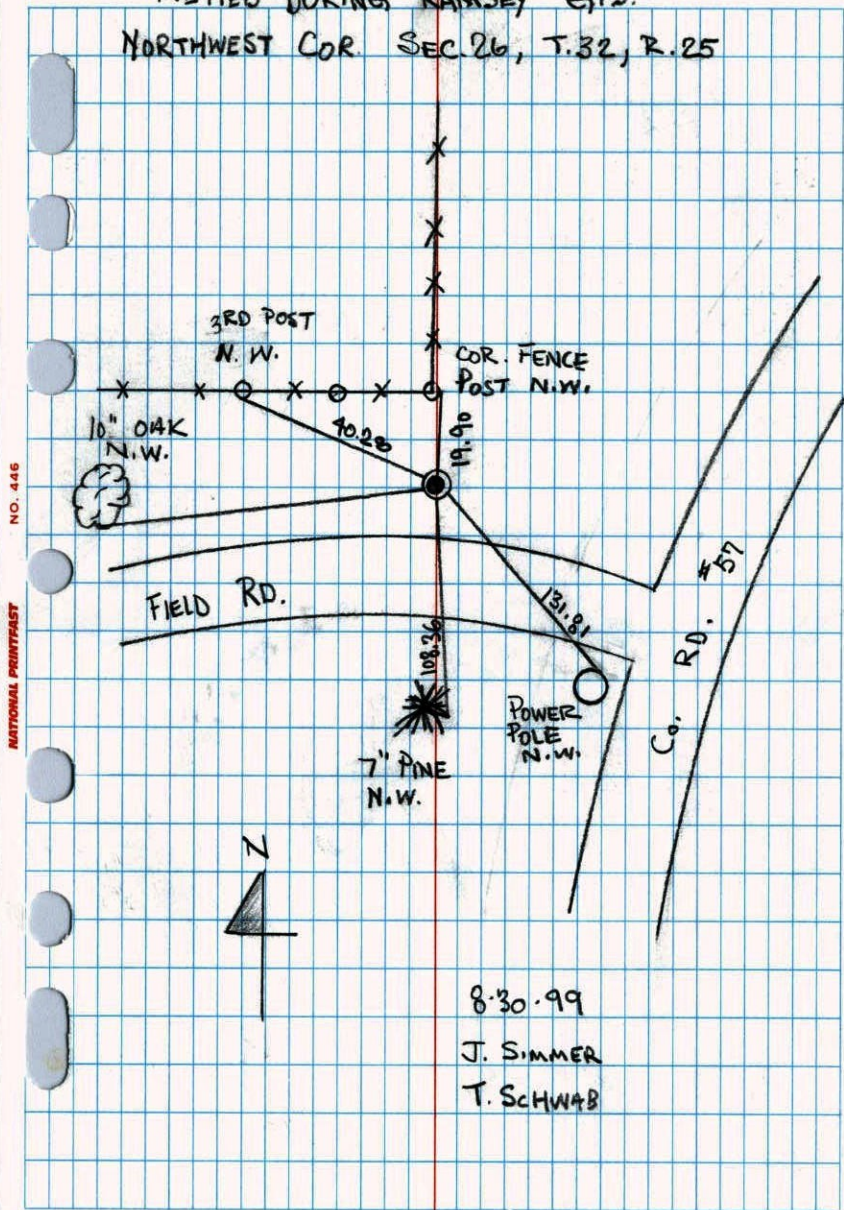


N.A.D.	1983	Co-ordinates
County	Project	Co-ordinates
Northing		<u>175087.8788</u>
Easting		<u>458102.0034</u>
State Plane Co-ordinates		
Y		_____
X		_____
Date _____		

Revised date	Revised date	Revised date
<u>6-17-88</u>		
<u>8-12-93</u>		
<u>8-30-99</u>		



RETIED DURING RAMSEY GPS.  
 NORTHWEST COR. SEC. 26, T. 32, R. 25

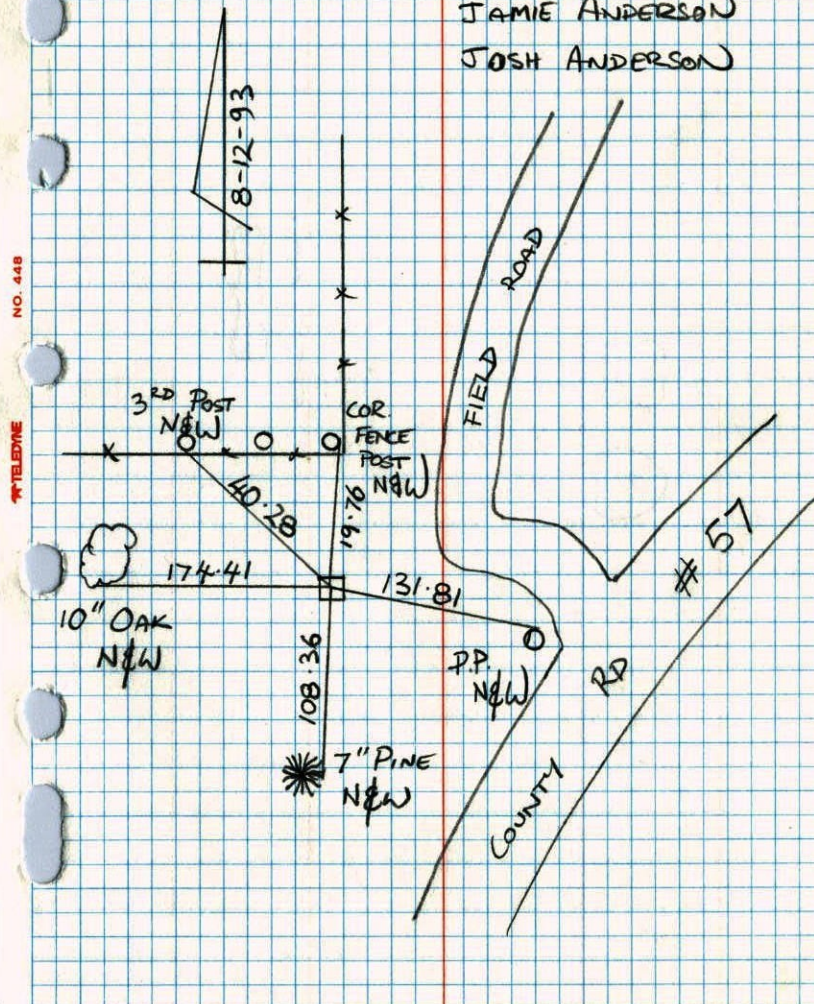


8-30-99  
 J. SIMMER  
 T. SCHWAB

NORTHWEST SEC 26 T 32 R 25

RETIE GRANITE MONUMENT

JAMIE ANDERSON  
 JOSH ANDERSON

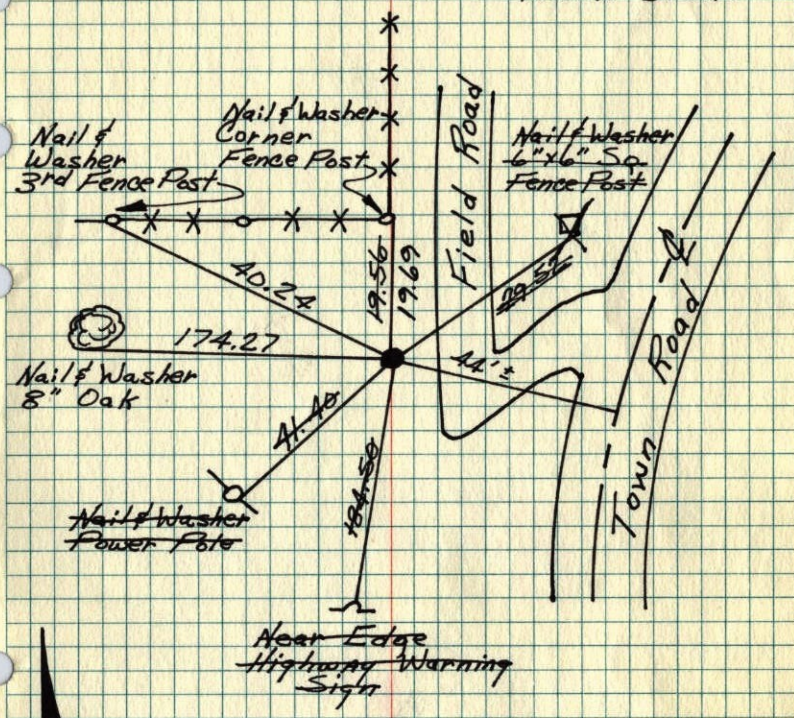


NO. 448 TELEPHONE

# N.W. Cor. Sec. 26-T32-R25

Granite Monument Down 0.5'± Iron Pipe  
Pipe On North Side.

Feb. 9, 1960  
H.W.R. - D.L.P.



Construction Ties	TIECHECK
Sept. 6, 1974	8-17-82
R. Farmer	P. Ross
N. Dahl	P. Hornby
D. Dahl	

TIECHECK	Tie Check
G. Adams	6-25-79
B. SANDERUD	B. Stephens
S. BRIEN	D. Stephens
	P. Ross

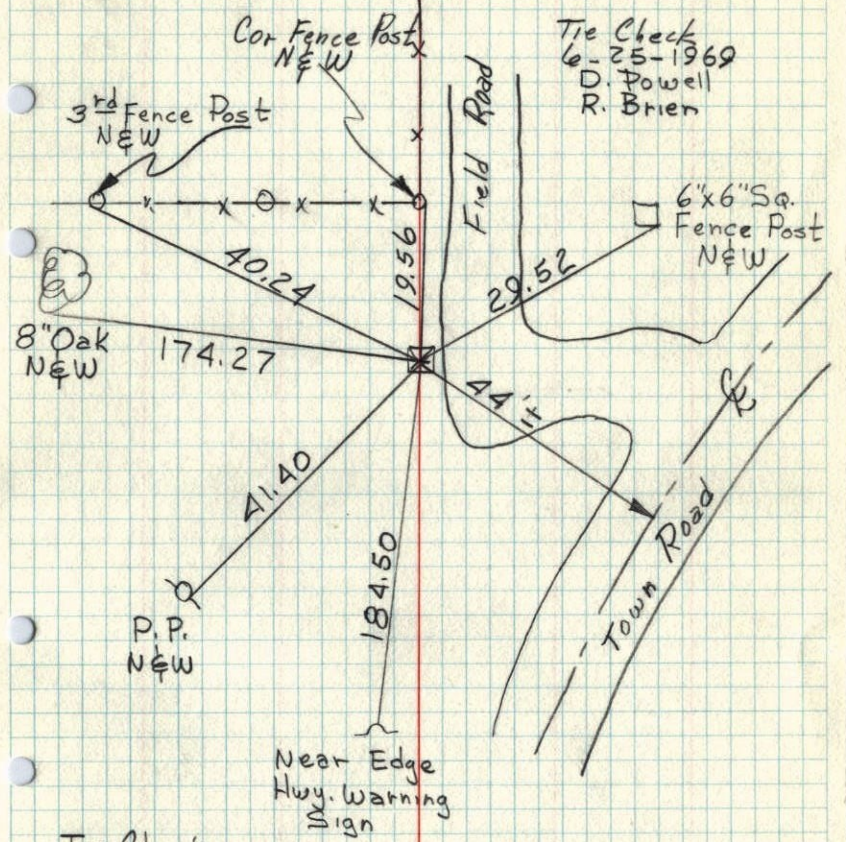
ROLAND W. ANDERSON COUNTY SURVEYOR ANOKA COUNTY, MINNESOTA

TEMPERATURE CORRECTED AND HORIZONTALLY TAPED MEASUREMENTS

# N.W. Cor. Sec. 26-T32-R25

Granite Monument Down 0.5'± Iron Pipe  
On North Side

Feb. 9, 1960  
H.W.R. - D.L.P.



Tie Check  
6-25-1969  
D. Powell  
R. Brien

Tie Check  
7-28-1972  
B. Olson  
R. Bauer  
J. Boettcher

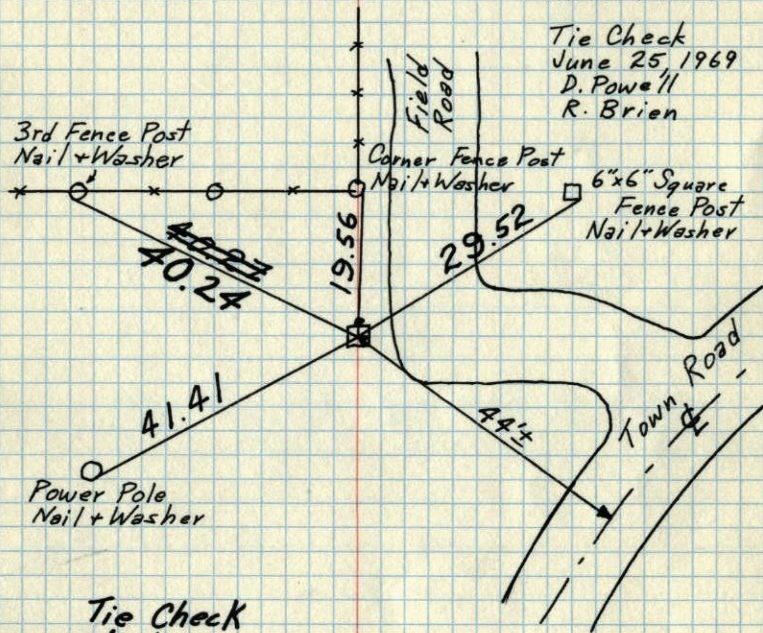
Const. Ties  
8-6-1974  
R. Farmer  
N. Dahl  
D. Dahl  
**TEMP?**

NW Cor. Sec. 26-T32-R25

Granite Monument down 0.5'±.  
Iron Pipe on North side.

Feb. 9, 1960  
H.W.R. - D.L.P.

Tie Check  
June 25, 1969  
D. Powell  
R. Brien



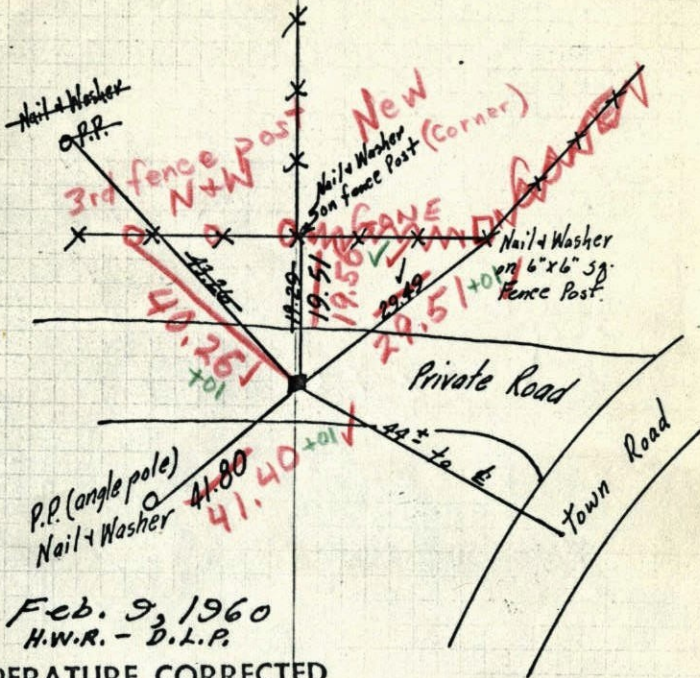
Tie Check  
7/28/72  
B. Olson  
R. Bauer  
J. Boechter

TEMPERATURE CORRECTED  
AND HORIZONTALLY  
TAPED MEASUREMENTS

ROLAND W. ANDERSON  
COUNTY SURVEYOR  
ANOKA COUNTY, MINNESOTA

NW Corner Sec. 26 T32 R25

Granite down to 1/2'. Placed Iron pipe on North face



Feb. 9, 1960  
H.W.R. - D.L.P.

TEMPERATURE CORRECTED  
AND HORIZONTALLY  
TAPED MEASUREMENTS

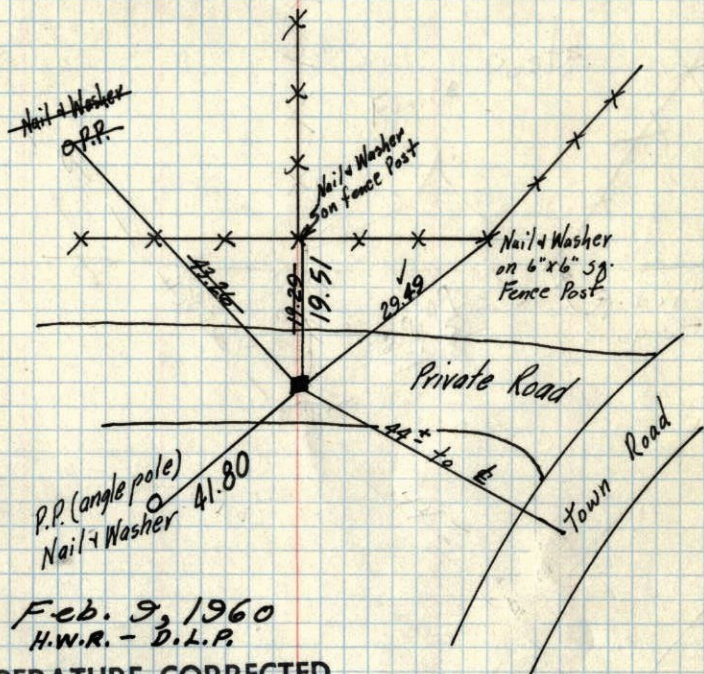
ROLAND W. ANDERSON  
COUNTY SURVEYOR  
ANOKA COUNTY, MINNESOTA

6/25/69  
#4-75 ✓  
D. Powell  
R. Brien

Retie 8/6/64  
M. D. Anderson  
R. Carlson

NW Corner Sec. 26 T32 R25

Granite down to 1/2'. Placed Iron pipe on North face



Feb. 9, 1960  
H.W.R. - D.L.P.

TEMPERATURE CORRECTED  
AND HORIZONTALLY  
TAPED MEASUREMENTS

ROLAND W. ANDERSON  
COUNTY SURVEYOR  
ANOKA COUNTY, MINNESOTA

Retie 8/6/64

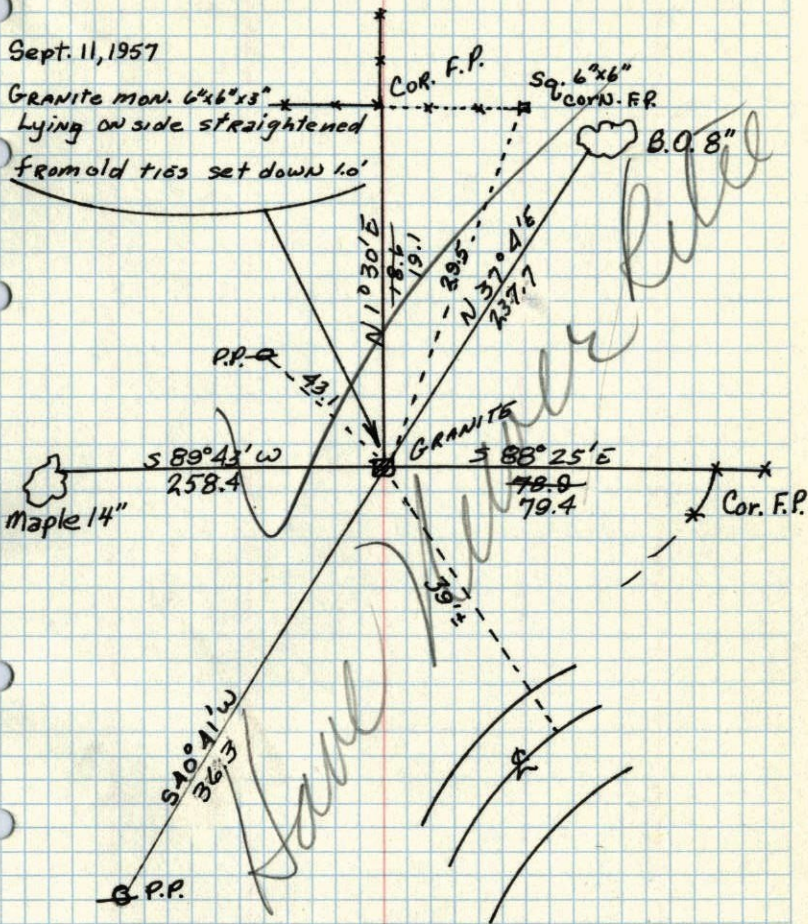
M.D. Anderson  
R. Carlison

NW CORNER OF SEC 26, T32, R25

GRANITE down 1.0'

Sept. 11, 1957

Granite mon. 6"x6"x3"  
Lying on side straightened  
from old ties set down 1.0'

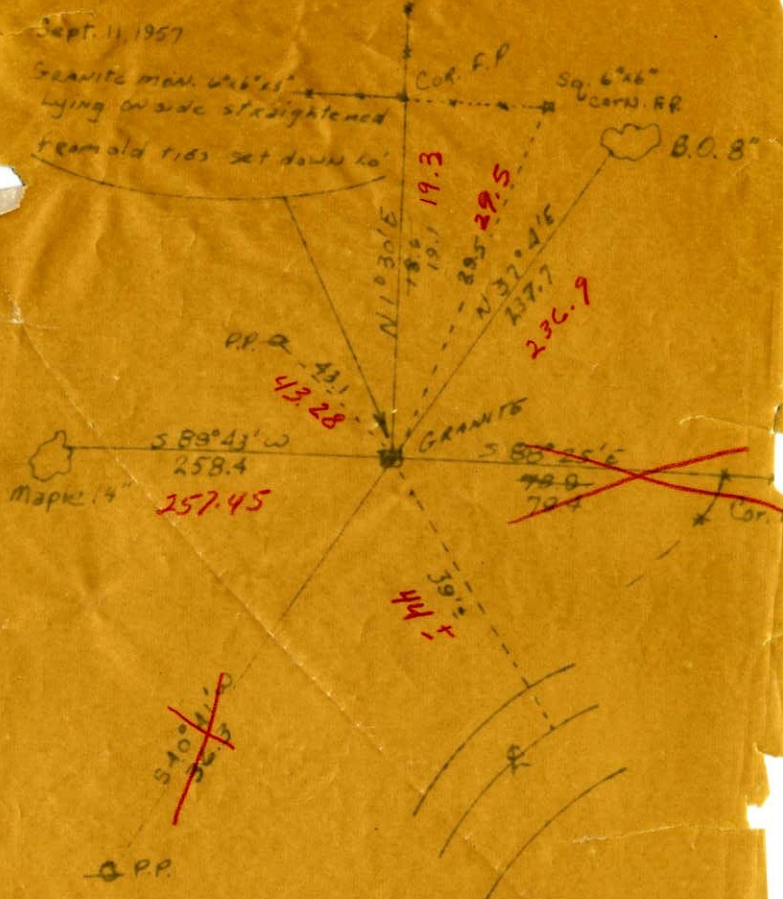


April 20, 1943  
CARTWRIGHT

NW CORNER OF SEC 26, T32, R25  
NW  
GRANITE down 1.0'

Sept. 11, 1957

Granite man wires  
lying on side straightened  
team old rds set down to



April 20, 1957  
CARTWRIGHT