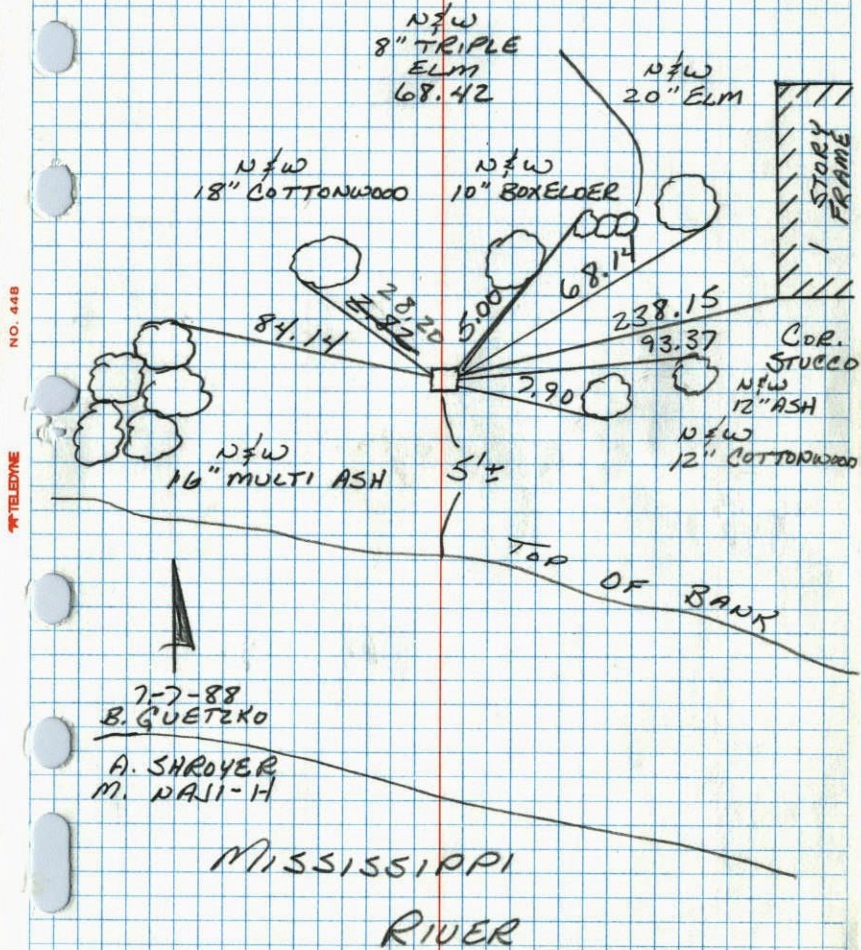


# CONSTRUCTION TIES

135

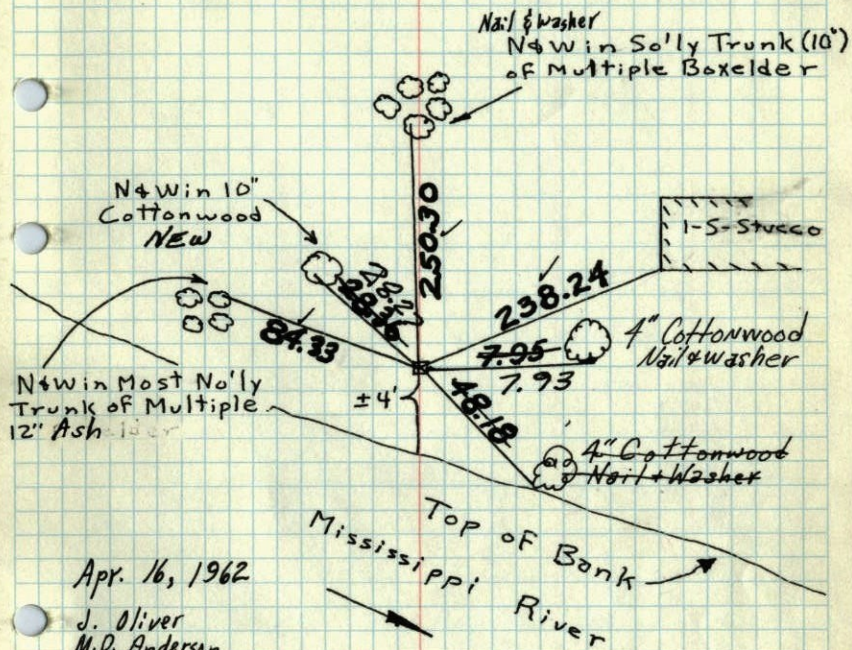
MEANDER CORNER ON THE WEST LINE  
OF SEC 35 T32 R25  
RETIED 4" SQUARE CONCRETE MON.



135

M.C. on West line Sec. 35, T32, R25  
Found 4" Sq. Conc. Mon. up 0.6'

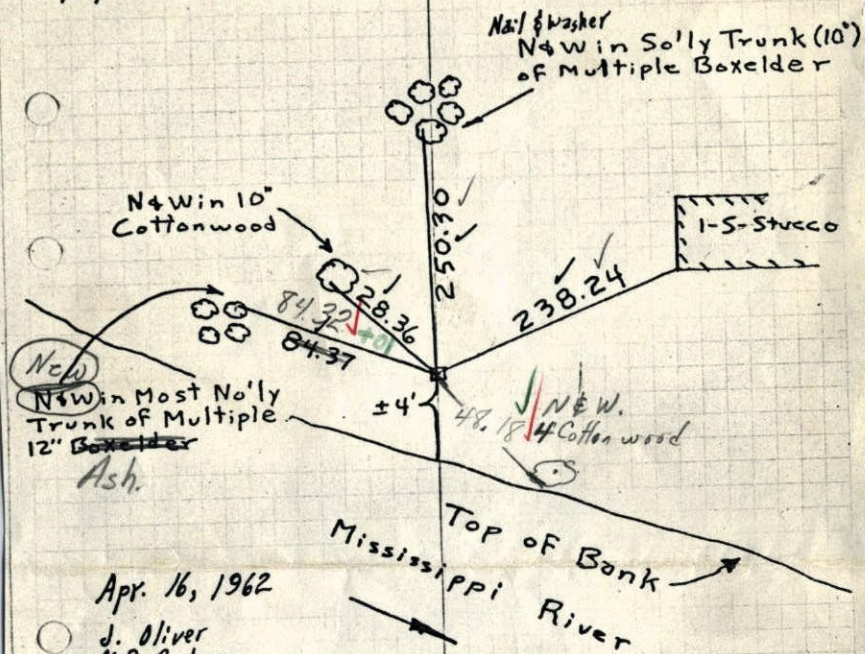
N & W = Nail & Washer



M.C. on West line Sec. 35, T32, R25

Found 4" Sq. Conc. Mon. up 0.6'

N &amp; W = Nail &amp; Washer



Apr. 16, 1962

J. Oliver  
M.D. Anderson

Retie 8/12/64

M. D. Anderson  
J. DunlopTEMPERATURE CORRECTED  
AND HORIZONTALLY  
TAPED MEASUREMENTSROLAND W. ANDERSON  
COUNTY SURVEYOR  
ANOKA COUNTY, MINNESOTA

G-30-69

Temp 70

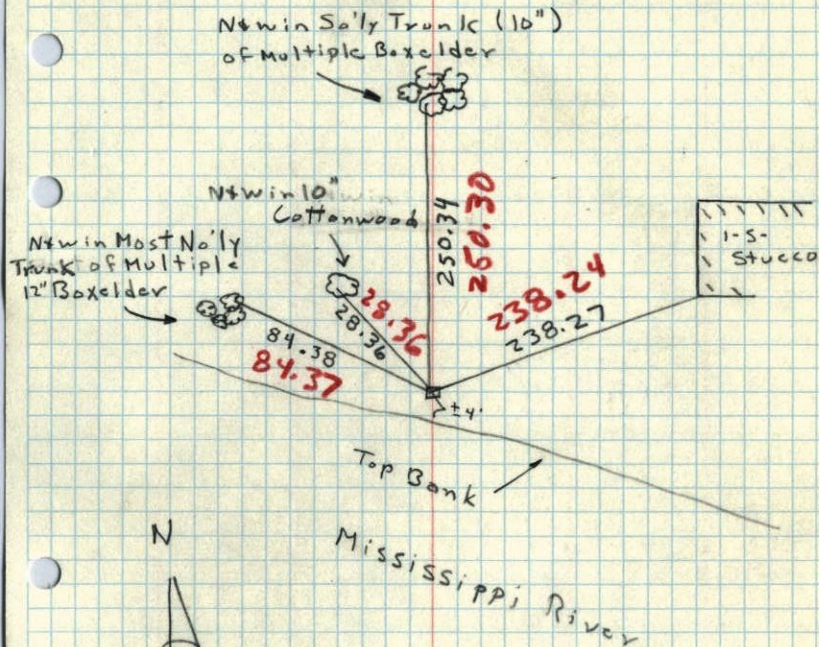
Tape # 5

R.A. Olson

B.N. Olson

M.C. on West Side line Sec. 35, T32, R25

Found 4" Sq. Conc. Mon up 0.6'

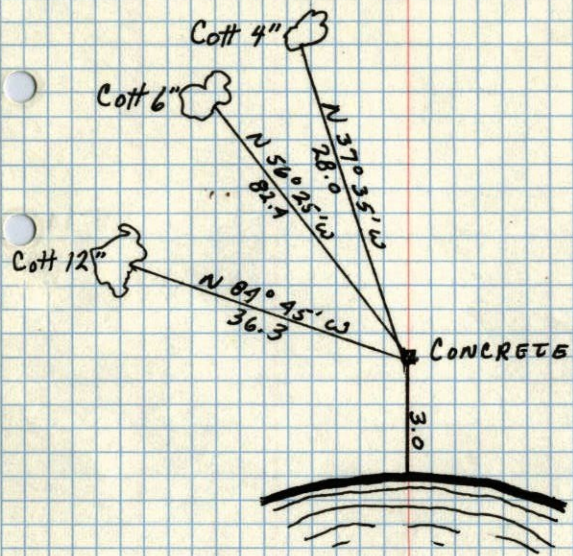


16, Apr. 62

46°

J. Oliver  
M.D. AndersonTEMPERATURE CORRECTED  
AND HORIZONTALLY  
TAPED MEASUREMENTSROLAND W. ANDERSON  
COUNTY SURVEYOR  
ANOKA COUNTY, MINNESOTA

M.C. CORNER OF WEST SIDE SEC 35, T32, R25  
CONC. MON.



New Ties in New Tie  
Book

JUNE 27, 1944  
CARTWRIGHT