

CERTIFICATE OF LOCATION OF GOVERNMENT CORNER

County of Anoka

State of Minnesota

Witness Corner of Sec. 1 Township 32 Range 25

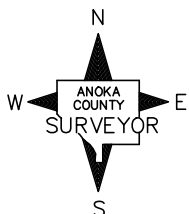
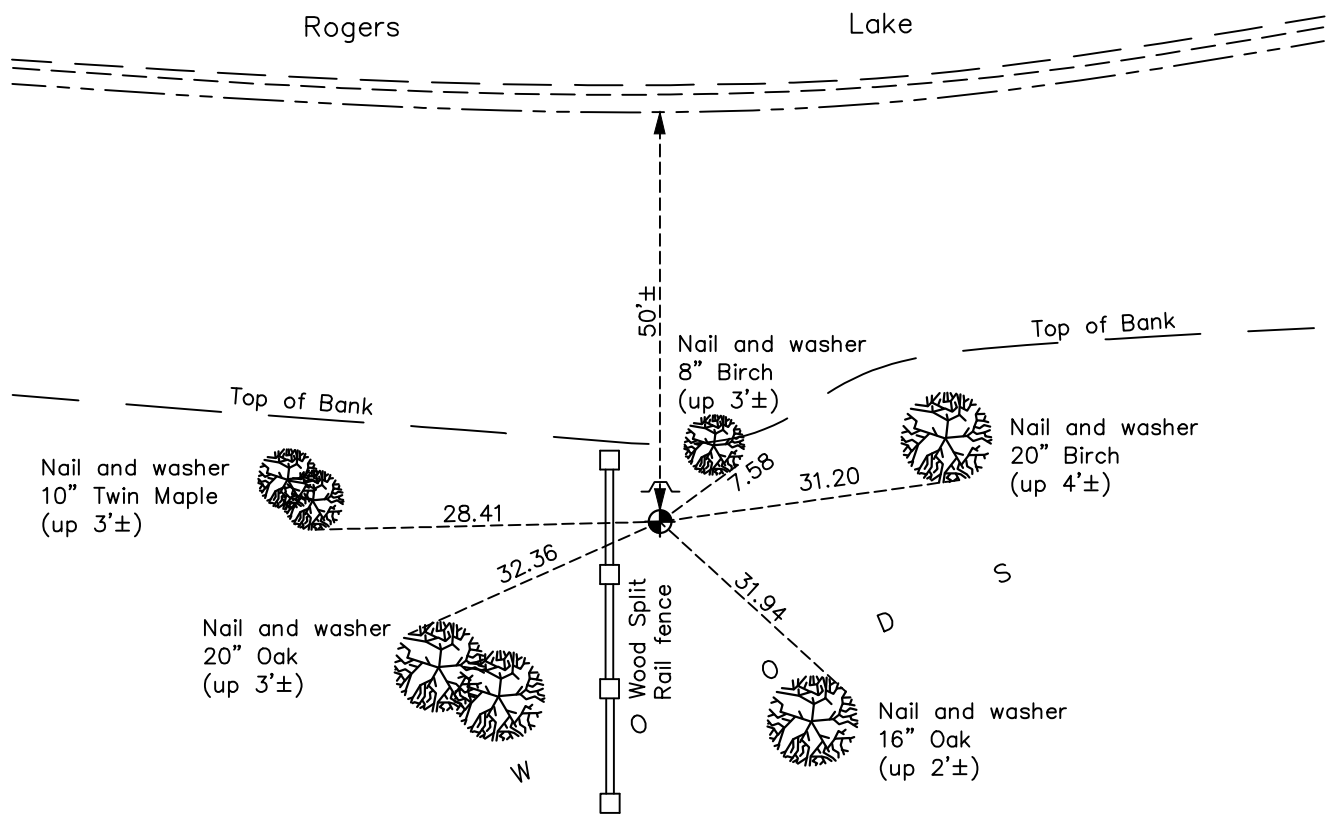
(On east line of section)

On the 27th day of May, 1966, the described corner was evidenced by area resurvey

and to perpetuate the location of said corner, at the exact location thereof, a permanent marker was placed consisting of a cast iron monument with a sign and post on the north side

AND on the 17th day of October, 2022, said permanent marker was found up 0.1' and the ties were updated

Updated reference ties are as shown below.



Revision Date

12/21/2022

N.A.D. 1983 Coordinates
(1996 Adjustment)

County Project Coordinates	
Northing	<u>195537.9249</u>
Easting	<u>468645.0150</u>
Date	<u>1/04/00</u>

I hereby certify that this United States public land survey monument record is correct and complete to the best of my knowledge and belief.

David Zieglmeier Date 2/22/23

David Zieglmeier Anoka County Surveyor

Minnesota License Number 46179

HISTORY OF GOVERNMENT CORNER

Page No. 1

County of Anoka

State of Minnesota

Witness Corner of Sec. 1 Township 32 Range 25
(On east line of section)

CORNER HISTORY:

December 17, 1965 - Set spike 2019.19 feet north of East 1/4 corner using area resurvey. Established ties to spike.

May 27, 1966 – Replaced spike with a cast iron monument. Updated ties.

June 13, 1969 – Found cast iron monument and updated ties.

July 19, 1972 – Found cast iron monument and updated ties.

June 18, 1976 – Found cast iron monument and updated ties.

June 15, 1979 – Found cast iron monument and updated ties.

August 23, 1982 – Found cast iron monument and updated ties.

July 30, 1985 – Found cast iron monument and updated ties.

July 14, 1988 – Found cast iron monument and updated ties.

January 4, 2000 – Found cast iron monument with sign and post on north side, date set unknown, and established NAD 1983 (1996 Adjustment) Anoka County Project Coordinates by Static GPS methods. Updated ties.

May 6, 2010 – Found cast iron monument up 0.1'± with sign and post on north side and updated ties.

September 29, 2015 – Found cast iron monument up 0.1'± with sign and post on north side and updated ties.

March 12, 2020 – Found cast iron monument up 0.1'± with sign and post on north side and updated ties.

October 17, 2022 – Found cast iron monument up 0.1'± with sign and post on north side and updated ties.