

# CERTIFICATE OF LOCATION OF GOVERNMENT CORNER

County of Anoka

State of Minnesota

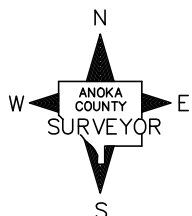
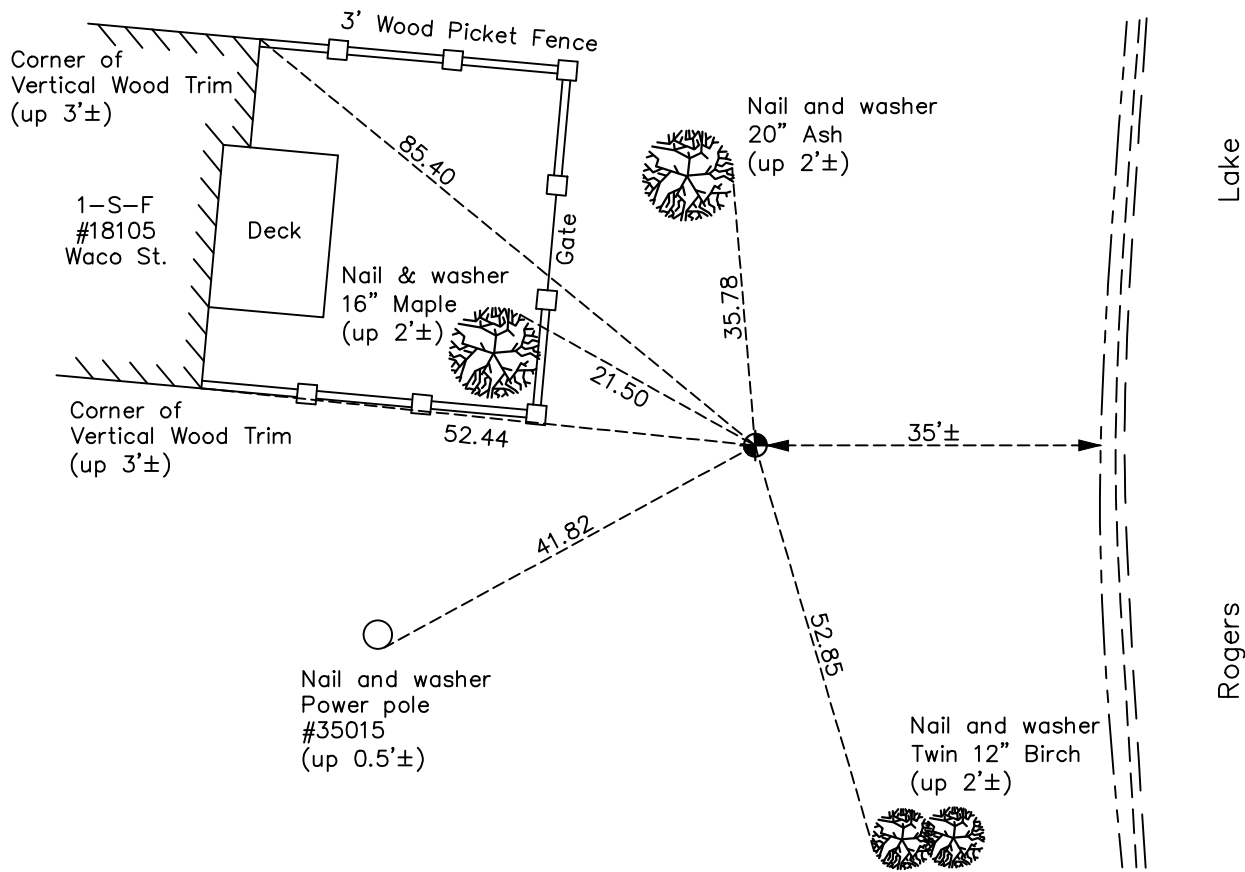
Witness Corner of Sec. 1 Township 32 Range 25  
(On north line of section)

On the 13th day of December, 1965, the described corner was evidenced by area resurvey

and to perpetuate the location of said corner, at the exact location thereof, a permanent marker was placed consisting of a cast iron monument

AND on the 18th day of October, 2022, said permanent marker was found down 0.2' and the ties were updated

Updated reference ties are as shown below.



Revision Date  
12/21/2022

N.A.D. 1983 Coordinates  
(1996 Adjustment)

County Project Coordinates	
Northing	<u>196146.9908</u>
Easting	<u>467828.2339</u>
Date	<u>2/15/00</u>

I hereby certify that this United States public land survey monument record is correct and complete to the best of my knowledge and belief.

*David Zieglmeier* Date 2/22/23

David Zieglmeier Anoka County Surveyor  
 Minnesota License Number 46179

# HISTORY OF GOVERNMENT CORNER

Page No. 2

County of Anoka

State of Minnesota

Witness Corner of Sec. 1 Township 32 Range 25  
(On north line of section)

## **CORNER HISTORY:**

December 13, 1965 - Set cast iron monument 1769.85 feet east of North 1/4 corner and flush with the surface using area resurvey and established ties to monument.

June 27, 1969 - Found cast iron monument and updated ties.

July 19, 1972 - Found cast iron monument and updated ties.

June 18, 1976 - Found cast iron monument and updated ties.

June 27, 1979 - Found cast iron monument and updated ties.

August 9, 1982 - Found cast iron monument and updated ties.

July 30, 1985 - Found cast iron monument and updated ties.

July 14, 1988 - Found cast iron monument and updated ties.

August 9, 1993 - Found cast iron monument and updated ties.

February 15, 2000 - Found cast iron monument. Established NAD 1983 (1996 Adj.) Anoka County project coordinates by static GPS methods. Updated ties.

May 6, 2010 - Found cast iron monument down 0.2'± and updated ties.

September 29, 2015 - Found cast iron monument down 0.2'± and updated ties.

June 15, 2020 - Found cast iron monument down 0.2'± and updated ties.

May 11, 2022 - Found cast iron monument down 0.2'± and 0.4'± under a newly constructed shed. Verified position by VRS GPS methods while antenna was at an angle. Unable to update ties.

October 18, 2022 - Found cast iron monument down 0.2'±, verified position by VRS GPS method, updated ties.