

CERTIFICATE OF LOCATION OF GOVERNMENT CORNER

County of Anoka

State of Minnesota

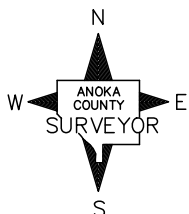
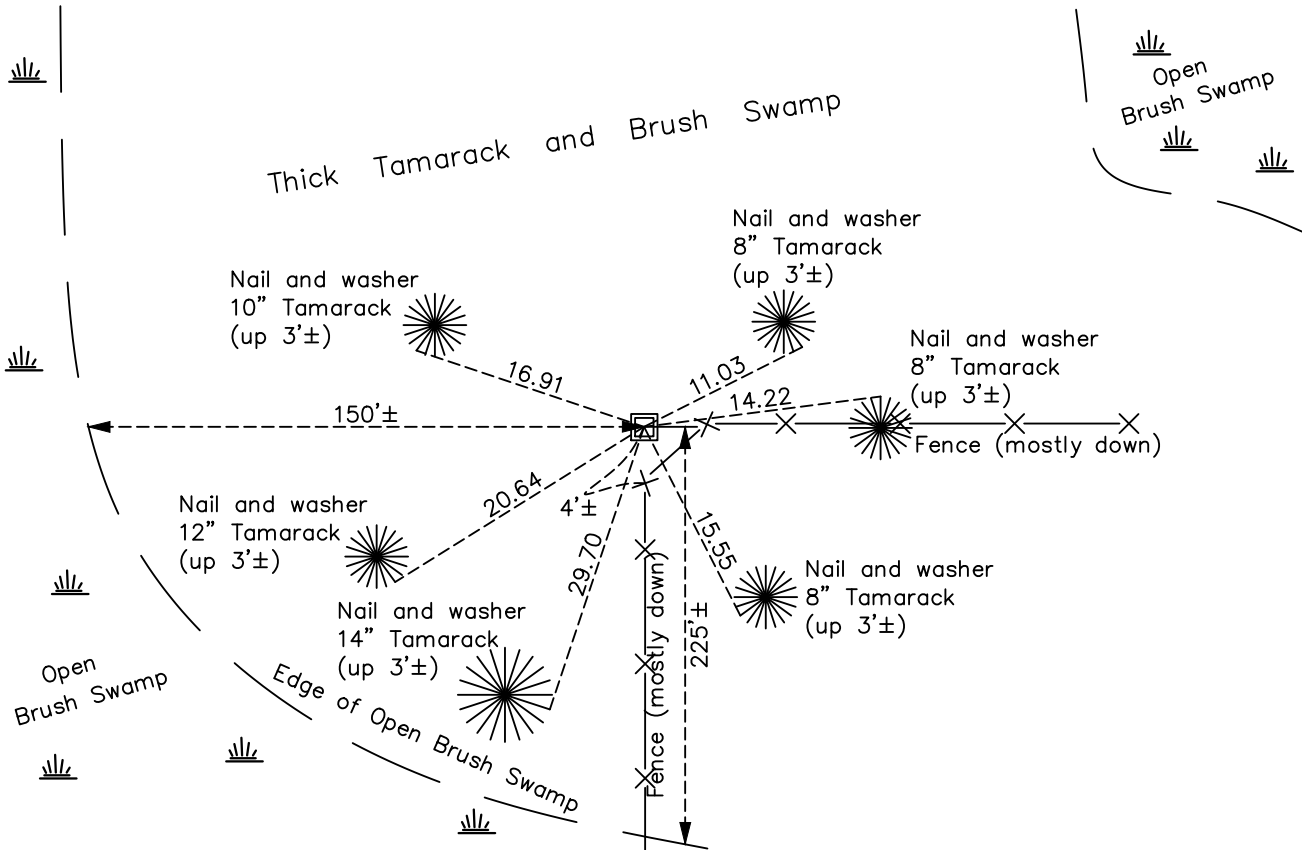
North $\frac{1}{4}$ Corner of Sec. 1 Township 32 Range 25

On the 17th day of December, 1965, the described corner was evidenced by area resurvey

and to perpetuate the location of said corner, at the exact location thereof, a permanent marker was placed consisting of a green and white 2" square steel Telspar monument with a sign attached

AND on the 6th day of January, 2021, said permanent marker was found up 3.5'± and the ties were updated

Updated reference ties are as shown below.



Revision Date

1/06/2021

N.A.D. 1983 Coordinates
(1996 Adjustment)

County Project Coordinates	
Northing	<u>196172.8641</u>
Easting	<u>466058.2571</u>
Date	<u>2/22/00</u>

I hereby certify that this United States public land survey monument record is correct and complete to the best of my knowledge and belief.

David M Zieglmeier Date 8/31/21

David Zieglmeier Anoka County Surveyor
Minnesota License Number 46179

HISTORY OF GOVERNMENT CORNER

Page No. 3

County of Anoka

State of Minnesota

North 1/4 Corner of Sec. 1 Township 32 Range 25

CORNER HISTORY:

December 17, 1965 -Set 1.5" red and white iron pipe up 3.5'± using area resurvey and established ties to iron pipe.

February 1, 1978 – Found 1.5" red and white iron pipe set up 3.5'± and updated ties.

July 13, 1988 – Found 1.5" red and white iron pipe and updated ties.

February 22, 2000 – Found 1.5" red and white iron pipe and established NAD 1983 (1996 Adjustment) Anoka County Project Coordinates by Static GPS methods.

February 29, 2000 – Replaced 1.5" red and white iron pipe with a 2" square steel Telespar monument and updated ties.

January 7, 2011 – Found 2" square steel Telespar monument up 2.5'± and updated ties.

March 2, 2018 – Found 2" square steel Telespar monument with sign attached up 3.5'± and updated ties.

January 6, 2021 – Found 2" square steel Telespar monument with sign attached up 3.5'± and updated ties.