

CERTIFICATE OF LOCATION OF GOVERNMENT CORNER

County of Anoka

State of Minnesota

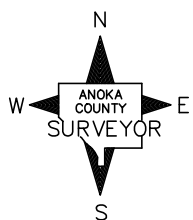
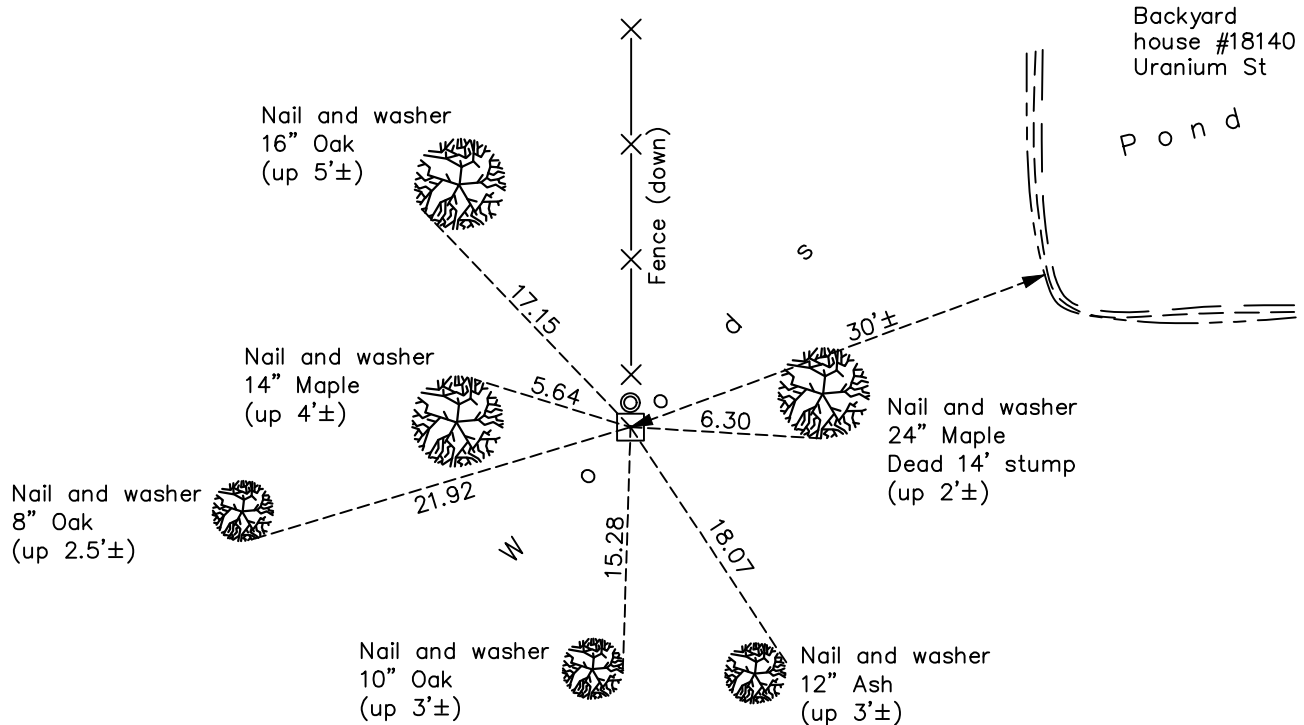
Northeast Corner of Sec. 3 Township 32 Range 25

On the 20th day of July, 1961, the described corner was evidenced by a granite monument with a 3/4" iron pipe on the north side

and to perpetuate the location of said corner, at the exact location thereof, a permanent marker was placed consisting of the same granite monument with a 3/4" iron pipe on the North side of the monument

AND on the 20th day of October, 2022, said permanent marker was found flush and the ties were updated

Updated reference ties are as shown below.



Revision Date
12/21/2022

N.A.D. 1983 Coordinates
(1996 Adjustment)

County Project Coordinates	
Northing	<u>196261.3304</u>
Easting	<u>458201.3909</u>
Date	<u>2/28/00</u>

I hereby certify that this United States public land survey monument record is correct and complete to the best of my knowledge and belief.

David Zieglmeier Date 2/22/23

David Zieglmeier Anoka County Surveyor
Minnesota License Number 46179

HISTORY OF GOVERNMENT CORNER

Page No. 6

County of Anoka

State of Minnesota

Northeast Corner of Sec. 3 Township 32 Range 25

CORNER HISTORY:

July 20, 1961 – Found granite monument on east–west fence line. Established ties to monument.

June 18, 1969 – Found granite monument set flush with the surface, on east–west fence line and with a 3/4" iron pipe on the north side of monument. Updated ties.

July 25, 1972 – Found granite monument on east–west fence line with a 3/4" iron pipe on the north side of monument. Updated ties.

June 21, 1976 – Found granite monument on east–west fence line with a 3/4" iron pipe on the north side of monument. Updated ties.

June 27, 1979 – Found granite monument on east–west fence line with a 3/4" iron pipe on the north side of monument. Updated ties.

August 18, 1982 – Found granite monument on east–west fence line with a 3/4" iron pipe on the north side of monument. Updated ties.

July 31, 1985 – Found granite monument on east–west fence line with a 3/4" iron pipe on the north side of monument. Updated ties.

July 5, 1988 – Found granite monument with a 3/4" iron pipe on the north side of monument. Updated ties.

August 23, 1993 – Found granite monument with a 3/4" iron pipe on the north side of monument. Updated ties.

February 28, 2000 – Found granite monument with 3/4" iron pipe on north side of monument and established NAD 1983 (1996 Adjustment) Anoka County Project Coordinates by Static GPS methods. Updated ties.

June 2, 2010 – Found granite monument with a 3/4" iron pipe on the north side of monument. Updated ties.

September 28, 2015 – Found granite monument with a 3/4" iron pipe on the north side of monument. Updated ties.

June 11, 2020 – Found granite monument with a 3/4" iron pipe on the north side of monument. Updated ties.

October 20, 2022 – Found granite monument flush with a 3/4" iron pipe on the north side of monument, verified position by VRS GPS method and updated ties.