

# CERTIFICATE OF LOCATION OF GOVERNMENT CORNER

County of Anoka

State of Minnesota

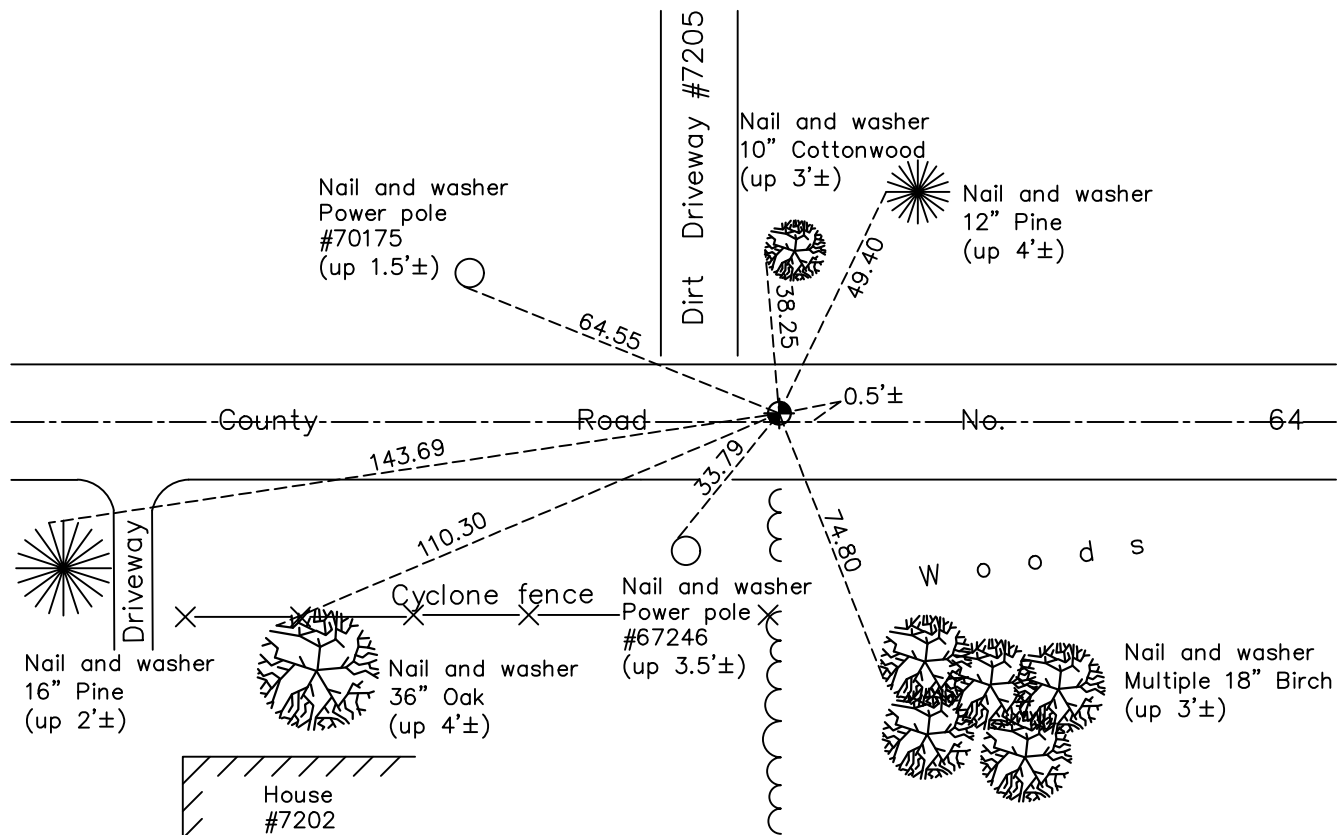
## Northeast Corner of Sec. 4 Township 32 Range 25

On the 14th day of May, 1969, the described corner was evidenced by a railroad spike

and to perpetuate the location of said corner, at the exact location thereof, a permanent marker was placed consisting of a cast iron monument

AND on the 19th day of July, 2023, said permanent marker was reset with 8" CIM set in concrete after road construction. Verified position by ACS RTK GPS method & updated ties after setting

Updated reference ties are as shown below.



Revision Date  
10/03/2023

N.A.D. 1983 Coordinates  
(1996 Adjustment)

County Project Coordinates	
Northing	<u>196317.3500</u>
Easting	<u>452960.2036</u>
Date	<u>12/30/99</u>

I hereby certify that this United States public land survey monument record is correct and complete to the best of my knowledge and belief.

*David Zieglmeier* Date 3/29/24

David Zieglmeier Anoka County Surveyor  
Minnesota License Number 46179

# HISTORY OF GOVERNMENT CORNER

Page No. 8

County of Anoka

State of Minnesota

## Northeast Corner of Sec. 4 Township 32 Range 25

### **CORNER HISTORY:**

**No date** – Anoka County Highway Department found spike. Established tie to spike.

May 14, 1969 – Found railroad spike in centerline of blacktop road and verified location using area resurvey. Replaced spike with cast iron monument and established ties to monument.

July 25, 1972 – Found cast iron monument and updated ties.

October 17, 1975 – Found cast iron monument and raised it.

6/21/76, 6/15/79, 8/13/82, 7/19/85, 6/6/88, 8/4/93 – Found cast iron monument and updated ties.

December 30, 1999 – Found cast iron monument and established NAD 1983 (1996 Adjustment) Anoka County Project Coordinates by Static GPS methods. Updated ties.

April 27, 2010 – Found cast iron monument on centerline of road and updated ties.

July 24, 2015 – Found cast iron monument  $0.5' \pm$  north of centerline of road and down  $0.3' \pm$ . Raised monument to flush with the surface and updated ties. Verified location of corner by VRS GPS methods.

March 12, 2020 – Found cast iron monument on centerline of road and updated ties.

September 22, 2022 – Found cast iron monument, verified position by VRS GPS method and updated ties.

May 3, 2023 – Found cast iron monument, verified position by RTK GPS method and updated ties. Removed cast iron monument for road construction.

July 19, 2023 – Reset w/ 8" Cast Iron Monument set in concrete after road construction. Verified position with ACS RTK GPS method and updated ties after setting. Job #23-121