

# CERTIFICATE OF LOCATION OF GOVERNMENT CORNER

County of Anoka

State of Minnesota

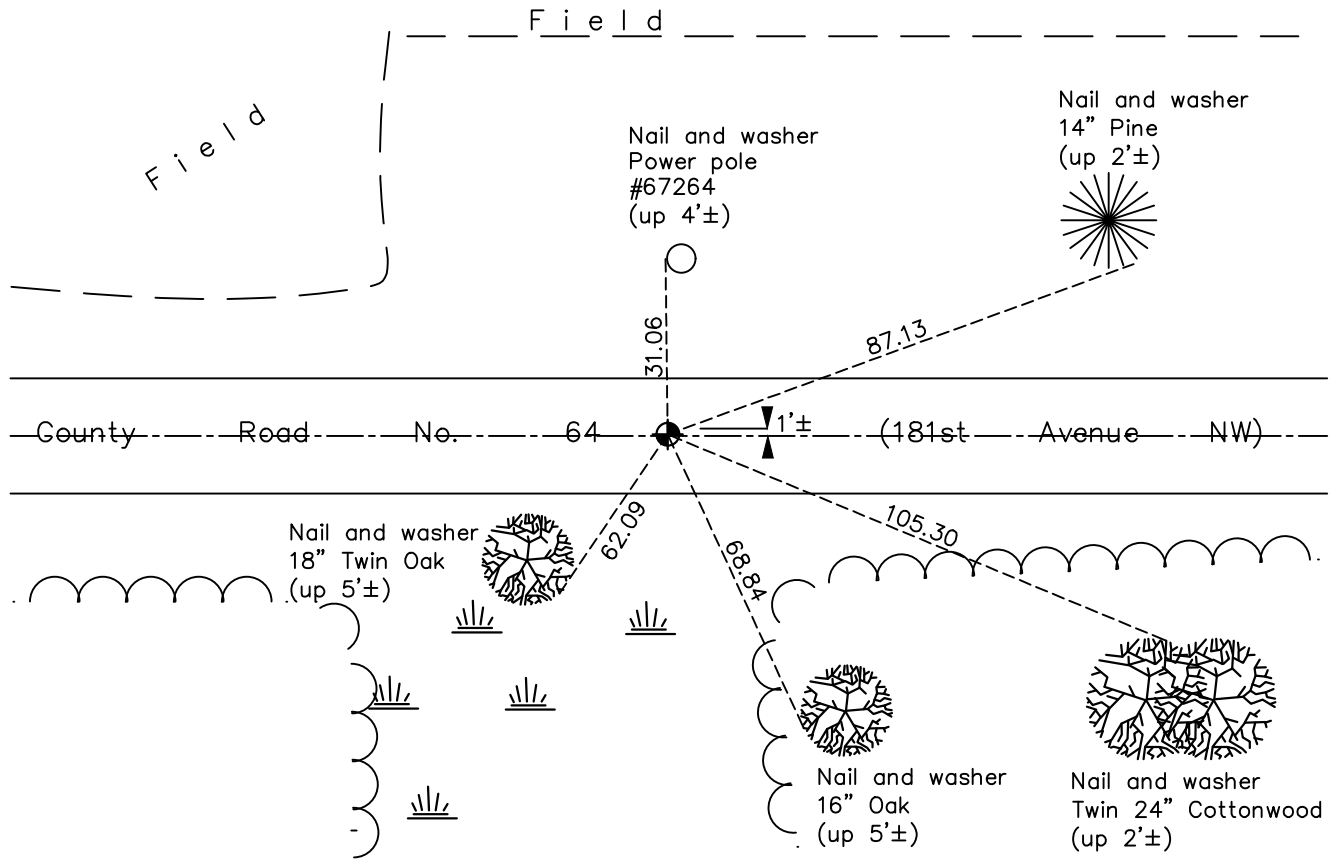
## Northeast Corner of Sec. 5 Township 32 Range 25

On the 14th day of May, 1969, the described corner was evidenced by area resurvey

and to perpetuate the location of said corner, at the exact location thereof, a permanent marker was placed consisting of a cast iron monument

AND on the 19th day of July, 2023, said permanent marker was reset with 8" CIM set in concrete after road construction. Verified position by ACS RTK GPS method & updated ties after setting

Updated reference ties are as shown below.



Revision Date

10/03/2023

N.A.D. 1983 Coordinates  
(1996 Adjustment)

County Project Coordinates	
Northing	<u>196341.2036</u>
Easting	<u>447726.5638</u>
Date	<u>12/29/99</u>

I hereby certify that this United States public land survey monument record is correct and complete to the best of my knowledge and belief.

David Zieglmeier Date 3/29/24

David Zieglmeier Anoka County Surveyor  
Minnesota License Number 46179

# HISTORY OF GOVERNMENT CORNER

Page No. 10

County of Anoka

State of Minnesota

## Northeast Corner of Sec. 5 Township 32 Range 25

### **CORNER HISTORY:**

**May 14, 1969** – Set cast iron monument in centerline of blacktop road using area resurvey and established ties to monument.

July 17, 1972 – Found cast iron monument and updated ties. Set P.K. nails north and east of monument.

October 16, 1975 – Found cast iron monument and raised it to flush with the surface. Set P.K. nails 2.00' north and east of monument and updated ties.

6/21/76, 6/15/79, 8/13/82, 11/10/83, 7/19/85, 6/6/88, 8/4/93 – Found cast iron monument and updated ties.

December 29, 1999 – Found cast iron monument and established NAD 1983 (1996 Adjustment) Anoka County Project Coordinates by Static GPS methods. Updated ties.

April 21, 2010 – Found cast iron monument and updated ties.

July 17, 2015 – Found cast iron monument  $1' \pm$  north of centerline of road and down  $0.3' \pm$ . Raised monument to flush with the surface and updated ties. Verified location of corner by VRS GPS methods.

March 12, 2020 – Found cast iron monument, updated ties and verified position by GPS VRS methods

September 26, 2022 – Found cast iron monument, verified position by VRS GPS method and updated the ties.

May 3, 2023 – Found cast iron monument, verified position by RTK GPS method and updated ties. Removed cast iron monument for road construction.

July 19, 2023 – Reset w/ 8" Cast Iron Monument set in concrete after road construction. Verified position with ACS RTK GPS method and updated ties after setting. Job #23-121