

CERTIFICATE OF LOCATION OF GOVERNMENT CORNER

County of Anoka

State of Minnesota

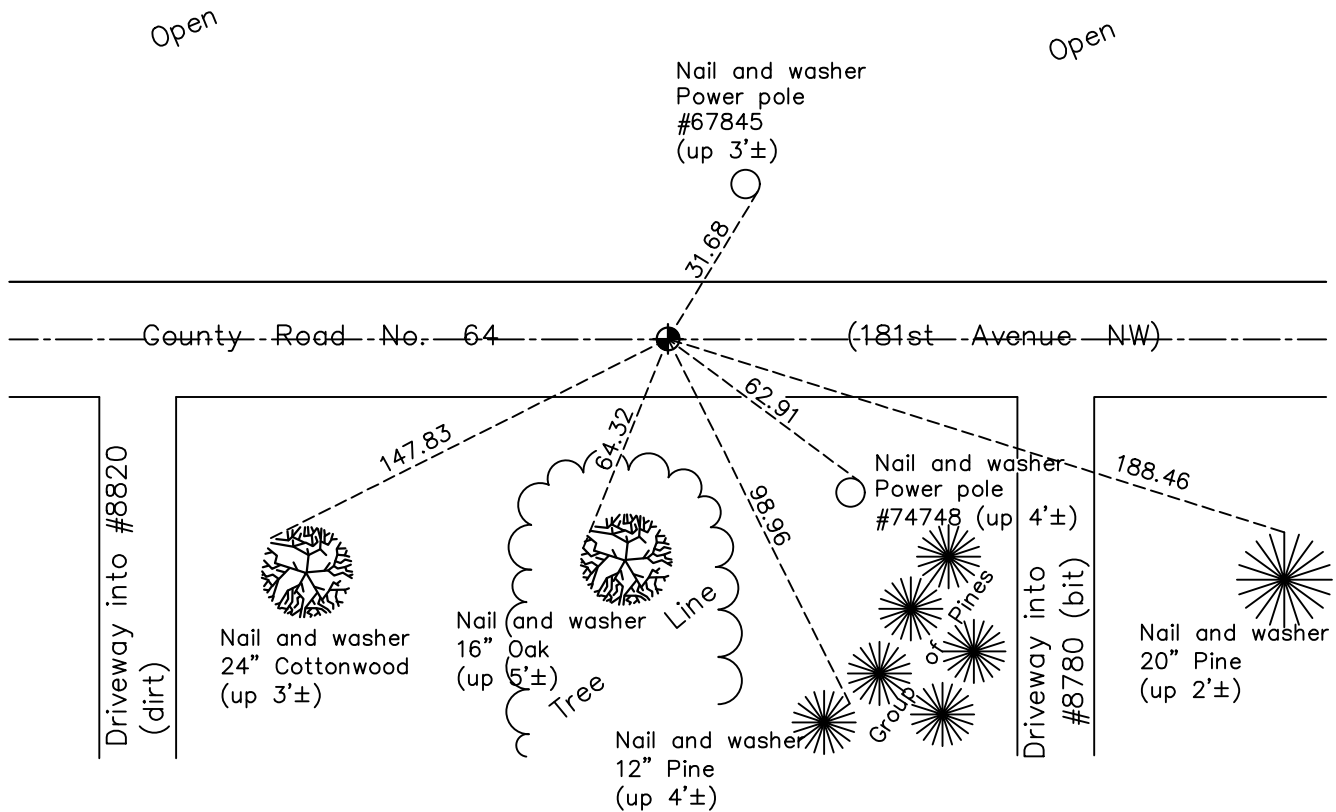
Northeast Corner of Sec. 6 Township 32 Range 25

On the 28th day of August, 1969, the described corner was evidenced by P.K. nail set
March 5, 1969 using an area resurvey

and to perpetuate the location of said corner, at the exact location thereof, a permanent marker was placed consisting of a cast iron monument

AND on the 19th day of July, 2023, said permanent marker was reset with 8" CIM set in concrete after road construction. Verified position by ACS RTK GPS method & updated ties after setting

Updated reference ties are as shown below.



Revision Date
10/03/2023

N.A.D. 1983 Coordinates
(1996 Adjustment)

County Project Coordinates	
Northing	196375.1079
Easting	442493.7952
Date	12/30/99

I hereby certify that this United States public land survey monument record is correct and complete to the best of my knowledge and belief.
David Zieglmeier Date 3/29/24
David Zieglmeier Anoka County Surveyor
Minnesota License Number 46179

HISTORY OF GOVERNMENT CORNER

Page No. 12

County of Anoka

State of Minnesota

Northeast Corner of Sec. 6 Township 32 Range 25

CORNER HISTORY:

March 5, 1969 -Set P.K. nail in centerline of road and 6'± west of tree line to the south using area resurvey and established ties to monument.

August 28, 1969 – Replaced P.K. nail with a cast iron monument set flush with the surface. Set P.K. nails 2.00' north and east and updated ties.

July 17, 1972 – Found cast iron monument and updated ties.

October 16, 1975 – Raised cast iron monument and updated ties.

6/21/76, 6/15/79, 8/13/82, 7/22/85, 6/6/88, 6/6/93 – Found cast iron monument and updated ties.

December 30, 1999 – Found cast iron monument and established NAD 1983 (1996 Adjustment) Anoka County Project Coordinates by Static GPS methods. Updated ties.

May 18, 2010 – Found cast iron monument flush with the surface and updated ties.

June 18, 2015 – Found cast iron monument flush with the surface and on centerline. Updated ties and verified location of corner by VRS GPS methods.

June 10, 2020 – Found cast iron monument and updated ties.

September 29, 2022 – Found cast iron monument flush, verified position by VRS GPS method and updated ties.

May 3, 2023 – Found cast iron monument, verified position by RTK GPS method and updated ties. Removed cast iron monument for road construction.

July 19, 2023 – Reset w/ 8" Cast Iron Monument set in concrete after road const. Verified position w/ ACS RTK GPS method & updated ties after setting. Job #23-121