

# CERTIFICATE OF LOCATION OF GOVERNMENT CORNER

County of Anoka

State of Minnesota

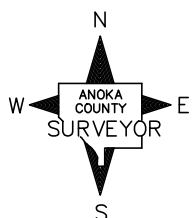
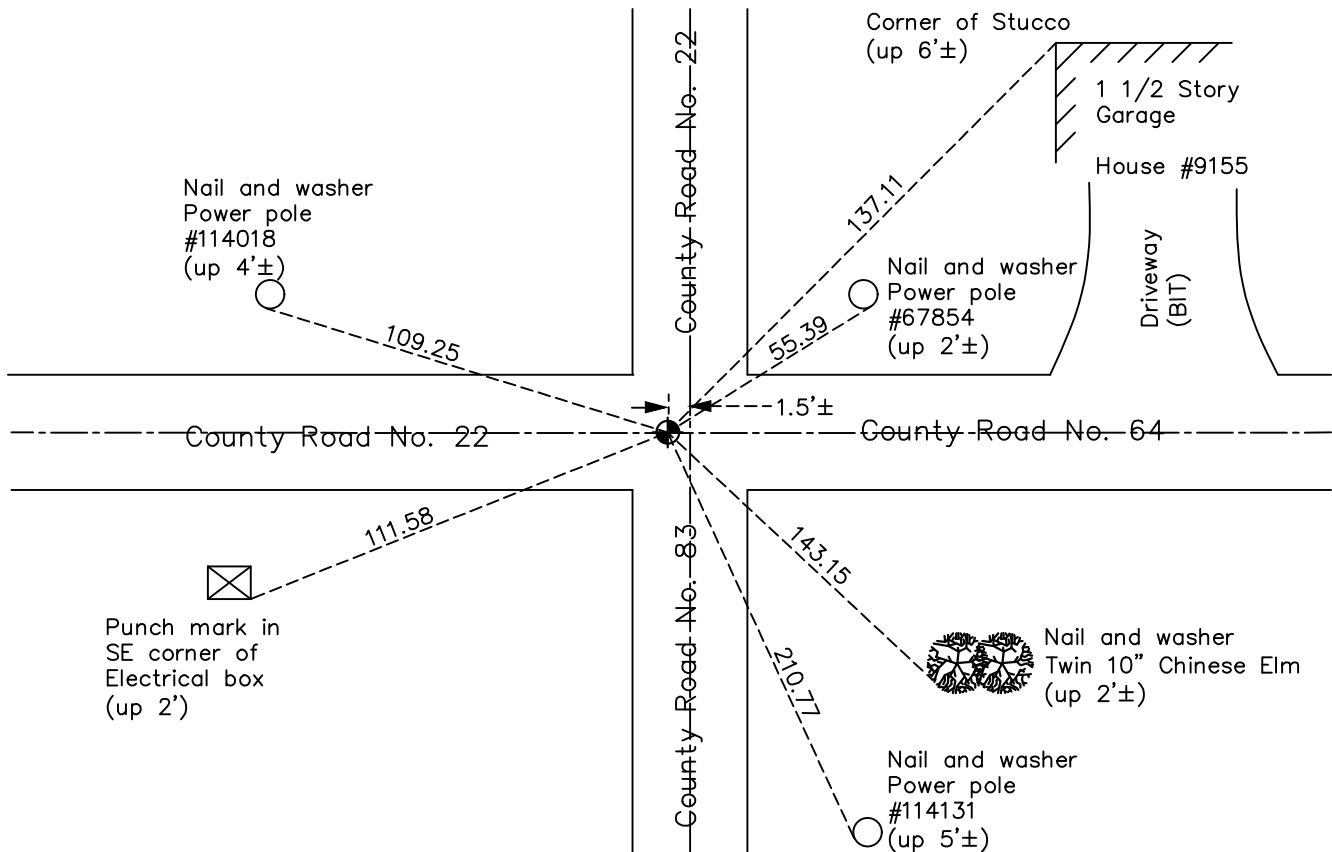
## North $\frac{1}{4}$ Corner of Sec. 6 Township 32 Range 25

On the 5th day of March, 1969, the described corner was evidenced by a bridge spike set by using an area resurvey

and to perpetuate the location of said corner, at the exact location thereof, a permanent marker was placed consisting of a cast iron monument found July 17, 1972

AND on the 24th day of October, 2022, said permanent marker was found flush on east-west centerline and 1.5'± west of north-south centerline and the ties were updated

Updated reference ties are as shown below.



Revision Date  
12/21/2022

N.A.D. 1983 Coordinates  
(1996 Adjustment)

County Project Coordinates	
Northing	<u>196373.2065</u>
Easting	<u>439857.8601</u>
Date	<u>9/01/99</u>

I hereby certify that this United States public land survey monument record is correct and complete to the best of my knowledge and belief.

*David Zieglmeier* Date 2/22/23

David Zieglmeier Anoka County Surveyor  
Minnesota License Number 46179

# HISTORY OF GOVERNMENT CORNER

Page No. 13

County of Anoka

State of Minnesota

## North 1/4 Corner of Sec. 6 Township 32 Range 25

### **CORNER HISTORY:**

**March 5, 1969** - Set bridge spike using area resurvey and established ties to monument.

July 17, 1972 – Found cast iron monument with P.K. nails north and east (date set unknown) and updated ties.

September 11, 1972 – Raised cast iron monument and updated ties.

October 16, 1975 – Raised cast iron monument with P.K. nails 2.00' north and east and updated ties.

June 21, 1976 – Found cast iron monument and updated ties.

June 15, 1979 – Found cast iron monument and updated ties.

August 13, 1982 – Found cast iron monument and updated ties.

July 22, 1985 – Found cast iron monument and updated ties.

June 6, 1988 – Found cast iron monument and updated ties.

August 4, 1993 – Found cast iron monument and updated ties.

September 1, 1999 – Found cast iron monument 5'± west of centerline—centerline and established NAD 1983 (1996 Adjustment) Anoka County Project Coordinates by Static GPS methods. Updated ties.

June 12, 2000 – Set construction ties and removed cast iron monument prior to road construction.

June 22, 2001 – Found cast iron monument (date reset unknown) and verified location of corner by Static GPS methods. Updated ties.

April 21, 2010 – Found cast iron monument and updated ties.

June 18, 2015 – Found cast iron monument on east—west centerline and 1.5'± west of north—south centerline. Updated ties and verified location of corner by VRS GPS methods.

June 8, 2020 – Found cast iron monument on east—west centerline and 1.5'± west of north—south centerline. Updated ties and verified location of corner by VRS GPS methods.

October 24, 2022 – Found cast iron monument flush, verified position by VRS GPS method and updated ties.