

CERTIFICATE OF LOCATION OF GOVERNMENT CORNER

County of Anoka

State of Minnesota

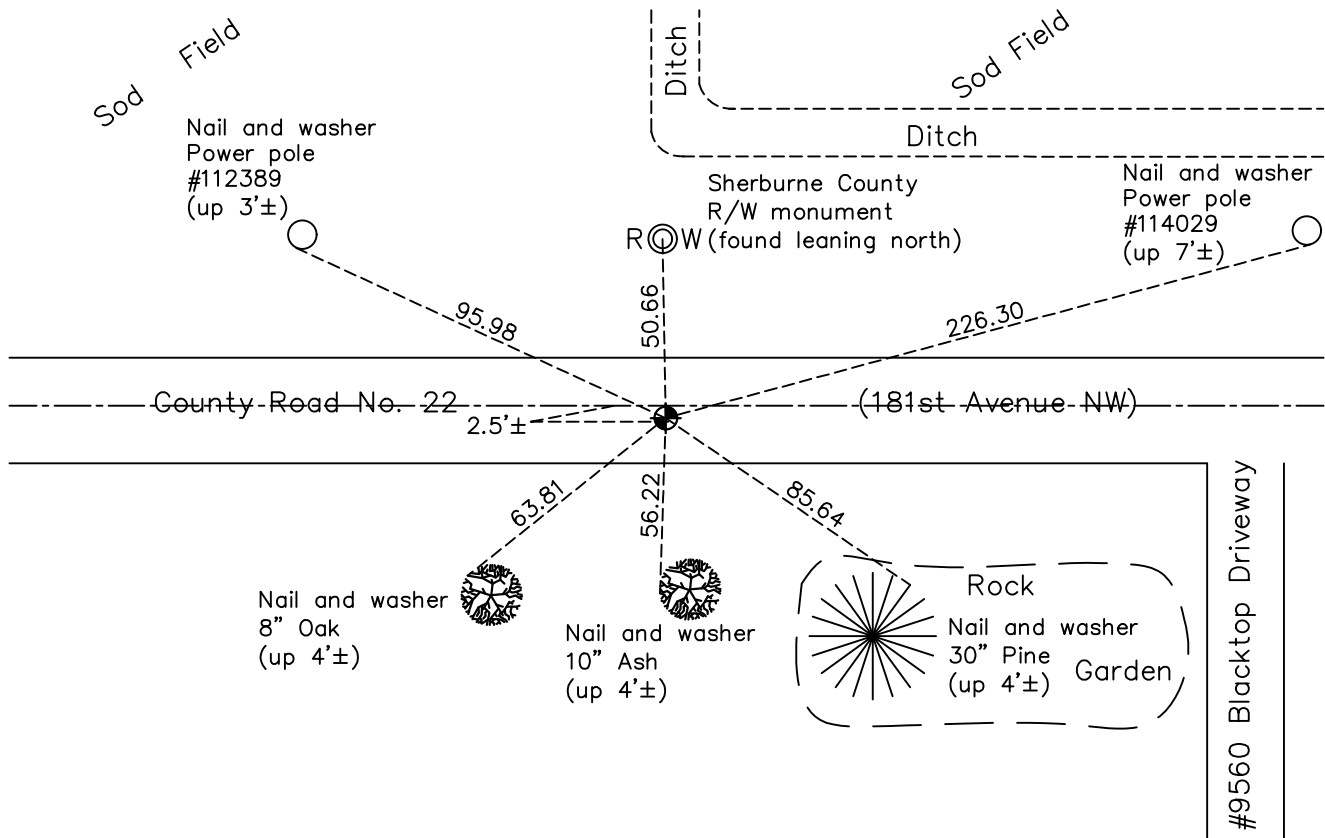
Northwest Corner of Sec. 6 Township 32 Range 25

On the 11th day of June, 1969, the described corner was evidenced by a granite monument with iron cap

and to perpetuate the location of said corner, at the exact location thereof, a permanent marker was placed consisting of a Sherburne County cast iron monument on top of the granite monument

AND on the 21st day of February, 2023, said permanent marker was found flush 2.5'± south of Center line, position coordinates verified correct by County RTK GPS method

Updated reference ties are as shown below.



Revision Date
02/24/2023

N.A.D. 1983 Coordinates
(1996 Adjustment)

County Project Coordinates	
Northing	<u>196369.1744</u>
Easting	<u>437132.6416</u>
Date	<u>9/01/99</u>

I hereby certify that this United States public land survey monument record is correct and complete to the best of my knowledge and belief.

David Zieglmeier Date 3/29/24

David Zieglmeier Anoka County Surveyor
Minnesota License Number 46179

HISTORY OF GOVERNMENT CORNER

Page No. 14

County of Anoka

State of Minnesota

Northwest Corner of Sec. 6 Township 32 Range 25

CORNER HISTORY:

August 20, 1968 - Found granite monument with iron cap and raised section lines and letters down 1.3'±. Set 1/2" iron pipe flush with the surface on top of monument and set P.K. nails 2.00' north and east of monument. Established ties to monument.

June 11, 1969 – Set cast iron monument flush with the surface on top of granite monument with P.K. nails 2.00' north and east of monument. Updated ties.

July 17, 1972 – Found cast iron monument and updated ties.

October 16, 1975 – Raised cast iron monument and updated ties.

June 21, 1976 – Found cast iron monument and updated ties.

June 15, 1979 – Found cast iron monument and updated ties.

August 13, 1982 – Found cast iron monument and updated ties.

July 22, 1985 – Found cast iron monument and updated ties.

June 6, 1986 – Found cast iron monument and updated ties.

August 4, 1993 – Found cast iron monument and updated ties.

September 1, 1999 – Found cast iron monument and established NAD 1983 (1996 Adjustment) Anoka County Project Coordinates by Static GPS methods. Updated ties.

June 13, 2000 – Sherburne County removed cast iron monument. Found granite monument with iron top and set construction ties prior to road construction.

September 6, 2000 – Found cast iron monument and updated ties.

April 27, 2010 – Found cast iron monument and updated ties.

June 18, 2015 – Found Sherburne County cast iron monument 2.5'± south of centerline and updated ties. Verified location of corner by VRS GPS methods.

June 8, 2020 – Found Sherburne County cast iron monument 2.5'± south of centerline and updated ties. Verified location of corner by VRS GPS methods.

October 20, 2022 – Found Sherburne County cast iron monument, verified position of monument by VRS GPS method and update ties.

February 21, 2023 – Found cast iron monument flush, 2.5'± south of center line and position coordinates were verified as correct by County RTK GPS method