

# CERTIFICATE OF LOCATION OF GOVERNMENT CORNER

County of Anoka

State of Minnesota

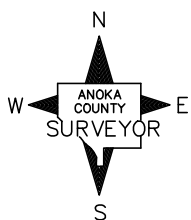
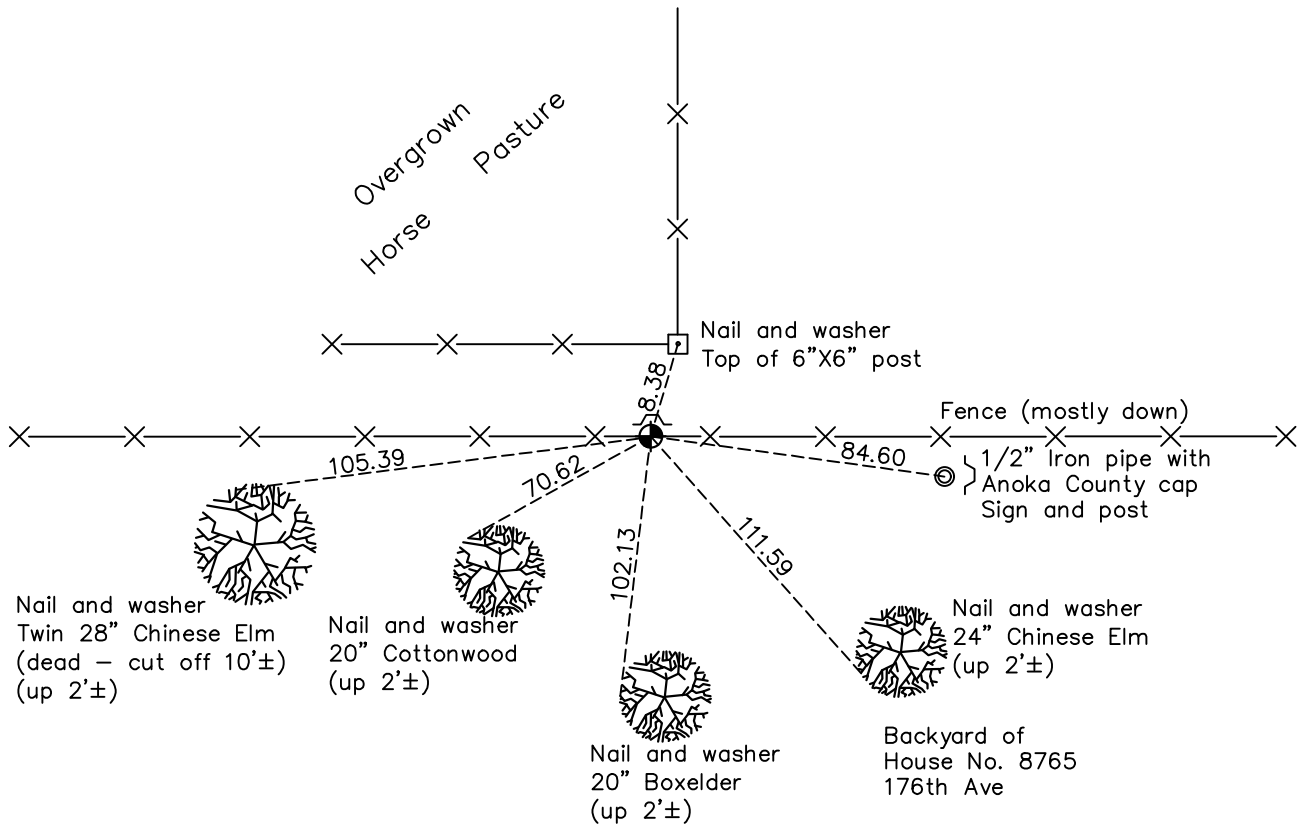
## East 1/4 Corner of Sec. 6 Township 32 Range 25

On the 18th day of December, 1969, the described corner was evidenced by area resurvey

and to perpetuate the location of said corner, at the exact location thereof, a permanent marker was placed consisting of a cast iron monument with a sign and post on the north side

AND on the 27th day of September, 2022, said permanent marker was found down 0.7'± with a sign and post on the north side and the ties were updated

Updated reference ties are as shown below.



Revision Date

12/21/2022

N.A.D. 1983 Coordinates  
(1996 Adjustment)

County Project Coordinates	
Northing	193713.1367
Easting	442435.9661
Date	12/30/99

I hereby certify that this United States public land survey monument record is correct and complete to the best of my knowledge and belief.

*David Zieglmeier* Date 2/22/23

David Zieglmeier Anoka County Surveyor

Minnesota License Number 46179

# HISTORY OF GOVERNMENT CORNER

Page No. 16

County of Anoka

State of Minnesota

## East 1/4 Corner of Sec. 6 Township 32 Range 25

### **CORNER HISTORY:**

**December 18, 1969** - Set cast iron monument flush with the surface using area resurvey and established ties to monument. Set steel sign post  $0.5' \pm$  north of monument.

July 31, 1972 – Found cast iron monument and updated ties.

June 21, 1976 – Found cast iron monument and updated ties.

June 15, 1979 – Found cast iron monument and updated ties.

August 29, 1979 – Set construction ties.

August 11, 1982 – Found cast iron monument and updated ties.

July 31, 1985 – Found cast iron monument and updated ties.

July 22, 1988 – Found cast iron monument flush with the surface with a sign and post on the north side and updated ties.

August 19, 1993 – Found cast iron monument and updated ties.

December 30, 1999 – Found cast iron monument with a sign and post on the north side and established NAD 1983 (1996 Adjustment) Anoka County Project Coordinates by Static GPS methods. Updated ties.

May 24, 2010 – Found cast iron monument down  $0.6' \pm$  with a post (no sign) on the north side and updated ties.

September 17, 2015 – Found cast iron monument down  $0.6' \pm$  with a sign and post on the north side and updated ties. Verified location of corner by VRS GPS methods.

June 10, 2020 – Found cast iron monument down  $0.8' \pm$  with a sign and post on the north side and updated ties.

September 27, 2022 – Found cast iron monument down  $0.7' \pm$ , verified position of monument by VRS GPS method and updated the ties.