

CERTIFICATE OF LOCATION OF GOVERNMENT CORNER

County of Anoka

State of Minnesota

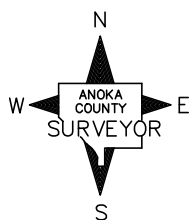
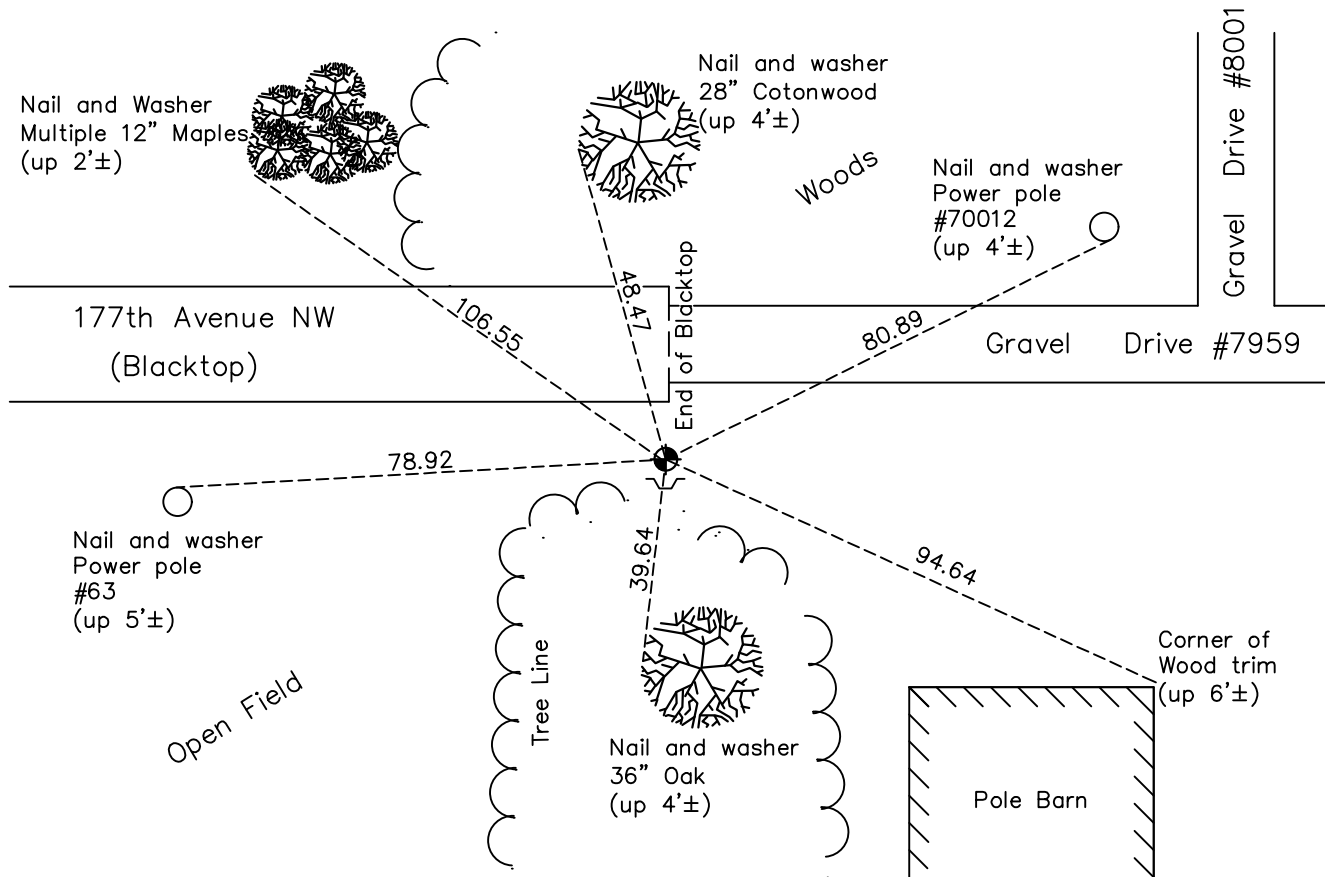
East 1/4 Corner of Sec. 5 Township 32 Range 25

On the 13th day of May, 1969, the described corner was evidenced by area resurvey

and to perpetuate the location of said corner, at the exact location thereof, a permanent marker was placed consisting of a cast iron monument

AND on the 26th day of September, 2022, said permanent marker was found up 0.1'± with a sign and post on the south side and the ties were updated

Updated reference ties are as shown below.



Revision Date
12/21/2022

N.A.D. 1983 Coordinates
 (1996 Adjustment)

County Project Coordinates	
Northing	<u>193707.1089</u>
Easting	<u>447681.1638</u>
Date	<u>1/03/00</u>

I hereby certify that this United States public land survey monument record is correct and complete to the best of my knowledge and belief.

David Zieglmeier Date 2/22/23

David Zieglmeier Anoka County Surveyor
 Minnesota License Number 46179

HISTORY OF GOVERNMENT CORNER

Page No. 17

County of Anoka

State of Minnesota

East 1/4 Corner of Sec. 5 Township 32 Range 25

CORNER HISTORY:

May 13, 1969 -Set cast iron monument flush with the surface and 1.5'± north of a power pole using area resurvey and established ties to monument.

July 25, 1972 – Found cast iron monument and updated ties.

June 21, 1976 – Found cast iron monument and updated ties.

June 15, 1979 – Found cast iron monument and updated ties.

August 11, 1982 – Found cast iron monument and updated ties.

July 22, 1985 – Found cast iron monument and updated ties.

July 6, 1988 – Found cast iron monument and updated ties.

August 6, 1993 – Found cast iron monument and updated ties.

January 3, 2000 – Found cast iron monument and established NAD 1983 (1996 Adjustment) Anoka County Project Coordinates by Static GPS methods. Updated ties.

April 15, 2010 – Found cast iron monument with sign and post on the south side and updated ties.

July 17, 2015 – Found cast iron monument up 0.1'± with a sign and post on the south side and updated ties.

June 5, 2020 – Found cast iron monument up 0.1'± with a sign and post on the south side and updated ties. Verified position of corner by VRS GPS methods.

September 26, 2022 – Found cast iron monument up 0.1'±, verified position of monument by VRS GPS method and updated the ties.