

CERTIFICATE OF LOCATION OF GOVERNMENT CORNER

County of Anoka

State of Minnesota

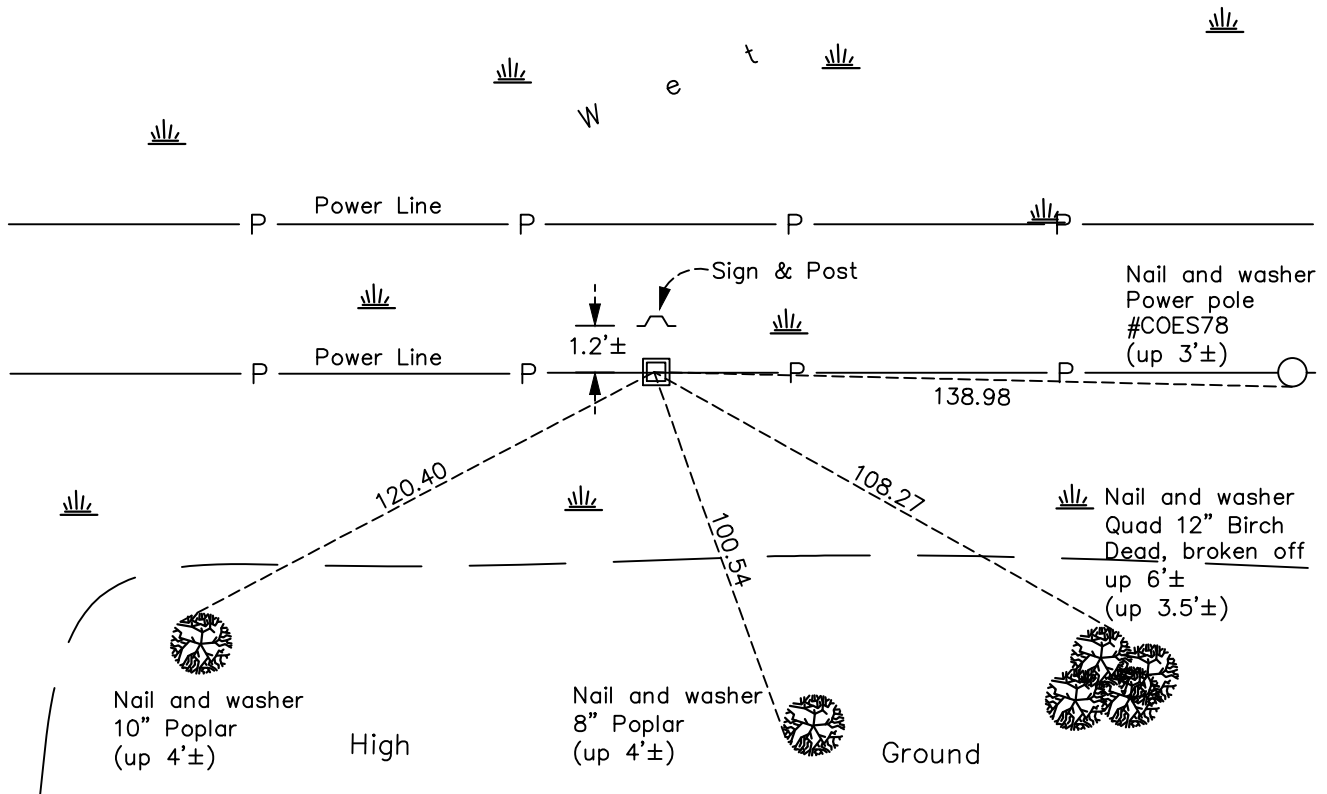
West 1/4 Corner of Sec. 3 Township 32 Range 25

On the 29th day of January, 2024, the described corner was evidenced by a red & white
Telspar

and to perpetuate the location of said corner, at the exact location thereof, a permanent marker was placed consisting of same 2"x 2"x 8' Telspar adding aluminum cap and punch mark, correcting leaning position and adjusted from being up 5'± to up 1'±.

AND on the 29th day of January, 2024, said permanent marker was measured with RTK GPS
method to verify position and ties were updated after adjusting.

Updated reference ties are as shown below.



Revision Date
3/25/2024

N.A.D. 1983 Coordinates
 (1996 Adjustment)

County Project Coordinates	
Northing	193667.9586
Easting	452870.3700
Date	3/06/00

I hereby certify that this United States public land survey monument record is correct and complete to the best of my knowledge and belief.
David Zieglmeier Date 3/28/24
 David Zieglmeier Anoka County Surveyor
 Minnesota License Number 46179

HISTORY OF GOVERNMENT CORNER

Page No. 18

County of Anoka

State of Minnesota

West 1/4 Corner of Sec. 3 Township 32 Range 25

CORNER HISTORY:

July 1850 - This corner was established by John Ryan, Deputy Surveyor. Ryan marked this position by "set quarter section post" with one bearing tree marked as an accessory.

1969 - Replaced found iron pipe with a red and white iron pipe and verified location of corner using area resurvey. Established ties to iron pipe.

1/24/79, 11/3/83, 7/6/88 - Found red and white iron pipe and updated ties.

March 6, 2000 - Found red and white iron pipe and established NAD 1983 (1996 Adjustment) Anoka County Project Coordinates by Static GPS methods. Updated ties.

May 25, 2010 - Found red and white iron pipe up 5'± and updated ties.

3/2/18, 1/19/21 - Found 2" square steel Telspar monument up 5'± with a sign attached facing west and updated ties. Verified position by VRS GPS methods.

January 29, 2024 - Found red and white 2" square Telspar up 5'± and leaning slightly to south. Adjusted same Telspar, added cap and punch mark, up 1'±. Set to published coordinates using RTK GPS method and historic ties. Updated ties after setting. Added sign and post to north side of monument, facing south. Job #24-100