

CERTIFICATE OF LOCATION OF GOVERNMENT CORNER

County of Anoka

State of Minnesota

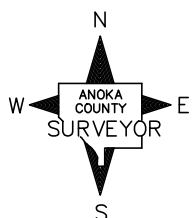
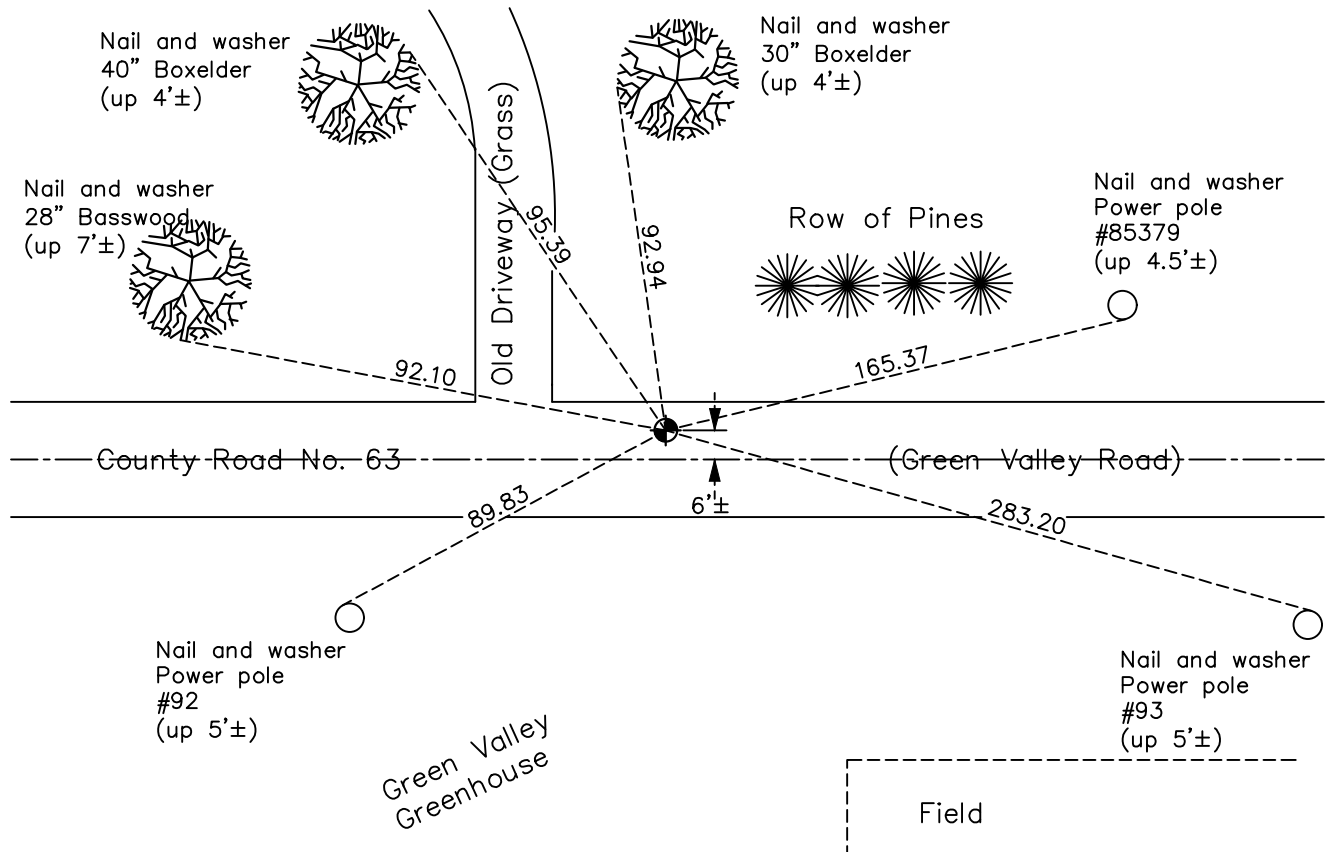
East 1/4 Corner of Sec. 3 Township 32 Range 25

On the 21st day of July, 1961, the described corner was evidenced by area resurvey

and to perpetuate the location of said corner, at the exact location thereof, a permanent marker was placed consisting of a cast iron monument

AND on the 23rd day of September, 2022, said permanent marker was found flush and the ties were updated

Updated reference ties are as shown below.



Revision Date
 12/21/2022

N.A.D. 1983 Coordinates
 (1996 Adjustment)

County Project Coordinates	
Northing	193618.5468
Easting	458167.6951
Date	9/01/99

I hereby certify that this United States public land survey monument record is correct and complete to the best of my knowledge and belief.
David Zieglmeier Date 2/22/23
 David Zieglmeier Anoka County Surveyor
 Minnesota License Number 46179

HISTORY OF GOVERNMENT CORNER

Page No. 19

County of Anoka

State of Minnesota

East 1/4 Corner of Sec. 3 Township 32 Range 25

CORNER HISTORY:

July 21, 1961 - Set cast iron monument using a straight line and prorated distance using old survey distance between the northeast corner and the southeast corner of Section 3 and established ties to monument.

August 10, 1964 – Found cast iron monument and updated ties.

June 10, 1969 – Found cast iron monument and updated ties. Set P.K. nails 2.00' north and east.

July 25, 1972 – Found cast iron monument and updated ties.

June 21, 1976 – Found cast iron monument and updated ties.

June 15, 1979 – Found cast iron monument and updated ties.

August 23, 1982 – Found cast iron monument and updated ties.

July 23, 1985 – Found cast iron monument and updated ties.

June 14, 1988 – Found cast iron monument and updated ties.

August 6, 1993 – Found cast iron monument and updated ties.

September 1, 1999 – Found cast iron monument and established NAD 1983 (1996 Adjustment) Anoka County Project Coordinates by Static GPS methods. Updated ties.

April 7, 2010 – Found cast iron monument 6'± north of centerline and updated ties.

May 9, 2014 – Updated ties and removed cast iron monument prior to road construction. Verified location of corner by VRS GPS methods.

August 25, 2014 – Set cast iron monument after road construction using ties. Verified location of corner by VRS GPS methods.

July 17, 2015 – Found cast iron monument 6'± north of centerline and updated ties.

June 11, 2020 – Found cast iron monument and updated ties. Verified position of corner by VRS GPS methods.

September 23, 2022 – Found cast iron monument flush, verified position of the monument by using VRS GPS method and updated the ties.