

CERTIFICATE OF LOCATION OF GOVERNMENT CORNER

County of Anoka

State of Minnesota

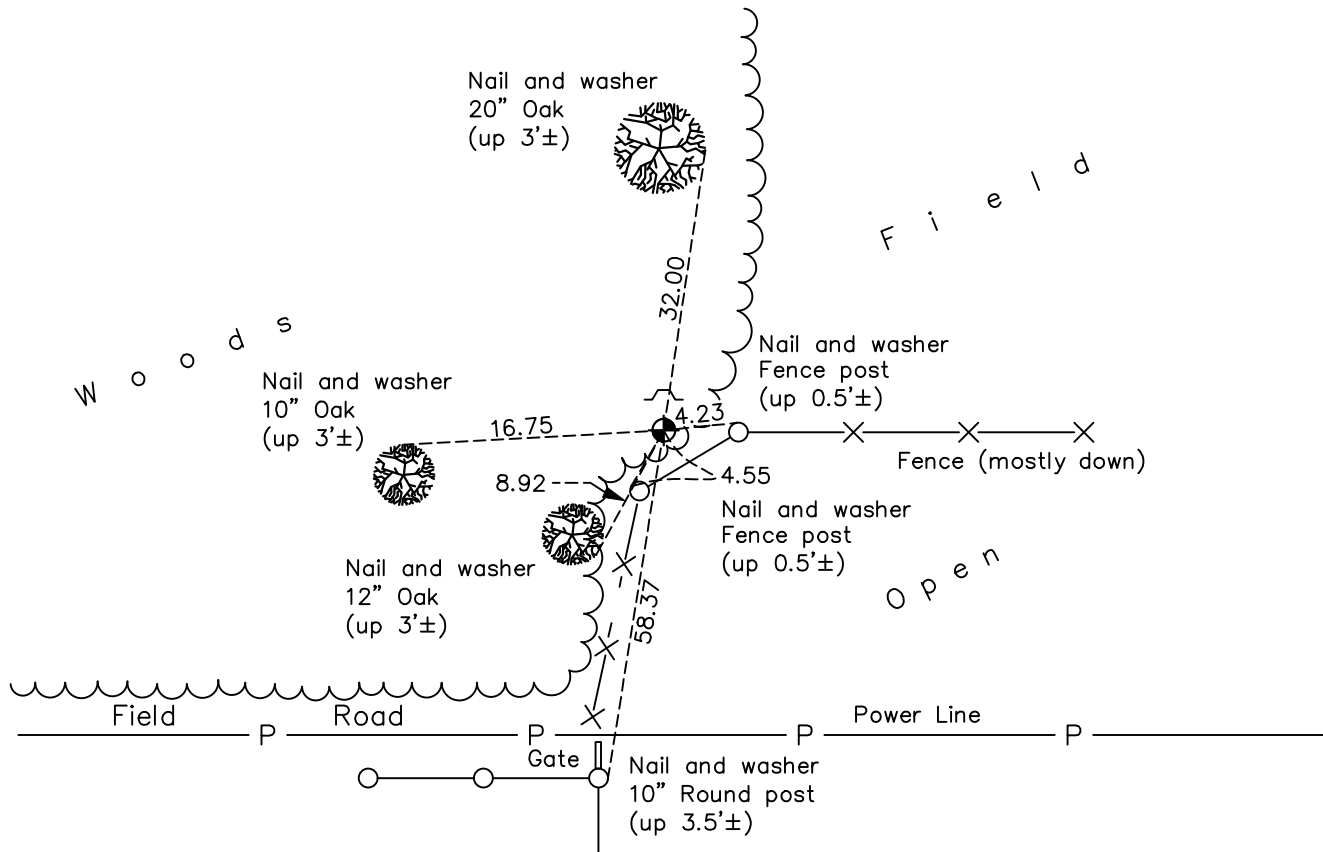
West 1/4 Corner of Sec. 1 Township 32 Range 25

On the 12th day of August, 1960, the described corner was evidenced by a well point

and to perpetuate the location of said corner, at the exact location thereof, a permanent marker was placed consisting of a cast iron monument

AND on the 29th day of September, 2022, said permanent marker was found flush with a sign and post on the north side and the ties were updated

Updated reference ties are as shown below.



N.A.D. 1983 Coordinates
(1996 Adjustment)

County Project Coordinates	
Northing	<u>193577.3614</u>
Easting	<u>463408.6988</u>
Date	<u>2/14/00</u>

I hereby certify that this United States public land survey monument record is correct and complete to the best of my knowledge and belief.

David Zieglmeier Date 2/22/23

David Zieglmeier Anoka County Surveyor
Minnesota License Number 46179

Revision Date
12/21/2022

HISTORY OF GOVERNMENT CORNER

Page No. 20

County of Anoka

State of Minnesota

West 1/4 Corner of Sec. 1 Township 32 Range 25

CORNER HISTORY:

May 25, 1946 - Cartwright found a concrete monument and established ties to monument.

August 12, 1960 – Replaced well point with a cast iron monument set flush with the surface. Updated ties.

August 10, 1964 – Found cast iron monument and updated ties.

June 9, 1969 – Found cast iron monument and updated ties.

July 25, 1972 – Found cast iron monument and updated ties.

June 21, 1976 – Found cast iron monument and updated ties.

June 15, 1979 – Found cast iron monument and updated ties.

August 18, 1982 – Found cast iron monument and updated ties.

July 23, 1985 – Found cast iron monument and updated ties.

July 13, 1988 – Found cast iron monument and updated ties.

August 16, 1993 – Found cast iron monument and updated ties.

February 14, 2000 – Found cast iron monument with sign and post on north side and established NAD 1983 (1996 Adjustment) Anoka County Project Coordinates by Static GPS methods. Updated ties.

May 26, 2010 – Found cast iron monument flush with the surface with sign and post on north side and updated ties.

September 18, 2015 – Found cast iron monument flush with the surface with sign and post on north side and updated ties.

June 15, 2020 – Found cast iron monument and updated ties.

September 29, 2022 – Found cast iron monument flush, verified position of monument by VRS GPS method and updated the ties.