

CERTIFICATE OF LOCATION OF GOVERNMENT CORNER

County of Anoka

State of Minnesota

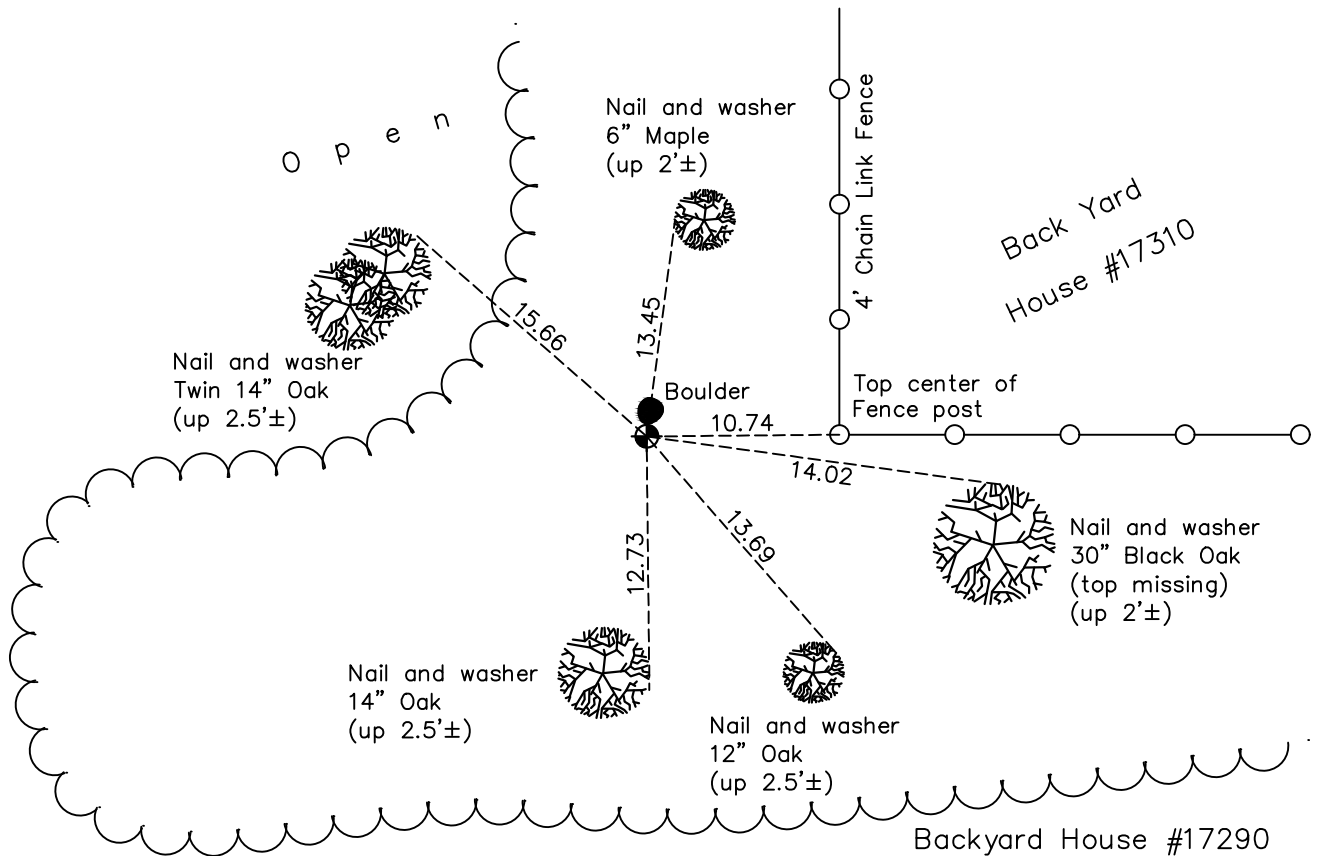
Southwest Corner of Sec. 1 Township 32 Range 25

On the 23rd day of June, 1976, the described corner was evidenced by a concrete monument

and to perpetuate the location of said corner, at the exact location thereof, a permanent marker was placed consisting of a cast iron monument

AND on the 23rd day of September, 2022, said permanent marker was found flush with the surface and updated the ties

Updated reference ties are as shown below.



Revision Date
12/27/2022

N.A.D. 1983 Coordinates
(1996 Adjustment)

County Project Coordinates	
Northing	<u>190952.9907</u>
Easting	<u>463395.3506</u>
Date	<u>2/15/00</u>

I hereby certify that this United States public land survey monument record is correct and complete to the best of my knowledge and belief.

David Zieglmeier Date 2/22/23

David Zieglmeier Anoka County Surveyor
Minnesota License Number 46179

HISTORY OF GOVERNMENT CORNER

Page No. 26

County of Anoka

State of Minnesota

Southwest Corner of Sec. 1 Township 32 Range 25

CORNER HISTORY:

August 8, 1945 - Cartwright found concrete monument and established ties to monument.

August 12, 1960 – Found concrete monument down 4” with an iron pipe on the north side and updated ties.

August 11, 1964 – Found concrete monument with an iron pipe on the north side and updated ties.

June 10, 1969 – Found concrete monument with an iron pipe on the north side and updated ties.

August 21, 1972 – Found concrete monument with an iron pipe on the north side and updated ties.

June 23, 1976 – Replaced concrete monument with a cast iron monument set flush with the surface. Updated ties.

June 18, 1979 – Found cast iron monument and updated ties.

August 20, 1982 – Found cast iron monument and updated ties.

November 8, 1983 – Found cast iron monument and updated ties.

July 23, 1985 – Found cast iron monument and updated ties.

June 14, 1988 – Found cast iron monument and updated ties.

August 13, 1993 – Found cast iron monument and updated ties.

February 15, 2000 – Found cast iron monument and established NAD 1983 (1996 Adjustment) Anoka County Project Coordinates by Static GPS methods. Updated ties.

May 6, 2010 – Found cast iron monument flush with the surface and updated ties.

September 18, 2015 – Found cast iron monument flush with the surface and updated ties.

June 1, 2020 – Found cast iron monument flush with the surface and updated ties.

September 23, 2022 – Found cast iron monument flush, verified position by VRS GPS method and updated the ties.