

CERTIFICATE OF LOCATION OF GOVERNMENT CORNER

County of Anoka

State of Minnesota

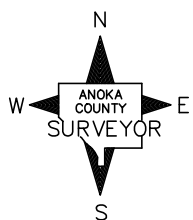
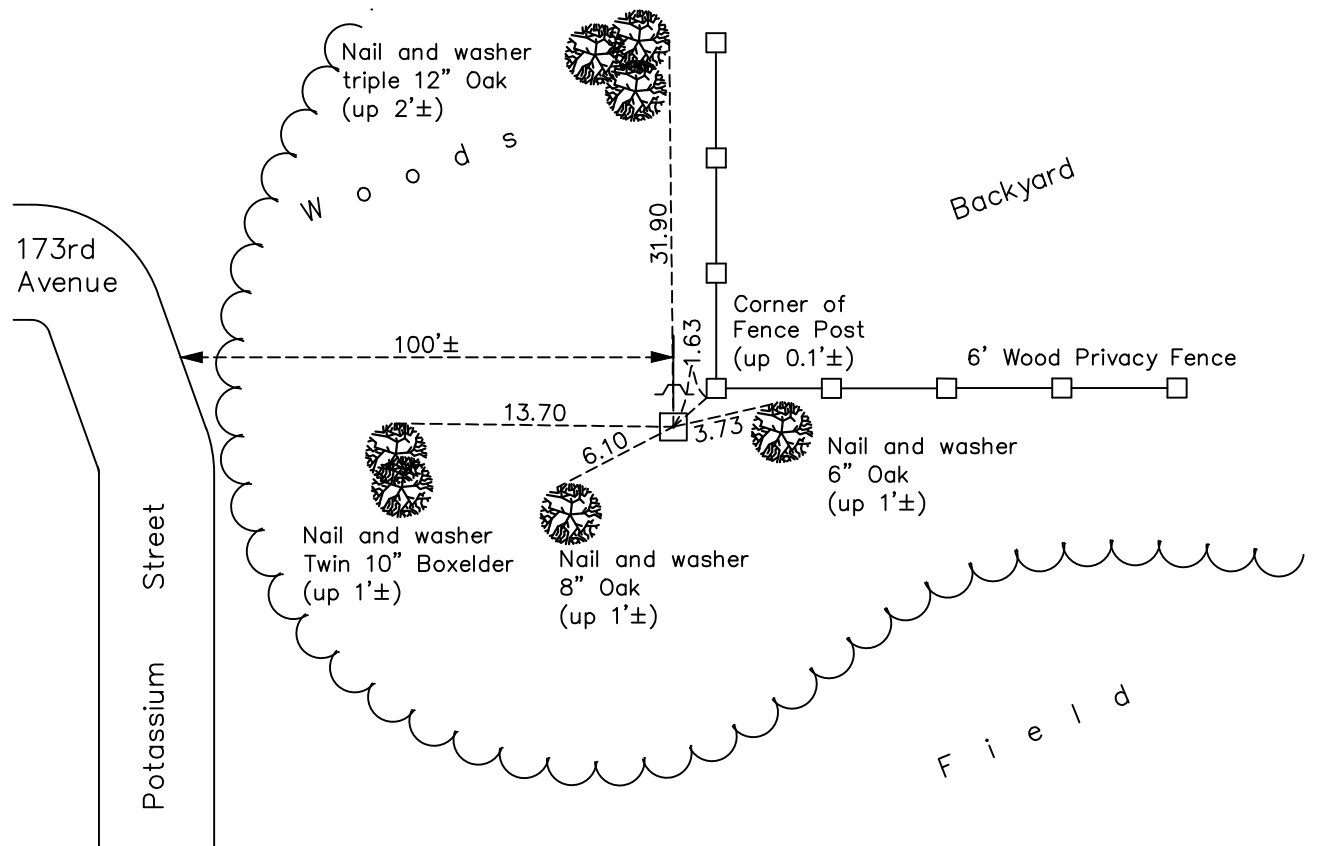
South $\frac{1}{4}$ Corner of Sec. 2 Township 32 Range 25

On the 18th day of April, 1962, the described corner was evidenced by a concrete monument

and to perpetuate the location of said corner, at the exact location thereof, a permanent marker was placed consisting of the same concrete monument

AND on the 23rd day of September, 2022, said permanent marker was found down 0.1' with a sign and post on the north side and the ties were updated

Updated reference ties are as shown below.



Revision Date
12/27/2022

N.A.D. 1983 Coordinates
 (1996 Adjustment)

County Project Coordinates	
Northing	<u>190945.0553</u>
Easting	<u>460757.4839</u>
Date	<u>2/22/00</u>

I hereby certify that this United States public land survey monument record is correct and complete to the best of my knowledge and belief.

David Zieglmeier Date 2/22/23

David Zieglmeier Anoka County Surveyor
 Minnesota License Number 46179

HISTORY OF GOVERNMENT CORNER

Page No. 27

County of Anoka

State of Minnesota

South 1/4 Corner of Sec. 2 Township 32 Range 25

CORNER HISTORY:

August 8, 1945 - Cartwright found concrete monument and established ties to monument.

April 18, 1962 – Found 4” square concrete monument down 0.2’± with a 1.5 ” iron pipe up 0.2’± and 1.12’ north of monument. Updated ties.

August 10, 1964 – Found concrete monument and updated ties.

June 9, 1969 – Found concrete monument and updated ties.

July 31, 1972 – Found concrete monument and updated ties.

June 22, 1976 – Found concrete monument and updated ties.

June 18, 1979 – Found concrete monument and updated ties.

August 18, 1983 – Found concrete monument and updated ties.

July 22, 1985 – Found concrete monument and updated ties.

June 14, 1988 – Found concrete monument and updated ties.

August 6, 1993 – Found concrete monument with a sign and post on the north side and updated ties.

February 22, 2000 – Found concrete monument and established NAD 1983 (1996 Adjustment) Anoka County Project Coordinates by Static GPS methods.

April 23, 2010 – Found concrete monument flush with the surface with a sign and post on the north side and updated ties.

July 24, 2015 – Found concrete monument flush with the surface with a sign and post on the north side and updated ties.

June 1, 2020 – Found concrete monument down 0.2’± from surface with a sign and post on the north side and updated the ties.

September 23, 2022 – Found concrete monument down 0.1’± from the surface, verified position by VRS GPS method and updated the ties.