

# CERTIFICATE OF LOCATION OF GOVERNMENT CORNER

County of Anoka

State of Minnesota

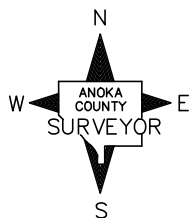
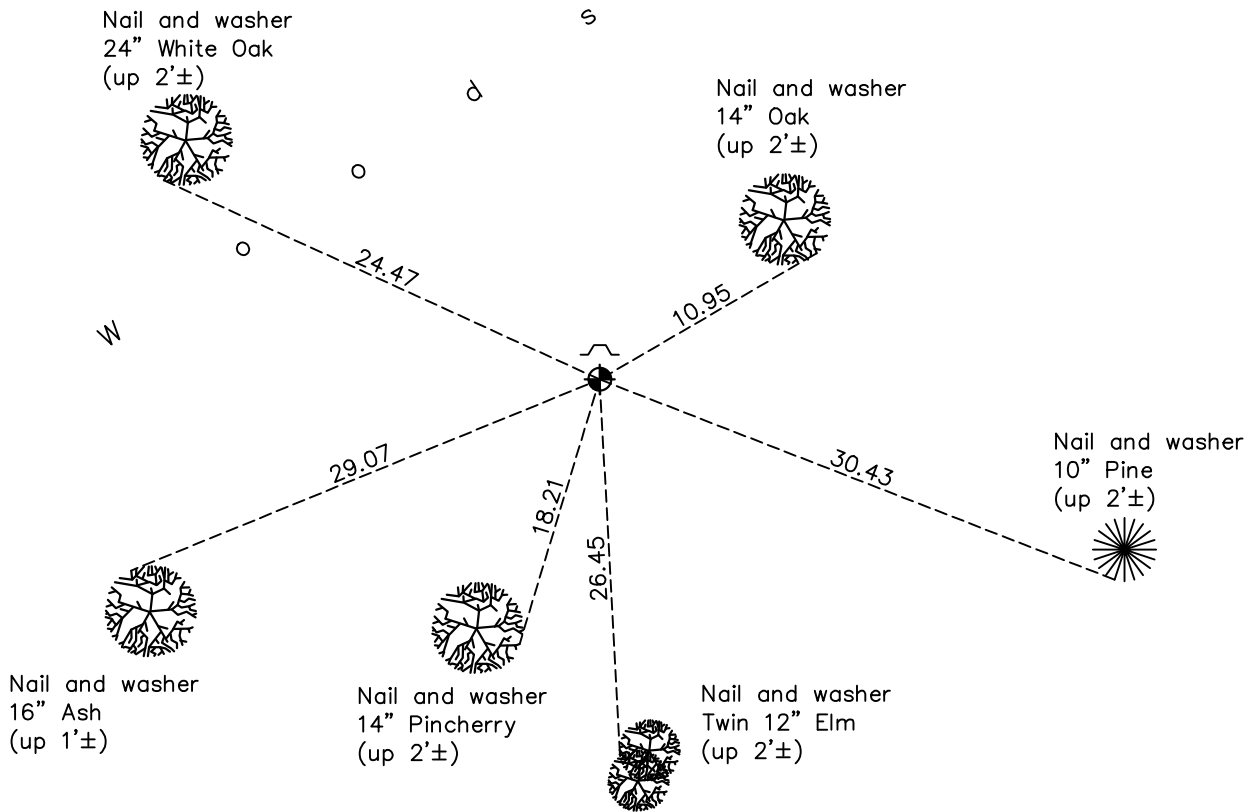
## Northeast Corner of Sec. 10 Township 32 Range 25

On the 18th day of June, 1969, the described corner was evidenced by a 1 1/2" iron pipe

and to perpetuate the location of said corner, at the exact location thereof, a permanent marker was placed consisting of a cast iron monument

AND on the 21st day of February, 2023, said permanent marker was found up 0.2' with a sign and post on the north side, position coordinates verified correct by County RTK GPS method

Updated reference ties are as shown below.



Revision Date  
 2/24/2023

N.A.D. 1983 Coordinates  
 (1996 Adjustment)

County Project Coordinates	
Northing	<u>190932.1240</u>
Easting	<u>458132.9867</u>
Date	<u>2/28/00</u>

I hereby certify that this United States public land survey monument record is correct and complete to the best of my knowledge and belief.  
David Zieglmeier Date 3/29/24  
 David Zieglmeier Anoka County Surveyor  
 Minnesota License Number 46179

# HISTORY OF GOVERNMENT CORNER

Page No. 28

County of Anoka

State of Minnesota

## Northeast Corner of Sec. 10 Township 32 Range 25

### **CORNER HISTORY:**

**May 10, 1961** - Found 1.5" iron pipe on north-south fence line. Farmer living east of corner indicated it was the corner. He indicated that he has lived on his property since 1936 and that a survey was performed in 1939±. Established ties to iron pipe.

August 11, 1964 – Found 1.5" iron pipe up 0.5'± and updated ties.

June 18, 1969 – Replaced 1.5" iron pipe with cast iron monument set up 0.1'±. Updated ties.

August 23, 1972 – Found cast iron monument and updated ties.

June 22, 1976 – Found cast iron monument and updated ties.

July 3, 1979 – Found cast iron monument and updated ties.

August 18, 1983 – Found cast iron monument and updated ties.

July 12, 1988 – Found cast iron monument and updated ties.

August 13, 1993 – Found cast iron monument and updated ties.

February 28, 2000 – Found cast iron monument with sign and post on the north side and established NAD 1983 (1996 Adjustment) Anoka County Project Coordinates by Static GPS methods. Updated ties.

May 26, 2010 – Found cast iron monument up 0.2'± with a sign and post on the north side and updated ties.

July 24, 2015 – Found cast iron monument up 0.2'± with a sign and post on the north side and updated ties.

June 1, 2020 – Found cast iron monument up 0.2'± with a sign and post on the north side and updated ties.

September 23, 2022 – Found cast iron monument up 0.2'± and updated the ties.

February 21, 2023 – Found cast iron monument up 0.2'± and position coordinates were verified as correct by County RTK GPS method.