

CERTIFICATE OF LOCATION OF GOVERNMENT CORNER

County of Anoka

State of Minnesota

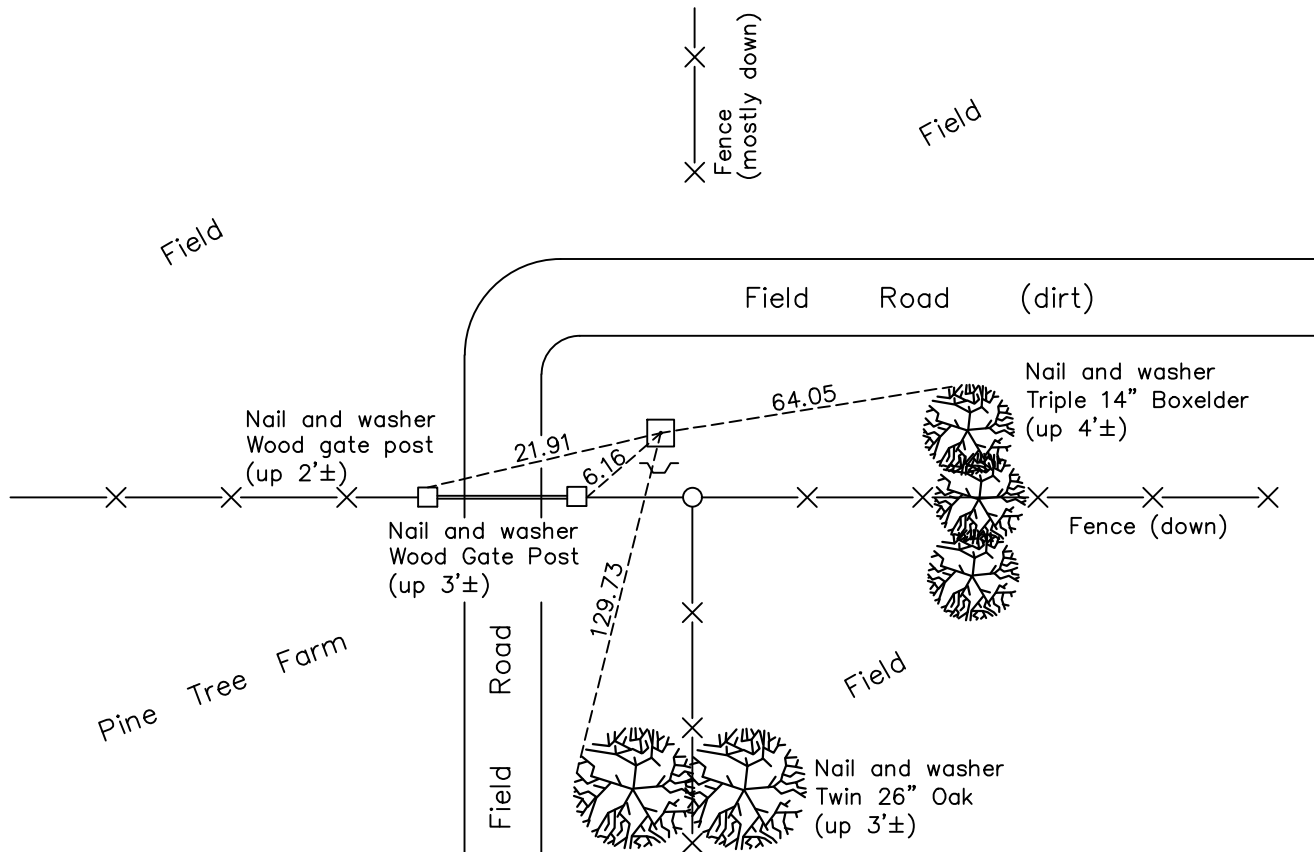
Southeast Corner of Sec. 4 Township 32 Range 25

On the 29th day of March, 1961, the described corner was evidenced by a granite monument

and to perpetuate the location of said corner, at the exact location thereof, a permanent marker was placed consisting of the same granite monument

AND on the 23rd day of September, 2022, said permanent marker was found down 1.0'± with a sign and post on the south side and the ties were updated

Updated reference ties are as shown below.



Revision Date
 12/27/2022

N.A.D. 1983 Coordinates
 (1996 Adjustment)

County Project Coordinates	
Northing	190957.1138
Easting	452792.5536
Date	1/04/00

I hereby certify that this United States public land survey monument record is correct and complete to the best of my knowledge and belief.

David Zieglmeier Date 2/22/23

David Zieglmeier Anoka County Surveyor
 Minnesota License Number 46179

HISTORY OF GOVERNMENT CORNER

Page No. 30

County of Anoka

State of Minnesota

Southeast Corner of Sec. 4 Township 32 Range 25

CORNER HISTORY:

March 29, 1961 - Found 6" x 6" x 2' granite monument leaning east. Straightened monument and set flush with the surface. Set 18" iron pipe on north edge of monument and established ties to monument.

August 3, 1964 – Found granite monument and updated ties.

June 11, 1969 – Found granite monument and updated ties.

July 3, 1972 – Found granite monument and updated ties.

June 22, 1976 – Found granite monument flush with the surface with an iron pipe on north side. Updated ties.

June 2, 1978 – Found granite monument flush with the surface with an iron pipe on north side. Updated ties prior to fence construction.

June 28, 1979 – Found granite monument and updated ties.

July 15, 1980 – Found granite monument and updated ties.

August 11, 1982 – Found granite monument and updated ties.

November 8, 1983 – Found granite monument and updated ties.

July 18, 1985 – Found granite monument and updated ties.

July 7, 1988 – Found granite monument and updated ties.

August 23, 1993 – Found granite monument and updated ties.

January 4, 2000 – Found granite monument and established NAD 1983 (1996 Adjustment) Anoka County Project Coordinates by Static GPS methods. Updated ties.

May 3, 2010 – Found granite monument down 0.8'± with a sign and post on the south side and updated ties.

September 21, 2015 – Found granite monument down 0.8'± with a sign and post on the south side and updated ties. Verified location of corner by VRS GPS methods.

June 3, 2020 – Found granite monument down 0.8'± with a sign and post on the south side and updated ties. Verified location of corner by VRS GPS methods.

September 23, 2022 – Found granite monument down 1.0'±, verified position by VRS GPS method and the ties were updated.