

CERTIFICATE OF LOCATION OF GOVERNMENT CORNER

County of Anoka

State of Minnesota

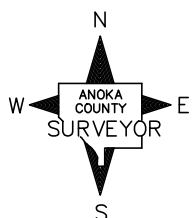
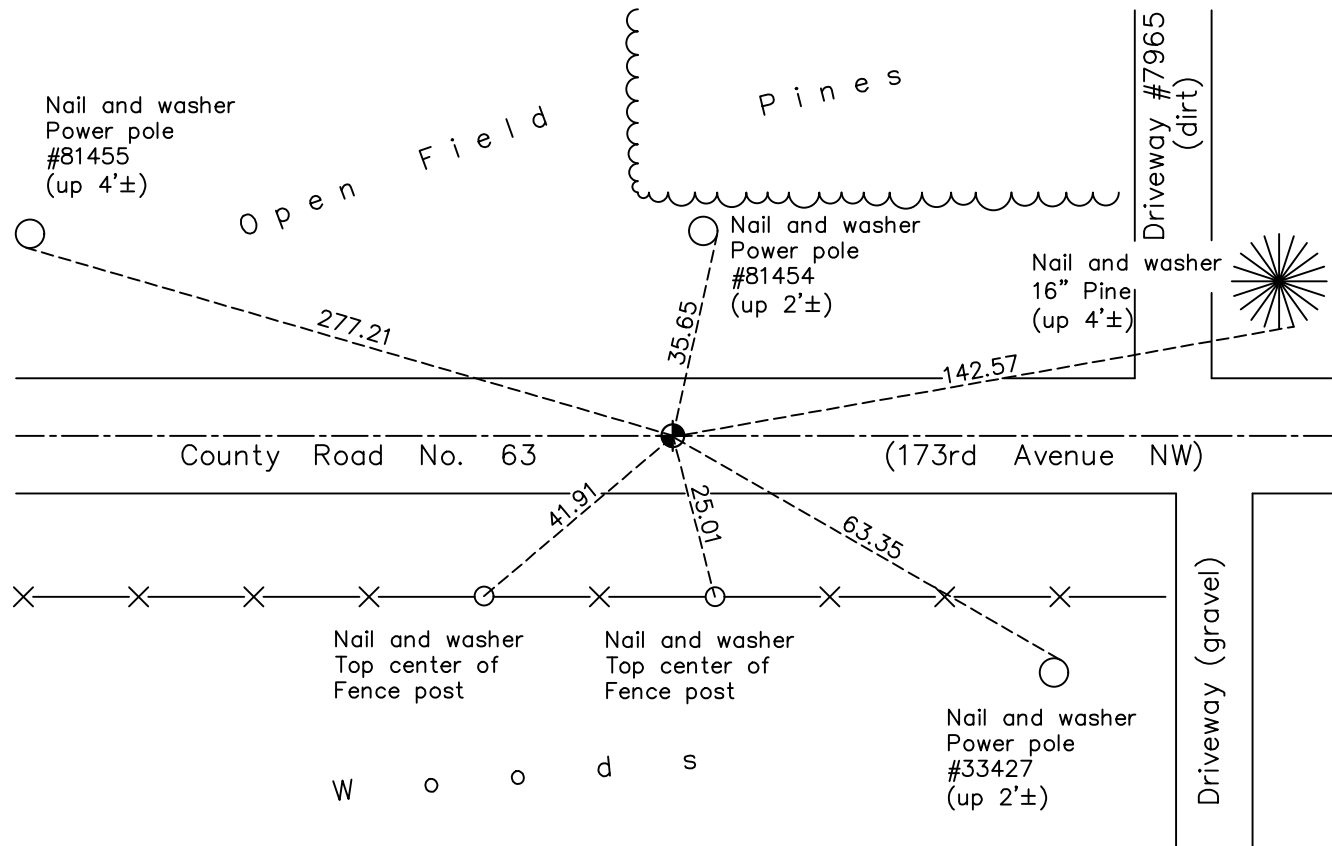
Southeast Corner of Sec. 5 Township 32 Range 25

On the 12th day of May, 1969, the described corner was evidenced by area resurvey

and to perpetuate the location of said corner, at the exact location thereof, a permanent marker was placed consisting of a cast iron monument

AND on the 26th day of September, 2022, said permanent marker was found flush and the ties were updated

Updated reference ties are as shown below.



Revision Date
12/27/2022

N.A.D. 1983 Coordinates
(1996 Adjustment)

County Project Coordinates	
Northing	<u>191057.4926</u>
Easting	<u>447628.7349</u>
Date	<u>9/01/99</u>

I hereby certify that this United States public land survey monument record is correct and complete to the best of my knowledge and belief.

David Zieglmeier Date 2/22/23

David Zieglmeier Anoka County Surveyor
Minnesota License Number 46179

HISTORY OF GOVERNMENT CORNER

Page No. 32

County of Anoka

State of Minnesota

Southeast Corner of Sec. 5 Township 32 Range 25

CORNER HISTORY:

May 12, 1969 -Set cast iron monument flush with the surface using area resurvey and established ties to monument.

July 17, 1972 – Found cast iron monument and updated ties.

June 23, 1976 – Found cast iron monument and updated ties.

June 18, 1979 – Found cast iron monument and updated ties.

August 20, 1982 – Found cast iron monument and updated ties.

June 7, 1988 – Found cast iron monument and updated ties.

August 6, 1993 – Found cast iron monument and updated ties.

September 1, 1999 – Found cast iron monument and established NAD 1983 (1996 Adjustment) Anoka County Project Coordinates by Static GPS methods. Updated ties.

April 12, 2010 – Found cast iron monument flush with the surface and on centerline and updated ties.

July 14, 2015 – Found cast iron monument and updated ties. Verified location of corner by VRS GPS methods.

June 5, 2020 – Found cast iron monument and updated ties. Verified location of corner by VRS GPS methods.

September 26, 2022 – Found cast iron monument flush, verified position by VRS GPS method and the ties were updated.