

CERTIFICATE OF LOCATION OF GOVERNMENT CORNER

County of Anoka

State of Minnesota

South 1/4 Corner of Sec. 5 Township 32 Range 25

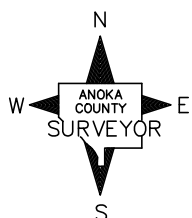
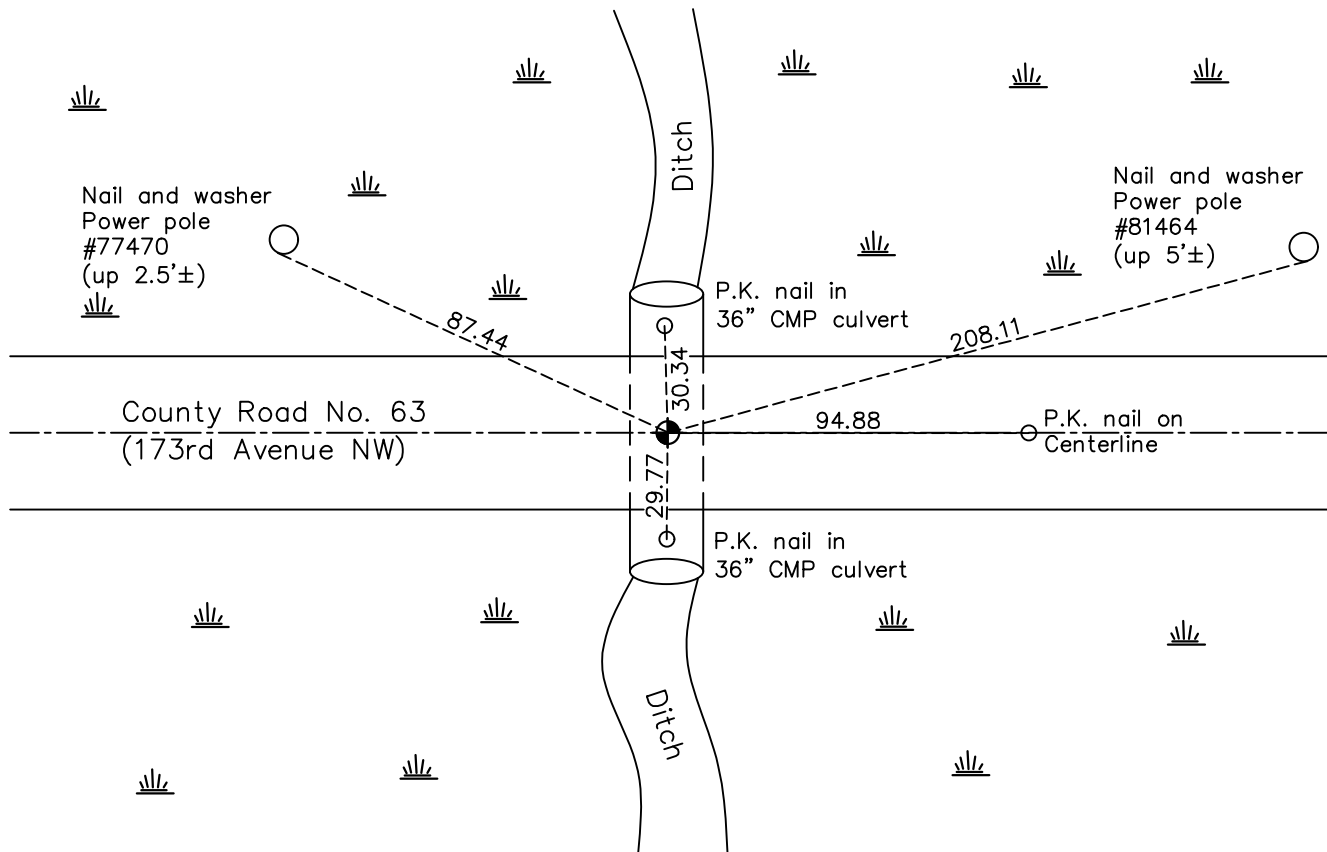
On the 12th day of May, 1969, the described corner was evidenced by area resurvey

and to perpetuate the location of said corner, at the exact location thereof, a permanent marker was placed consisting of a cast iron monument

West

AND on the 27th day of September, 2022, said permanent marker was found flush and the ties were updated

Updated reference ties are as shown below.



Revision Date
 12/27/2022

N.A.D. 1983 Coordinates
 (1996 Adjustment)

County Project Coordinates	
Northing	191053.2576
Easting	445003.3650
Date	9/01/99

I hereby certify that this United States public land survey monument record is correct and complete to the best of my knowledge and belief.
David Zieglmeier Date 2/22/23
 David Zieglmeier Anoka County Surveyor
 Minnesota License Number 46179

HISTORY OF GOVERNMENT CORNER

Page No. 33

County of Anoka

State of Minnesota

South 1/4 Corner of Sec. 5 Township 32 Range 25

CORNER HISTORY:

May 12, 1969 -Set cast iron monument flush with the surface using area resurvey and established ties to monument.

July 17, 1972 – Found cast iron monument and updated ties.

June 22, 1976 – Found cast iron monument and updated ties.

July 15, 1977 – Reset position of corner with cast iron monument set flush with the surface and on centerline of road after road construction. Verified position by distances to corners west and east.

June 18, 1979 – Found cast iron monument and updated ties.

August 20, 1982 – Found cast iron monument and updated ties.

May 26, 1992 – Replaced cast iron monument with a new cast iron monument set flush with the surface. Also set P.K. nails 2.00' west and south of monument and updated ties.

August 6, 1993 – Found cast iron monument and updated ties.

September 1, 1999 – Found cast iron monument and established NAD 1983 (1996 Adjustment) Anoka County Project Coordinates by Static GPS methods. Updated ties.

April 12, 2010 – Found cast iron monument flush with the surface and updated ties.

July 14, 2015 – Found cast iron monument flush with the surface and updated ties. Verified location of corner by VRS GPS methods.

June 4, 2020 – Found cast iron monument flush with the surface and updated ties. Verified location of corner by VRS GPS methods.

September 27, 2022 – Found cast iron monument flush, verified position by VRS GPS method and the ties were updated.