

CERTIFICATE OF LOCATION OF GOVERNMENT CORNER

County of Anoka

State of Minnesota

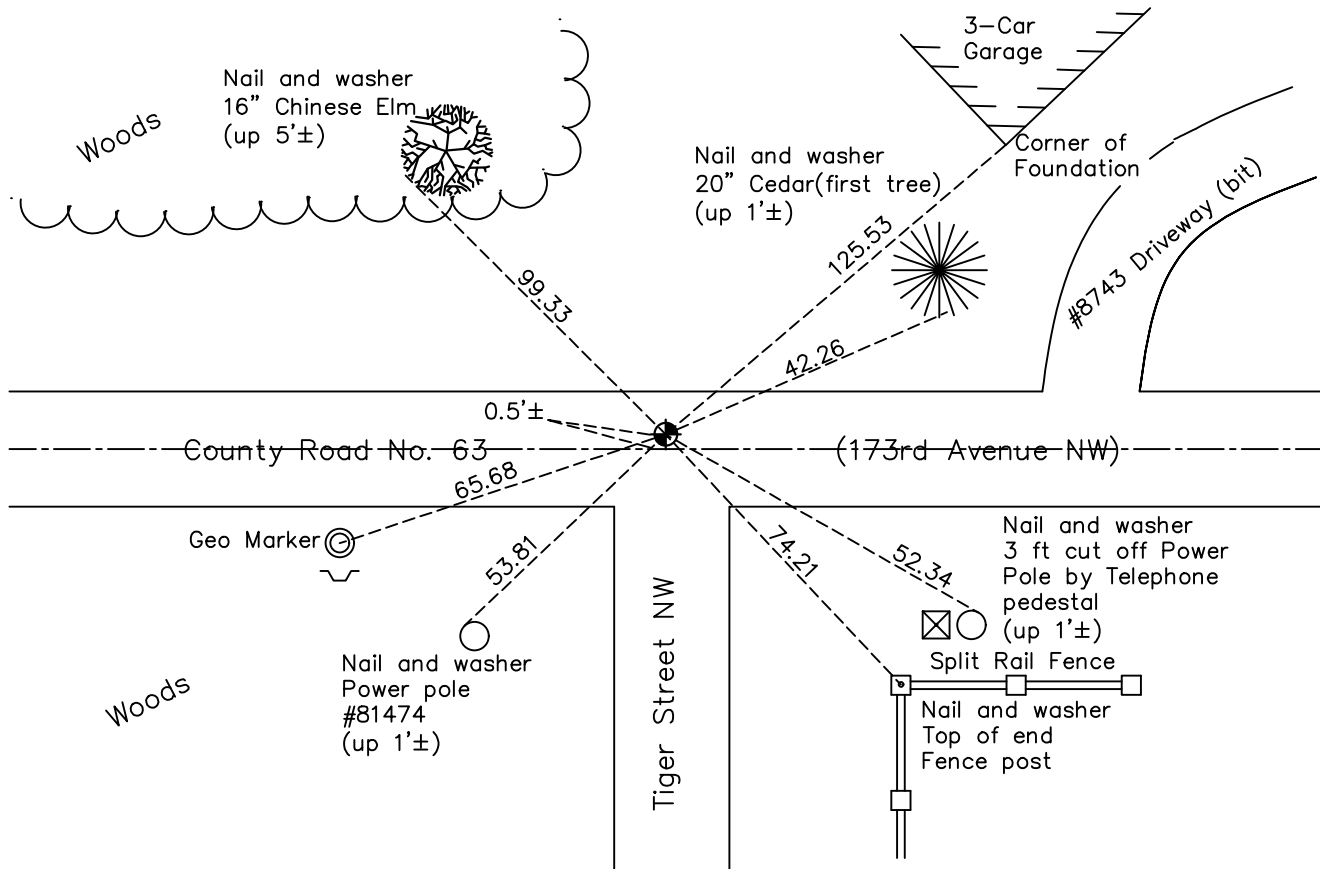
Southeast Corner of Sec. 6 Township 32 Range 25

On the 11th day of June, 1969, the described corner was evidenced by 1/2" iron pipe

and to perpetuate the location of said corner, at the exact location thereof, a permanent marker was placed consisting of a cast iron monument

AND on the 27th day of September, 2022, said permanent marker was found flush and 0.5'± North of the centerline. The ties were updated

Updated reference ties are as shown below.



Revision Date
12/27/2022

N.A.D. 1983 Coordinates
(1996 Adjustment)

County Project Coordinates	
Northing	<u>191051.5239</u>
Easting	<u>442378.1755</u>
Date	<u>9/01/99</u>

I hereby certify that this United States public land survey monument record is correct and complete to the best of my knowledge and belief.

David Zieglmeier Date 2/22/23

David Zieglmeier Anoka County Surveyor
Minnesota License Number 46179

HISTORY OF GOVERNMENT CORNER

Page No. 34

County of Anoka

State of Minnesota

Southeast Corner of Sec. 6 Township 32 Range 25

CORNER HISTORY:

November 27, 1968 - Replaced P.K. nail set by E.C. Bather with a 1/2" iron pipe and updated ties.

June 11, 1969 - Replaced 1/2" iron pipe with a cast iron monument set flush with the surface and updated ties.

July 17, 1972 – Found cast iron monument and updated ties.

September 11, 1972 – Found cast iron monument and raised to flush with the surface. Updated ties.

June 18, 1979 – Found cast iron monument and updated ties.

August 20, 1982 – Found cast iron monument and updated ties.

June 6, 1988 – Found cast iron monument and updated ties.

August 6, 1993 – Found cast iron monument and updated ties.

September 1, 1999 – Found cast iron monument and established NAD 1983 (1996 Adjustment) Anoka County Project Coordinates by Static GPS methods. Updated ties.

April 13, 2010 – Found cast iron monument flush with the surface and updated ties.

July 14, 2015 – Found cast iron monument flush with the surface and 0.5'± north of centerline. Verified location of corner by VRS GPS methods and updated ties.

June 4, 2020 – Found cast iron monument flush with the surface and 0.5'± north of centerline. Verified location of corner by VRS GPS methods and updated ties.

September 27, 2022 – Found cast iron monument flush with the surface and 0.5'± North of the centerline. Verified position by VRS GPS method and updated ties.