

# CERTIFICATE OF LOCATION OF GOVERNMENT CORNER

County of Anoka

State of Minnesota

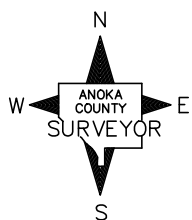
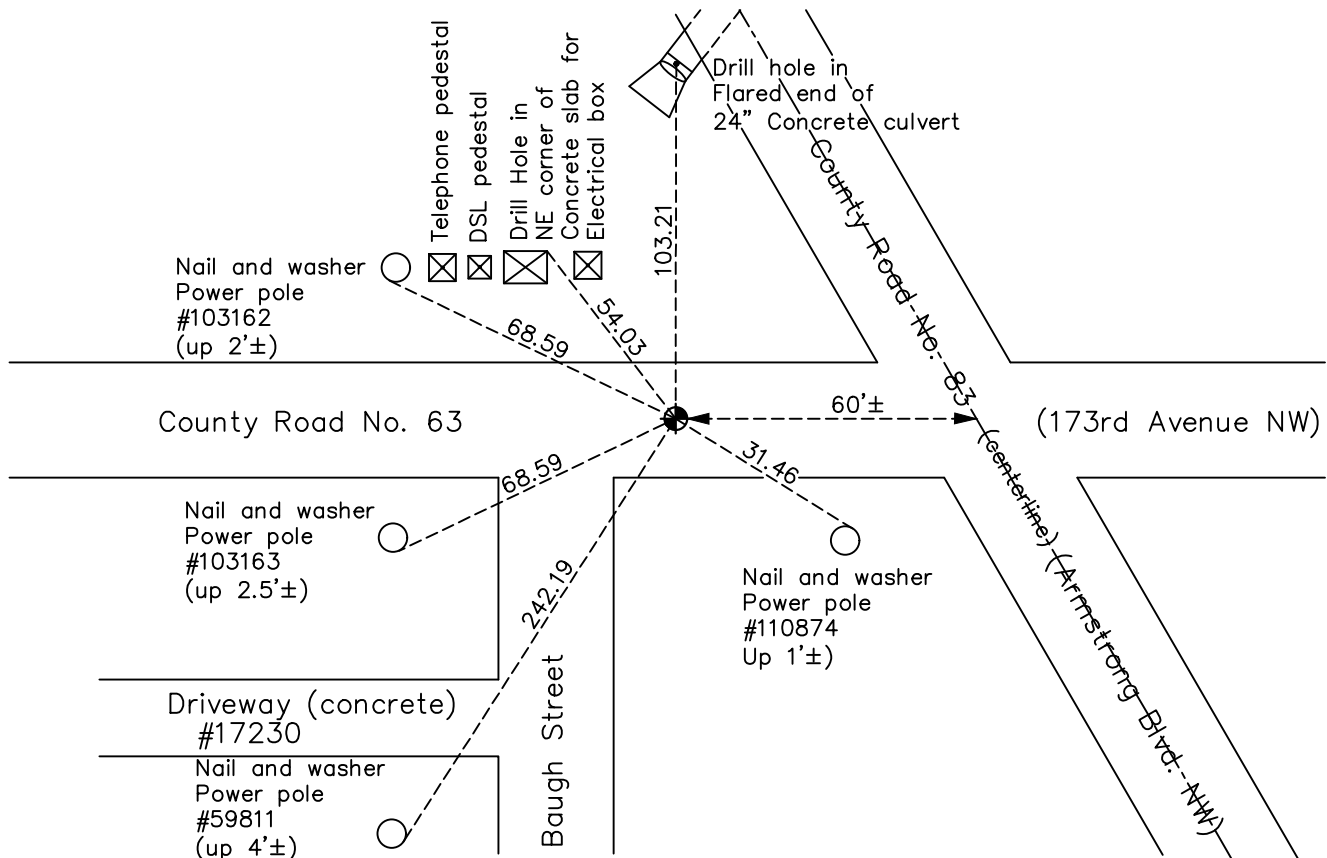
## South 1/4 Corner of Sec. 6 Township 32 Range 25

On the 7th day of November, 1968, the described corner was evidenced by area resurvey

and to perpetuate the location of said corner, at the exact location thereof, a permanent marker was placed consisting of a cast iron monument

AND on the 27th day of September, 2022, said permanent marker was found flush and the ties were updated

Updated reference ties are as shown below.



Revision Date  
12/27/2022

N.A.D. 1983 Coordinates  
(1996 Adjustment)

County Project Coordinates	
Northing	<u>191084.3224</u>
Easting	<u>439739.5848</u>
Date	<u>9/01/99</u>

I hereby certify that this United States public land survey monument record is correct and complete to the best of my knowledge and belief.

*David Zieglmeier* Date 2/22/23

David Zieglmeier Anoka County Surveyor  
Minnesota License Number 46179

# HISTORY OF GOVERNMENT CORNER

Page No. 35

County of Anoka

State of Minnesota

## South 1/4 Corner of Sec. 6 Township 32 Range 25

### **CORNER HISTORY:**

**November 7, 1968** -Set cast iron monument down 0.2'± using area resurvey and established ties to monument. Monument is on intersection of centerlines extended south and west.

June 11, 1969 – Found cast iron monument and updated ties.

July 17, 1972 – Found cast iron monument and updated ties.

June 22, 1976 – Found cast iron monument and updated ties.

June 18, 1979 – Found cast iron monument and updated ties.

August 19, 1982 – Found cast iron monument and updated ties.

May 1, 1990 – Set construction ties prior to road construction.

August 29, 1990 – Found cast iron monument and updated ties after road construction.

August 6, 1993 – Found cast iron monument and updated ties.

September 1, 1999 – Found cast iron monument and established NAD 1983 (1996 Adjustment) Anoka County Project Coordinates by Static GPS methods. Updated ties.

April 13, 2010 – Found cast iron monument flush with the surface and updated ties.

July 17, 2015 – Found cast iron monument and updated ties. Verified location of corner by VRS GPS methods.

June 8, 2020 – Found cast iron monument and updated ties. Verified location of corner by VRS GPS methods.

September 27, 2022 – Found cast iron monument, verified position by VRS GPS method and the ties were updated.