

CERTIFICATE OF LOCATION OF GOVERNMENT CORNER

County of Anoka

State of Minnesota

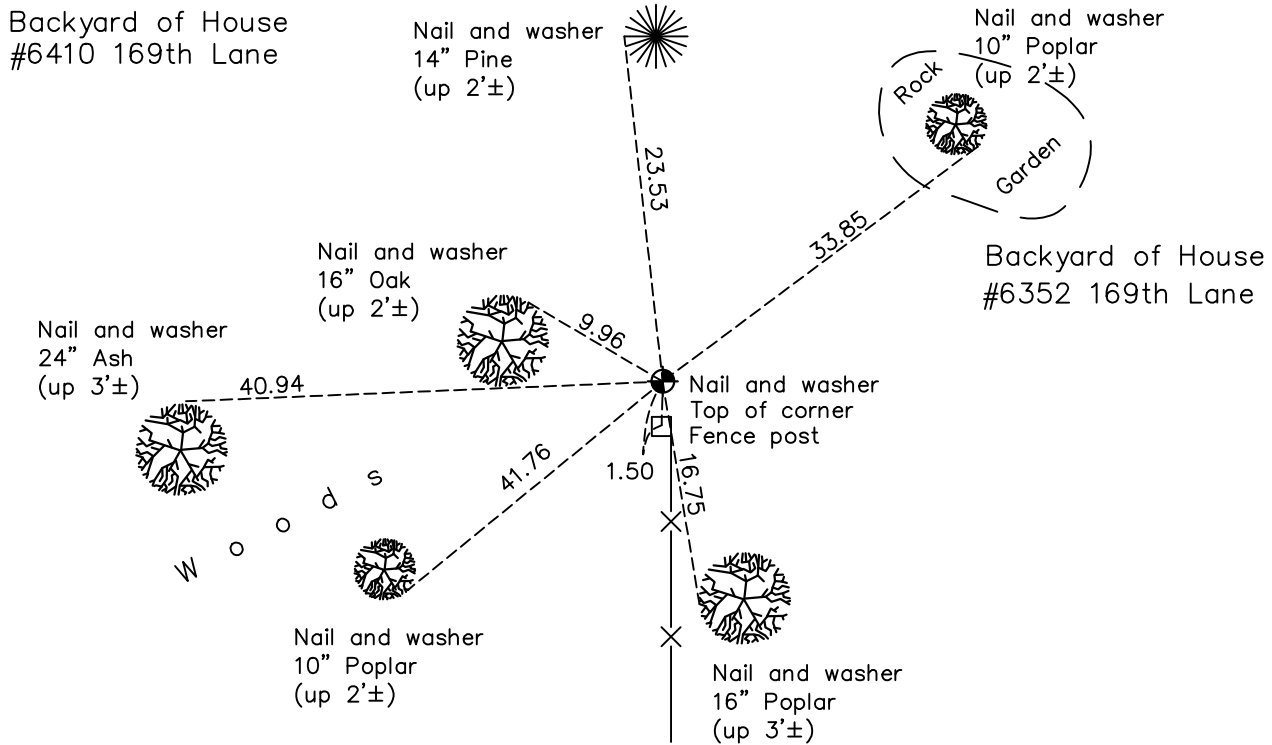
East 1/4 Corner of Sec. 10 Township 32 Range 25

On the 25th day of July, 1961, the described corner was evidenced by area resurvey

and to perpetuate the location of said corner, at the exact location thereof, a permanent marker was placed consisting of a cast iron monument

AND on the 28th day of September, 2022, said permanent marker was found down 0.2' and the ties were updated

Updated reference ties are as shown below.



Revision Date
 12/30/22

N.A.D. 1983 Coordinates
 (1996 Adjustment)

County Project Coordinates	
Northing	188299.1649
Easting	458119.5230
Date	3/27/00

I hereby certify that this United States public land survey monument record is correct and complete to the best of my knowledge and belief.

David Zieglmeier Date 2/22/23

David Zieglmeier Anoka County Surveyor
 Minnesota License Number 46179

HISTORY OF GOVERNMENT CORNER

Page No. 42

County of Anoka

State of Minnesota

East 1/4 Corner of Sec. 10 Township 32 Range 25

CORNER HISTORY:

July 25, 1961 - Set cast iron monument using a straight line and equal distance between the NE corner and the SE corner of Section 10 and established ties to monument.

August 11, 1964 – Found cast iron monument and updated ties.

June 18, 1969 – Found cast iron monument up 0.1'± and updated ties.

August 17, 1972 – Found cast iron monument and updated ties.

June 25, 1976 – Found cast iron monument and updated ties.

July 2, 1979 – Found cast iron monument and updated ties.

August 20, 1982 – Found cast iron monument and updated ties.

November 9, 1983 – Found cast iron monument and updated ties.

November 15, 1983 – Found cast iron monument and updated ties.

July 22, 1985 – Found cast iron monument and updated ties.

July 12, 1988 – Found cast iron monument and updated ties.

August 13, 1993 – Found cast iron monument and updated ties.

March 27, 2000 – Found cast iron monument and established NAD 1983 (1996 Adjustment) Anoka County Project Coordinates by Static GPS methods. Updated ties.

May 12, 2010 – Found cast iron monument and updated ties.

September 4, 2015 – Found cast iron monument and updated ties.

June 1, 2020 – Found cast iron monument down 0.2'± and updated ties

September 28, 2022 – Found cast iron monument down 0.2'±, verified position by VRS GPS method and the ties were updated.