

CERTIFICATE OF LOCATION OF GOVERNMENT CORNER

County of Anoka

State of Minnesota

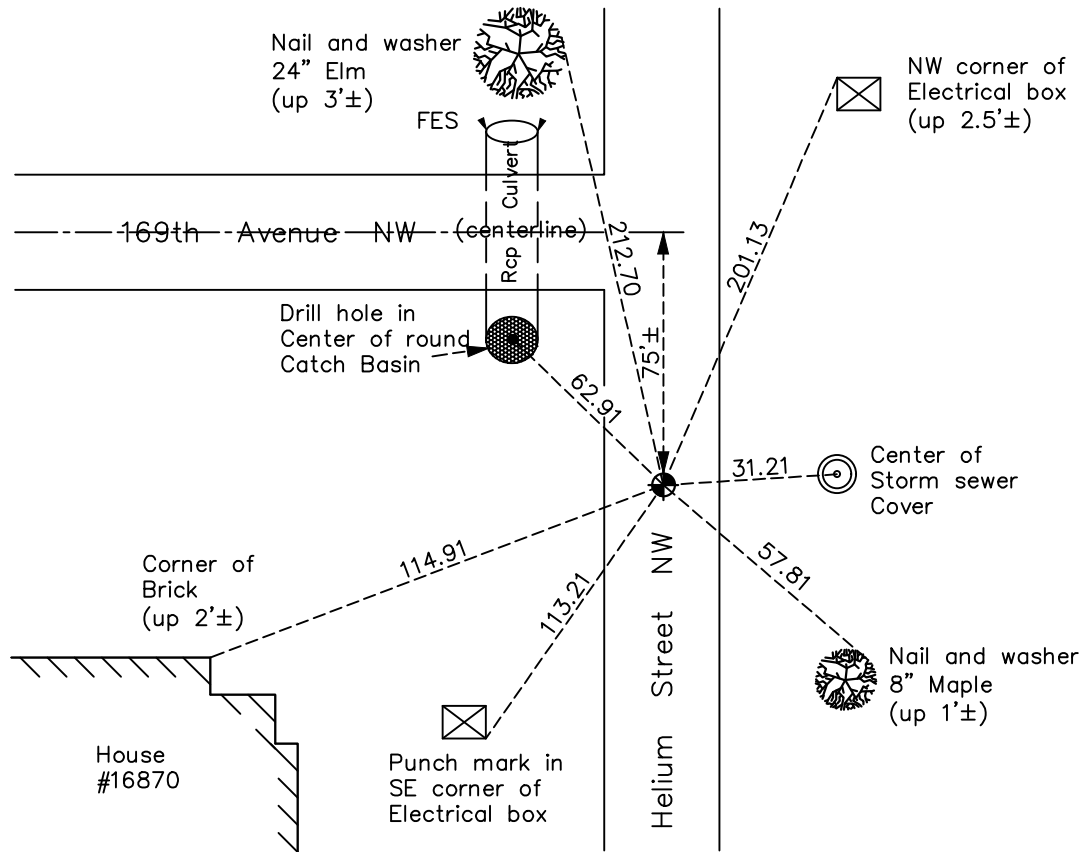
West 1/4 Corner of Sec. 12 Township 32 Range 25

On the 8th day of May, 1967, the described corner was evidenced by a concrete monument

and to perpetuate the location of said corner, at the exact location thereof, a permanent marker was placed consisting of a cast iron monument

AND on the 28th day of September, 2022, said permanent marker was found down 0.10'± and the ties were updated

Updated reference ties are as shown below.



Revision Date
 12/30/22

N.A.D. 1983 Coordinates
 (1996 Adjustment)

County Project Coordinates	
Northing	188313.2849
Easting	463386.2197
Date	12/29/99

I hereby certify that this United States public land survey monument record is correct and complete to the best of my knowledge and belief.
David Zieglmeier Date 2/22/23
 David Zieglmeier Anoka County Surveyor
 Minnesota License Number 46179

HISTORY OF GOVERNMENT CORNER

Page No. 43

County of Anoka

State of Minnesota

West 1/4 Corner of Sec. 12 Township 32 Range 25

CORNER HISTORY:

August 8, 1945 - Cartwright found concrete monument. Established ties to monument.

October 2, 1963 – Found concrete monument missing.

May 8, 1967 – Set cast iron monument flush with the surface and 1.5'± east of north-south fence line using area resurvey and established ties to monument.

June 10, 1969 – Found cast iron monument and updated ties.

August 2, 1972 – Found cast iron monument and updated ties.

March 30, 1976 – Found cast iron monument leaning with one tie remaining. Reset cast iron monument using remaining tie and distance to NW corner of Section 12. Updated ties.

June 29, 1976 – Set construction ties and removed cast iron monument prior to road construction. Replaced cast iron monument with iron pipe.

June 18, 1979 – Found iron pipe and updated ties.

July 9, 1980 – Set cast iron monument flush with surface after road construction using construction ties. Set P.K. nails 2.00' north and east of monument.

August 18, 1982 – Found cast iron monument and updated ties.

August 13, 1993 – Found cast iron monument and updated ties.

December 29, 1999 – Found cast iron monument and established NAD 1983 (1996 Adjustment) Anoka County Project Coordinates by Static GPS methods. Updated ties.

August 12, 2004 – Found cast iron monument and updated ties.

September 7, 2005 – Found cast iron monument and updated ties.

April 15, 2010 – Found cast iron monument flush with the surface and updated ties.

August 12, 2015 – Found cast iron monument down 0.1'± and updated ties.

May 29, 2020 – Found cast iron monument down 0.1'±, updated ties and verified corner position by VRS GPS methods.

September 28, 2022 – Found cast iron monument down 0.1'±, updated ties and verified corner position by VRS GPS methods.