

CERTIFICATE OF LOCATION OF GOVERNMENT CORNER

County of Anoka

State of Minnesota

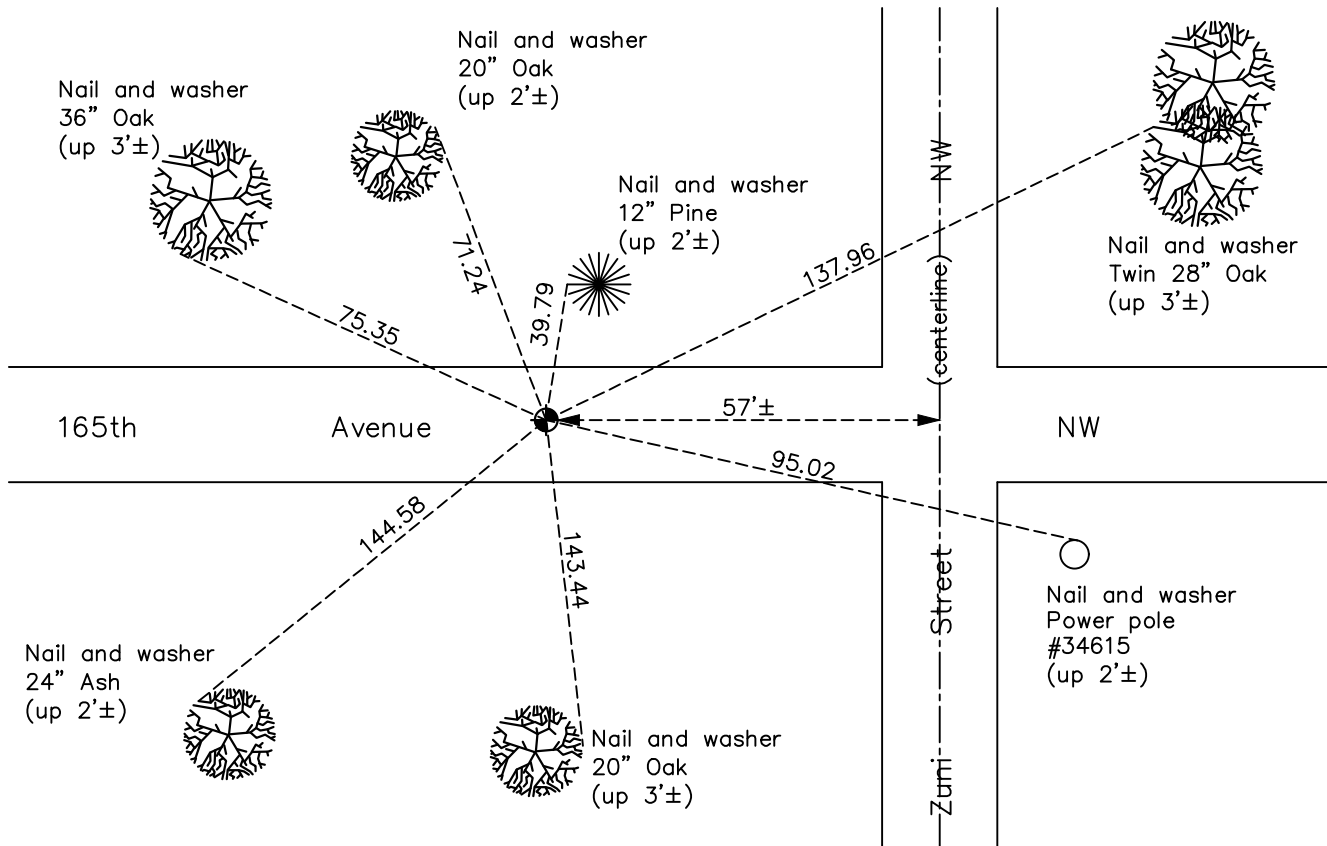
South 1/4 Corner of Sec. 12 Township 32 Range 25

On the 9th day of May, 1967, the described corner was evidenced by area resurvey

and to perpetuate the location of said corner, at the exact location thereof, a permanent marker was placed consisting of a cast iron monument

AND on the 17th day of October, 2022, said permanent marker was found flush and the ties were updated

Updated reference ties are as shown below.



Revision Date
 12/30/22

N.A.D. 1983 Coordinates
 (1996 Adjustment)

County Project Coordinates	
Northing	185662.6208
Easting	465995.8646
Date	1/05/00

I hereby certify that this United States public land survey monument record is correct and complete to the best of my knowledge and belief.
David Zieglmeier Date 2/22/23
 David Zieglmeier Anoka County Surveyor
 Minnesota License Number 46179

HISTORY OF GOVERNMENT CORNER

Page No. 46

County of Anoka

State of Minnesota

South 1/4 Corner of Sec. 12 Township 32 Range 25

CORNER HISTORY:

May 9, 1967 – Set cast iron monument using area resurvey and established ties to monument.

May 17, 1968 – Added and updated ties and removed cast iron monument prior to road construction.

July 30, 1968 – Set cast iron monument down 0.6'± after road construction and updated ties.

June 18, 1969 – Found cast iron monument down 0.7'± and updated ties.

August 16, 1972 – Found cast iron monument and updated ties.

June 25, 1976 – Found cast iron monument and updated ties.

June 18, 1979 – Found cast iron monument and updated ties.

August 18, 1982 – Found cast iron monument and updated ties.

July 14, 1985 – Found cast iron monument and updated ties.

January 5, 2000 – Found cast iron monument and established NAD 1983 (1996 Adjustment) Anoka County Project Coordinates by Static GPS methods. Updated ties.

May 28, 2010 – Found cast iron monument and updated ties.

August 12, 2015 – Found cast iron monument and updated ties. Verified location of corner by VRS GPS methods.

March 16, 2020 – Found cast iron monument and updated ties. Verified location of corner by VRS GPS methods.

October 17, 2022 – Found cast iron monument flush and updated ties. Verified location of corner by VRS GPS methods.