

# CERTIFICATE OF LOCATION OF GOVERNMENT CORNER

County of Anoka

State of Minnesota

## Witness Corner of Sec. 12 Township 32 Range 25

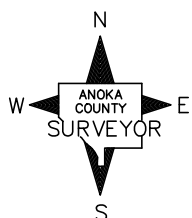
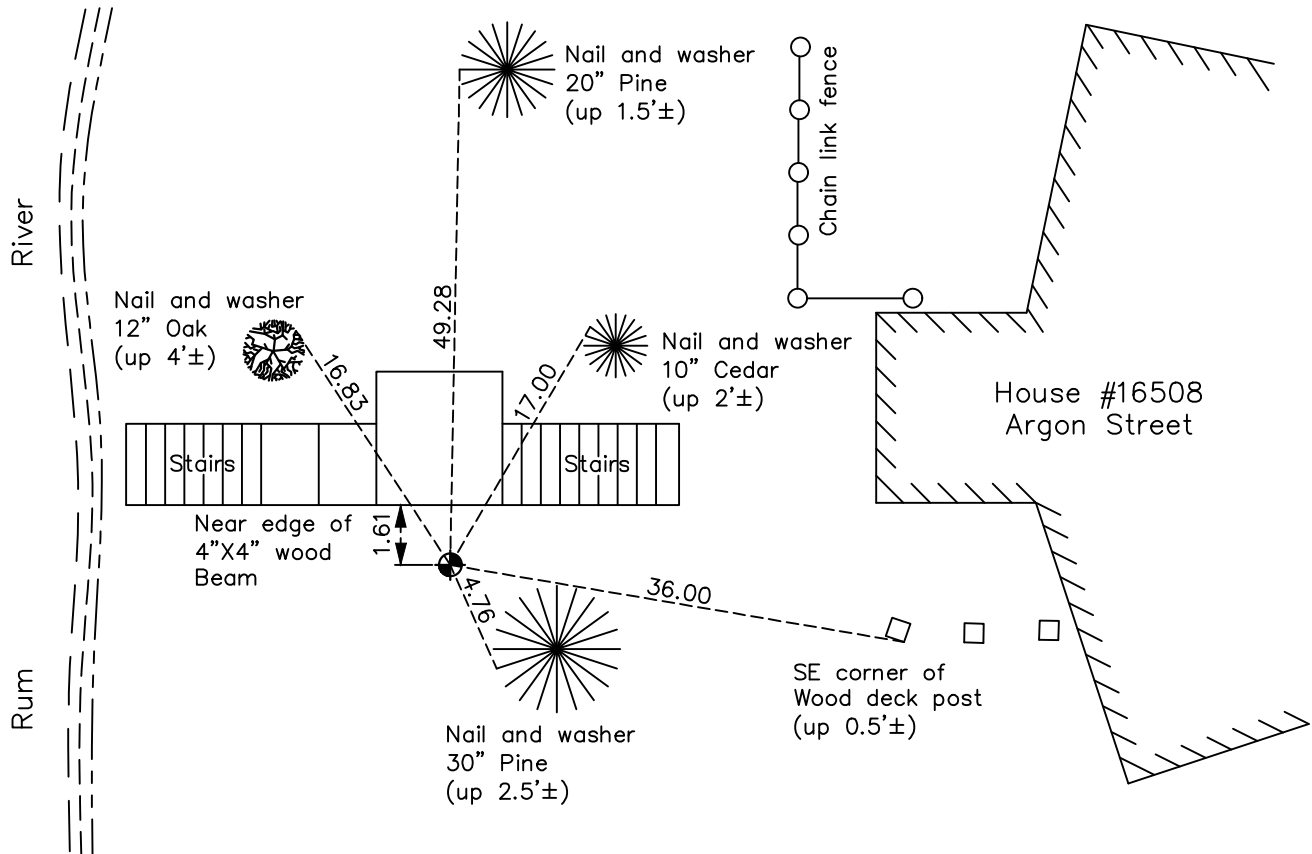
(On south line of section)

On the 9th day of May, 1967, the described corner was evidenced by area resurvey

and to perpetuate the location of said corner, at the exact location thereof, a permanent marker was placed consisting of a cast iron monument

AND on the 17th day of October, 2022, said permanent marker was found down 0.3'± and the ties were updated

Updated reference ties are as shown below.



Revision Date  
12/30/22

N.A.D. 1983 Coordinates  
(1996 Adjustment)

County Project Coordinates	
Northing	<u>185665.1263</u>
Easting	<u>465428.9365</u>
Date	<u>3/29/00</u>

I hereby certify that this United States public land survey monument record is correct and complete to the best of my knowledge and belief.

*David Zieglmeier* Date 2/22/23

David Zieglmeier Anoka County Surveyor  
Minnesota License Number 46179

# HISTORY OF GOVERNMENT CORNER

Page No. 47

County of Anoka

State of Minnesota

Witness Corner of Sec. 12 Township 32 Range 25  
(On south line of section)

## **CORNER HISTORY:**

**May 9, 1967** -Set cast iron monument on east side of Rum River using area resurvey and established ties to monument.

June 18, 1969 – Found cast iron monument and updated ties.

June 25, 1976 – Found cast iron monument and updated ties.

August 16, 1978 – Found cast iron monument and updated ties.

June 18, 1979 – Found cast iron monument and updated ties.

August 18, 1982 – Found cast iron monument and updated ties.

July 23, 1985 – Found cast iron monument and updated ties.

July 14, 1988 – Found cast iron monument and updated ties.

August 20, 1993 – Found cast iron monument and updated ties.

March 29, 2000 – Found cast iron monument and established NAD 1983 (1996 Adjustment) Anoka County Project Coordinates by Static GPS methods. Updated ties.

June 9, 2010 – Found cast iron monument down 0.3'± and updated ties.

August 12, 2015 – Found cast iron monument and updated ties.

October 14, 2020 – Found cast iron monument down 0.3'± and updated ties.

October 17, 2022 – Found cast iron monument down 0.3'±, updated ties and verified corner position by VRS GPS methods.