

CERTIFICATE OF LOCATION OF GOVERNMENT CORNER

County of Anoka

State of Minnesota

Witness Corner of Sec. 12 Township 32 Range 25

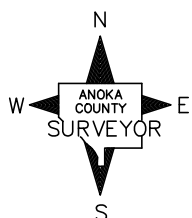
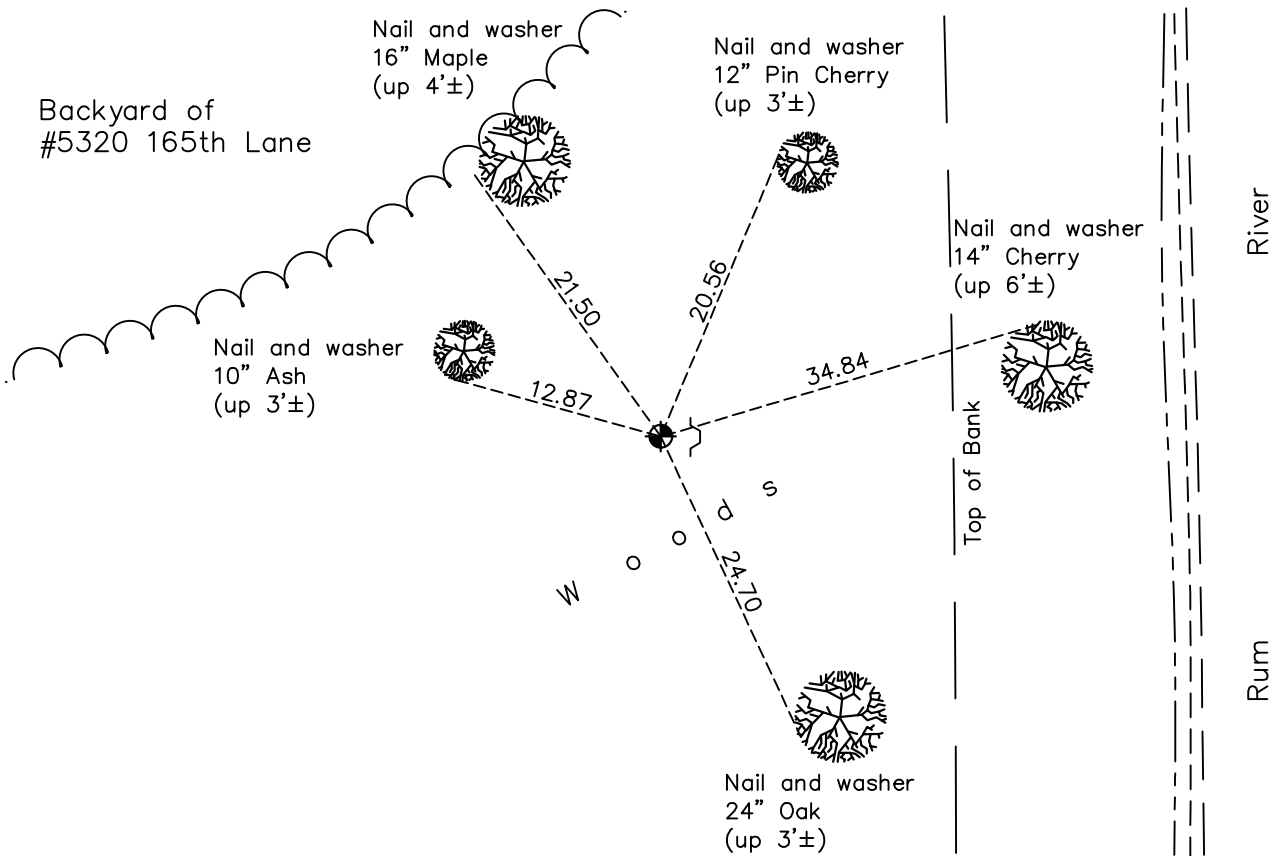
(On south line of section)

On the 8th day of May, 1967, the described corner was evidenced by area resurvey

and to perpetuate the location of said corner, at the exact location thereof, a permanent marker was placed consisting of a cast iron monument

AND on the 6th day of October, 2022, said permanent marker was found flush with post
1.2'± east of monument and sign missing. The ties were updated

Updated reference ties are as shown below.



Revision Date
12/30/22

N.A.D. 1983 Coordinates
 (1996 Adjustment)

County Project Coordinates	
Northing	<u>185666.3684</u>
Easting	<u>465105.4380</u>
Date	<u>3/27/00</u>

I hereby certify that this United States public land survey monument record is correct and complete to the best of my knowledge and belief.
David Zieglmeier Date 2/22/23
 David Zieglmeier Anoka County Surveyor
 Minnesota License Number 46179

HISTORY OF GOVERNMENT CORNER

Page No. 48

County of Anoka

State of Minnesota

Witness Corner of Sec. 12 Township 32 Range 25
(On south line of section)

CORNER HISTORY:

May 8, 1967 -Set cast iron monument flush with the surface on side hill and on west side of Rum River using area resurvey and established ties to monument.

July 1, 1969 – Found cast iron monument with steel post up 3.5'± and updated ties.

June 25, 1976 – Found cast iron monument and updated ties.

June 19, 1979 – Found cast iron monument and updated ties.

August 23, 1982 – Found cast iron monument and updated ties.

July 12, 1988 – Found cast iron monument and updated ties.

August 24, 1993 – Found cast iron monument and updated ties.

March 27, 2000 – Found cast iron monument with sign and post on east side and established NAD 1983 (1996 Adjustment) Anoka County Project Coordinates by Static GPS methods. Updated ties.

May 4, 2010 – Found cast iron monument flush with the surface with a sign and post 1.2'± east of monument and updated ties.

October 1, 2015 – Found cast iron monument flush with the surface with a post 1.2'± east of monument (sign is missing)and updated ties.

May 29, 2020 – Found cast iron monument and updated ties.

October 6, 2022 – Found cast iron monument flush, updated ties and verified corner position by VRS GPS methods.