

CERTIFICATE OF LOCATION OF GOVERNMENT CORNER

County of Anoka

State of Minnesota

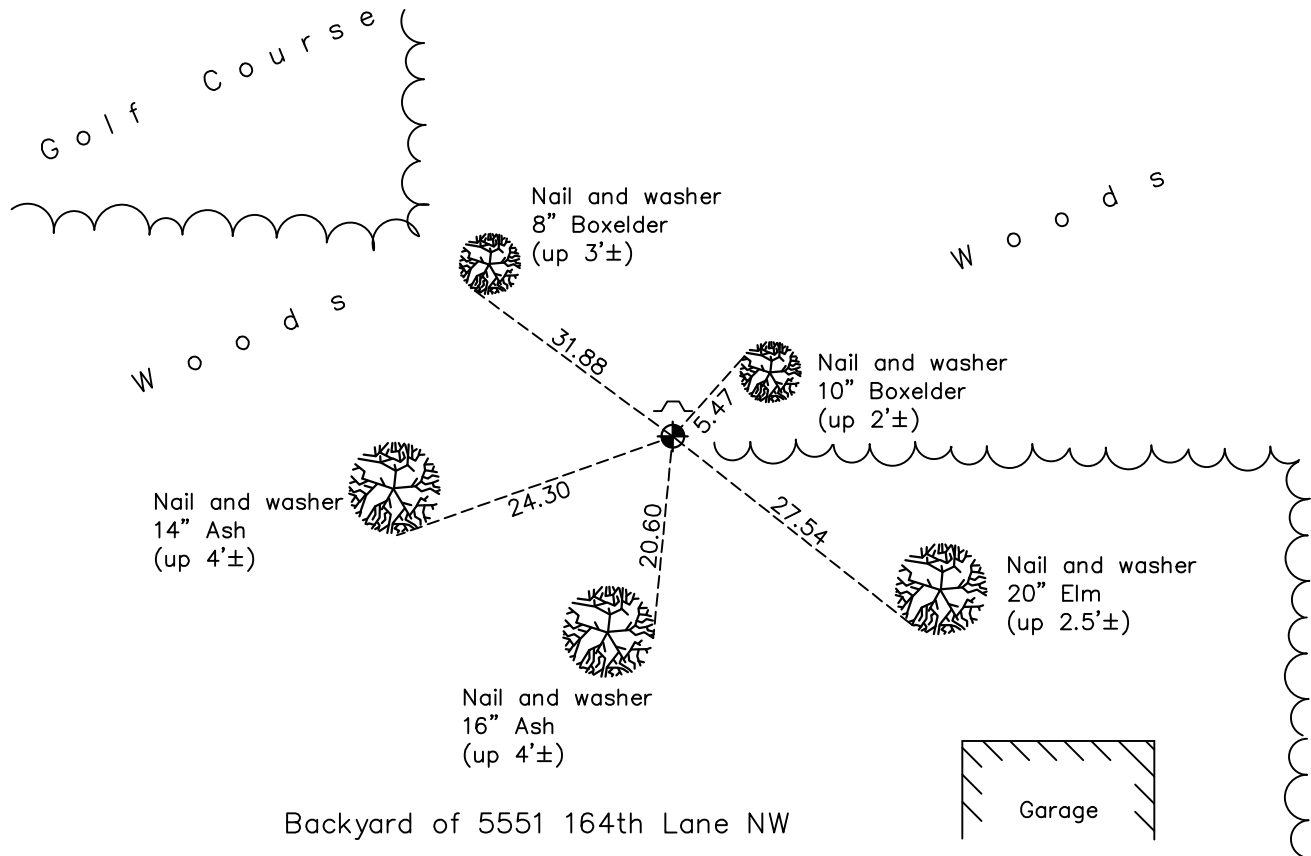
Southeast Corner of Sec. 11 Township 32 Range 25

On the 22nd day of May, 1974, the described corner was evidenced by a concrete monument

and to perpetuate the location of said corner, at the exact location thereof, a permanent marker was placed consisting of a "Judicial Landmark" monument with a sign and post on the north side

AND on the 29th day of September, 2022, said permanent marker was found down 0.2' with a sign and post on the north side and the ties were updated

Updated reference ties are as shown below.



Revision Date
12/30/22

N.A.D. 1983 Coordinates
 (1996 Adjustment)

County Project Coordinates	
Northing	<u>185673.8013</u>
Easting	<u>463376.6239</u>
Date	<u>3/27/00</u>

I hereby certify that this United States public land survey monument record is correct and complete to the best of my knowledge and belief.
David Zieglmeier Date 2/22/23
 David Zieglmeier Anoka County Surveyor
 Minnesota License Number 46179

HISTORY OF GOVERNMENT CORNER

Page No. 49

County of Anoka

State of Minnesota

Southeast Corner of Sec. 11 Township 32 Range 25

CORNER HISTORY:

May 24, 1945 -Found concrete monument down 5"±. Established ties to monument.

September 2, 1960 -Found concrete monument down 6"±. Updated ties.

August 11, 1964 -Found concrete monument and updated ties.

June 10, 1969 -Found concrete monument with an iron fence post on the north side up 3'± and updated ties.

May 22, 1974 -Replaced concrete monument with a "Judicial Landmark" cast iron monument and updated ties.

June 28, 1976 -Found "Judicial Landmark" cast iron monument and updated ties.

August 21, 1978 -Found "Judicial Landmark" cast iron monument and updated ties.

June 19, 1979 -Found "Judicial Landmark" cast iron monument and updated ties.

August 23, 1982 -Found "Judicial Landmark" cast iron monument and updated ties.

August 23, 1985 -Found "Judicial Landmark" cast iron monument and updated ties.

July 12, 1988 -Found "Judicial Landmark" cast iron monument and updated ties.

August 16, 1993 -Found "Judicial Landmark" cast iron monument and updated ties.

March 27, 2000 – Found "Judicial Landmark" cast iron monument and established NAD 1983 (1996 Adjustment) Anoka County Project Coordinates by Static GPS methods. Updated ties.

April 15, 2010 -Found "Judicial Landmark" cast iron monument down 0.2'± with a sign and post on the north side of monument and updated ties.

August 12, 2015 -Found "Judicial Landmark" cast iron monument down 0.2'± and updated ties.

May 29, 2020 -Found "Judicial Landmark" cast iron monument down 0.2'± and updated ties.

September 29, 2022 -Found "Judicial Landmark" cast iron monument down 0.2'± and updated ties.